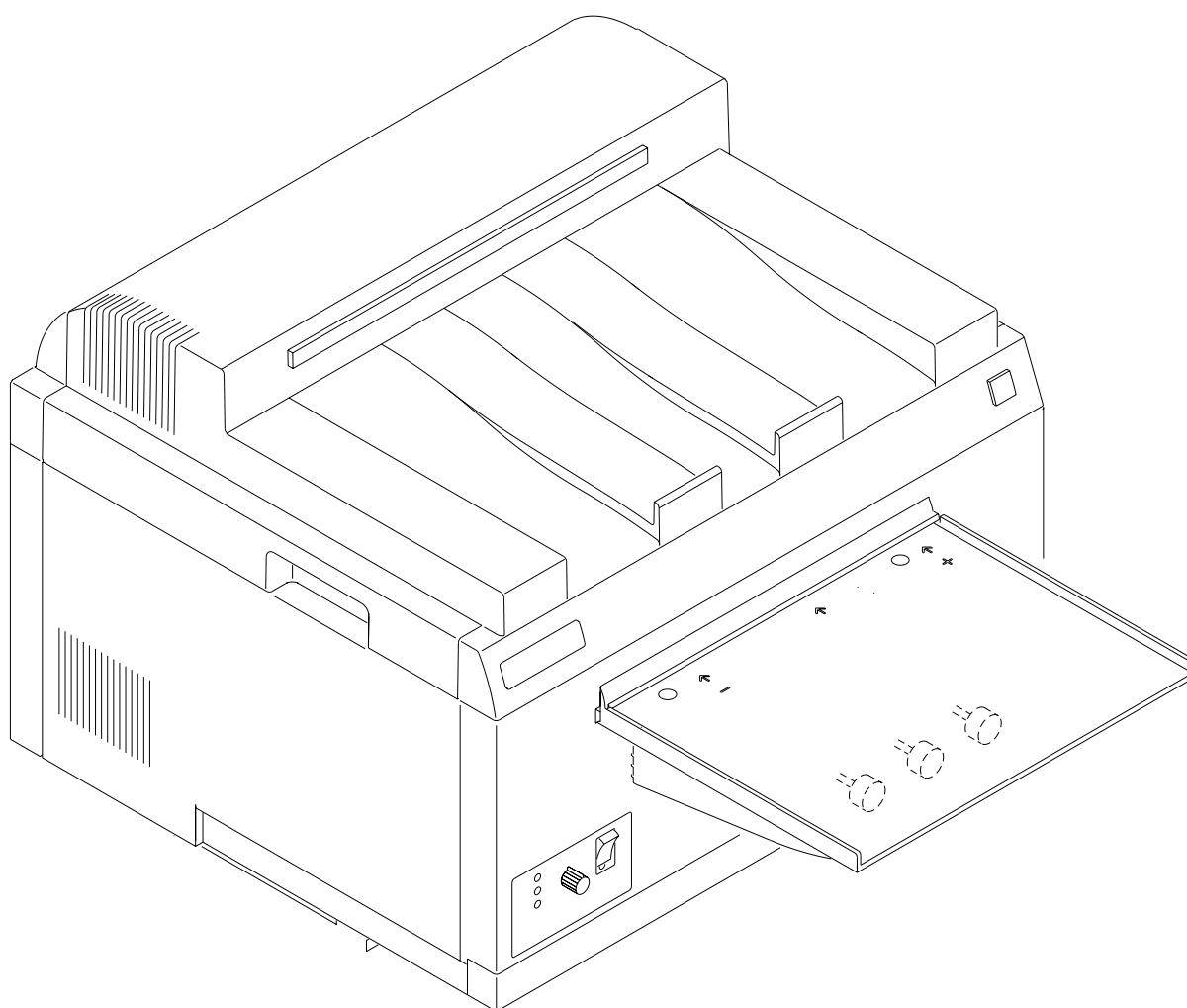


---

Publication No. 981094  
September 1995  
Supersedes  
October 1994

# **COMPONENT LOCATOR for the *Kodak X-Omat* M43 and M43A PROCESSORS and the *Kodak X-Omat* CLINIC 1 PROCESSOR**



H130\_0009DA




HEALTH SCIENCES DIVISION

**PLEASE NOTE** The information contained herein is based on the experience and knowledge relating to the subject matter gained by Eastman Kodak Company prior to publication.

No patent license is granted by this information.

Eastman Kodak Company reserves the right to change this information without notice, and makes no warranty, express or implied, with respect to this information. Kodak shall not be liable for any loss or damage, including consequential or special damages, resulting from any use of this information, even if loss or damage is caused by Kodak's negligence or other fault.

 This equipment includes parts and assemblies sensitive to damage from electrostatic discharge. Use caution to prevent damage during all service procedures.

<b>Component Lists</b> .....	3
Alarm - LS .....	3
Circuit Board - BD .....	3
Circuit Breaker - CB .....	3
Connectors - P/J .....	3
Electrostatic Discharge - E .....	4
Filter - FL .....	4
Fuses - F .....	4
Heater - HR .....	4
Integrated Circuits - U .....	4
LED/Indicators - DS .....	4
Motors - B .....	4
Power Supply - A .....	4
Resistors - R .....	5
Sensors/Switches - S .....	5
Solenoids/Inductors - L .....	5
Solid State Relays - SSR .....	5
Terminal Blocks - TB .....	5
Thermistors - RT .....	5
Transformer - T .....	5

---

# Component Lists

## Alarm - LS

	Page
LS1 Audio Alarm.....	7

## Circuit Board - BD

	Page
BD 100 Circuit Board .....	8, 9

## Circuit Breaker - CB

	Page
CB1 Main Power.....	7

## Connectors - P/J

	Page
P/J1 Drive Motor Assembly 50/60 Hz Connectors.....	7
P/J2 Developer Recirculation Pump .....	6
P/J3 Fixer Recirculation Pump .....	6
P/J4 Dryer Heater.....	6
P/J5 Dryer Blower Motor.....	6
P/J6 Wash Pump .....	6
P/J7 Developer Fixer Replenishment Pump .....	7
P/J8 Developer Heater Assembly .....	6
P/J12 Status Indicators .....	7
P/J13 Audio Alarm.....	7
P/J14 Film Sensor (-) .....	7
P/J15 Film Sensor .....	7
P/J16 Film Sensor (+) .....	7
P/J18 Developer Thermistor Assembly .....	7
P/J19 Dryer Thermistor Assembly.....	6
P/J20 Diverter Cooling Solenoid (L2) for M43 and M43A only.....	6
P/J21 Diverter Wash Solenoid (L3) for M43 and M43A only .....	6
P/J22 Water Input Solenoid .....	7
P/J24 Developer Temperature Display, M43 and M43A only .....	7
P/J25 Developer Temperature Display, M43 and M43A only .....	7
P/J26 Dryer Air Vane Switch at the Harness.....	6
J27 Dryer Air Vane Switch at the Switch .....	6
P/J28 DC Interlock Switch Connector .....	6
J101 DC Power .....	9
J102 20 Volts AC .....	9
J103 Solenoids .....	9
J104 Developer and Dryer Thermistors and Dryer Potentiometer .....	9
J105 Alarm, Indicators, Air Vane Switch, Interlock Switch, and Sensors .....	9

J106 Developer Temperature Display .....	9
J107 Solid State Relays .....	9

**Electrostatic Discharge - E**

	Page
E12 ESD Jack .....	7

**Filter - FL**

	Page
FL1 EMI Line Filter .....	7

**Fuses - F**

	Page
F1 Transformer .....	7,8
F2 DC Power Supply .....	7,8

**Heater - HR**

	Page
HR1 Developer Heater .....	6
HR2 Dryer Heater .....	6

**Integrated Circuits - U**

	Page
U5 EEPROM - Main Program .....	9
U20 Microprocessor .....	9

**LED/Indicators - DS**

	Page
DS1 Ready LED .....	7
DS2 Wait LED .....	7
DS3 Service LED .....	7

**Motors - B**

	Page
B1 Dryer Blower .....	6
B2 Wash Pump .....	6
B3 Replenishment Pump .....	6
B4 Drive Motor .....	7
B5 Developer Recirculation Pump .....	6
B6 Fixer Recirculation Pump .....	6

**Power Supply - A**

	Page
A1 Quad Power Supply .....	8

---

## Resistors - R

	Page
R3 Dryer Heater Potentiometer.....	7
R25 Developer Heater Potentiometer .....	9
R42 Developer Temperature Display Calibration Potentiometer .....	9

## Sensors/Switches - S

	Page
U7 Film Sensor - Left (-) .....	7
U8 Film Sensor - Middle .....	7
U9 Film Sensor - Right (+) .....	7
S1 Service Switch Pack.....	9
S5 Interlock Switch.....	6
S6 Cover Interlock .....	6

## Solenoids/Inductors - L

	Page
L1 Water Input Solenoid.....	7
L2 Diverter Valve - Developer Cooling Solenoid, M43 and M43A only .....	6
L3 Diverter Valve - Wash Solenoid, M43 and M43A only .....	6

## Solid State Relays - SSR

	Page
SSR - U1 Dryer Heater Relay .....	8
SSR - U3 Developer Heater Relay .....	8
SSR - U4 Wash Recirculation Pump Relay .....	8
SSR - U5 Developer/Fixer Replenishment Pump Relay .....	8
SSR - U6 Drive Motor and Blower Motor Relay .....	8

## Terminal Blocks - TB

	Page
TB1 AC Power Input .....	8
TB2 AC Power Selection/Distribution .....	8

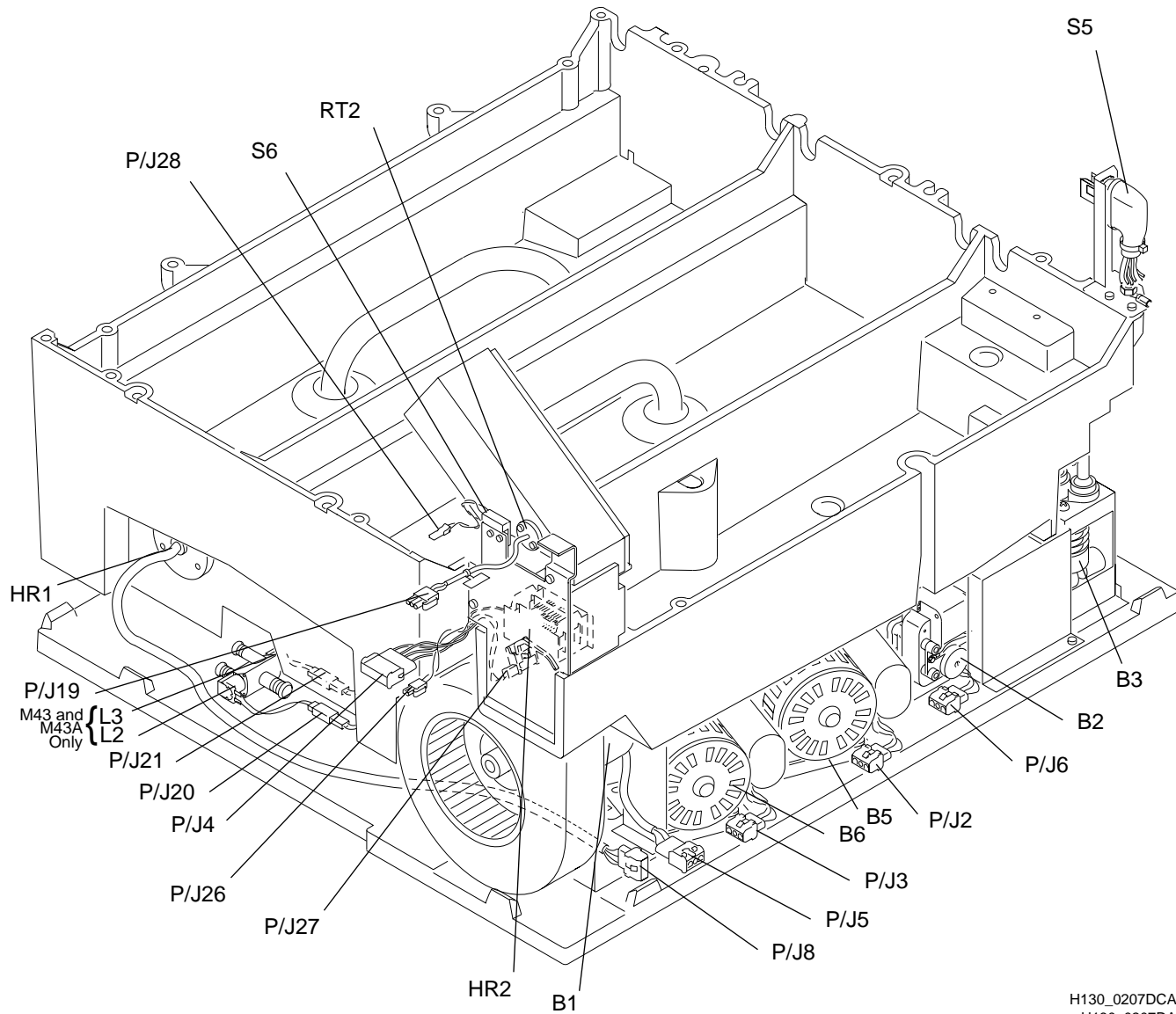
## Thermistors - RT

	Page
RT1 Developer Thermistor .....	7
RT2 Dryer Thermistor .....	6

## Transformer - T

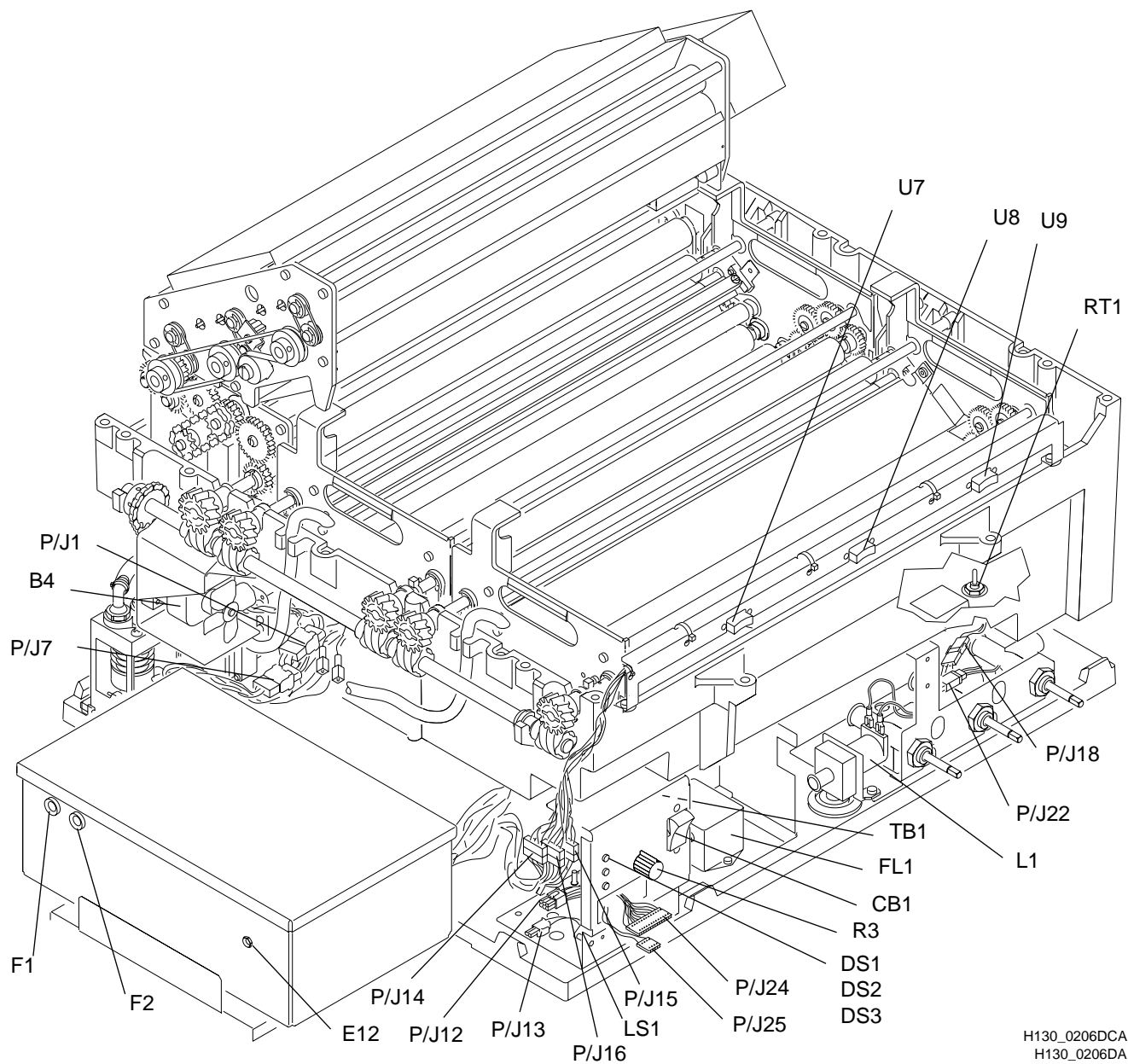
	Page
T1 Autotransformer.....	7

Dryer End View

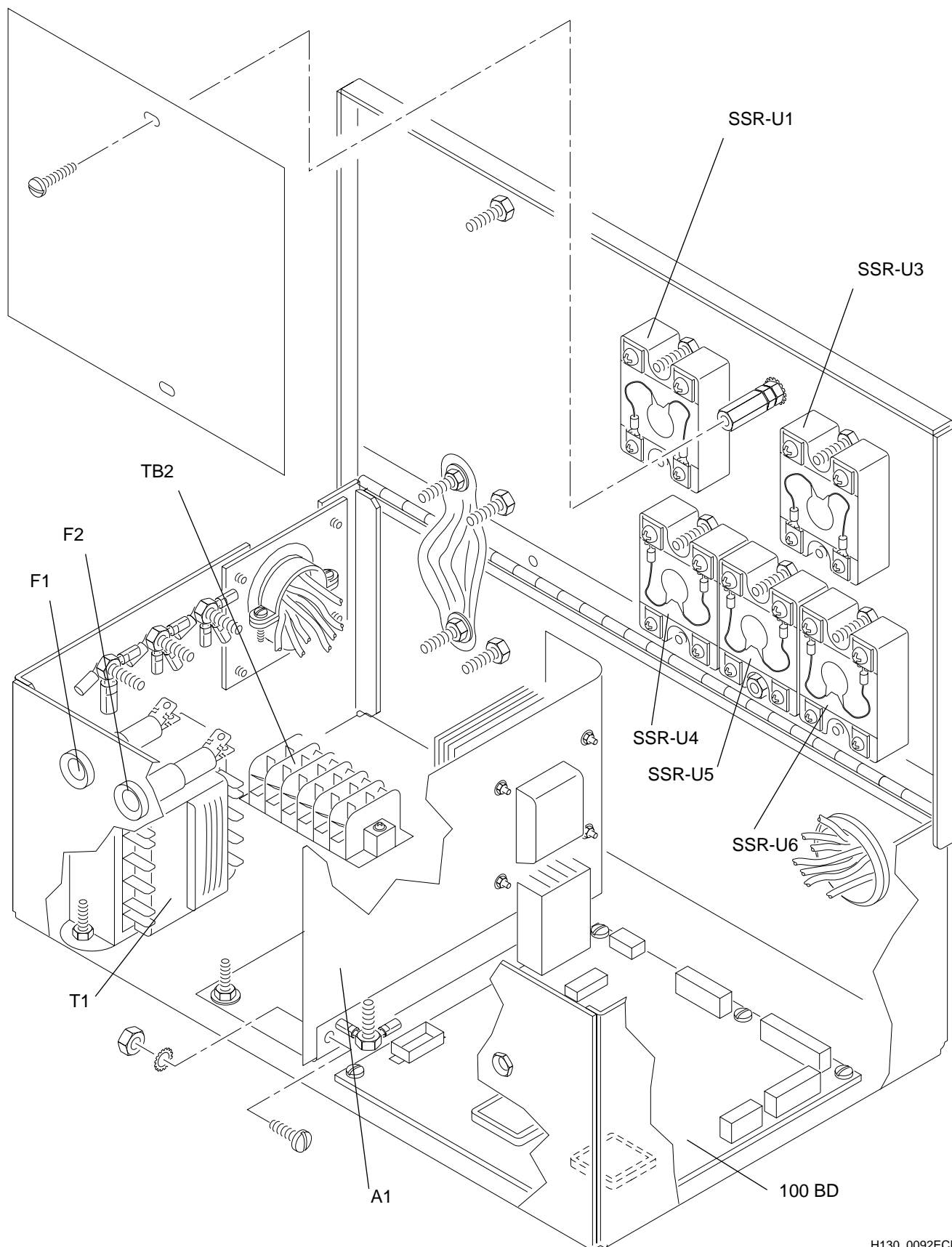


H130\_0207DCA  
H130\_0207DA

## Feed End View



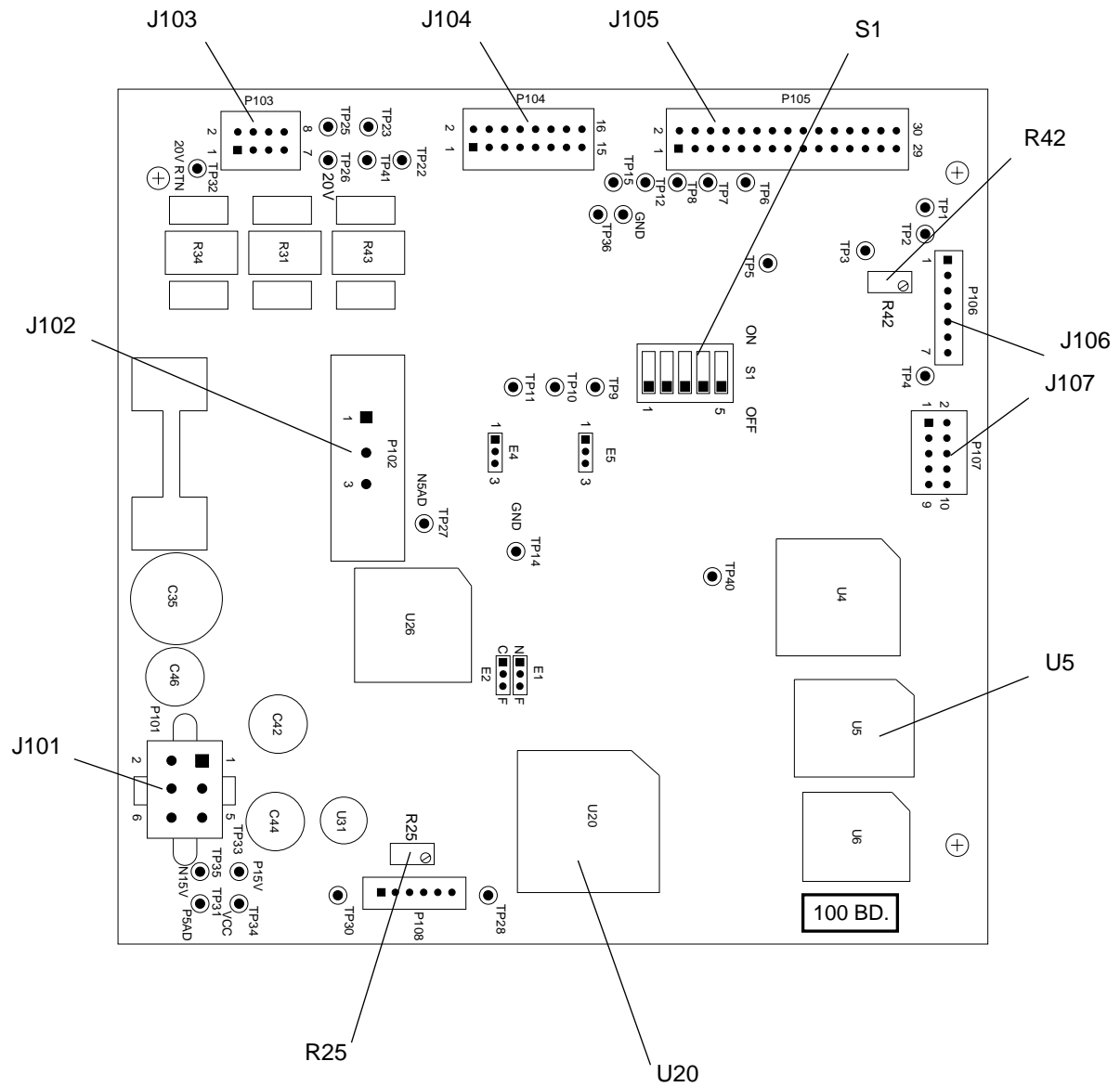
Electrical Box



H130\_0092ECE  
H130\_0092EA



## 100 Circuit Board



H130\_0146DCA  
H130\_0146DA

## Publication History

Print Date	Pub. No.	ECO No.	Affected Pages	File Name	Notes
Jan. 1994	981094	2622-064	All Pages	3229cl_a.txt	1st Printing
April 1994	981094	2622-085	Front Cover, 2, 3, 4, 6, 10 - Back Cover	3229cl_a_085.txt	Added DC Interlock Switch S6
May 1994	981094	2622-098	Front Cover, 10, Back Cover	3229cl_a_098.txt	Update the Print Date
Oct 1994	981094	2622-117	All Pages	3229cl_a_117.txt	Major Revision and Update to bring Manual to Final Release Status
SEP95	981094	2622-157	All Pages	cl3229_1_01sep95.doc	Revision due to product changes; reprinted entire manual due to new publication software used for documentation

*Kodak and X-Omat are trademarks.*

