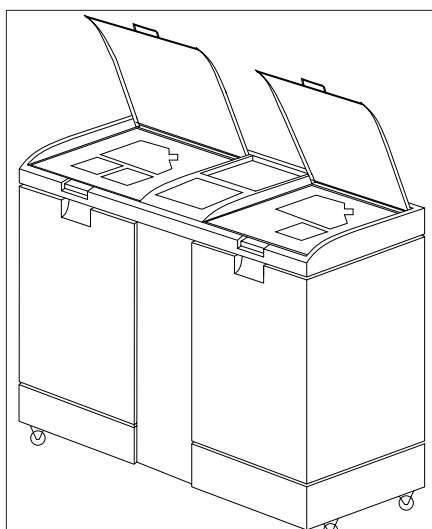


Operator Guide

Publication No. OI 3439-1/97-Eng



KODAK

Automixer II Plus



PLEASE NOTE

The information contained herein is based on the experience and knowledge relating to the subject matter gained by Kodak prior to publication. No patent license is granted by this information. Kodak reserves the right to change this information without notice, and makes no warranty, expressed or implied, with respect to this information.

© Kodak AG, Stuttgart 1996

Table of Contents

1. GENERAL INFORMATION	1
Description	1
Installation	1
Warnings	2
Approvals, safety standards and water requirements	2
Views and description of control units	3
Front view	3
Tanks	3
Rear view: Inlets/outlets/switches	4
Main switch	5
Selector switch 20 l/40 l (5 gal/10 gal)	5
Remote alarm unit (remote indicator)	5
Control panel	6
Power-on indicator	7
Developer/fixer low level warning lights	7
Overflow warning light	7
Bottle rinse indicators	7
Manual control panel	8
Water supply buttons	9
Pump buttons	9
Manual valves and drain/refilling outlets	10
2. OPERATION	11
Switching on	11
Switching off	12
Preparation of chemicals	13
Solution at low level	14
Start-up/priming	17
Filling the processor tanks	19
Draining	22
Cleaning	25
Moving the Automixer II Plus	27
3. MAINTENANCE	28
Weekly	28
Once a year	28
Chemistry	28
Oxidation	28
4. TROUBLESHOOTING	29
5. SPECIFICATION	30

1. GENERAL INFORMATION

Description

The KODAK Automixer II Plus is designed to automatically prepare the processing chemicals for X-ray films from Kodak chemical concentrates supplied in sealed bottles.

The KODAK Automixer II Plus is composed of the following main parts:

- developer unit on the left
- fixer unit on the right
- manual control area in between,
containing all electrical parts, mechanical parts, and the tubing.

The developer unit and fixer unit both have three main sections. From top to bottom:

- concentrate input section (with bottle rinsing feature)
- mixing tank
- holding tank from which the solution is drawn off to the processor.

Removable parts and controls are colour-coded to avoid confusion between developer and fixer. The same colour code is used on the KODAK developer/replenisher, and KODAK fixer/replenisher bottles themselves:

Developer:	RED
Fixer:	BLUE

At the manufacturing plant all KODAK Automixers II Plus will be adjusted for developer and fixer preparation of 40 liters each. The unit is provided with a switch at the rear by means of which a developer and fixer preparation of 20 litres each can be chosen.

Installation

The KODAK Automixer II Plus is installed and levelled by a Kodak Service Provider and adjusted to one of the following mixing quantities:

20 l/40 l (Europe)	RP Chemistry
5 gal/10 gal (US)	RP or RA Chemistry

On installation, **the KODAK Automixer II Plus will be provided with the correct fuse rating by the Kodak Service Provider, who will also adjust the correct line voltage** (the adjusted voltage can be seen through the window of the FUSECAP).

WARNINGS:

The installation of the KODAK Automixer II Plus must be performed by a qualified Kodak Service Provider.

The operation of the KODAK Automixer II Plus must be performed by qualified and instructed personnel only.

Dangerous voltages are present in the KODAK Automixer II Plus.

The operator may only open Developer Top Cover, Fixer Top Cover, Front Panel and Back Panel (see figures 1 and 2 on pages 3 and 4).

The unit may only be opened by a qualified Kodak Service Provider.

Do not change the selected voltage at the VOLTAGE SELECTOR (figure 2 on page 4) yourself. It must always show the correct line voltage. A wrong voltage selection could cause damage to the KODAK Automixer II Plus.

Before the chemicals are prepared, the operator should read the warning instructions on the bottles of concentrate carefully.

Chemicals can be irritating to your skin. Personnel sensitive to chemicals should avoid contact with skin. In case of skin contact, wash relevant area with clean soap and rinse with plenty of water. Avoid contact with eyes. In case of contact with eyes, rinse immediately with plenty of water and seek medical advice.

Wear suitable protective clothing, gloves and eye/face protection when preparing the chemical solutions, and during cleaning and maintenance procedures.

Approvals and Safety Standards

The KODAK Automixer II Plus conforms with international safety requirements and bears the following safety marks:

- | | | |
|---------------------------------------|---|-------------------|
| - UL (Underwriter Laboratories) | - | UL 122 |
| - CUL (Canadian Standard Association) | - | CSA 22.2. No. 950 |
| - GS (TÜV Rheinland) | - | EN 60950/IEC 950 |

The KODAK Automixer II Plus complies with the EMC directive 89/336/EEC and bears the CE mark.

Water Requirements

DVGW Sign No. U 524
DIN 1988

UK Water Byelaw

Views and description of control units

Front view

- A. Control Panel
- B. Top Cover - Developer
- C. Top Cover - Fixer
- D. Handling Recess
- E. Front Panel
- F. Casters

Tanks

- G. Fixer Mixing Tank
- H. Developer Mixing Tank
- I. Fixer Holding Tank
- J. Developer Holding Tank

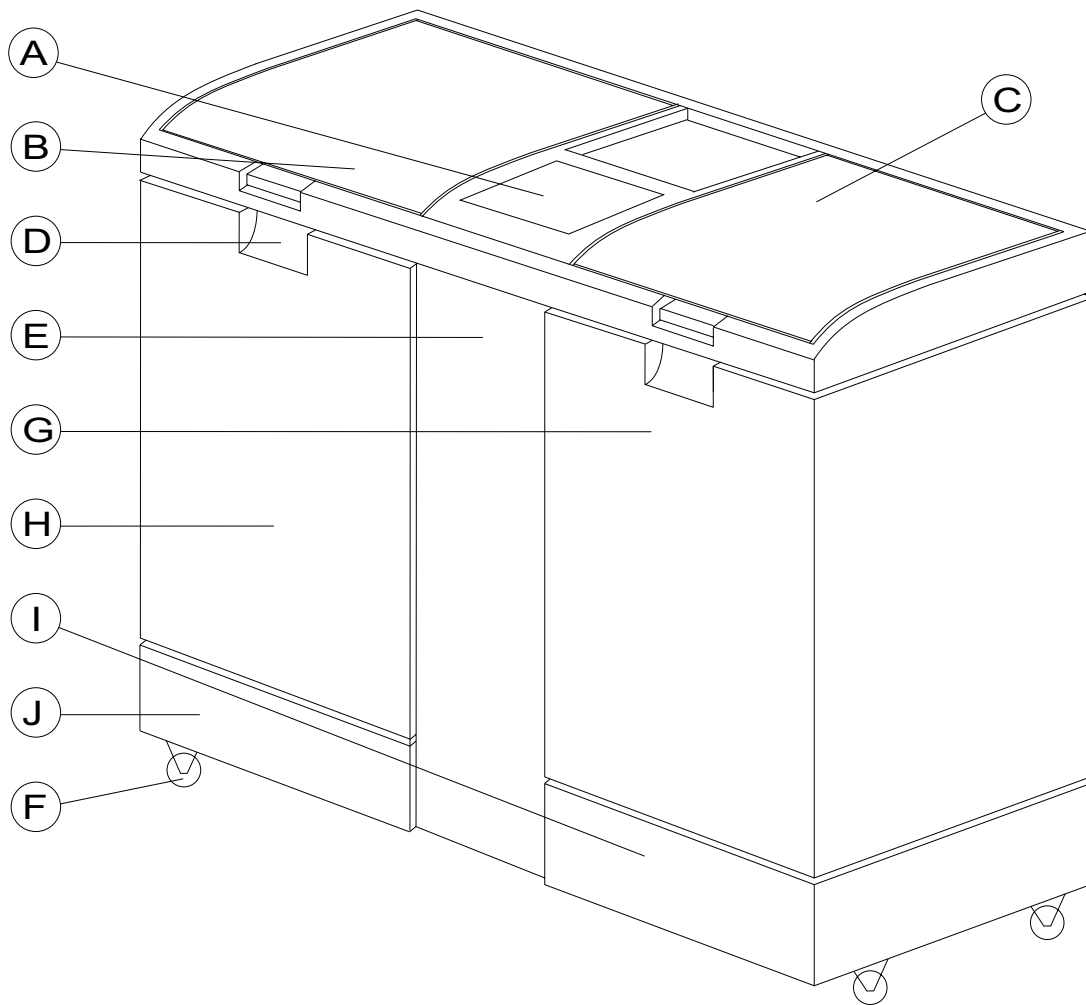


figure 1: Front view

Rear view: Inlets/outlets/switches

- A. Fuse with Voltage Selector (a)
- Main Switch (b)
- Receptacle for Power Cord (c)
- Selector Switch 20 l/40 l or 5 gal/10 gal (d)
- Remote Control Socket (e)
- B. Fixer Replenishment Outlet
- C. Overflow Outlets
- D. Water Inlet (hose not provided)
- E. Developer Replenishment Outlet
- F. Back Panel

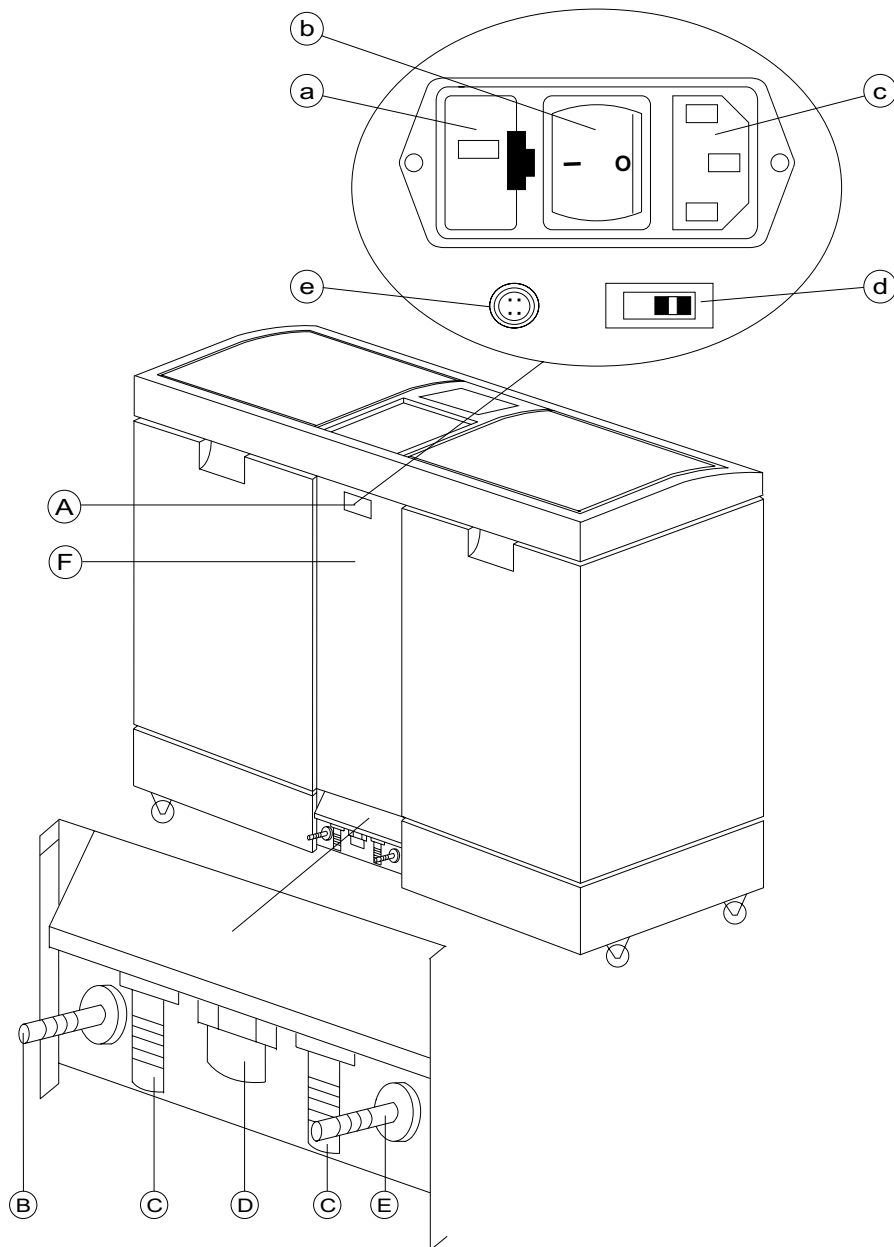


figure 2: Inlets/outlets

- **Main switch** (see item b of figure 2 on page 4)

The KODAK Automixer II Plus can be switched off at any time by the main switch which is situated at the back of the unit. When switched on again, due to its permanent memory the logic of the KODAK Automixer II Plus will be in the same status as it was before you switched off. When switching off the main switch, holding and mixing tanks are separated so that only the solutions of the holding tanks are available for the processing machine. There is no indication in cases when the whole solution of a holding tank has been used - for that reason the KODAK Automixer II Plus has to remain switched on whenever the processing machine is on.

- **Selector switch 20 l/40 l or 5 gal/10 gal** (see item d of figure 2 on page 4)

This switch offers the possibility of choosing either the maximum quantity of chemical solutions to be prepared or half of that quantity. Choosing only half of the maximum quantity might, for example, be useful when for a certain period of time you have to develop less films than usual. The required switch position should be chosen before starting the refilling process.

- **Remote alarm unit (remote indicator)**

This optional unit is equipped with a 10 m cable to be plugged into the "remote control socket" situated behind the rear panel.

A remote control might be helpful in cases when the KODAK Automixer II Plus has been installed in places where the information on the control panel is not visible all the time. In order to plug in the remote control, you have to remove the back panel which should be reinserted afterwards.

This remote alarm unit repeats the alarms (lights and buzzer), except that there is only one light for both developer and fixer level warning. An overflow condition will be indicated by a light (LED) and a continuous sound.

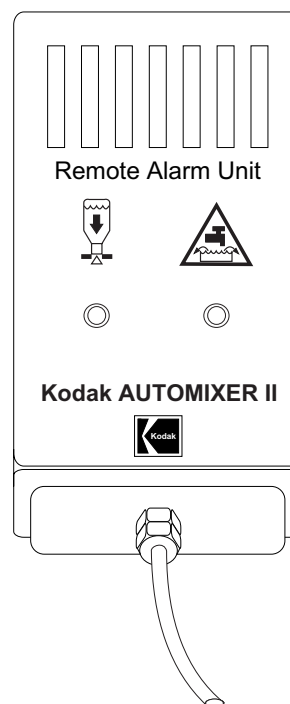


figure 3: Remote alarm unit

Control panel

- A. Developer Low Level Warning Light
- B. Overflow Warning Light
- C. Power-On Indicator
- D. Fixer Low Level Warning Light
- E. Bottle Rinse Indicator - Developer
- F. Bottle Rinse Indicator - Fixer

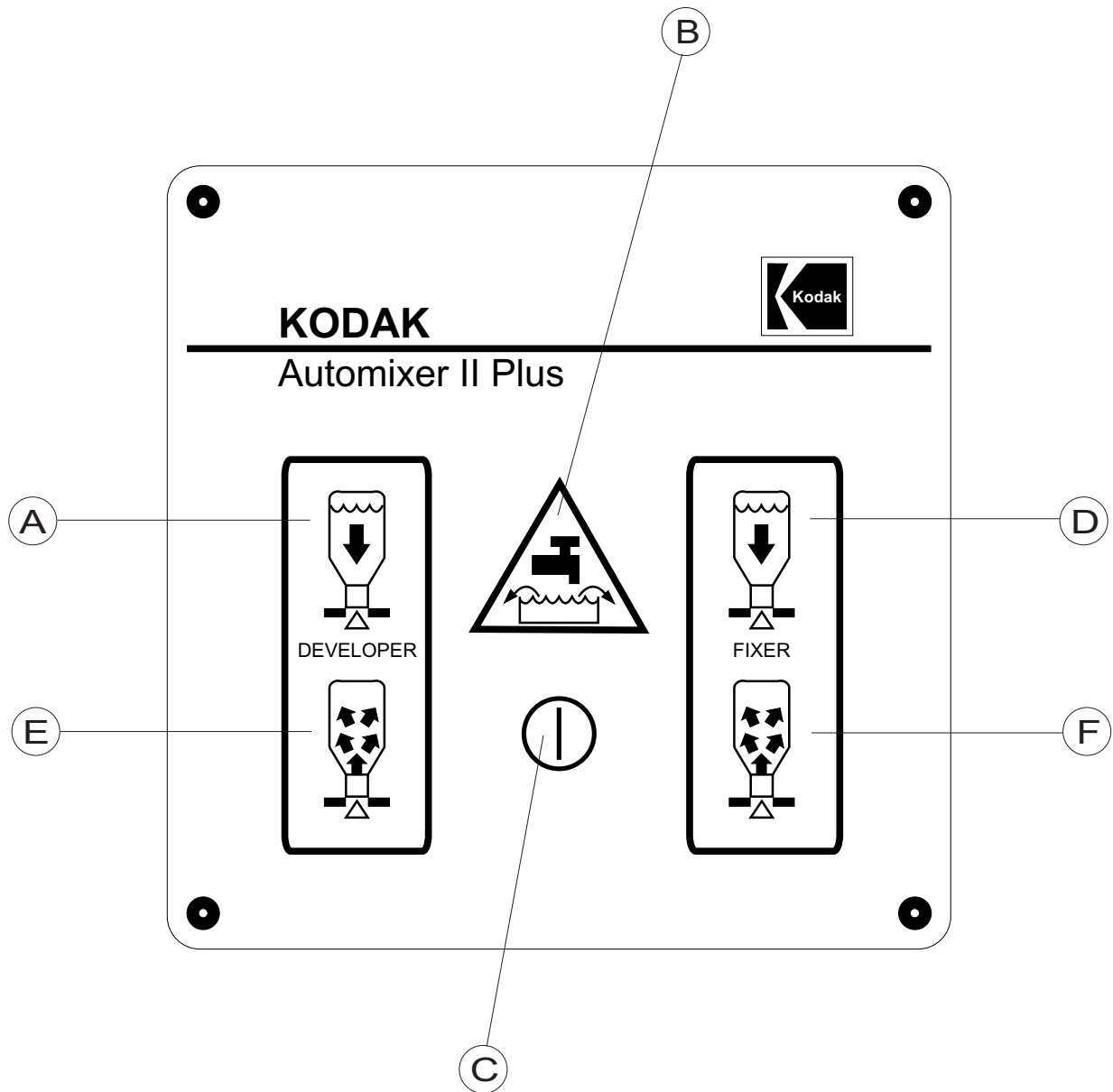


figure 4: Control Panel

The control panel is situated in the middle of the top of the KODAK Automixer II Plus.

- **Power-on indicator** (see item C of figure 4 on page 6)

This red LED is illuminated when the power is on.

- **Developer low level warning light** (see item A of figure 4 on page 6),
fixer low level warning light (see item D of figure 4 on page 6)

When one of these indicator lights is on and the buzzer sounds intermittently, the operator must recharge the corresponding mixing tank with concentrate.

- **Overflow warning light** (see item B of figure 4 on page 6)

This indicator will be lit continuously whenever either tank overflows, and the buzzer will sound continuously (see chapter "Troubleshooting").

It will be lit intermittently whenever the water tap is closed and water is required from the system. In this case, the buzzer will also sound intermittently.

- **Bottle rinse indicator - Developer** (see item E of figure 4 on page 6),
Bottle rinse indicator - Fixer (see item F of figure 4 on page 6)

While one of these indicators is blinking, you should not remove the respective bottles from the rinsing unit. The light will go off some time after the bottles have been rinsed. The time is necessary for the bottles to stop dripping.

Manual control panel

The manual control panel is necessary for

- start-up/priming of chemicals
- filling the processor with chemicals
- draining the KODAK Automixer II Plus
- cleaning the KODAK Automixer II Plus.

The manual control panel is situated behind the front panel. To remove the front panel, just pull out its lower end and disengage it (see figure 5). Remember: As soon as the front panel is removed, the KODAK Automixer II Plus goes into the manual mode. The switches on the manual control panel are "ON/OFF" (O/I) switches. If a switch is on, "I" is illuminated (see figure 7).

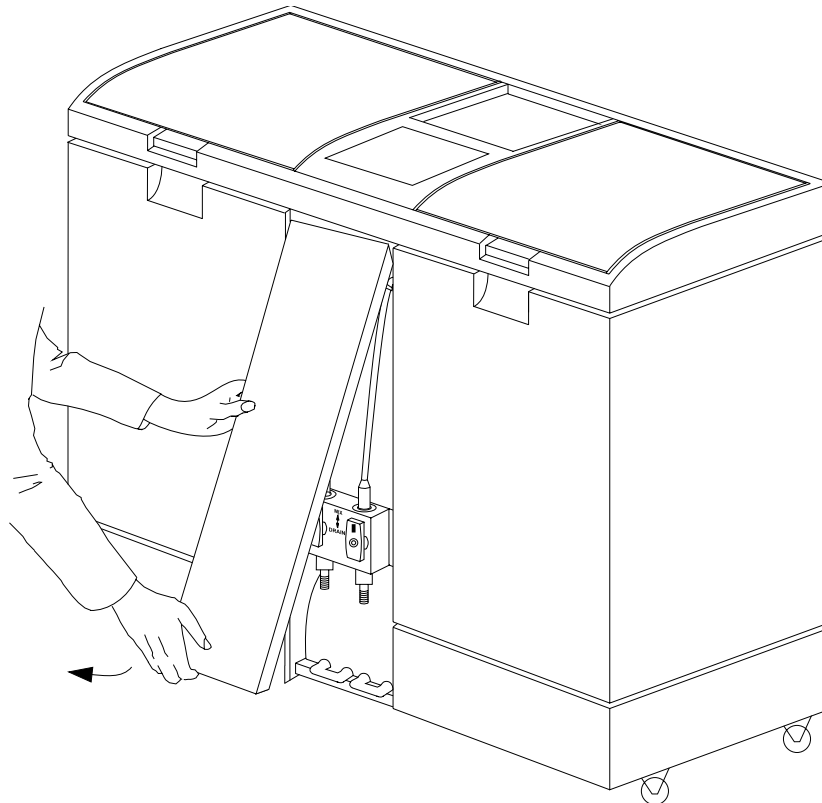


figure 5: Removing the front panel

CAUTION:

Never remove the front panel when either unit is in the mixing mode, i.e. less than 10 minutes after the new chemicals have been added. If you do so, a quick acoustic warning signal will start.

The operation will continue when you replace the panel.

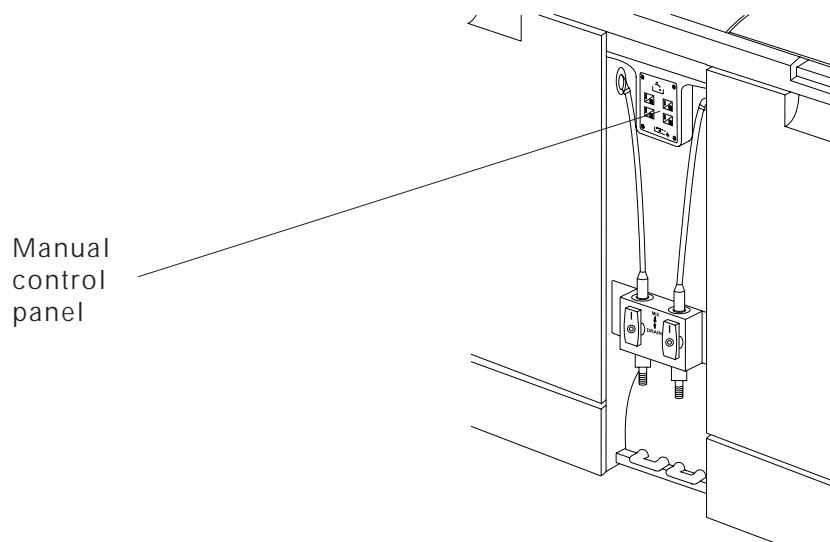


fig. 6: KODAK Automixer II Plus with front panel removed

- Water supply buttons

With the upper push buttons (A and B) on the manual control panel, the water supply for either developer mixing tank (A) or fixer mixing tank (B) or both, can be activated. Pressing a push button once activates the water supply, pressing it again deactivates it. (See figure 7.)

CAUTION:

Do not press the water supply buttons, unless you want to clean the KODAK Automixer II Plus. Otherwise, your chemical solutions would be diluted.

- Pump buttons

Pressing either (or both) of the pump buttons (C and D) will start the pump for either mixing or draining operations, according to the position of the manual valves. Press again to stop the operation. (See figure 7.)

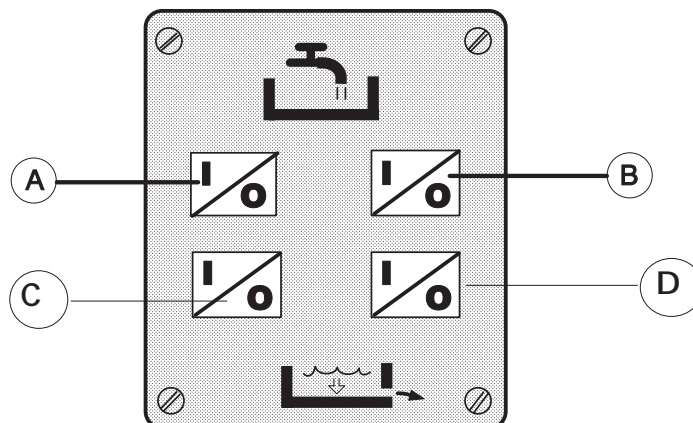


figure 7: Manual control panel

Manual valves and drain/refilling outlets

- A. Manual valve for developer
- B. Manual valve for fixer
- C. Drain/refilling outlet for developer
- D. Drain/refilling outlet for fixer

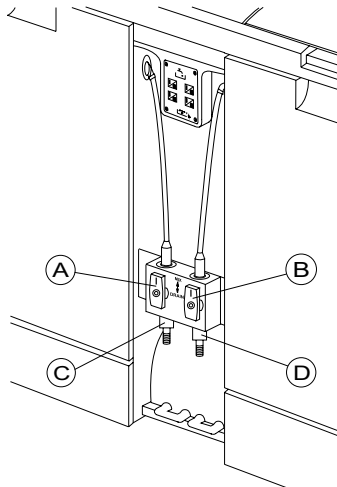


figure 8: Manual valves and drain/refilling outlets

- Manual valves

Always check that the corresponding manual valve is in the proper position when starting and stopping the pump. The safe position of the valves is the “mixing” position, i.e. valve pointing upwards. The flow is then directed from the pump back to the mixing tank for mixing purposes.

CAUTION:

Chemical spills can result from incorrect positioning of the manual valves.

- Drain/refilling outlet

When the fixer or developer manual valve (or both) is in the “drain” position and the fixer or developer pump (or both) is switched on (pump buttons on the manual control panel), the solution is sent out through either the developer outlet (C) or the fixer outlet (D). Each outlet should have a 12 mm internal diameter tube connected, so that the solution can be sent either to a container or to a processor tank.

NOTE:

In order to avoid an unintentional pumping out of the chemicals, the front panel can only be reinserted when the manual valves are in the “mixing” position, i.e. pointing to the top.

2. OPERATION

Switching on

1. Please check whether the hoses for the water supply (D), overflow outlets (C), developer (E) and fixer replenishment outlet (B) have been connected.

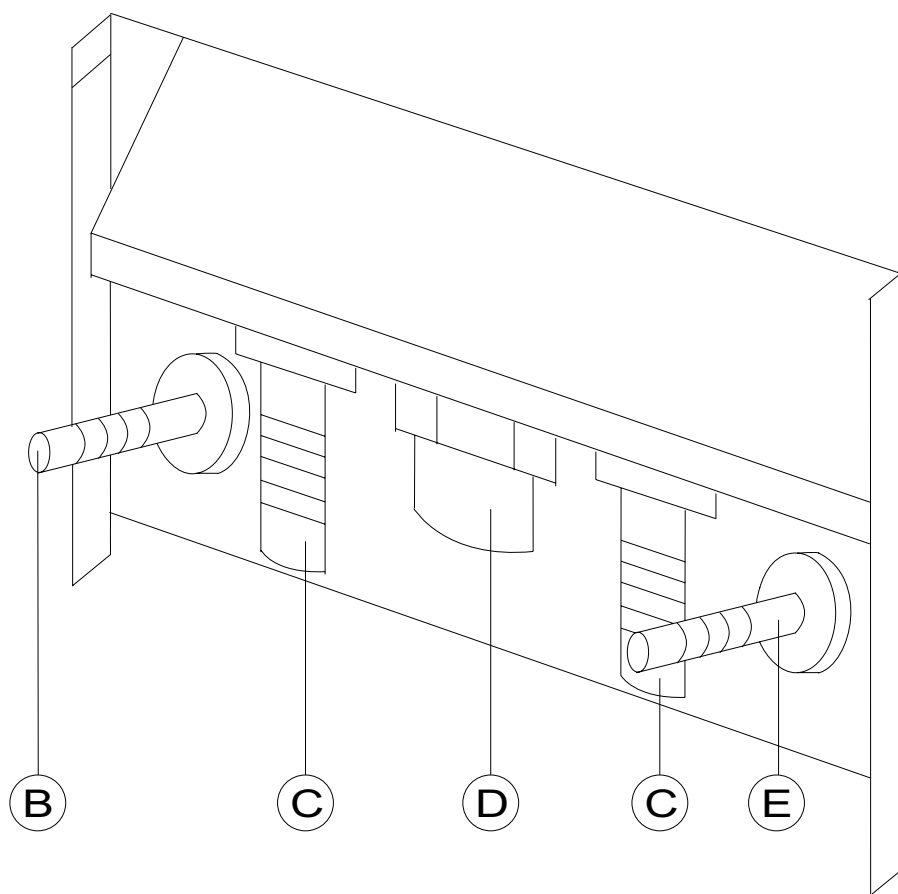


figure 9: Inlets/outlets

2. Open water supply.

3. Switch on the power switch at the rear of the KODAK Automixer II Plus.
The power-on indicator (see figure 4 on page 6) shows that the power is on and the unit ready for use.

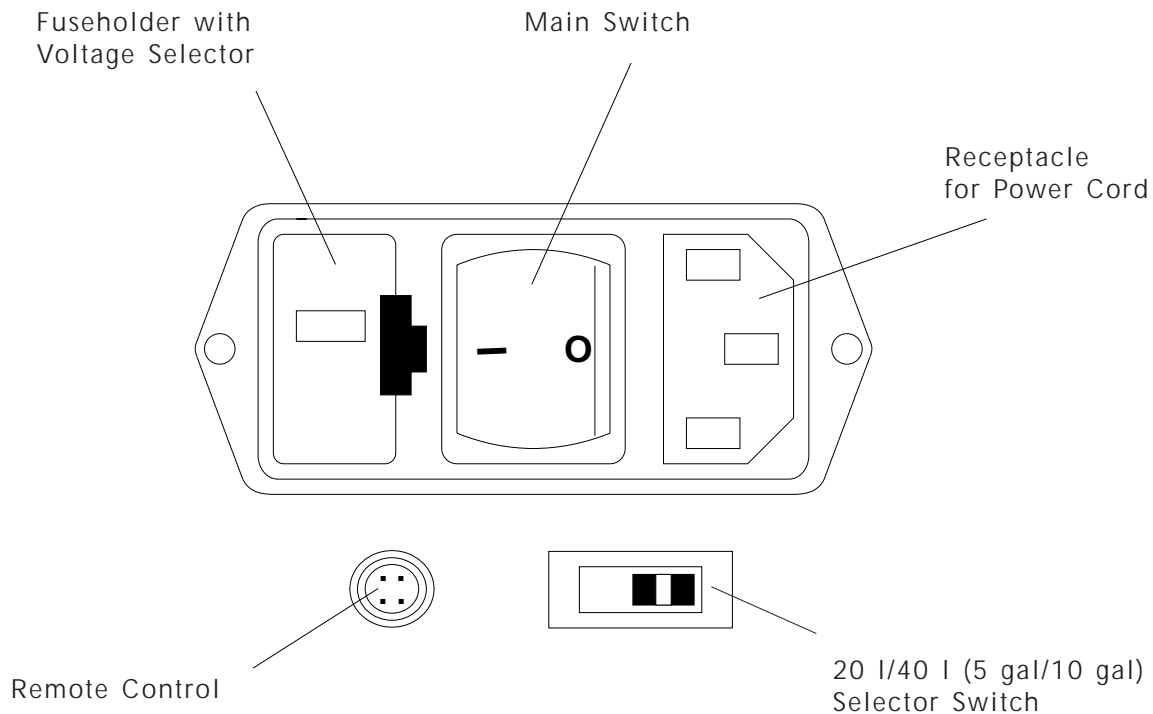


figure 10: Switches and fuse at the rear

Switching off

1. Shut off the water supply.
2. Switch off the power switch at the rear of the KODAK Automixer II Plus.
The red LED of the power-on indicator goes off.

Whenever the processing machine is switched off for longer periods, we would recommend that you switch off the KODAK Automixer II Plus as well and shut off the water supply, thus taking some pressure off the hoses. This is advisable for safety reasons. Do not forget to switch the KODAK Automixer II Plus on again and open the water supply, when the processing machine is put into operation again.

If you forget to switch the KODAK Automixer II Plus on again, the processing machine can only refer to the chemicals of the holding tanks, and there is no warning signal for the case that these chemicals are finished.

WARNING:

Wear suitable protective clothing, gloves and eye/face protection when preparing the chemical solutions, and during cleaning and maintenance procedures.

There are two ways of preparing the necessary chemical solutions:

- Chemical preparation with solution at low level

This is necessary whenever the intermitted acoustic signal and the low level warning light of the fixer and/or developer indicate that the solutions in the mixing tanks are at low level and concentrates have to be added. At that point the respective holding tank has left approx. 6.5 litres of chemical solution available for the processing machine.

- Start-up/Priming

This is necessary for the initial start-up:

- after installation
- after draining (for maintenance, cleaning, or mishandling).

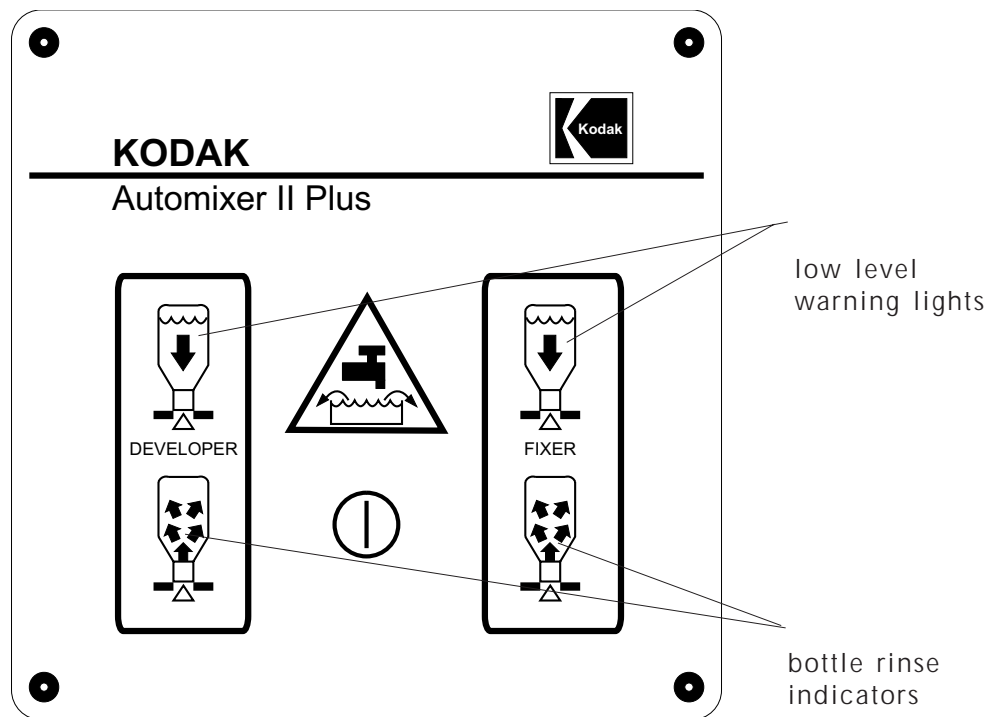


figure 11: Control panel

NOTE:

The preparation of chemicals may only be started when the low level warning lights for the fixer or developer are on and the buzzer sounds. Otherwise, you might get a wrong concentration of chemicals.

The chemical solutions are prepared as follows:

1. Make sure that the KODAK Automixer II Plus is switched on (power switch, power-on indicator) and that the water supply is open.
2. Open the top cover (left side for developer, right side for fixer).

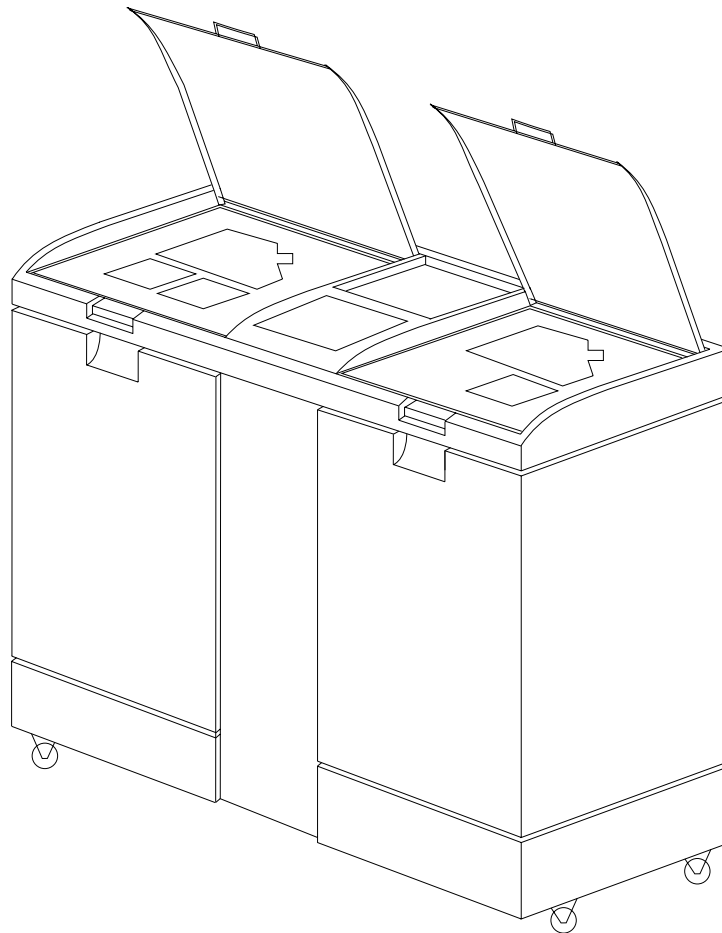


figure 12: Top covers

3. Remove screw caps of the chemical bottles and place the bottles top down into the corresponding cut-outs of the templates as follows:

- Developer RED

first insert the bottle containing part A - the bottle remains inserted, then insert the bottle containing part B (and then the bottle containing part C when using RP chemicals) - **all bottles have to stay inserted until they have been rinsed automatically** (see page 16).

- Fixer BLUE

first insert the bottle containing part A- the bottle remains inserted (then insert the bottle containing part B when using RP chemicals) - **all bottles have to stay inserted until they have been rinsed automatically** (see page 16).

CAUTION:

Do not remove the bottle seal from the bottles of concentrate. The piercing rods in the templates will automatically open the bottles.

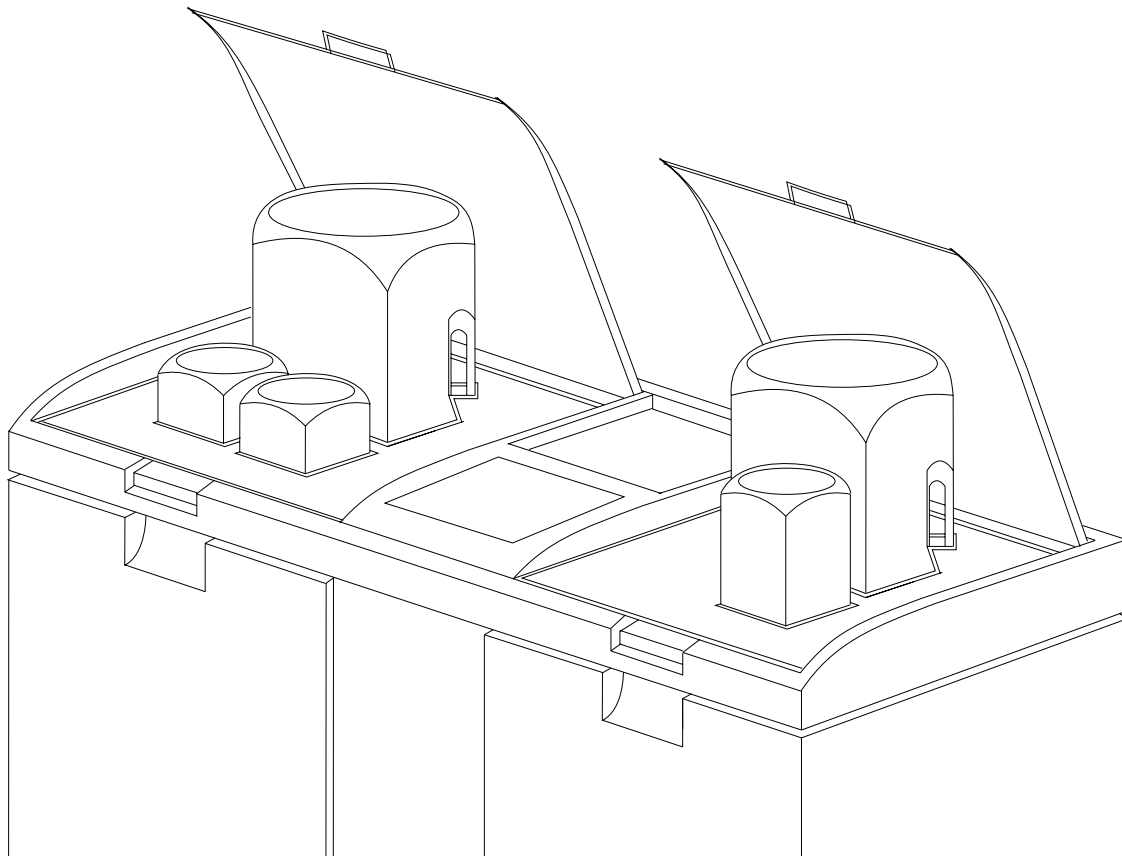


figure 13: Inserted bottles for chemical preparation

Approx. 15 seconds after the chemicals start to run into the respective tank, the low level warning light and the buzzer will go off, and the bottle rinse indicator light starts blinking to remind you not to remove the bottles too early. The bottles will be rinsed automatically, when they are empty.

NOTE:

Should the water supply be shut off, an intermittent acoustic warning signal will be given, while rinse LED and overflow LED are blinking.
In that case, please open the water supply.

4. Wait for the bottle rinse indicator light (see figure No. 4 on page 6) to go off, and then remove the bottles.

CAUTION:

Do not remove the bottles as long as the bottle rinse indicator light is still on.

5. If your KODAK Automixer II Plus is adjusted to a chemical preparation quantity of 40 l (10 gal) you now have to repeat step 3 for a second process. This is again indicated by the low level warning light and the intermitted acoustic signal.
6. Wait for the bottle rinse indicator light (see figure No. 4 on page 6) to go off, and then remove the bottles.
Do not remove them as long as the bottle rinse indicator light is still on.
7. Shut top cover again.

After one or two sets of chemicals (depending on the KODAK Automixer II Plus being set to 40 l/10 gal or to 20 l/5 gal) have been filled in, the required quantity of water will be added automatically.

Finally, the whole solution is mixed for ten minutes to ensure even mixing.

CAUTION:

Do not remove the front panel while new chemicals are added and within the period of 10 minutes which is required for the mixing process.

Start-up/priming

Start-up/priming is necessary whenever the mixing tank has been emptied completely. This is the case:

- for the first preparation of developer and fixer solutions after installation of the KODAK Automixer II Plus,
- after the KODAK Automixer II Plus has been emptied (e.g. to be cleaned).

For start-up/priming of chemicals the following steps have to be carried out exactly in the order described:

1. Remove the front panel. The manual valves for the developer and fixer must be in the mixing position, i.e. pointing upwards.

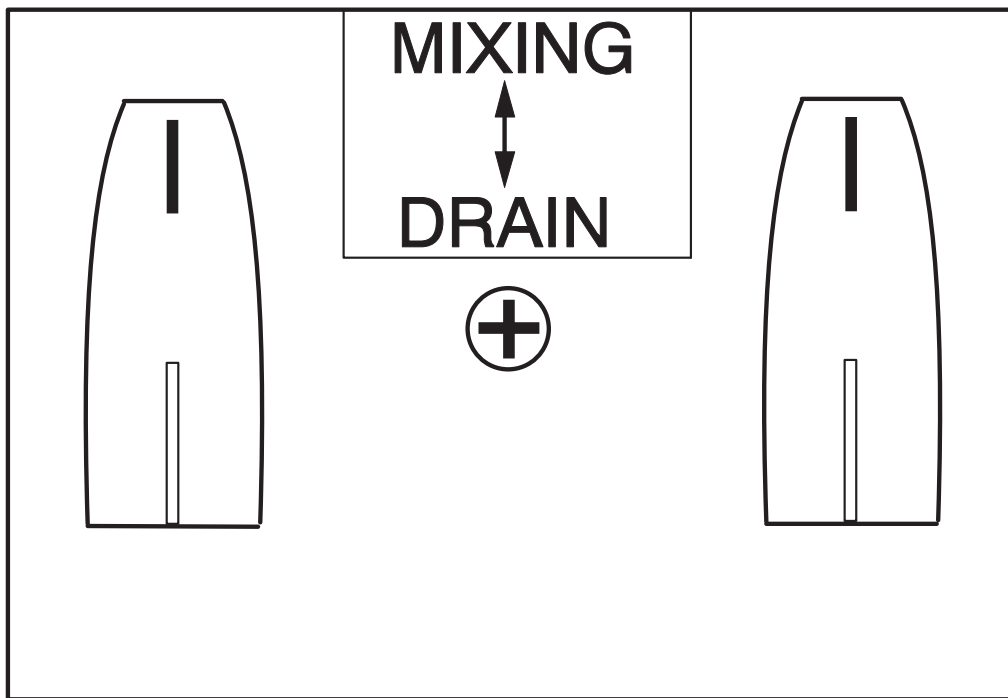


figure 14: Valves in mixing position

2. Switch off the KODAK Automixer II Plus (main power switch at the rear of the unit).

3. Keep the relevant water supply button/s (A and/or B) on the manual control panel pressed while switching the main power switch on again. The respective water supply button or buttons will now be blinking to indicate this mode of operation.

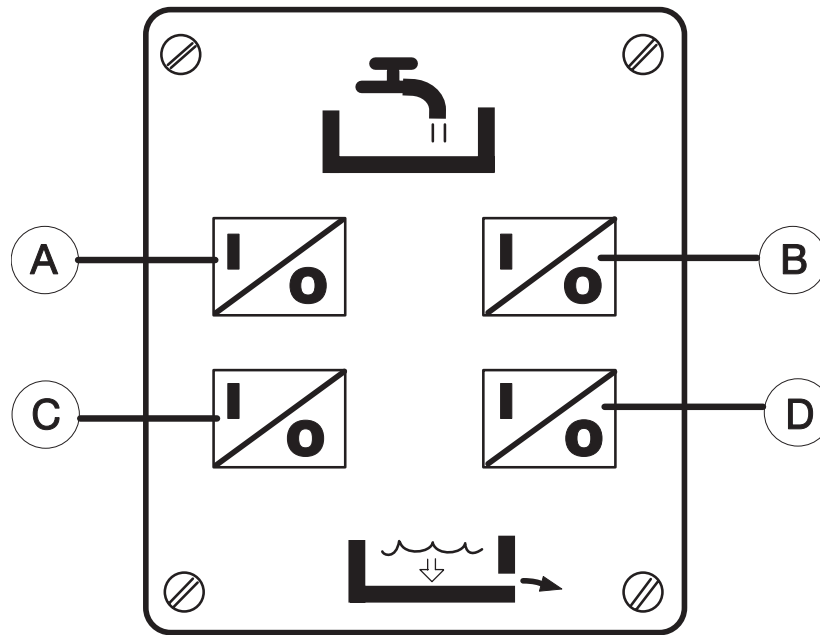


figure 15: Manual control panel

4. Reinsert the front cover. The water then starts to flow into the respective mixing tank.
5. Please now follow steps 2 to 7 of the chapter "Chemical preparation/solution at low level" (described on page 14).

CAUTION:

Do not attempt to start the filling operation when the unit is in the dilution or mixing status, i.e. less than 10 minutes after the preparation of a new batch of either solution.

1. Remove the front panel. The KODAK Automixer II Plus is now in the manual mode.
2. Connect a flexible hose of 12 mm internal diameter to the relevant outlet (left for developer, right for fixer) of the KODAK Automixer II Plus (figure 16). Ensure that the other end of the hose is in the correct processor tank.

CAUTION:

Use separate hoses for the developer or fixer, otherwise the processing solution will get contaminated and cannot be used. Please mark the hoses accordingly.

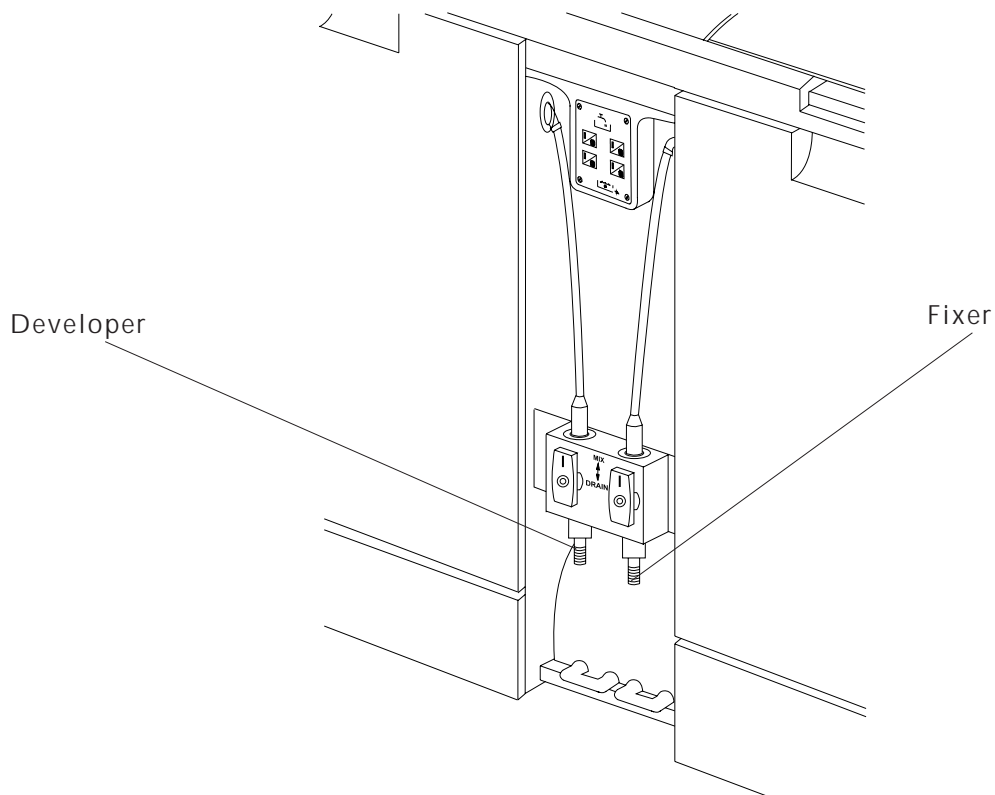
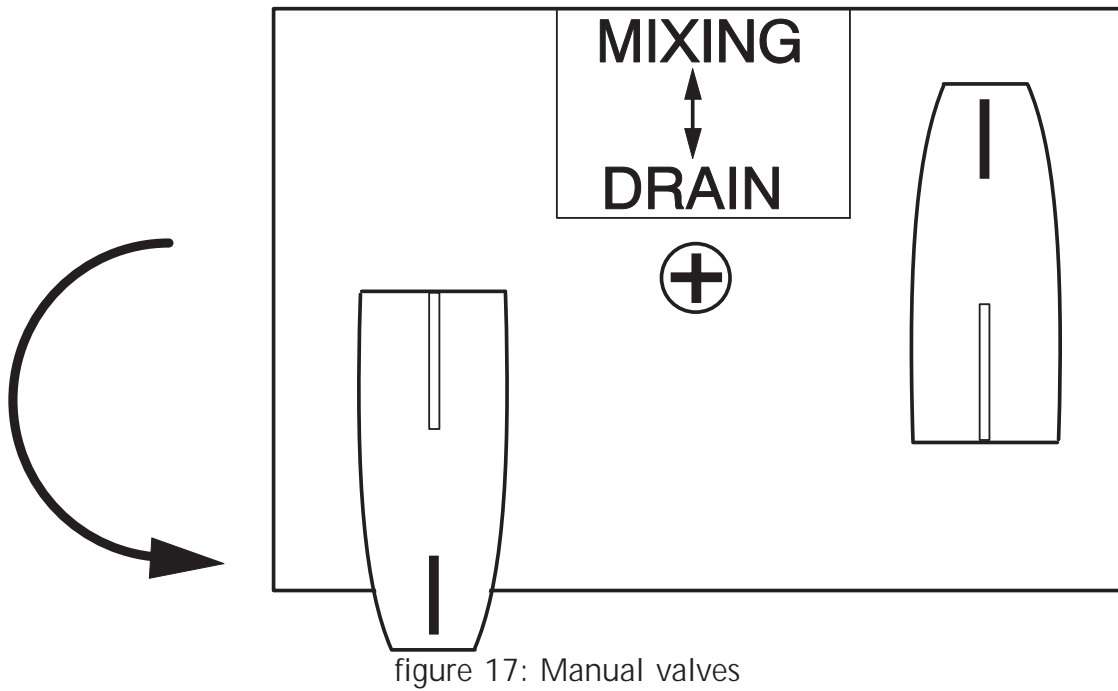
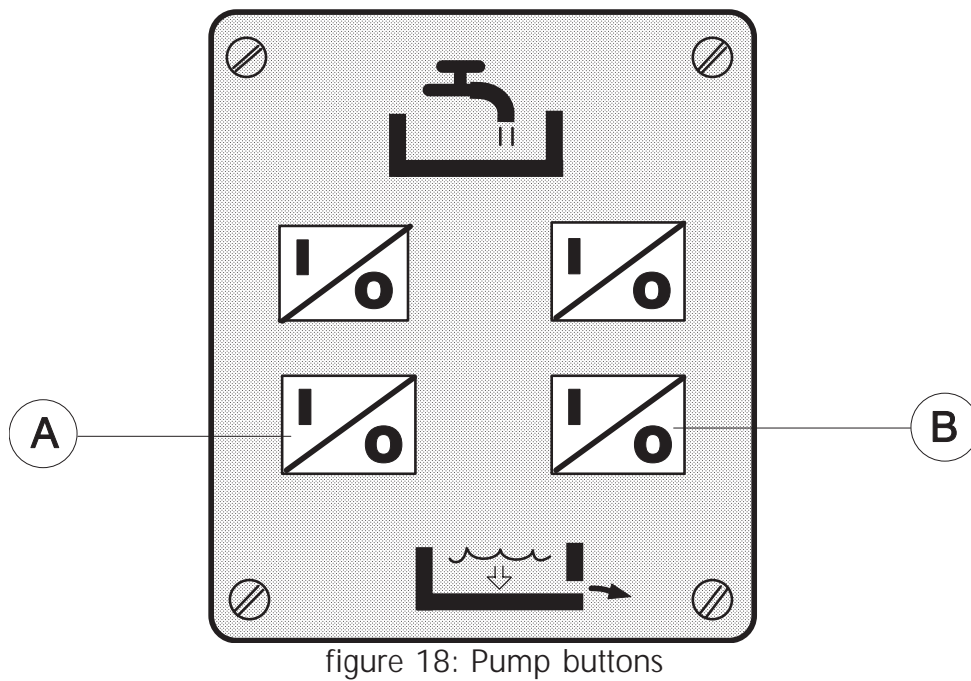


figure 16: Developer and fixer outlets

3. Turn the relevant manual valve to the “drain” position, i.e., pointing to the bottom (see figure 17).



4. Switch on the relevant pump button (A and/or B).



5. When the processor tank is filled, switch off the relevant pump (A and/or B) to stop the filling process. (Please also see *"Important information"* described below.)

CAUTION:

Take all precautions to avoid developer or fixer contamination and chemical spillage by the solution remaining in the hoses.

6. Immediately turn the relevant manual valve back into the "mixing" position, i.e. pointing upwards.
7. Remove the hose(s) carefully and thoroughly rinse it (or them) with water.
8. Put the front panel back in place. This will not be possible if you did not put the manual valve into the "mixing" position.

Important information:

Should the solution in the relevant mixing tank go down to low level during the filling process, the pump will automatically stop, and an acoustic warning signal will be given. **Do not switch on the pump again now, as the respective tank of the KODAK Automixer II Plus would then be emptied and a start-up/priming of chemicals would become necessary.**

So, if the solution goes down to low level and the above signals occur, please take the following action:

- Immediately turn the manual valve back to the mixing position.
- Remove the hose and reinsert the front panel.
- Prepare a new solution (see chapter "Chemical preparation/solution at low level", page 14).
- Do not forget to wait 10 minutes before you continue with the filling process, i.e. before you start repeating steps 1 to 8.

Draining

1. Remove the front panel. The KODAK Automixer II Plus is now in the manual mode.

WARNING:

Wear suitable protective clothing, gloves and eye/face protection when preparing the chemical solutions, and during cleaning and maintenance procedures.

2. Connect a flexible hose of 12 mm internal diameter to the relevant outlet (left for the developer, right for the fixer) of the KODAK Automixer II Plus. Make sure that the other end of the hose properly lies in a suitable container.

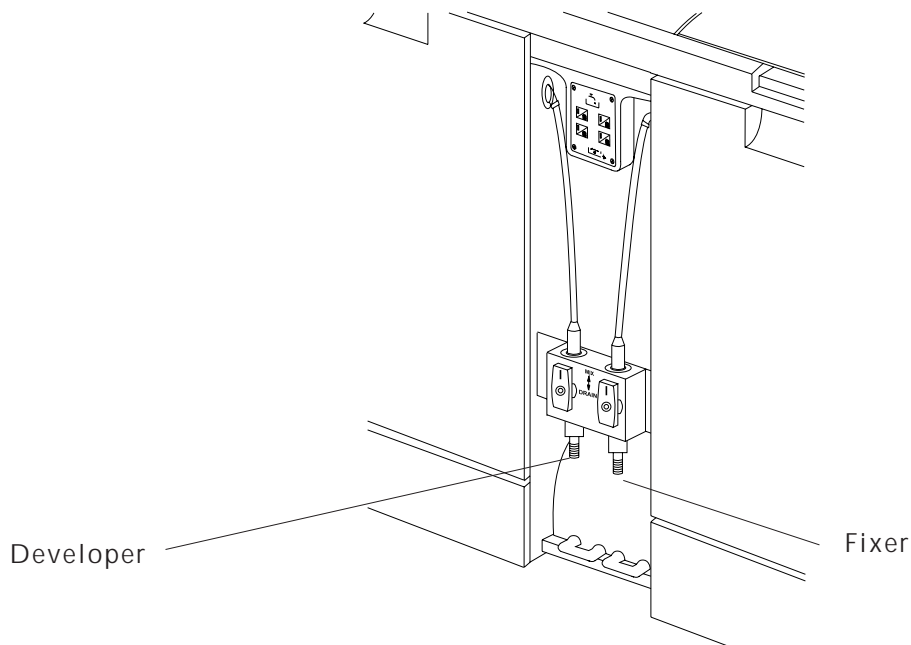


figure 19: Developer and fixer outlets

CAUTION:

Use separate hoses for the developer or fixer, otherwise the processing solution will get contaminated and cannot be used. Please mark the hoses accordingly.

3. Turn the respective manual valve downwards to the “drain” position.

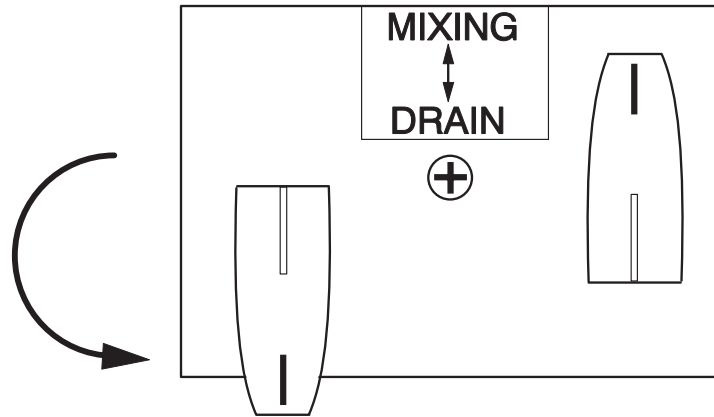


figure 20: Manual valves

4. Start the circulation pump by pressing the relevant pump button (A and/or B of figure 22).
The pump will *automatically* stop when the low level is reached (buzzer will sound intermittently). Start the circulation pump (A and/or B of figure 22) again. The buzzer will stop, and the transfer valve to the holding tank will be opened.
5. When the mixing tank is empty, block the mixing tank outlet (A of figure 21), situated at the bottom of the mixing tank with any suitable stopper. This will help the pump to drain the holding tank by preventing air from entering the pump.

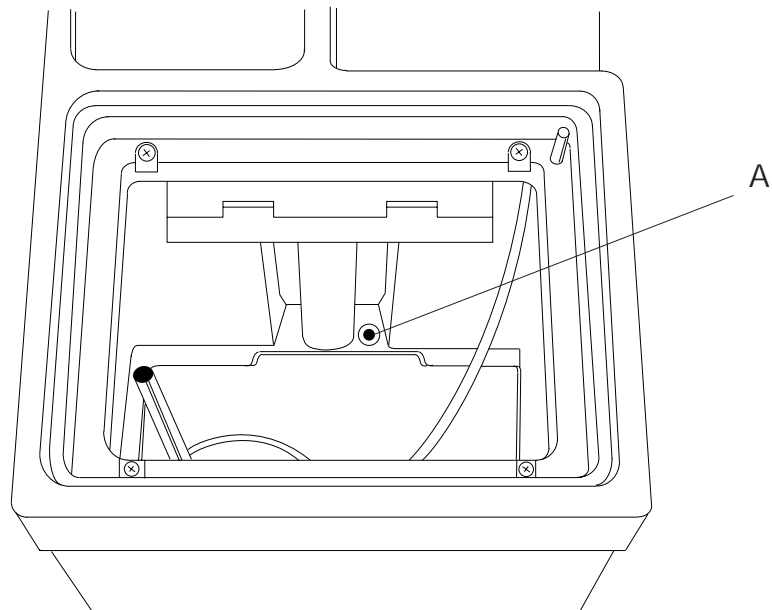


figure 21: Mixing tank

6. When the holding tank is empty as well, switch off the respective circulation pump by pressing the relevant pump button (A and/or B of figure 22) and remove the stopper from the mixing tank outlet (A of figure 21).

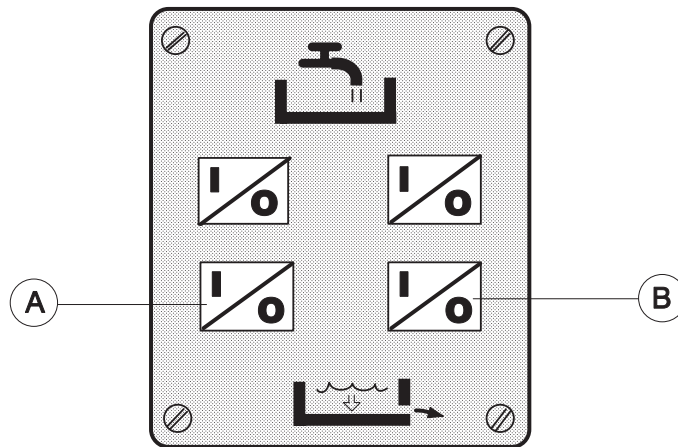


figure 22: Pump buttons

7. After having switched off the pump, please do not forget to turn the manual valve(s) back into the mixing position.
8. Remove the hose(s) carefully and thoroughly rinse it (or them) with water.

CAUTION:

Take all precautions to avoid developer or fixer contamination and chemical spillage by the solution remaining in the hoses.

9. Reinsert the front panel (this is only possible when the manual valves have been turned back into the mixing position, i.e. pointing to the top).

Cleaning

WARNING:

Wear suitable protective clothing, gloves and eye/face protection when preparing the chemical solutions, and during cleaning and maintenance procedures.

CAUTION:

A thorough rinsing (after draining) of both mixing and holding tanks is recommended on a yearly basis or when a solution has been contaminated.

Always keep in mind that you can usually not see the inside of the holding tank (i.e. when the intermediate tank bottom is not removed), so the holding tank might be dirty while the mixing tank looks clean.

A thorough cleaning of the whole tank system of the KODAK Automixer II Plus means that the unit has to be drained, then rinsed (according to the description below), and a start-up/ priming of chemicals is necessary afterwards.

Please take the following steps:

1. Remove the front cover. The KODAK Automixer II Plus is now in the manual mode. Make sure that the tank system is completely empty. Should this not be the case, please carry out steps 2 to 7 of the chapter "Draining" (see page 22).
2. Disconnect the processor tubes and shut the respective outlets with stoppers.
3. Make sure that the mixing tank outlets (A) at the bottom of the mixing tanks are free.

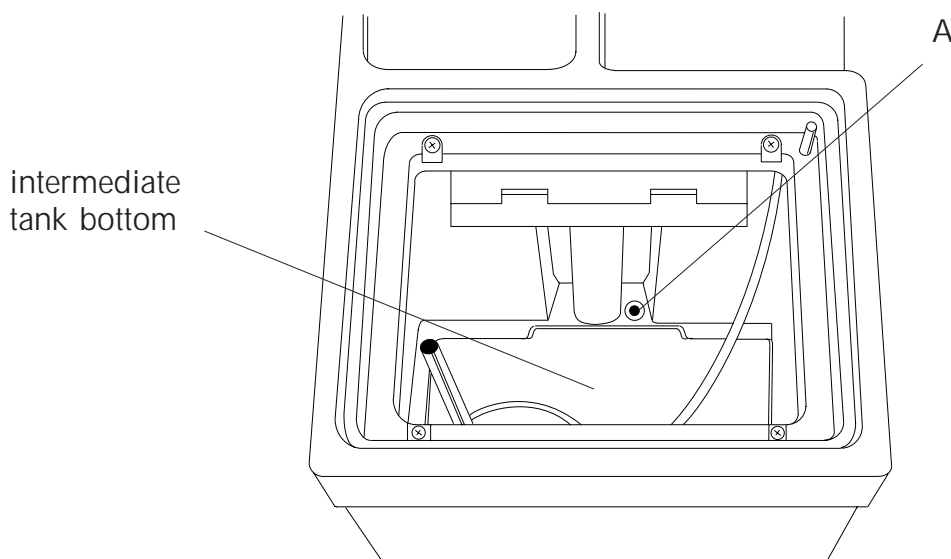


figure 23: Mixing tank

4. If necessary, wipe off remainders within the mixing tanks.

5. Make sure that the manual valves are in the mixing position, i.e. pointing to the top.

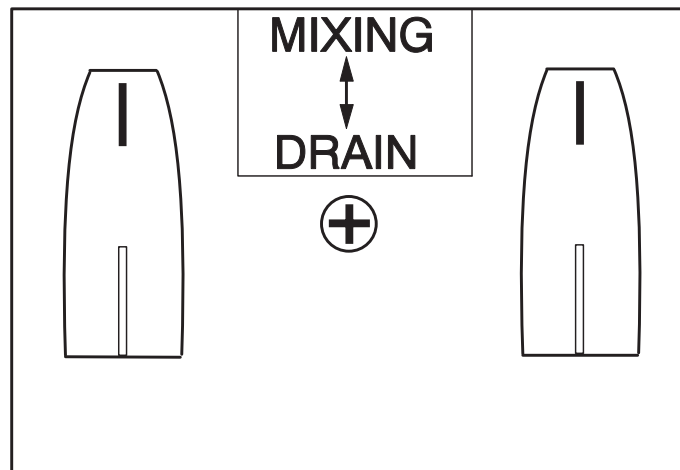


figure 24: Manual valve

To make sure that the whole unit will be rinsed thoroughly, please carry out the following procedure at least *twice*.

6. Switch on the water supply by pressing the respective water supply button (A and/or B) on the manual control panel.

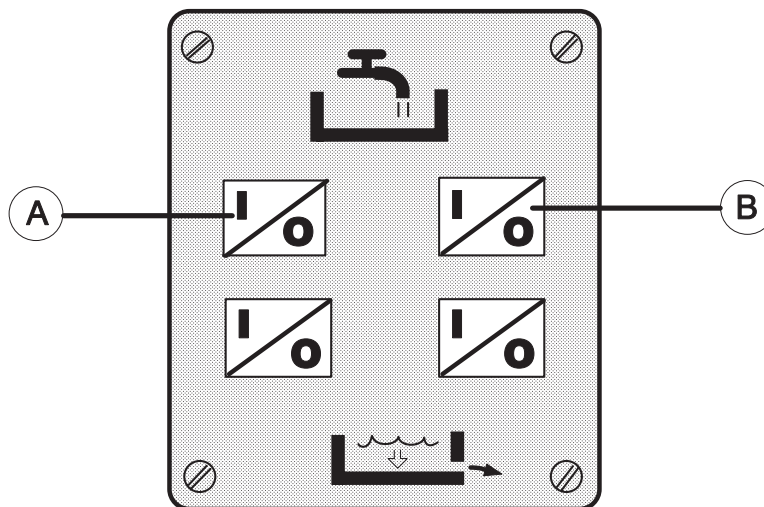


figure 25: Water supply buttons

7. When the water has reached the normal mixing level (depending on position of selector switch 20 l/5 gal or 40 l/10 gal), the water supply goes off automatically. No more water will be allowed to flow in, even if you press the water supply buttons again.

8. Reinsert the front panel, so that the transfer valve to the holding tank will be opened. Wait for approx. 5 minutes for the holding tank to fill.
9. Drain the unit (as described in the chapter "Draining" on page 22).
10. Start again with step 6 for the second procedure.
11. After the unit has been cleaned, a start-up/priming procedure is necessary (see page 17).

Moving the KODAK Automixer II Plus

Always switch off the KODAK Automixer II Plus before moving it, otherwise the solution may splash and start the mixing cycle at the wrong time.

Avoid moving the KODAK Automixer II Plus when either unit is full of solution.

Always lock the front casters once the KODAK Automixer II Plus is in place and levelled. For levelling, use a spirit level and adjust the casters. Then lock the two front casters.

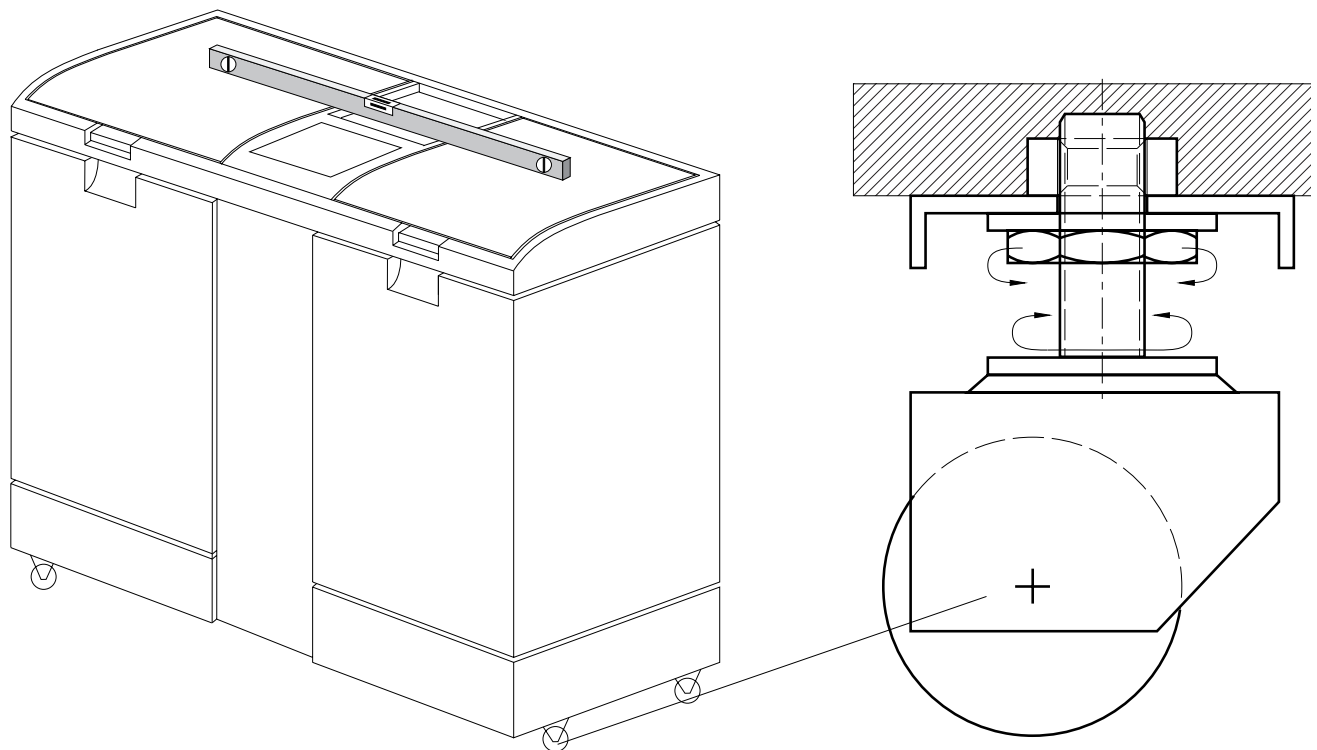


figure 26: Levelling the KODAK Automixer II Plus

3. MAINTENANCE

WARNINGS:

Before starting any maintenance procedures, switch off the unit and pull out the power-supply plug.

Wear suitable protective clothing, gloves and eye/face protection when preparing the chemical solutions, and during cleaning and maintenance procedures.

Whenever chemicals have been spilled, please wipe them up immediately.

Weekly

Clean the templates and the top covers with a warm, moist cloth. If necessary, clean the outside of the KODAK Automixer II Plus with a sponge.

WARNING:

The KODAK Automixer II Plus must not be cleaned using running water.

Once a year

Annually or after a low activity period, clean the KODAK Automixer II completely: drain (see page 22), clean (see page 25), and start-up again (see page 17).

Chemistry

Make the right choice regarding the mixing volume. Choose the 10 gallon or 40 litre version only if your film consumption is higher than 50m²/week. The solution should be used up within 14 days. This will avoid developer oxidation.

Should you, by mistake, put the wrong chemicals in a tank (developer into the fixer tank or fixer into the developer tank) you will have to drain the respective tank completely and clean it at least twice. Then start-up/priming of chemicals will be necessary.

Oxidation

After a long period of low or no activity, the developer might become oxidized (deep brown colour). As this can affect the quality of film processing, the whole tank system should then be cleaned thoroughly (see chapters "Draining", page 22, and "Cleaning", page 25) and a chemical start-up process carried out (page 17).

4. TROUBLESHOOTING

Problem/Alarm signal:	What happened:	Possible causes:	Possible remedies:
Approx. 4 minutes after filling in the chemicals; alternate blinking of rinse LED and refill LED of the respective chemical; beeper sounding intermittently.	After having filled in the fixer or developer the chemical level is still too low.	Wrong filling capacity of the bottles. Spilled chemicals. Valve or mixing tank leaking.	Check whether all bottles are open. If not, please open them. Add 0.5 l of water. Call your Kodak Service Provider.
Overflow warning light blinking; beeper sounding intermittently; respective rinse LED also blinking, if not in the manual mode.	Water does not run in.	Water supply not open. Defective water valve.	Please open water supply. If it is already open, switch the unit off and on again. Should this not solve the problem, please call your Kodak Service Provider.
Overflow warning light is on continuously; beeper sounding continuously.	Solution splashing onto the overflow level when the unit is being moved. Water level too high.	Massive vibrations. Moving the unit when it is almost full and not switched off. Defective water valve.	Switch off the KODAK Automixer II Plus, and then switch it on again. Please call your Kodak Service Provider.
After switching on the KODAK Automixer II Plus or whenever the error occurs, there will be 1 long and 5 short beeps; the signals will be repeated every 15 minutes.	Battery RAM getting empty	Aging (more than 10 years old).	Please call your Kodak Service Provider.
If the front panel cannot be put back in place.		Manual valves are not in the "mixing" position.	Make sure that manual valves are in "mixing position" (i.e. pointing upwards).

5. SPECIFICATION

Size and Weight

Length:	81 cm/31.89 in
Width:	41 cm/16.14 in
Height:	84 cm/33.07 in including rollers
Weight:	empty 40 kg/88.2 lb
	filled with 20 l each of developer bath and fixer bath 115 kg/253.5 lb
	filled with 40 l each of developer bath and fixer bath 158 kg/348.3 lb
Volume Holding Tank	6.5 litres
Volume Mixing Tank	44 litres

Noise Level

Sound pressure level in operator's position: 70 dB(A)

Electrical

100 V \pm 10% 50/60 Hz., convertible to
120 V \pm 10% 50/60 Hz. or
220 V \pm 10% 50/60 Hz. or
230 V \pm 10% 50/60 Hz.

The unit is provided with an IEC plug

Water

Temperature:	4 - 32°C
Water inlet:	3/4 in
Water pressure:	14 - 88 PSI = 1 - 6 bar
Water inlet via filter	
Water discharge:	For maintenance and cleaning, a water outlet with a diameter of 20 mm/0.8 in is required (max. 55 cm/21.65 in above floor).

Replenishment

The hose diameter depends on the distance between the Automixer II Plus and the processor:

up to 8 m/approx. 9 yd:	hose diameter \geq 10.0 mm/0.4 in
8 to 15 m/approx. 9 to 16 yd:	hose diameter \geq 12.5 mm/0.5 in

When two processors are connected to one Automixer II Plus, the following hose diameters are required:

up to 8 m/approx. 9 yd:	hose diameter \geq 12.5 mm/0.5 in
8 to 15 m/approx. 9 to 16 yd:	hose diameter \geq 15.0 mm/0.6 in

Chemicals

Use KODAK chemicals in the Automixer II Plus.

Manufactured by

Kodak AG
70323 Stuttgart
Federal Republic of Germany

CE 89/336/EEC, 73/23/EEC

Kodak AG
Hedelfinger Str. 54 - 60
70327 Stuttgart
Germany

Publication No. OI 3439-1/97-Eng
Printed in France

KODAK and X-OMAT are trademarks.

