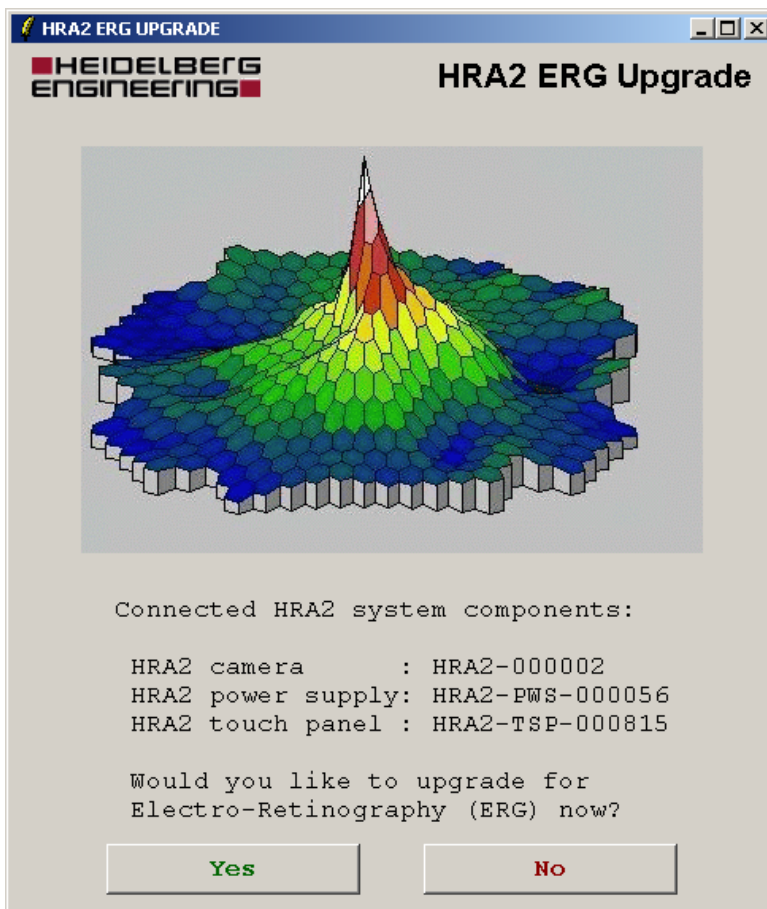


## **Heidelberg Retina Angiograph 2 Electro-Retinography (ERG) Upgrade *Installation and Use***

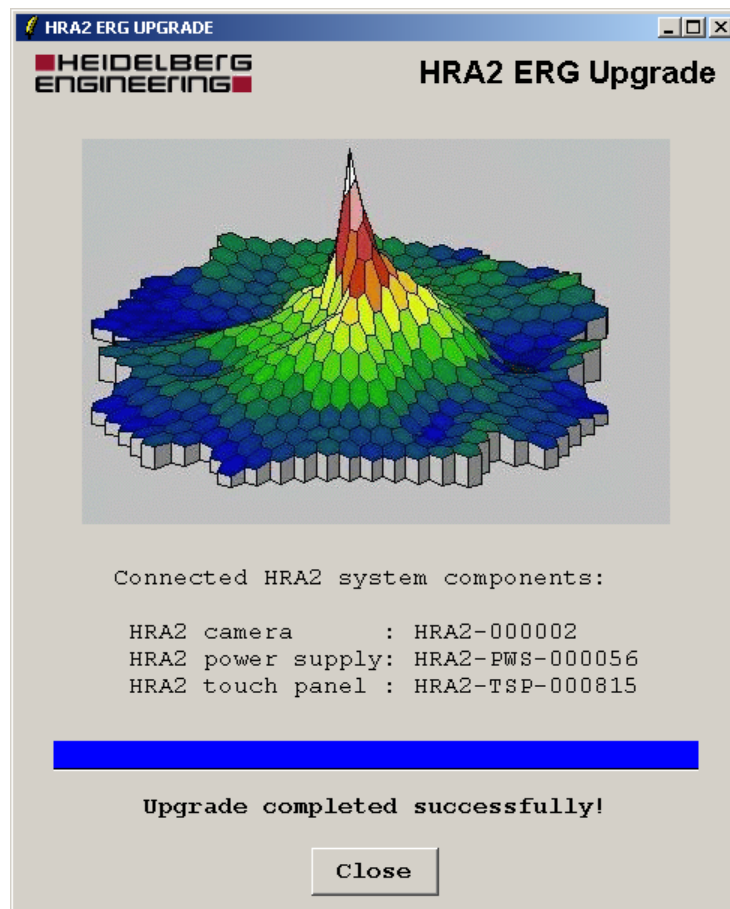
This document describes the Heidelberg Retina Angiograph 2 (HRA2) upgrade for electro-retinography. This upgrade is needed for use of the HRA2 together with third party ERG devices.

### **Installation**

1. Connect the PC to the HRA2 as described in the HRA2 manual.
2. Switch on the HRA2.
3. Insert the CD labeled "Heidelberg Retina Angiograph 2 – ERG upgrade" into the CD-ROM drive. The installation program will start automatically after a few seconds. The following window will be shown:



4. Compare the power supply serial number to the serial number on your upgrade CD. ***The serial numbers must correspond otherwise the upgrade will fail.*** If the serial numbers differ or if an error message appears that complains about the current firmware version, please contact our support.
5. Press the “Yes” button and then wait for the upgrade to complete. Do not switch off the system during upgrade. The HRA2 system will perform a reset after a successful upgrade.



6. Switch off the HRA2 system.

7. Remove the protective cap from the large yellow extension port at the rear of the HRA2 power supply:



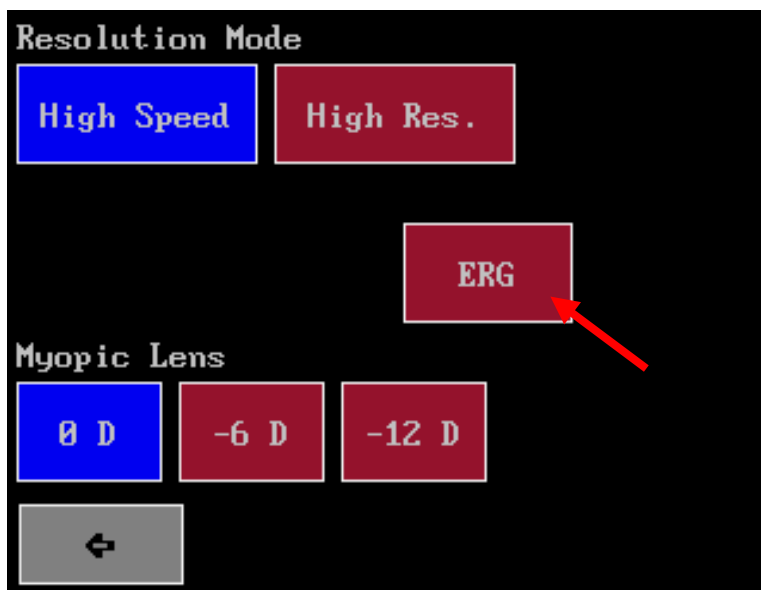
8. Plug the ERG connection cable into the large yellow extension port:



9. The HRA2 system is now ready for electro-retinography.

## ERG Operation

To activate ERG mode select the “more” button on the touch panel main screen. A new button “ERG” will appear on the options screen. To activate ERG mode, press this button. To indicate the active ERG mode it will change its color to blue.



If ERG mode is activated the HRA2 behavior differs from other modes of operation:

- The Laser mode cannot be changed any more: The IR laser is always on; the blue laser is used to project the ERG patterns.
- Laser power cannot be changed any more (but sensitivity can).
- Scan angle is always 15 degrees in high-speed mode.
- The internal fixation targets are switched off. Note that the targets are not switched on again automatically when the ERG mode is left.
- By changing the HRA2 filter setting, it is possible to decide if the ERG pattern can be seen in the HRA2 image. In setting “R” the patterns are visible, in mode “A” the patterns are blocked out.

To switch off ERG mode press the “ERG” button again or go to freeze (standby) mode.

For further instructions please study the documentation of the third party ERG device.