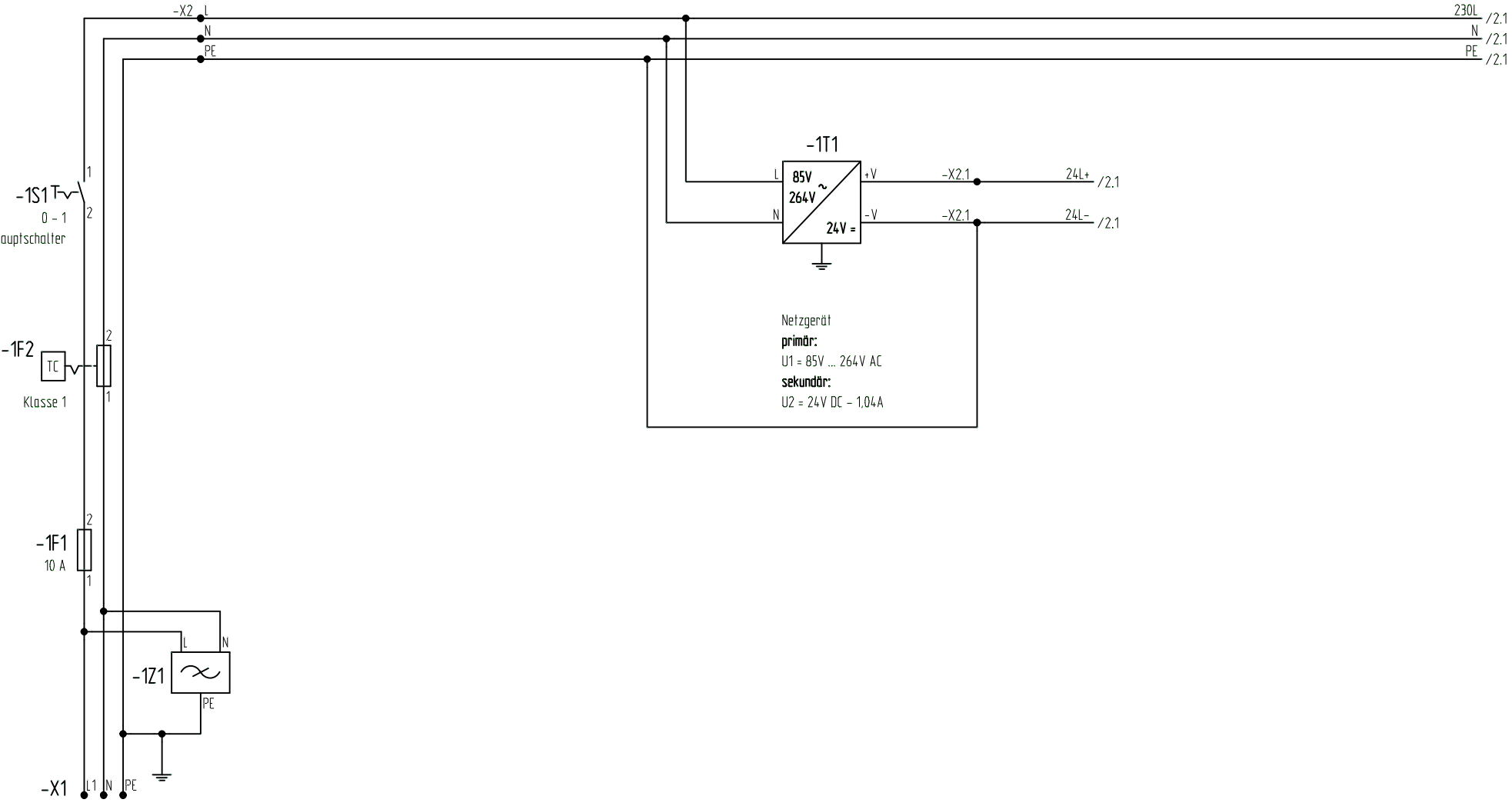


Weiergabe sowie Vervielfältigung dieses Dokuments, Verwertung und Mitteilung seines Inhalts sind verboten, soweit nicht ausdrücklich gestattet. Zuwiderhandlungen verpflichten zu Schadenersatz. Alle Rechte für den Fall der Patent-, Gebrauchsmuster- oder Geschmacksmusterrechte vorbehalten.



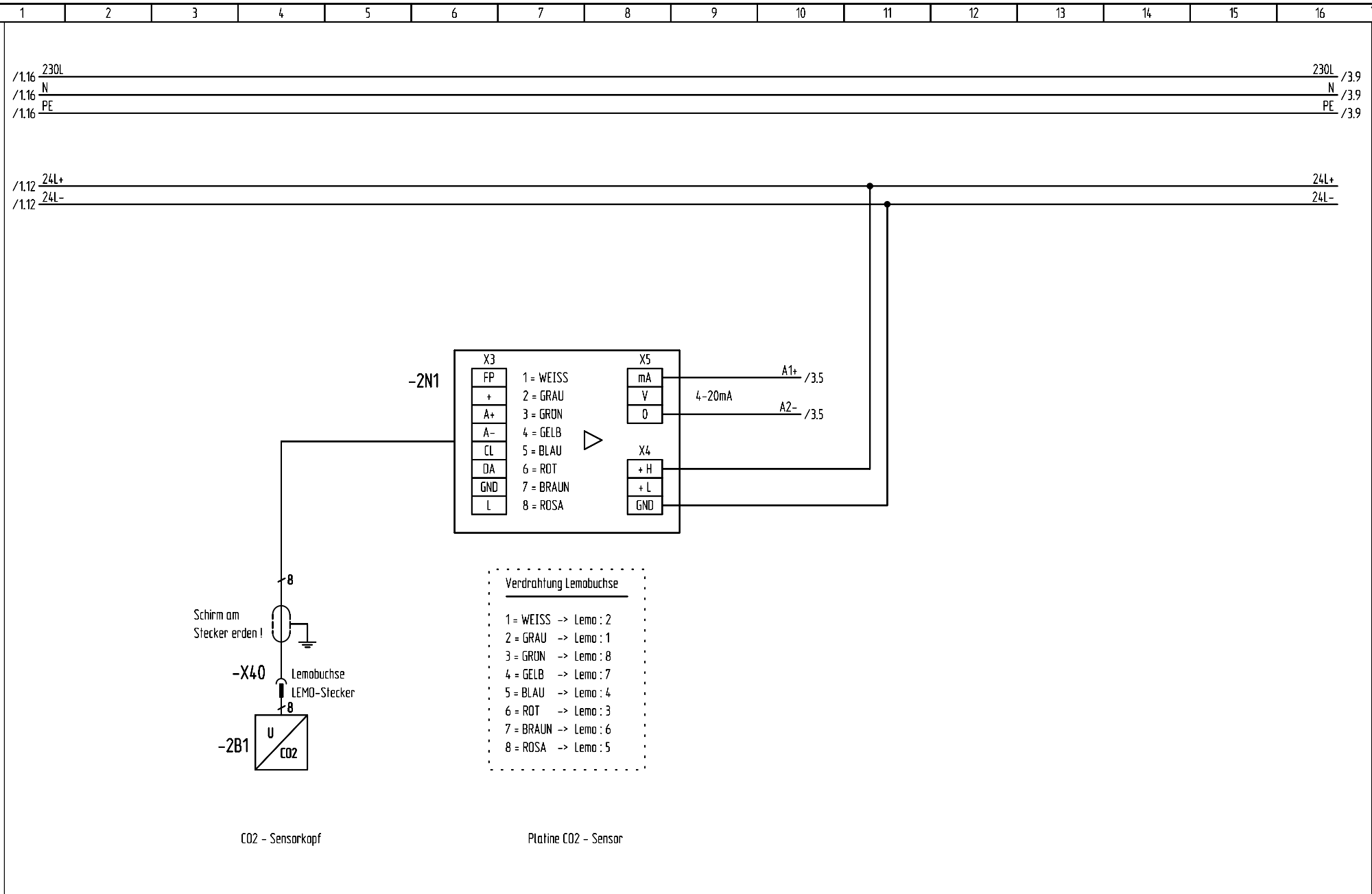
Netz-Einspeisung
230V/50Hz
1/N/PE

Technische Daten	
P=	1,4kW
U=	230 V / 50 Hz
I=	6,2 A

Netzgerät
primär:
U1 = 85V ... 264V AC
sekundär:
U2 = 24V DC - 1,04A

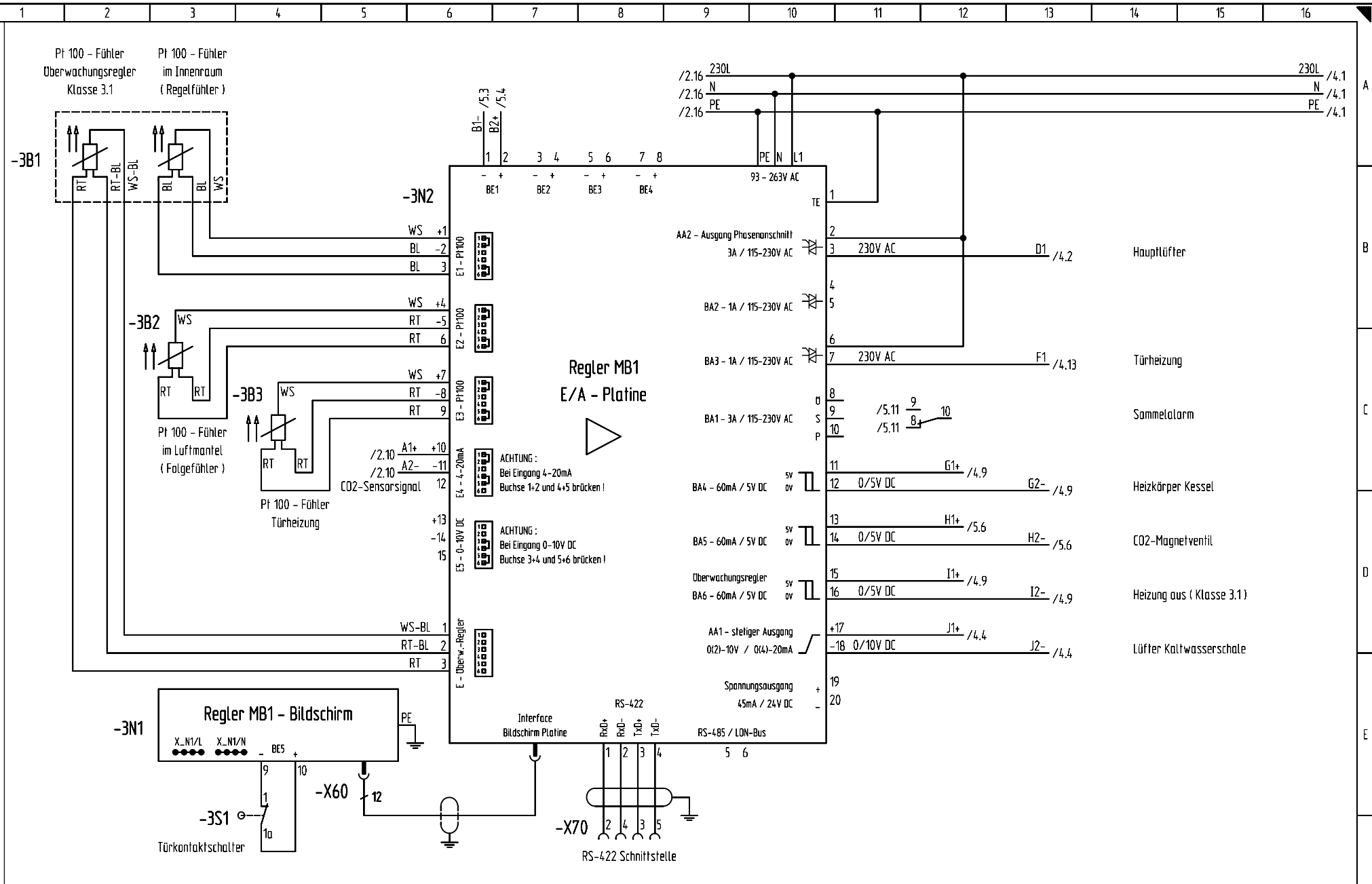
Doppel-Pr100 und Druckschalter				Datum	03.11.2006	STANDARDSCHALTPLAN CB 210 (E2)				Netz-Einspeisung		Modell CB 210 (E2)		=							
G	ab Serie W0644	07.12.2006	SME	Bearb.	SME					Art.-Nr. 9040-0013/0015		Datei 56023007.PRO		Blatt 1							
Zustand		Datum		Name		Norm		Urspr.		Ers. f.		Ers. d.		Stramlaufplan		Art.-Nr. 9040-0013/0015		Datei 56023007.PRO		Blatt 1	
																von 6 Bl.					

Weigerung sowie Vervielfältigung dieses Dokuments, Verwertung und Mitteilung seines Inhalts sind verboten, soweit nicht ausdrücklich gestattet. Zuwiderhandlungen verpflichten zu Schadenersatz. Alle Rechte für den Fall der Patent-, Gebrauchsmuster- oder Geschmacksmusterertragung vorbehalten.



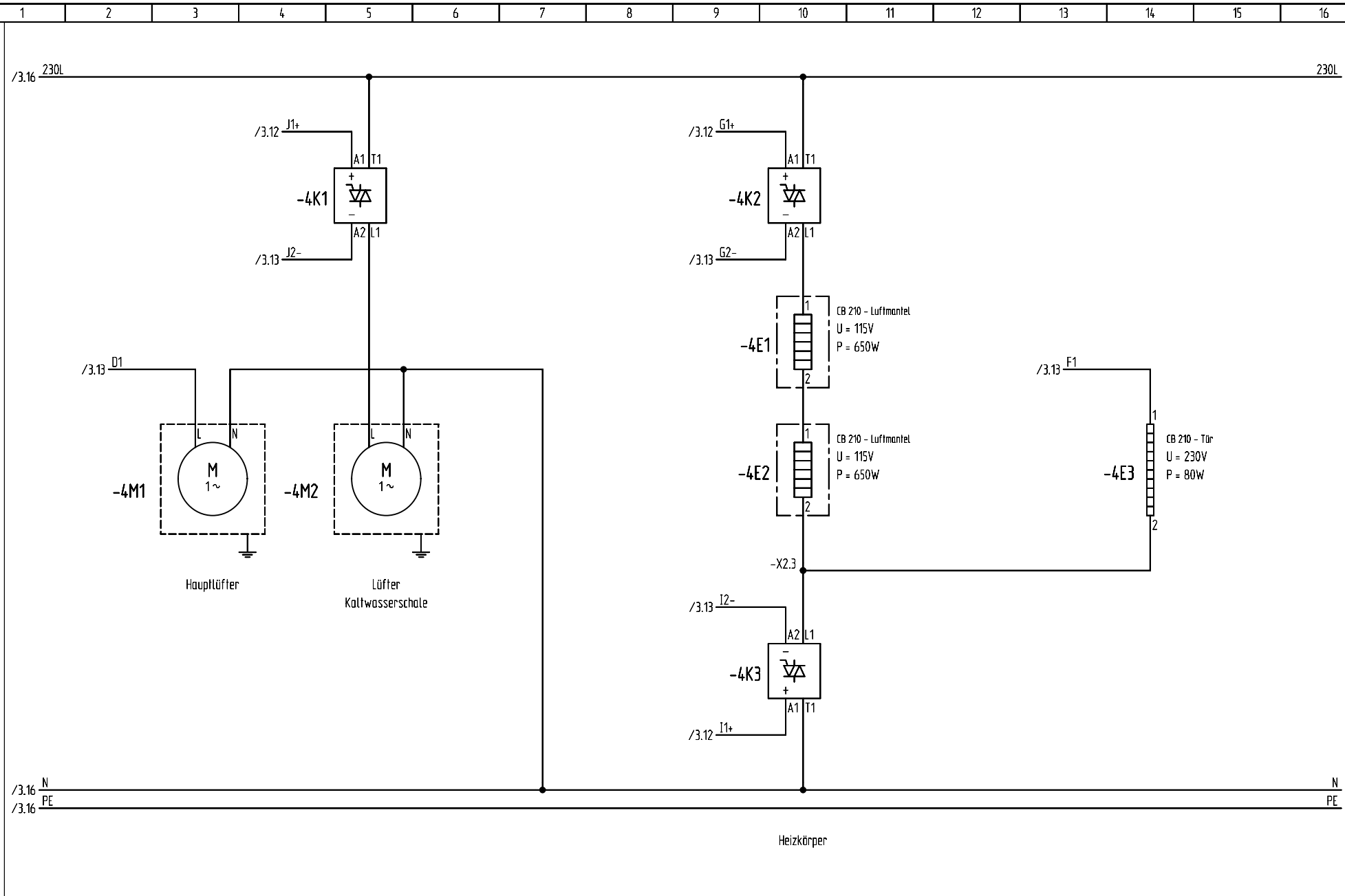
Doppel-PI100 und Druckschalter				Datum	03.11.2006	STANDARDSCHALTPLAN CB 210 (E2)				Steuerung CO2-Messsystem		Modell CB 210 (E2)		=	
G	ab Serie W0644	07.12.2006	SME	Bearb.	SME					Art.-Nr. 9040-0013/0015		Datei 56023007.PRO		Blatt 2	
Zustand Änderung		Datum	Name	Norm	Urspr.	Ers. f.	Ers. d.	Stromlaufplan		Art.-Nr. 9040-0013/0015		Datei 56023007.PRO		von 6 Bl.	

Weiergabe sowie Vervielfältigung dieses Dokuments, Verwertung und Mitteilung seines Inhalts sind verboten, soweit nicht ausdrücklich gestattet. Zuwiderhandlungen verpflichten zu Schadenersatz. Alle Rechte für den Fall der Patent-, Gebrauchsmuster- oder Geschmacksmusterertragung vorbehalten.



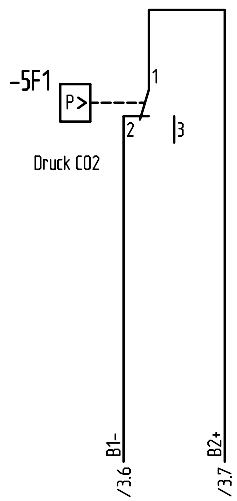
Doppel-Pt100 und Druckschalter		Datum 03.11.2006		STANDARDSCHALTPLAN CB 210 (E2)		BINDER		Steuerung und Regelung Heizung		Modell CB 210 (E2)		=			
G	ab Serie W0644	07.12.2006	SME					Bearb. SME	Art.-Nr. 9040-0013/0015		Datei 56023007.PRO		Blatt 3		
Zustand Änderung		Datum	Name	Norm	Urspr.	Ers. f.	Ers. d.	Stromlaufplan		Art.-Nr. 9040-0013/0015		Datei 56023007.PRO			
1	2	3	4	5	6	7	8	9	10	11	12	13	14	15	16

Weiergabe sowie Vervielfältigung dieses Dokuments, Verwertung und Mitteilung seines Inhalts sind verboten, soweit nicht ausdrücklich gestattet. Zuwiderhandlungen verpflichten zu Schadenersatz. Alle Rechte für den Fall der Patent-, Gebrauchsmuster- oder Geschmacksmusterertragung vorbehalten.

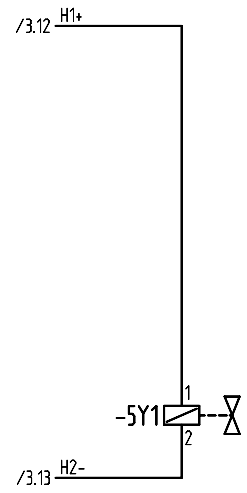


Doppel-PI100 und Druckschalter				Datum	03.11.2006	STANDARDSCHALTPLAN CB 210 (E2)				Steuerung Lüfter und Heizkörper		Modell		CB 210 (E2)	=			
G	ab Serie W0644	07.12.2006	SME	Bearb.	SME					Strömungsplan		Art.-Nr.		9040-0013/0015	Datei	56023007.PRO	Blatt 4	
Zustand		Änderung		Datum	Name					Norm	Urspr.	Ers. f.	Ers. d.			von 6 Bl.		

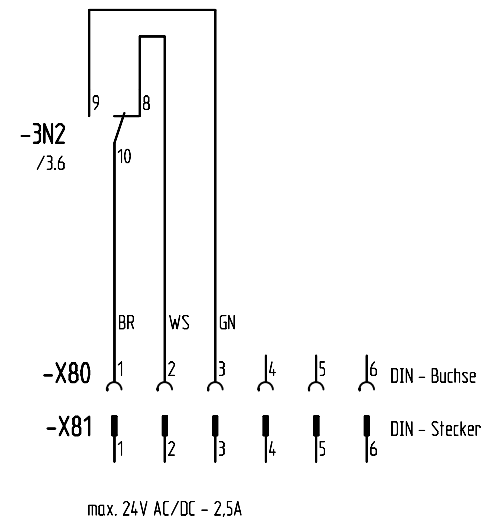
Weitergabe sowie Vervielfältigung dieses Dokuments, Verwertung und Mitteilung seines Inhalts sind verboten, soweit nicht ausdrücklich gestattet. Zuwiderhandlungen verpflichten zu Schadenersatz. Alle Rechte für den Fall der Patent-, Gebrauchsmuster- oder Geschmacksmusterertragung vorbehalten.



CO2-Druckschalter



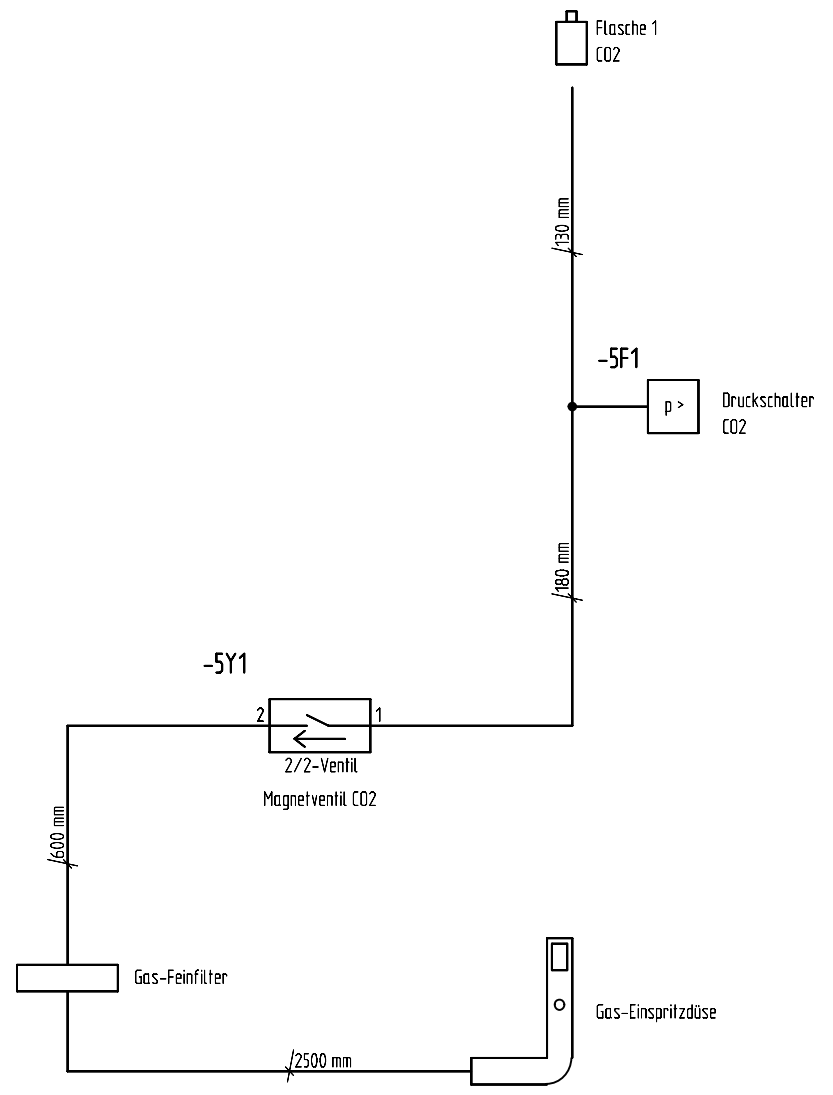
CO2-Magnetventil 2/2




potentialfreier Kontakt
Sammelalarm

Doppel-PI100 und Druckschalter				Datum	03.11.2006	STANDARDSCHALTPLAN CB 210 (E2)				Steuerung CO2-Regelung und Sammelalarm		Modell		CB 210 (E2)		=					
G	ab Serie W0644	07.12.2006	SME	Bearb.	SME							Art.-Nr.		9040-0013/0015		Datei		56023007.PRO		Blatt 5	
Zustand		Änderung		Datum	Name							Norm	Urspr.	Ers. f.	Ers. d.	Stramlaufplan				van 6 Bl.	

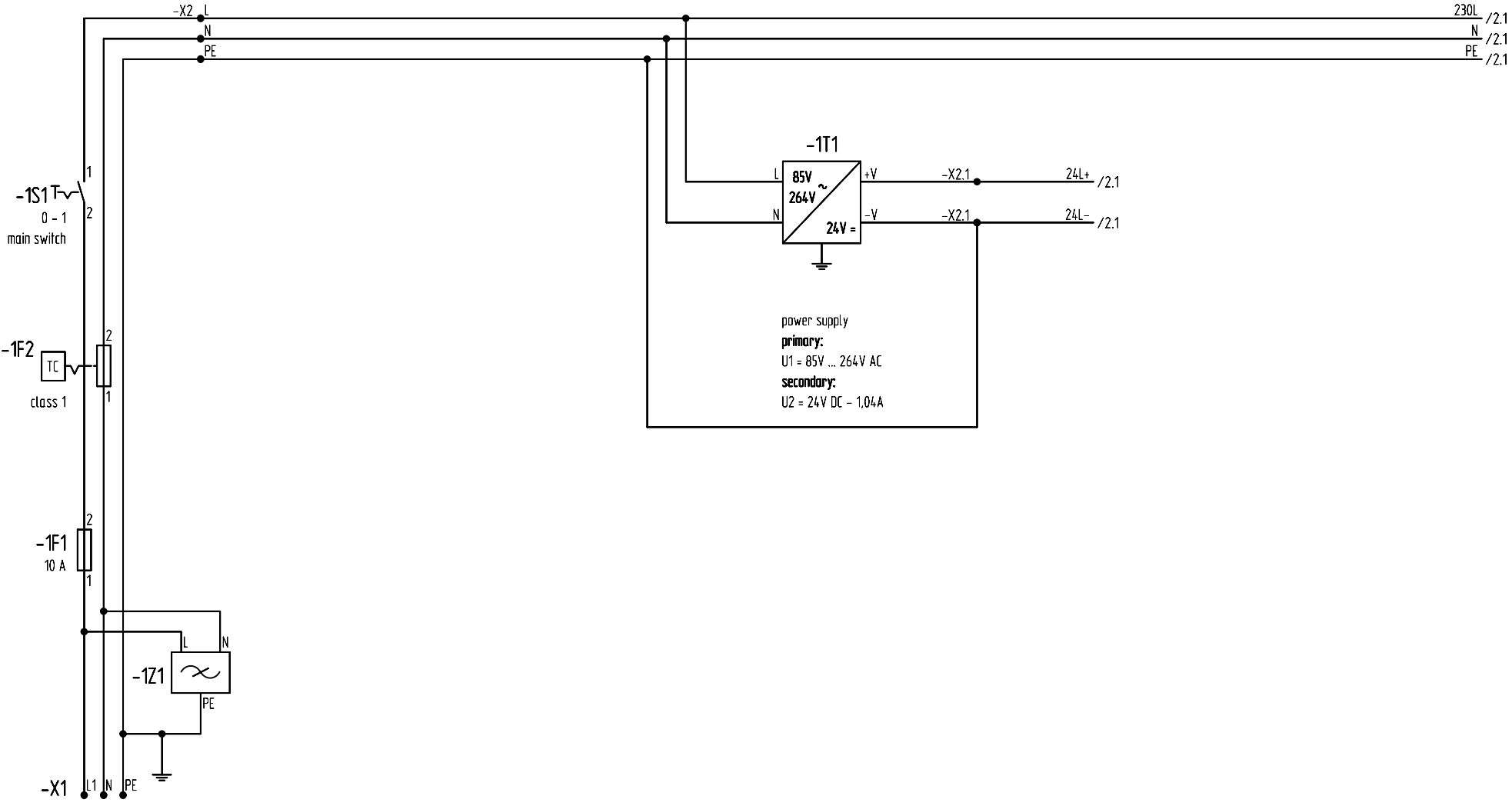
Weiergabe sowie Vervielfältigung dieses Dokuments, Verwertung und Mitteilung seines Inhalts sind verboten, soweit nicht ausdrücklich gestattet. Zuwiderhandlungen verpflichten zu Schadenersatz. Alle Rechte für den Fall der Patent-, Gebrauchsmuster- oder Geschmacksmusterertragung vorbehalten.



Doppel-Pr100 und Druckschalter			Datum	03.11.2006	STANDARDSCHALTPLAN CB 210 (E2)				Verschlauchung Gasanschluss PNEUMATIK - PLAN		Modell		CB 210 (E2)		=						
G	ab Serie W0644	07.12.2006	SME	Bearb.							SME	Art.-Nr.		9040-0013/0015		Datei		56023007.PRO		Blatt 6	
Zustand		Anderung	Datum	Name							Norm	Urspr.	Ers. f.	Ers. d.	Stramlaufplan						van 6 Bl.

	1	2	3	4	5	6	7	8	9	10	11	12	13	14	15	16
A	Pos.	Bmk.	Bezeichnung							Teilenummer				Bl./Pf.		
	1	-1S1	Wippschalter (1S)							5019-0019				1.2		
	2	-1F1	Sicherung mitteltrage MT 10A											1.2		
	B			Sicherung mitteltrage MT 10A							5006-0012				1.2	
				Sicherungssockel FUL							5006-0038				1.2	
				Schraubverschlusskappe FUL 5x20mm							5006-0039				1.2	
		3	-X1	Geratezuleitung 230VAC											1.2	
	C			Geratezuleitung 230VAC							5023-0002				1.2	
				Kabelzugentlastung (3 Adern)							6002-0004				1.2	
		4	-1F2	Temperatursicherung 229°C (-10K)							5006-0037				1.2	
		5	-1Z1	Entstorkondensator 1-Phase							5026-0001				1.3	
6		-X2	Klemmleiste											1.3		
D				Durchgangsklemme grau (4L)							5024-0020				1.3	
			Durchgangsklemme blau (4L)							5024-0021				1.3		
			Schutzleiterklemme grun-gelb (4L)							5024-0022				1.3		
			Abschlussplatte orange (4L)							5024-0023				1.3		
			Querbrucker isoliert grau							5024-0011				1.3		
			Endklammer							5024-0010				1.3		
E	7	-1T1	Netzgerat 85 ... 264VAC / 24VDC (1,0A)							5020-0026				1.9		
	8	-X40	Kabel+Buchse CO2-Sensor 2,50m							5023-0052				2.4		
	9	-2B1	CO2 / FPI 2 - Sensarkopf							5002-0023				2.4		
F	10	-2N1	Platine CO2 / FPI 2-Sensor							5014-0063				2.6		
	11	-3B1	Temp.-Fuhler 2xP1100 3-Leiter gerade							5002-0043				3.2		
F	Doppel-P1100 und Druckschalter			Datum	03.11.2006	STANDARDSCHALTPLAN					Modell CB 210 (E2)			=		
	6	ab Serie W0644	07.12.2006	SME	Bearb.	SME	CB 210 (E2)				+					
				Gepr.	VS											
	Zustand	anderung	Datum	Name	Norm	Urspr.	Ers. f.	Ers. d.	Produktionsstuckliste	Art.-Nr.	9040-0013/0015	Datei	56023007.PRO	Blatt 1	von 2 Bl.	

The reproduction, distribution and utilization of this document as well as the communication of its contents to others without explicit authorization is prohibited. Offenders will be held liable for the payment of damages. All rights reserved in the event of the grant of a patent, utility model or design.



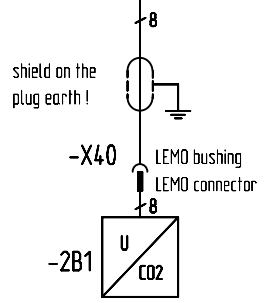
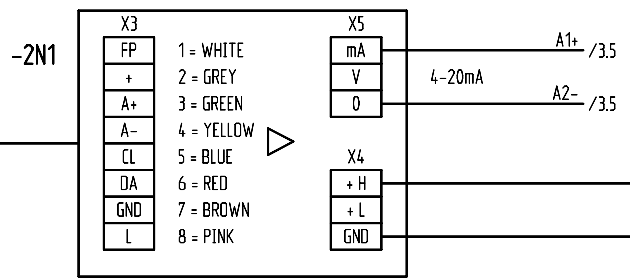
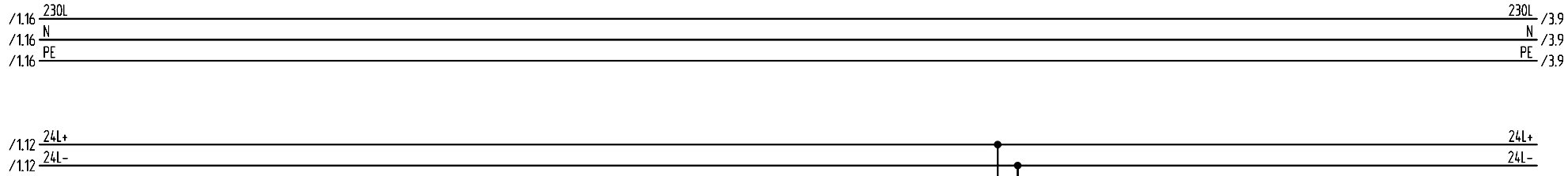
power supply
primary:
 U1 = 85V ... 264V AC
secondary:
 U2 = 24V DC - 1,04A

power-supply
 230V/50Hz
 1/N/PE

technical data	
P=	1,43kW
U=	230 V / 50 Hz
I=	6,2 A

F	double-P100 and pressure switch			date	03.11.2006	WIRING STANDARD CB 210 (E2)		power-supply	model		CB 210 (E2)	=		
	G	start W0644	07.12.2006	SME	edited				SME			+		
					tested	VS								
	state	change	date	name	norm	origin	substitute for	replaced by	wiring diagram	art.-No.	9040-0013/0015	file	56023007.PRO	page 1 from 6 pg.

The reproduction, distribution, distribution and utilization of this document as well as the communication of its contents to others without explicit authorization is prohibited. Offenders will be held liable for the payment of damages. All rights reserved in the event of the grant of a patent, utility model or design.



wiring LEMO bushing

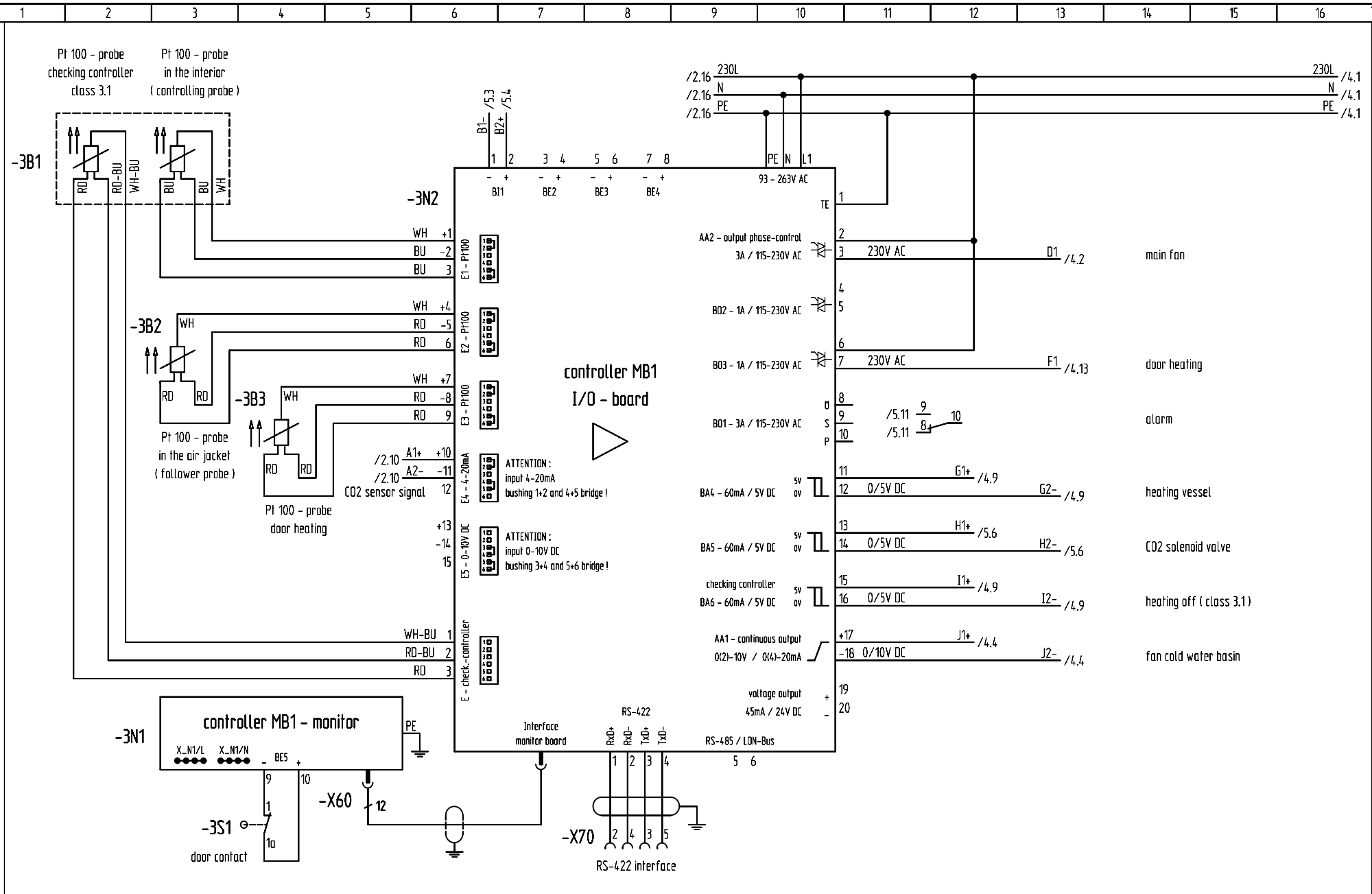
1 = WHITE	->	Lemo : 2
2 = GREY	->	Lemo : 1
3 = GREEN	->	Lemo : 8
4 = YELLOW	->	Lemo : 7
5 = BLUE	->	Lemo : 4
6 = RED	->	Lemo : 3
7 = BROWN	->	Lemo : 6
8 = PINK	->	Lemo : 5

CO2 - sensor head

board CO2 probe

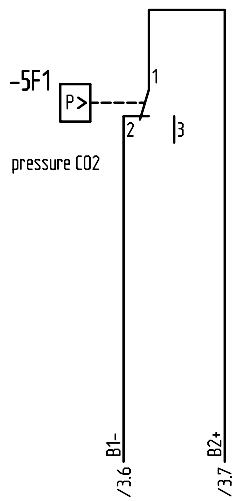
F	double-P1100 and pressure switch		date	03.11.2006	WIRING STANDARD CB 210 (E2)				control CO2 measuring unit		model		CB 210 (E2)		=
	G	start W0644	07.12.2006	SME							edited	SME	9040-0013/0015		56023007.PRO
			tested	VS								page 2			
	state	change	date	name	norm	origin	substitute for	replaced by	wiring diagram	art.-No.	9040-0013/0015	file	56023007.PRO	from 6 pg.	

The reproduction, distribution and utilization of this document as well as the communication of its contents to others without explicit authorization is prohibited. Offenders will be held liable for the payment of damages. All rights reserved in the event of the grant of a patent, utility model or design.

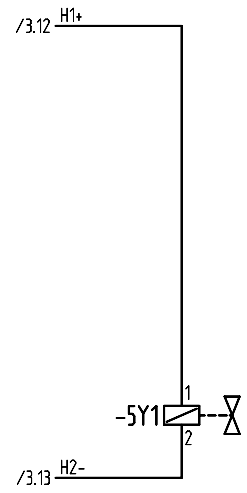


double-Pt100 and pressure switch		date 03.11.2006		WIRING STANDARD CB 210 (E2)		BINDER		control system heating		model CB 210 (E2)		=	
6	start W0644	07.12.2006	SME							edited	SME	+	
state	change	date	name	norm	origin	substitute for	replaced by	wiring diagram	art.-No.		from 6 pg.		

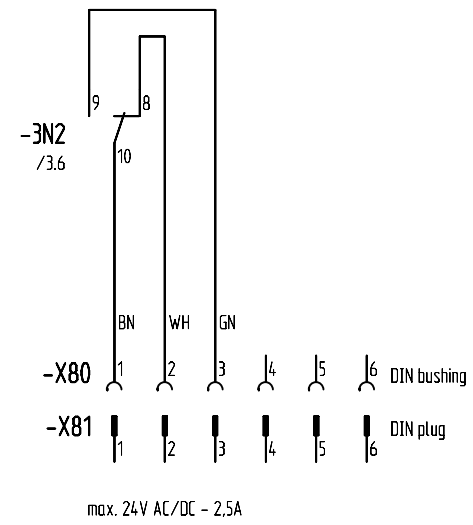
The reproduction, distribution and utilization of this document as well as the communication of its contents to others without explicit authorization is prohibited. Offenders will be held liable for the payment of damages. All rights reserved in the event of the grant of a patent, utility model or design.



CO2 manometric switch



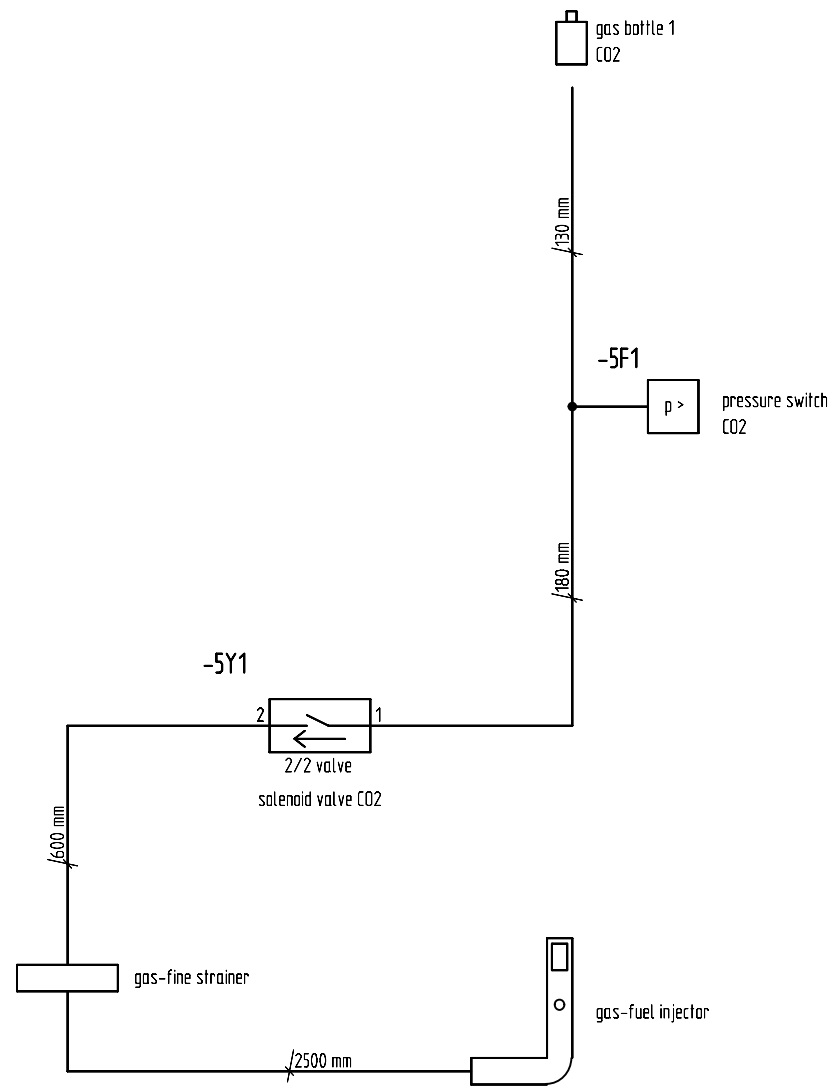
CO2 solenoid valve 2/2



floating contact alarm

G	double-PI100 and pressure switch		date	03.11.2006	WIRING STANDARD CB 210 (E2)				CO2 controller and alarm		model		CB 210 (E2)		=	
	start W0644	07.12.2006	SME	edited							SME					+
			tested	VS							art.-No.		9040-0013/0015	file	56023007.PRO	page 5
state	change	date	name	norm	origin	substitute for	replaced by	wiring diagram			art.-No.		9040-0013/0015	file	56023007.PRO	from 6 pg.

The reproduction, distribution and utilization of this document as well as the communication of its contents to others without explicit authorization is prohibited. Offenders will be held liable for the payment of damages. All rights reserved in the event of a patent, utility model or design.



F	double-P1100 and pressure switch			date	03.11.2006	WIRING STANDARD CB 210 (E2)		piping supply of gas PNEUMATIC - PLAN	model		CB 210 (E2)	=	F	
	G	start W0644	07.12.2006	SME	edited				SME			+		
					tested				VS					
	state	change	date	name	norm	origin	substitute for	replaced by	wiring diagram	art.-No.	9040-0013/0015	file	56023007.PRO	page 6 from 6 pg.

1 2 3 4 5 6 7 8 9 10 11 12 13 14 15 16

A

B

C

D

E

A

B

C




D

E

F

1 2 3 4 5 6 7 8 9 10 11 12 13 14 15 16

	1	2	3	4	5	6	7	8	9	10	11	12	13	14	15	16	
A	position	marking	designation				part number				location						
	1	-1S1	rocker switch (1no)				5019-0019				1.2						
	2	-1F1	fuse semi time-lag MT 10A								1.2						
	B			fuse semi time-lag MT 10A				5006-0012				1.2					
				fuse socket FUL				5006-0038				1.2					
				screw cap FUL 5x20mm				5006-0039				1.2					
		3	-X1	net cable 230VAC								1.2					
				net cable 230VAC				5023-0002				1.2					
	C			cable connection (3 wires)				6002-0004				1.2					
		4	-1F2	temperature fuse 229°C (-10K)				5006-0037				1.2					
		5	-1Z1	capacitor 1-phase				5026-0001				1.3					
6		-X2	terminal block ledge								1.3						
D				clamped connect. gray (4L)				5024-0020				1.3					
			clamped connect. blue (4L)				5024-0021				1.3						
			earth clamp green-yellow (4L)				5024-0022				1.3						
			closing plate orange (4L)				5024-0023				1.3						
			isolated bridge gray				5024-0011				1.3						
			plastic part				5024-0010				1.3						
E	7	-1T1	power supply 85 ... 264VAC / 24VDC (1,0A)				5020-0026				1.9						
	8	-X40	cabel+bushing CO2-probe 2,50m				5023-0052				2.4						
	9	-2B1	CO2 / FPI 2 - sensor head				5002-0023				2.4						
F	10	-2N1	PCB CO2 / FPI 2 probe				5014-0063				2.6						
	11	-3B1	2x P1100 3-wire straight				5002-0043				3.2						
double-P1100 and pressure switch			date	03.11.2006	WIRING STANDARD CB 210 (E2)				BINDER				CB 210 (E2)				=
G	start W0644	07.12.2006	SME	edited													SME
			tested	VS									page 1				
state	change	date	name	norm	origin	substitute for	replaced by	production parts list				art.-No.	9040-0013/0015	file	56023007.PRO	from 2 pg.	

	1	2	3	4	5	6	7	8	9	10	11	12	13	14	15	16																																																																																
A B C D E F	position	marking	designation					part number					location																																																																																			
	12	-3B2	Pt100 angled silicone					5002-0022					3.3																																																																																			
	13	-3S1	door contact (10) 250VAC / 25W					5019-0009					3.4																																																																																			
	14	-3B3	Pt100 straight silicone					5002-0021					3.4																																																																																			
	15	-3N1	controller MB1 monitor					5014-0059					3.5																																																																																			
	16	-X60	cable + plug 2,50m (MB1)					5023-0051					3.5																																																																																			
	17	-3N2	controller MB1 E/A-board					5014-0060					3.6																																																																																			
	18	-X70	cable interface RS422					5023-0050					3.8																																																																																			
	19	-4M1	radial fan (40W) 230VAC					5013-0021					4.3																																																																																			
	20	-4K1	solid state relay (1S / 25A) 280VAC					5011-0036					4.5																																																																																			
	21	-4M2	axial fan (12W) 230VAC (CB)					5013-0009					4.5																																																																																			
	22	-4K2	solid state relay (1S / 25A) 280VAC					5011-0036					4.10																																																																																			
	23	-4K3	solid state relay (1S / 25A) 280VAC					5011-0036					4.10																																																																																			
	24	-4E1	ribbed heating 115V / 650W (CB210-E2)					5005-0138					4.10																																																																																			
	25	-4E2	ribbed heating 115V / 650W (CB210-E2)					5005-0138					4.10																																																																																			
	26	-4E3	heating-wire 230V / 80W (CB210-E2 door)					5005-0097					4.14																																																																																			
	27	-5F1	pressure switch 0,3bar					5006-0064					5.3																																																																																			
	28	-5Y1	solenoid valve 2/2 ways 0,5mm					5025-0013					5.7																																																																																			
	29	-X80	cable 3 wires to DIN bushing 6-position					5023-0075					5.11																																																																																			
	30	-X81	DIN plug straight 6-position					5024-0097					5.11																																																																																			
	The reproduction, distribution and utilization of this document as well as the communication of its contents to others without explicit authorization is prohibited. Offenders will be held liable for the payment of damages. All rights reserved in the event of the grant of a patent, utility model or design.																																																																																															
	<table border="1"> <tr> <td colspan="2">double-Pt100 and pressure switch</td> <td colspan="2">date</td> <td colspan="2">03.11.2006</td> <td colspan="5" rowspan="3"> WIRING STANDARD CB 210 (E2) </td> <td colspan="2" rowspan="2">  </td> <td colspan="2">CB 210 (E2)</td> <td colspan="2">=</td> </tr> <tr> <td colspan="2">start W0644</td> <td colspan="2">07.12.2006</td> <td colspan="2">SME</td> <td colspan="2">edited</td> <td colspan="2">SME</td> <td colspan="2">model</td> <td colspan="2">+</td> </tr> <tr> <td colspan="2"></td> <td colspan="2"></td> <td colspan="2"></td> <td colspan="2">tested</td> <td colspan="2">VS</td> <td colspan="2">art.-No.</td> <td colspan="2">9040-0013/0015</td> <td colspan="2">file</td> <td colspan="2">56023007.PRO</td> <td colspan="2">page 2</td> </tr> <tr> <td colspan="2">state</td> <td colspan="2">change</td> <td colspan="2">date</td> <td colspan="2">name</td> <td colspan="2">norm</td> <td colspan="2">origin</td> <td colspan="2">substitute for</td> <td colspan="2">replaced by</td> <td colspan="2">production parts list</td> <td colspan="2">art.-No.</td> <td colspan="2">9040-0013/0015</td> <td colspan="2">file</td> <td colspan="2">56023007.PRO</td> <td colspan="2">from 2 pg.</td> </tr> </table>																	double-Pt100 and pressure switch		date		03.11.2006		WIRING STANDARD CB 210 (E2)							CB 210 (E2)		=		start W0644		07.12.2006		SME		edited		SME		model		+								tested		VS		art.-No.		9040-0013/0015		file		56023007.PRO		page 2		state		change		date		name		norm		origin		substitute for		replaced by		production parts list		art.-No.		9040-0013/0015		file		56023007.PRO		from 2 pg.	
	double-Pt100 and pressure switch		date		03.11.2006		WIRING STANDARD CB 210 (E2)							CB 210 (E2)		=																																																																																
	start W0644		07.12.2006		SME									edited		SME		model		+																																																																												
												tested		VS		art.-No.		9040-0013/0015		file		56023007.PRO		page 2																																																																								
	state		change		date		name		norm		origin		substitute for		replaced by		production parts list		art.-No.		9040-0013/0015		file		56023007.PRO		from 2 pg.																																																																					