



DE MONTFORT  
UNIVERSITY  
LEICESTER

*ITDG*

PRACTICAL ANSWERS  
TO POVERTY

## LOW COST MEDICAL WASTE INCINERATOR



**ECHO**

**REFERENCE COPY  
PLEASE DO NOT REMOVE**

Manufacturing, Operation and  
Maintenance Instructions

## LOW-COST MEDICAL WASTE INCINERATOR



Manufacturing, Operation and  
Maintenance Instructions

*Date of issue: 19 January, 2000*

### **Contents:**

Introduction	Page 1
Construction	Page 2
Operation	Page 9
Main construction drawing	Centre pages
Appendix II – materials list	Page 11
Photographic reference	Page 12/13



## Introduction

The medical waste incinerator is a simple two-chamber natural-draught incinerator designed to be operated at temperatures of 800°C and higher. The performance of the incinerator will vary depending on the moisture content of the medical waste but a throughput of up to 15kg/hour can be achieved. The incinerator has been designed so that it can be built on site, using standard building bricks or blocks and lined with refractory bricks. All the steel components, such as the loading door, the ash removal door and air inlet apertures can be made using basic workshop equipment.

Wood, wood and dry waste soaked in kerosene or diesel is required initially to start the combustion process. Once the correct temperature is reached, the medical waste is loaded into the incinerator. Much of the medical waste will have value as a fuel and will contribute towards combustion but additional wood or kerosene may be required to ensure that adequate combustion temperatures are maintained.

The initial combustion occurs in the primary chamber and then the hot gases pass into the secondary chamber where the combustion process is completed. The two-chamber design helps to ensure that the combustion time is sufficient to destroy the products of combustion and minimise any harmful emissions.

The incinerator should be situated under a simple open-sided roofed structure, such as a lean-to, away from tall buildings and in an area free from air turbulence. Although it can be operated in the open, a roof will help to protect the incinerator from rain and provides shelter for the operator.

The incinerator is capable of incinerating most types of medical waste including textiles, plastics and packaging. It can also incinerate most types of drugs, medicines, vaccines and sharps – as long as they are mixed with other wastes. However, as grease-based products, such as ointments, creams and Vaseline create large quantities of dense black smoke when burned, they are best disposed of by other means.

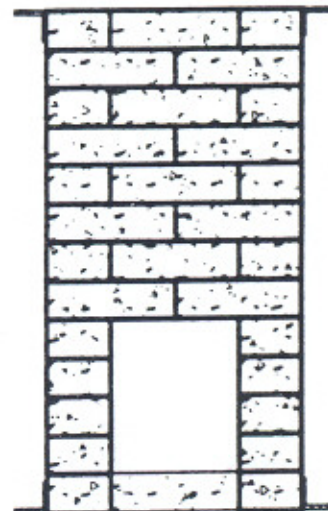
## Definitions

The fuel value is the ability of any material to contribute to sustained combustion. A material with a high fuel value will contribute to the combustion process helping to maintain high temperatures. Materials with a low fuel value will result in poor combustion and may, depending on the amount of other high value fuel available in the incinerator, lower the combustion temperatures or even cause combustion to cease.

**Stack** is another name for a chimney.

**Support fuel** is the fuel used to start the incinerator and, when necessary, to provide additional combustible material to ensure effective incineration.

**Refractory bricks** (firebricks) are made from refractory clay which can withstand high temperatures. Depending on the manufacturer, they can be available in a range of sizes and grades.





## CONSTRUCTION

### Introduction

The following construction notes should be used in conjunction with the main drawing of the incinerator (see appendix 1). These notes are based on experience gained during the design and development of the prototype in the UK and the building and operating of incinerators at four hospitals in developing countries. Two of these incinerators are located in Nepal (one using either wood or kerosene and the other kerosene only), one is in Zimbabwe (using wood) and one in South Africa (using diesel).

Although these notes describe proven techniques for the successful construction of the incinerator, it should not be assumed that this is the only way of building one. Minor modifications to material sizes, types or specification may be required to suit local conditions. With the exception of the refractory bricks, all the other materials specified in the materials list (see appendix 2) could be replaced with others of different sizes or specification to suit local availability. For instance, the common building bricks used for the outer wall could be replaced with cement bricks (as in Zimbabwe) or blocks, or where an angle iron of  $50 \times 50 \times 3$  is specified,  $40 \times 40 \times 3$  could be used instead. The actual size of the incinerator is dependent on the size of the bricks used and because the standard size of

brick can be different from country to country – and even from region to region – slight differences in size of the incinerator may be expected. These variations should not effect the performance of the incinerator.

### General description of construction

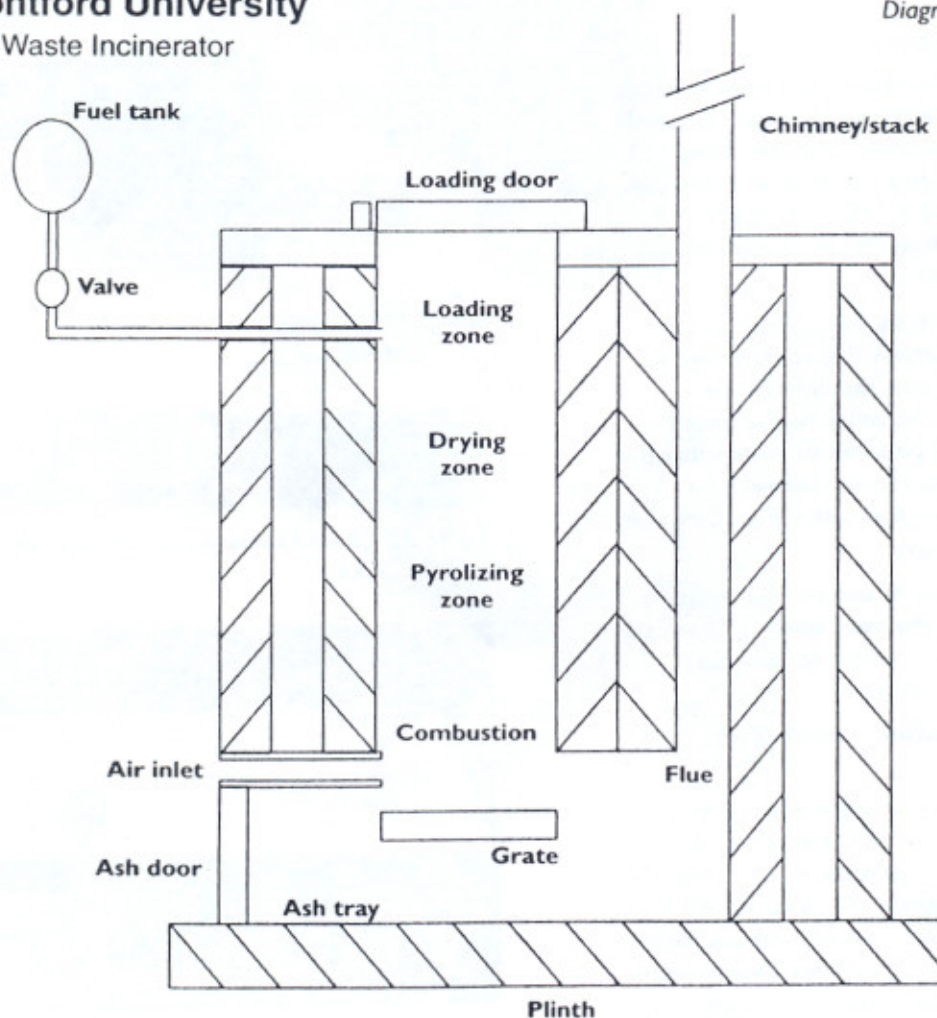
The incinerator – see sketch below – is a simple construction using firebricks, standard building bricks and steel (angle, sheet and tubing). It consists of two chambers – the primary combustion chamber (load chamber) and the secondary chamber (flue). They are built from firebricks and are located within an outer wall constructed from standard building bricks. An air gap, approximately the width of one standard building brick, separates the chambers from the outer wall.

A top plate, made from sheet steel, has openings in it for the loading door and stack (chimney) fittings. The stack is fitted over the top of the incinerator and clamped in position by an angle iron frame and angle iron strips fitted to the outer wall. The loading door, made from either channel-section or angle iron, fits within a door-frame welded to the top plate. It is hinged at the front so that the door opens towards the operator. The door frame is then filled with sand to form a seal.

Also welded to the top plate are a number of lengths of angle iron that help to stiffen the top plate and form a box around the stack opening. The stack, which is

### De Montford University Medical Waste Incinerator

Diagram of incinerator areas



I.A.DUIT718  
2/3/2000



made from sheet steel, fits over a spigot-plate and is supported by a simple angle iron frame bolted to the top-plate clamping frame.

## Guidance notes

### Foundation

The foundations should be slightly larger than the incinerator and a guide to the actual size can be gained from laying out a course of standard bricks – six long and four wide – to represent the outer wall of the incinerator. A gap should be left between each brick to allow for the thickness of the mortar. The length and width should be measured and then the foundations should be built one brick wider all round and 150mm deep. A standard concrete mix (3:2:1) of ballast, sand and cement should be used (see Figure 1).



Figure 1 – Foundation

### Combustion chamber (drawing item 2)

The combustion chamber is constructed from firebricks, without any mortar, and is clamped together to provide strength and reduce the possibility of bricks being pushed out of alignment during incineration. A standard fire brick approximately 225 × 115 × 76mm (9 × 4.5 × 3 inches) and capable of withstanding temperatures of at least 1300°C should be used.

The combustion chamber is four (4) bricks long by two (2) bricks wide and thirteen (13) courses high (see drawing). The first course forms the floor of the combustion chamber while the other twelve form the walls. Particular care should be taken to ensure that the front opening (Fig 2) and the channel between the combustion chamber and the flue outlet (Fig 3) are built correctly (see design drawings).

The ash door (drawing item 3) and air inlet tubes (drawing item 4) must fit in the front opening. These are sealed into position using fire cement (or fire clay) during the building of the outer wall.

### Clamp frame for combustion chamber

(drawing item 22)

The clamp frame consists of four angle iron uprights bolted together using a number of horizontal tie bars. The uprights should be slightly shorter than the outside height of the combustion chamber (i.e. 5 to 10mm). The tie bars can be made in a number of ways to suit locally available materials and workshop facilities. One method (shown in Figure 4) is to make tie bars from angle iron



Figure 2 – Front opening



Figure 3 – Channel opening between combustion chamber and flue outlet.

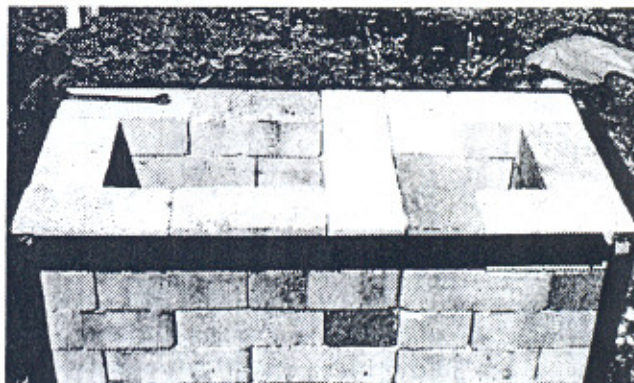


Figure 4 – Tie-bar arrangement



with one end welded horizontally to an upright and a short length of 12mm steel pipe welded to the other end. The opposite upright has short lengths of steel pipe welded to it in alignment with those welded to the tie bars. The clamp frame can then be fitted to the combustion chamber and tightened around the bricks using nuts and bolts through the water tubes.

Another method (see Figure 5) is to weld short lengths of water tube horizontally to the uprights and join them together using tie bars made from water tube or round steel bar, with bolts welded at either end.

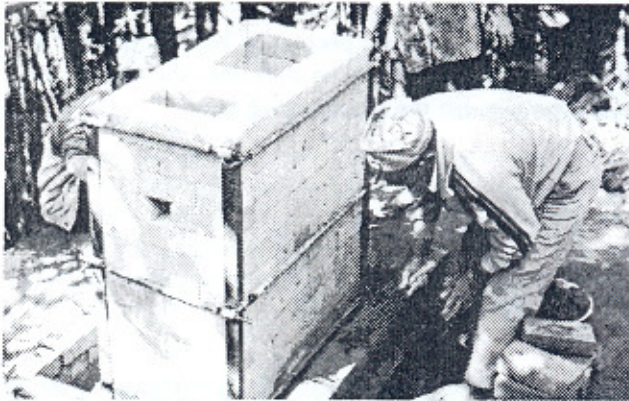


Figure 5 – Alternative tie-bar arrangement

#### Air inlets (drawing item 4)

The air inlet can be made from square, rectangular or round steel pipe. The air inlet cross-sectional area should be approximately 4800mm<sup>2</sup>. The inlet can be made from pipe or tube, or from a number of smaller tubes welded together (see Figure 6). The air inlet tubes should be supported on a square section steel box, the box extending from the inner wall to the outer face of the outer wall (see Figure 6). The ash door is hinged to this box section.

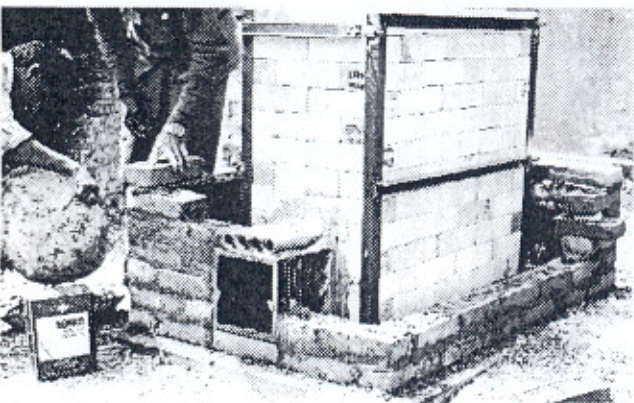


Figure 6 – Air-inlet pipes and ash door

#### Outer wall (drawing item 5)

Using standard bricks and mortar build up the outer wall until it is level with, or slightly higher (5mm maximum) than the top of the combustion chamber. The outer wall should be six bricks long and four wide, and between 12 or 13 courses high depending on the depth of the brick used and thickness of the mortar. It is

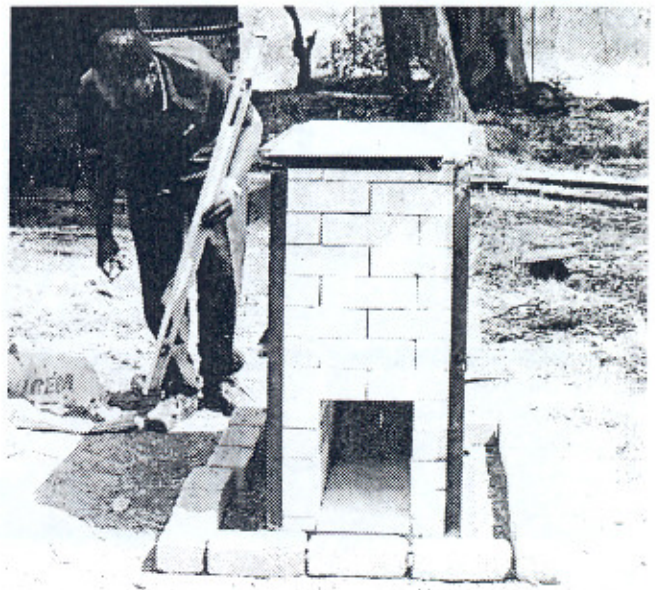


Figure 7 – Laying out the outer wall allowing for air gap

important that there is an air gap between the combustion chamber wall and the outer wall. This gap provides insulation between the inner and outer walls, so ensuring that the outer wall never becomes too hot. It should be approximately the width of one standard brick all round (see Figure 7).

While building up the outer wall, the ash door and air inlet tubes should be fitted. Where they pass into the combustion chamber they should be fixed in position using fire cement. Where they are located in the outer wall, the ash door and air tubes should be fixed using ordinary mortar.

The air tubes should be long enough to be flush with the brick work in the outer wall and should only protrude slightly into the combustion chamber.

#### Top framework (drawing item 6)

The top frame (see below) clamps the top plate in position. It is made from angle iron with sheet steel gusset plates (drawing item 7) welded across the corners to provide increased strength. Six vertical hangers are welded to the frame, two on each of the longer sides and one on each of the shorter sides. These hangers are bolted to an angle iron rail which is fixed to the side of the outer wall using screws and wall plugs (see Figure 8).

#### Top plate (drawing item 8)

The top plate is made from flat sheet steel. It should be cut slightly smaller than the outer wall (approximately 10mm all round) with two cut-outs corresponding to and slightly larger (again 10mm all round) than the openings for the combustion chamber and chimney. It should be bedded onto a thin layer of fire cement on the inner chamber and ordinary cement on the outer wall, sufficient cement being used to ensure good sealing all round. The plate should then be clamped into position using the top framework described opposite (see Figure 9). The top plate should NOT be welded to the top frame, so avoiding undue stresses in the frame when the top plate heats up.



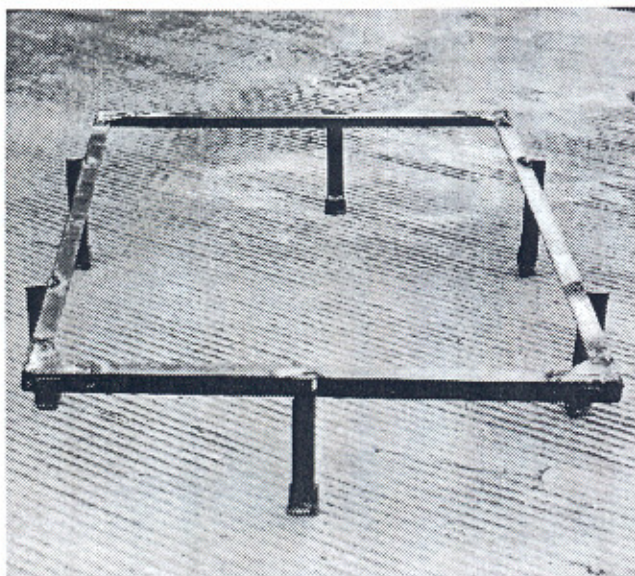


Figure 8 – Top framework

The loading door frame, flue exit frame and strengthening bars should be welded in place once the top plate is clamped into position to minimise any buckling that may occur during the welding process.

However, the complete top frame can be fabricated elsewhere and clamped into position later although, in this case, care should be taken to ensure that the top plate remains flat. After clamping the top frame into position, checks should be made at the openings to the combustion chamber and chimney to ensure that the fire cement and ordinary cement makes a good seal – additional cement being used as required.

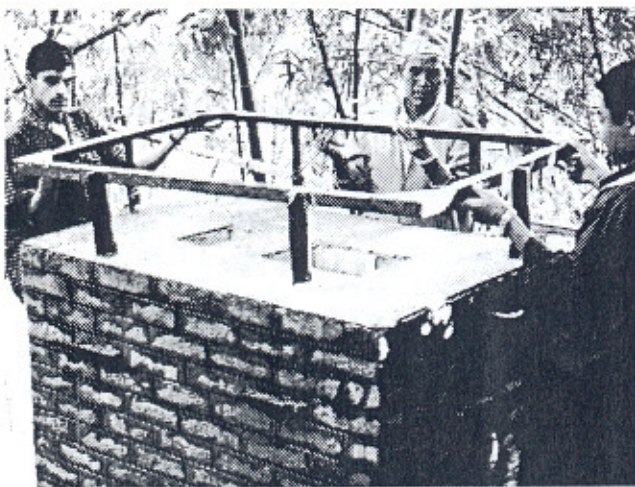


Figure 9 – Fitting the top framework

The loading-door frame (drawing item 16) is made from channel section and should be fully welded to the top plate. The frame should be made larger than the opening in the top plate so that it can be fully welded on the inside and outside edges. The flue exit-frame is constructed from angle iron and fully welded to the top plate on the outside only. The stack spigot (drawing item 18) will fit inside the box and should be clamped in position using two lengths of angle iron bolted to the box. This enables the spigot plate to be removed and replaced as necessary.

### Loading door (drawing items 9 to 15)

The loading door is made from channel-section frame (drawing item 15), such that its outside edges fit inside the loading door-frame. It is covered with a fully-welded sheet steel plate. Two angle-iron hinge support brackets (drawing item 11) are welded on top of the door. A baffle plate (drawing item 13) is suspended beneath the door so that it hangs into the combustion chamber by approximately 100mm when the door is closed. This baffle plate will help prevent the door and door handle becoming too hot during operation. The sheet steel cover should be welded in position on top of the door.

The door should be hinged at the front end of the incinerator so that it opens towards the operator (see Figure 10). This provides protection to the operator in case blow-back occurs when air enters the combustion chamber through the open loading door.

The hinge is made from a short length of steel pipe welded to the underside of each of the support brackets and two more pieces welded to the loading door frame. A length of steel bar is used as the hinge pivot bar. The door handle can be made from steel bar and welded in position once the door has been fitted.



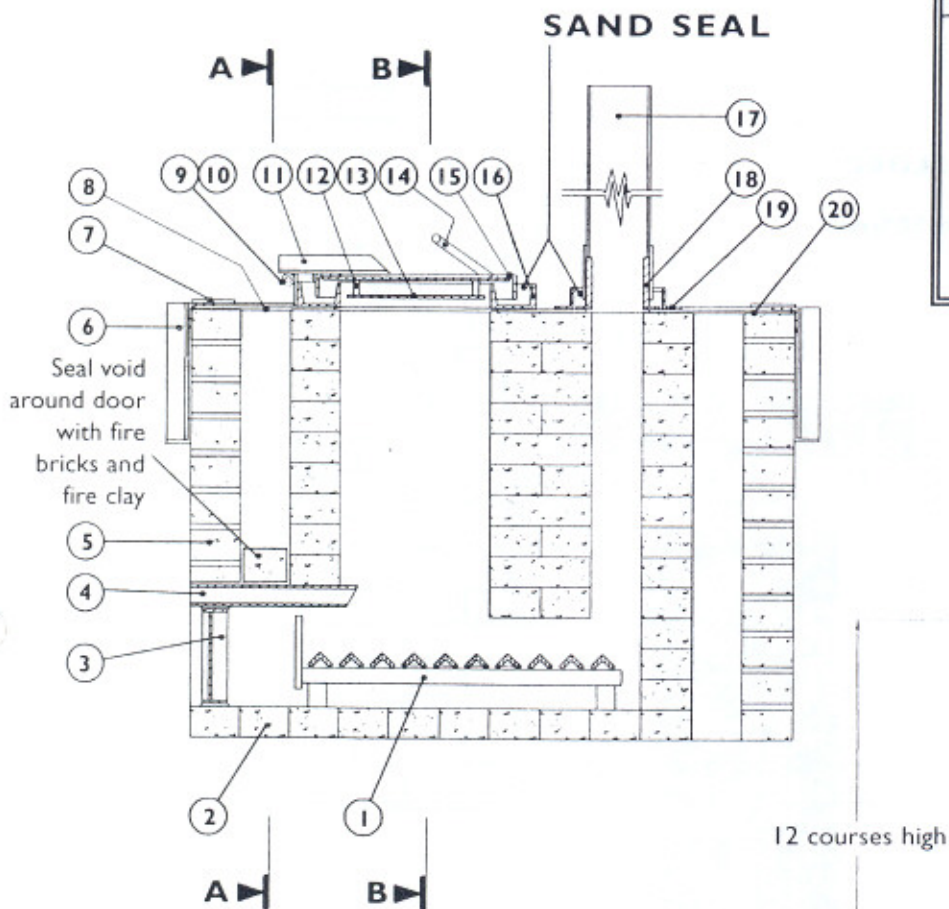
Figure 10 – Loading door operation

### Stack (drawing item 17)

The stack has 150mm inside diameter and stands at 4m high. It can be made from rolled sheet steel or from a piece of steel or cast iron pipe. If it is being made from sheet steel, the stack can be constructed in sections to suit the capacity of the rolling machine and/or the size of sheet being used. The sections can then be welded together using either a collar welded to one end of each section or bolted flanges. Regardless of the techniques used to make the stack, it is useful to have a removable bottom section of about 1m long.



## Main construction drawing

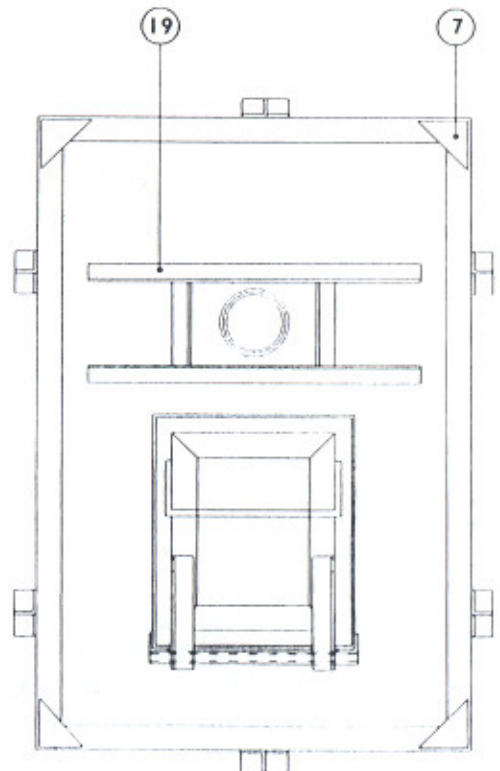
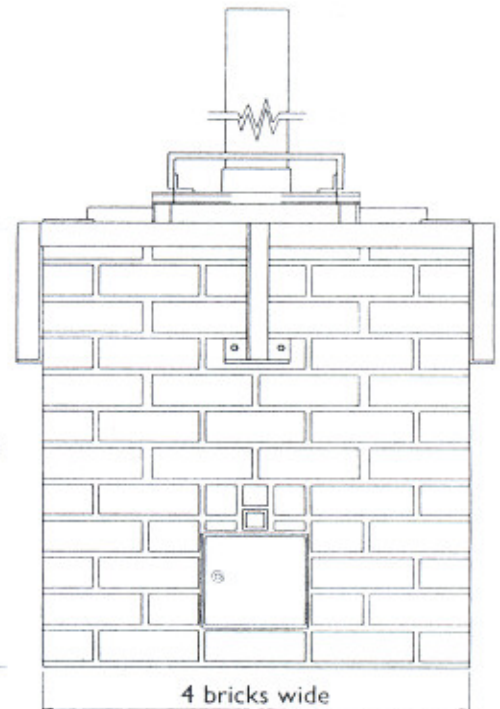


### Notes:

1. Design based on brick size of 230 x 75 x 100.
2. Quantities WILL VARY depending on actual dimensions.
3. Mortar mix 4 parts sand to 1 part cement.
4. Horizontal joints in OUTER skin to be adjusted to give level top with inside.
5. Fire clay to be used as sealant.
6. Sand seals on loading door and chimney to be WELL maintained.

ITEM	DWG NO	DESCRIPTION	MATERIAL	QTY
24		Building sand		100kg
23		Cement		75kg
22		Fire brick clamping frame - loc nuts & bolts (M12)	40x40x5 RSA	11m
21		M612 x 501g screws c/w wall plugs		
20		Fire clay seal	Fire clay	5kg
19		Flue exit frame	40x40x5 RSA	2.5m
18		Chimney spigot	150mm dia tube	100mm
17		Chimney pipe	1.2mm thk MS sheet	4
16		Loading door seal frame	70x40x5 RSC	2m
15		Loading door frame	4x40x5 RSA	2m
14		Handle	13 dia MS bar x 1000	1
13		Baffle plate	2mm thk MS plate	1
12		Baffle plate support	13 dia MS bar x 50	4
11		Hinge support bracket	30x30x5 RSA x 250	2
10		Pivot bar	13 Dia MS bar	500mm
9		Loading door hinge	20 O/D x 15 I/D tube	500mm
8		Top plate	1000x1450x2mm 1k MS Sh	1
7		Gusset plate	150x150x3 P1 diagonal cut	2
6		Incinerator top framework	40x40x5 RSA	
5		Common bricks - outer skin	Clay	220
4		Air inlet pipe	70x40x5 RHS	500mm
3		210x210 suet door sealed with fire clay to brickwork	Al or MS	1
2		Fire bricks	Refractory	140
1	INC/02/01	Ash grate	30x30x5 RSA	5m

<b>Title Medical waste incinerator</b>			
Drn by K D R Seare	Date 26/10/98	Scale NTS	Drg No INC/01/1
<b>De Montford University - Lincoln</b> Innovative Technology Centre			
This research/study was funded by the Department for International Development of the United Kingdom. However, the Department for International Development can accept no responsibility for any information provided or views expressed.			

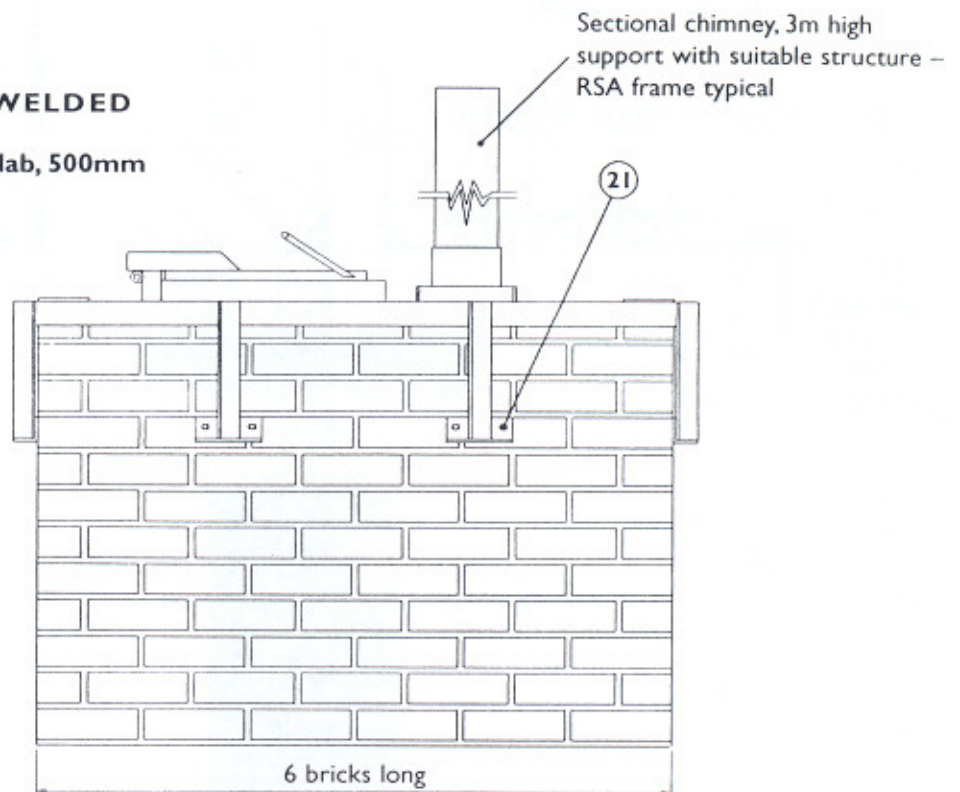




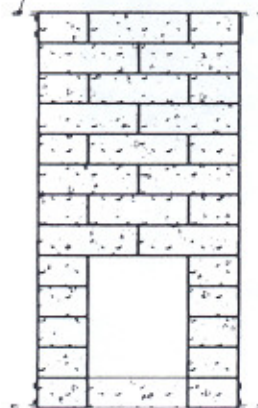
DO NOT SCALE - IF IN DOUBT - ASK!

**ALL FRAME WORK TO BE WELDED**

Foundations: 150 thick concrete slab, 500mm clearance all round

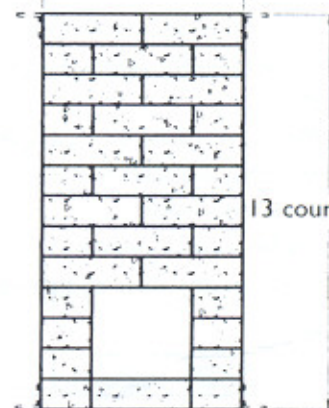


Outline of upper and lower framework



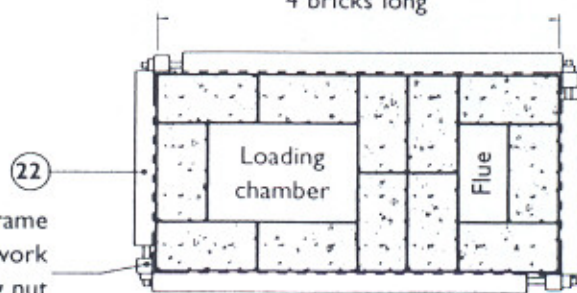
Section on AA  
(Fire brick opening)

2 bricks wide



Section on BB  
(Load chamber to flue opening)

4 bricks long



Bolt welded to angle clamping frame  
Bolt slides through tube welded to framework  
Tension by tightening nut  
Typical for upper and lower frame

View on arrow C - top of fire bricks  
(Clamping framework for fire bricks shown)



The stack is positioned over the spigot, on the spigot plate and clamped into the stack box. A simple support frame is required to hold the stack in place.

This can be constructed from angle iron as shown in Figure (see Figure 11). A rain cap should be fitted on top of the stack and a steel-mesh guard (approximately 1m high) placed around the stack to prevent people from touching it as it heats up. The flue-exit frame should then be filled with sand which provides an effective gas seal.

#### **Grate (drawing item 1)**

A simple grate can be made from angle iron or steel bar or a mixture of both. The grate should be long enough to extend across the whole of the combustion chamber and it should be easy to remove either through the ash door or the loading door.

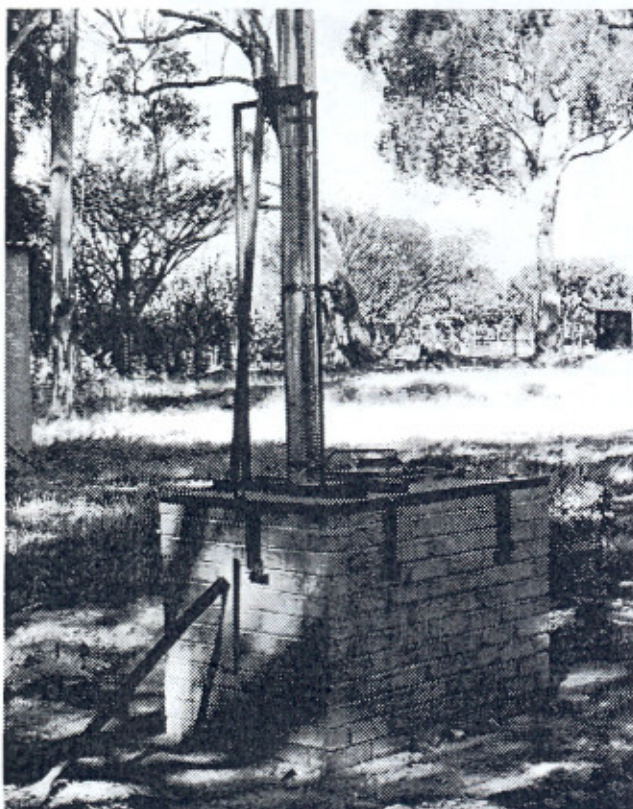


Figure 11 – Stack support frame

#### **Kerosene/Diesel tank and feed pipe. (kerosene fired version only)**

A fuel tank with a capacity of between 2 and 5 litres should be fitted to the front of the incinerator (as shown in Figure 12) approximately 500mm above the top of the incinerator, so as to provide a head for the fuel.

The feed pipe enters the incinerator combustion chamber at one brick course below the top and should be sealed in position using fire cement. The tank should be fitted with an on/off valve or tap to control the flow of kerosene. In addition, a simple push button valve with a spring return can also be added to give better control over the flow of fuel. The button valve will also ensure that kerosene does not flow freely into the incinerator if the main flow-control valve is left open by mistake.

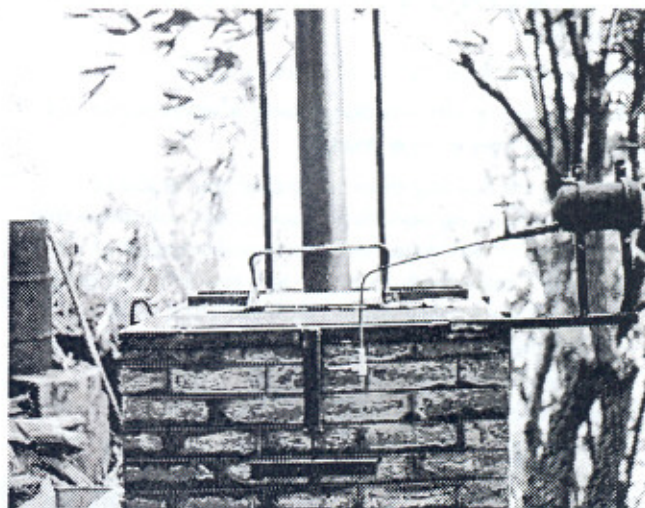


Figure 12 – Two litre fuel tank fitted to top framework



## OPERATING THE INCINERATOR SAFETY

*Please read the following safety notes carefully:*

**When opening the loading door always wear eye protection and a face mask.**

- Opening the loading door on either the wood or kerosene fired version during operation will mean that additional air will enter the combustion chamber. This may cause blow-back to occur and the flame to flare up out of the loading door. The blow-back does not last long but it could cause injury to anyone standing too close to the incinerator.
- Particular care should be taken when using kerosene as atomised vaporised fuel may be present at the top of the combustion chamber which could ignite vigorously.
- The operator should open the door while standing at the front of the incinerator. The loading door is designed so that it hinges from the front of the incinerator and opens towards the operator. This provides the operator with some protection from any blow-back and keeps him/her away from the opening to the combustion chamber.
- The operator should wait a few moments to allow any blow-back to die down before loading waste materials into the incinerator.

### Small explosions

- Some waste materials such as ampoules and glass bottles containing liquid vaccines and medicines may explode during incineration causing glass and other waste materials to be blown into the atmosphere. The operator should ensure that eye protection and a face mask is worn when opening the loading door or when visually checking the combustion process through the air inlet or when removing the ash door while the incinerator is in use.

### Handling waste

- Always wear heavy-duty gloves and apron while handling medical waste. If the waste is bagged hold the bag by the top and away from your body. Drop the bag through the loading door opening and if it gets stuck use a stick to push the bag into the combustion chamber (see Figure 13).
- If the waste is loose, use a shovel to load it into the combustion chamber.

### Removing ash and other solids from the combustion chamber

- Never handle the ash or other waste materials by hand. Use a stick or scraper to pull the solids out through the ash door and into a dustpan or box.
- Do not remove the ash or other waste materials from the combustion chamber until they have cooled down. This will take about five hours. If the incinerator is in operation on a daily basis then the ashes and other waste material can be removed the following day as part of the preparation for operation.
- Dispose of the ash and other waste materials carefully by burying or placing in a skip for disposal by local authority or other authorised disposal company.

## General operating notes

The following notes are intended to give the operator a basic understanding of how to operate the incinerator. Optimum operation of this incinerator requires frequent attention to ensure that it performs effectively. It will take time for the operator to become familiar with the operation.



*Figure 13 – Placing waste into the incinerator. Note that the operator is using a stick to push the waste down and is wearing gloves and eye protection*

### Waste management

Materials with high fuel values such as plastics, paper, card and dry textile will help maintain high incineration temperature. If possible a good mix of waste materials should be added with each batch. This can best be achieved by having the various types of waste material loaded into separate bags at source i.e. the wards and laboratories, and clearly labelled. It is not recommended that the operator sorts and then mixes the waste prior to incineration as this is potentially hazardous.

The operator can then judge when to place which type of waste into the incinerator at any particular time. If possible some plastic materials should be added with each batch of waste as this burns at high temperatures. However, care and judgement will be needed as too much plastic will create dense dark smoke. Wet kitchen waste should not be placed in the incinerator.

### Operating temperatures

- The incinerator does not have a temperature gauge and so adequate operating temperatures have to be judged by the operator based on experience. A visual guide is to look through the air inlet and at the colour of the smoke from the stack. If a good strong flame can be seen then the temperature should be more than 800°C at this point and so will be adequate for good incineration. If the smoke is dark grey or black then poor combustion is occurring and the temperature will be below that required.



### Starting and Operating the Wood Fuelled Version

- Open the loading door and ash door and remove any ash or other materials from the fire box, ensuring that the grate is clean and the entrance to the flue is not blocked.
- Before lighting the incinerator, prepare the fire wood, ensuring that it is dry and chopped or cut into short lengths (that fit horizontally through the loading door) and not more than 75mm (3") in section. If the wood has a high moisture content (i.e. above 15%) then it will be difficult to get the incinerator up to the operating temperature.
- Place paper on the grate and cover with dry kindling and small pieces of wood and/or dry textiles.
- Light the paper through the ash door and NOT through the loading door. (This prevents the operator being burnt if paper and kindling material flare up unexpectedly).
- Once the fire is established and burning well, start adding the fire wood in small amounts.
- The loading door can be closed after about 5 minutes from lighting and once the fire is being drawn from the primary combustion chamber into the secondary chamber and up the stack.
- ash door can be closed once the fire is well established. A well established fire will roar and will be audible through the air inlet tubes. Practice will enable the operator to judge when the fire is established.
- Fire wood and/or dry waste is added at intervals until the incinerator is operating at the right temperature. The operating temperature will be achieved between half and one hour from lighting, depending on the ambient temperature, moisture content of the wood and the type of wood being used (i.e. hard, soft etc.)
- Once up to operating temperature, start to add the general waste material on small batches at regular intervals. The level of material in the incinerator should be such that the incinerator is always above half full.
- If the waste is predominately unwanted drugs, straw or wood may be placed in the incinerator before the drugs to hold the boxes in position for a longer period in order to prevent pills falling through the incinerator without burning.
- Sharps, including hypodermics, should be mixed with other waste to prevent them falling through the incinerator without being destroyed.
- If the waste material has a high moisture content or has a low fuel value, wood can be added to help maintain the correct operating temperature.
- The grate and flue entry should be checked every 15 minutes and raked clear of any obstruction. This is to ensure that the airways are kept clear.
- At the end of the operating session and all the waste has been placed in the incinerator, add more wood to ensure that any waste residue has been completely burned.

### Starting and Operating the Kerosene Fuelled Version

- Open the loading door and ash door and remove any

ash or other materials from the fire box, ensuring that the grate is clean and the entrance to the flue is not blocked.

- Place paper on the grate and cover with dry kindling and small pieces of wood and/or dry textiles.
- Light the paper through the ash door and NOT through the loading door. (This prevents the operator being burnt if paper and kindling material flare up unexpectedly).
- Once the fire is established and burning well, start adding more card, paper and/or dry waste and kerosene until the incinerator is up to the operating temperature. This will probably take about 1/2 an hour.
- The loading door can be closed after about 5 minutes from lighting and once the fire is being drawn from the primary combustion chamber into the secondary chamber and up the stack.
- The ash door can be closed once the fire is well established. A well established fire will roar and will be audible through the air inlet tubes. Practice will enable the operator to judge when the fire is established.
- Once up to operating temperature, start to add the general waste material in small batches at regular intervals. The level of material in the incinerator should be such that the incinerator is always above half full.
- If the waste is predominately unwanted drugs, straw may be placed in the incinerator before the drugs to hold the boxes in position for a longer period in order to prevent pills falling through the incinerator without burning.
- Sharps, including hypodermics, should be mixed with other waste to prevent them falling through the incinerator without being destroyed.
- If the waste material has a high moisture content or has a low fuel value, kerosene can be added to help maintain the correct operating temperature.
- The grate and flue entry should be checked every 15 minutes and raked clear of any obstruction. This is to ensure that the airways are kept clear.
- At the end of the operating session and all the waste has been placed in the incinerator, add more paper, card and kerosene to ensure that any waste residue has been completely burned.

**Note:** If the incinerator is in an enclosed space, place kerosene/diesel soaked paper/rag directly under the flue and dry material in the combustion chamber. Then, with the loading door closed light the incinerator from beneath the grate. This prevents fumes from entering the enclosure.



## Appendix 11

### Materials list: medical waste incinerator

Item	Description	Size	Qty
1	Fire bricks	230 × 116 × 76mm	156
2	Standard building bricks	230 × 116 × 76mm	220
3	Cement	75 kg	75kg
4	Ballast	250kg (approximate)	
5	Sand	200kg (approximate)	300kg
6	Fire cement (1300°C +)	25kg	25kg
7	U section (mild steel)	75 × 50 × 3mm	4 meters
8	Rectangular section (mild steel)	75 × 40 × 3mm wall thickness	3 meters
9	Angle section (mild steel)	50 × 50 × 3mm thick	30 meters
10	Water tube (mild steel)	12mm inside diameter	3 meters
11	Flat sheet (mild steel)	2400 × 1200 × 2mm	1 sheets
13	Flat sheet (mild steel)	2400 × 1200 × 1.2mm	2 sheets
13	Bolts	10mm × 75mm long	24
14	Bolts	8mm × 50mm long	24
15	Nuts	10mm	24
16	Nuts	8mm	24
17	Washers	10mm diameter	24
18	Washers	8mm diameter	24
19	Screws	No. 8 × 50mm long	20
20	Welding rods	Mild steel	60

#### Note:

- the fire bricks and standard bricks should be the same size if possible,
- it is not necessary for the steel section to be exactly the size as stated for example angle iron 50 × 50 × 3mm would be an alternative for 40 × 40 × 3mm.



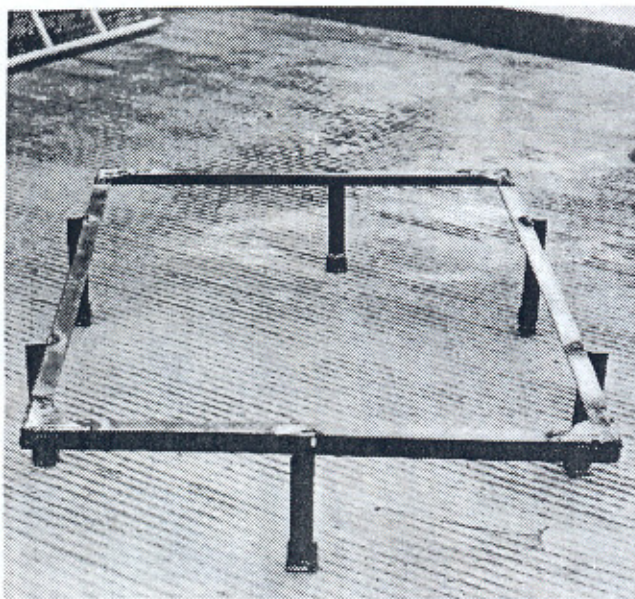


Figure 8 – Top framework

page 5

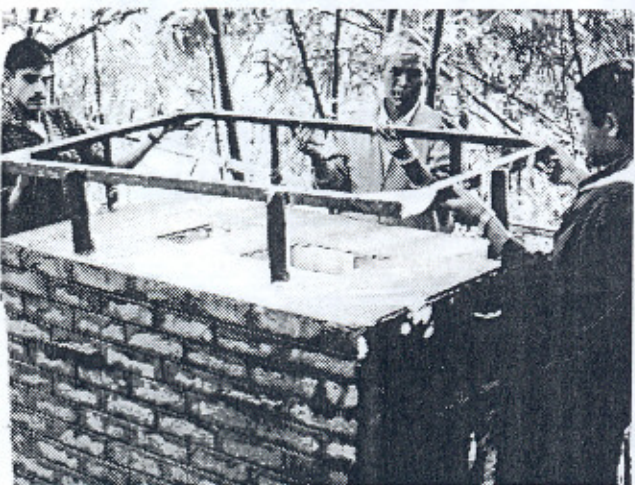


Figure 9 – Fitting the top framework

page 5



Figure 10 – Loading door operation

page 5

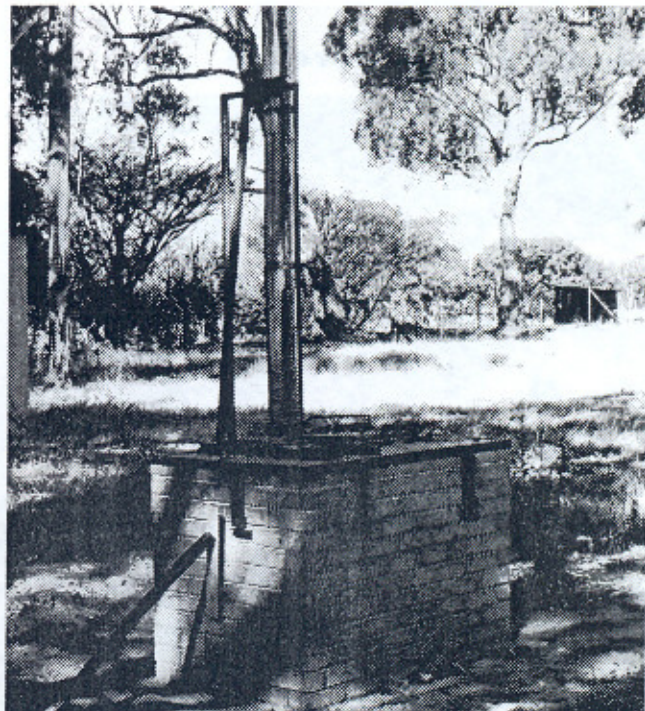


Figure 11 – Stack support frame

page 8

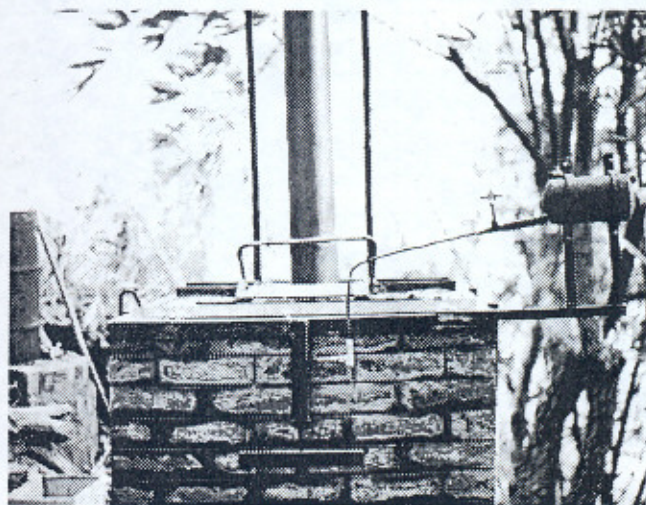


Figure 12 – Two litre fuel tank fitted to top framework

page 8



Figure 13 – Placing waste into the incinerator

page 9





## Further information

In the first instance, for further information on the construction and operation of the incinerator, or to pass your experiences to the development team, please contact either: Intermediate Technology's Technical Enquiry Service at:

Intermediate Technology  
Schumacher Centre for Technology and Development  
Bourton Hall  
Bourton-on-Dunsmore  
Rugby  
CV23 9QZ United Kingdom  
Tel: +44 (0)1788 661100  
Fax: +44 (0)1788 661101  
Email: [infoserv@itdg.org.uk](mailto:infoserv@itdg.org.uk)

or

Innovative Technology Group  
De Montfort University  
SERC  
The Gateway  
LEICESTER  
LE1 9BH United Kingdom  
Tel: (0116) 257 7698  
Fax: (0116) 257 7287  
Email: [djpicken@dmu.ac.uk](mailto:djpicken@dmu.ac.uk)

*The incinerator described was developed by the Innovative Technology Group at De Montfort University under the direction of Professor D J Picken.*

The text and photographs used in the preparation of this Technical Brief were provided by Andrew Russell, Project Engineer for this project.

This research/study was funded by the Department for International Development (DFID) of the United Kingdom. However DFID can accept no responsibility for any information provided or views expressed.

Intermediate Technology Development Group Ltd, Company Reg No 871954, England, Charity No 242257

EW 2835

free .