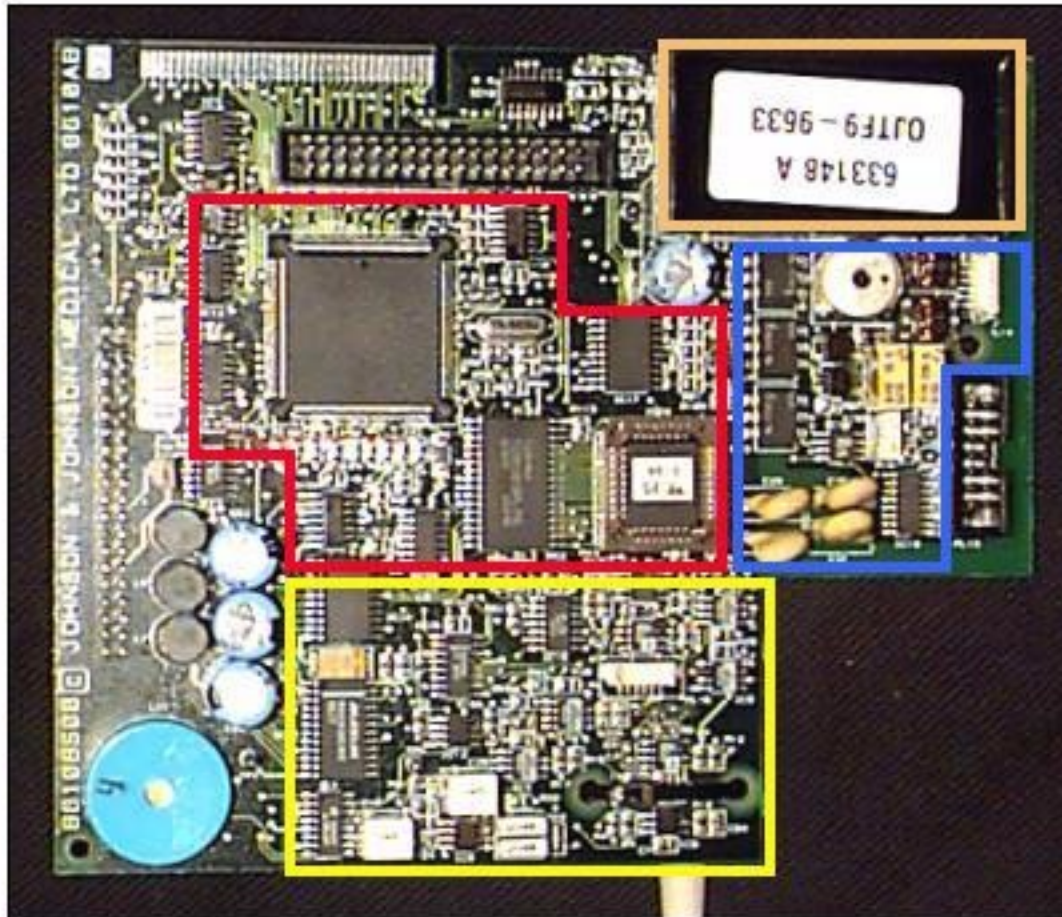


Dinamap Compact



Main Board 8610AB

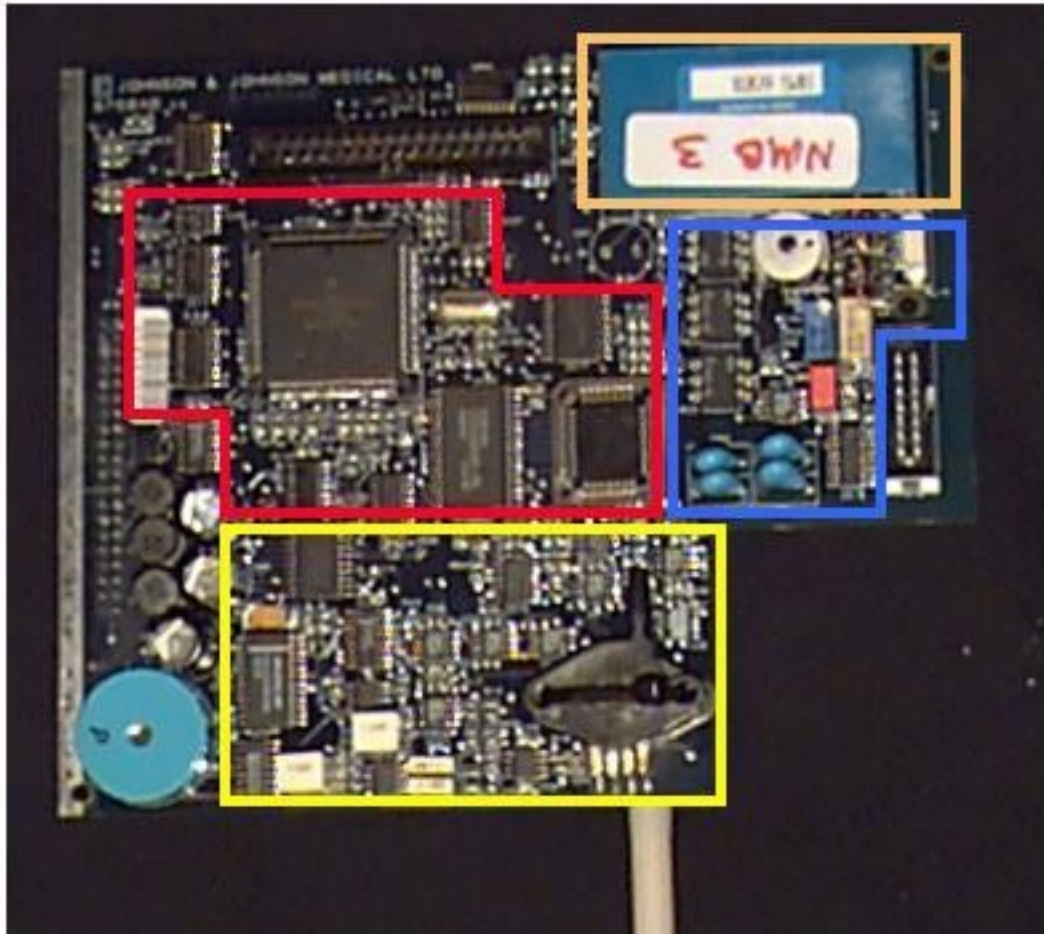
Old Style Rev 2



- ✦ Red - 68302 8 bit Processor and Memory
- ✦ Blue - Temperature measurement, with isolation barrier
- ✦ Yellow - NIBP measurement
- ✦ Orange - Isolated power supply

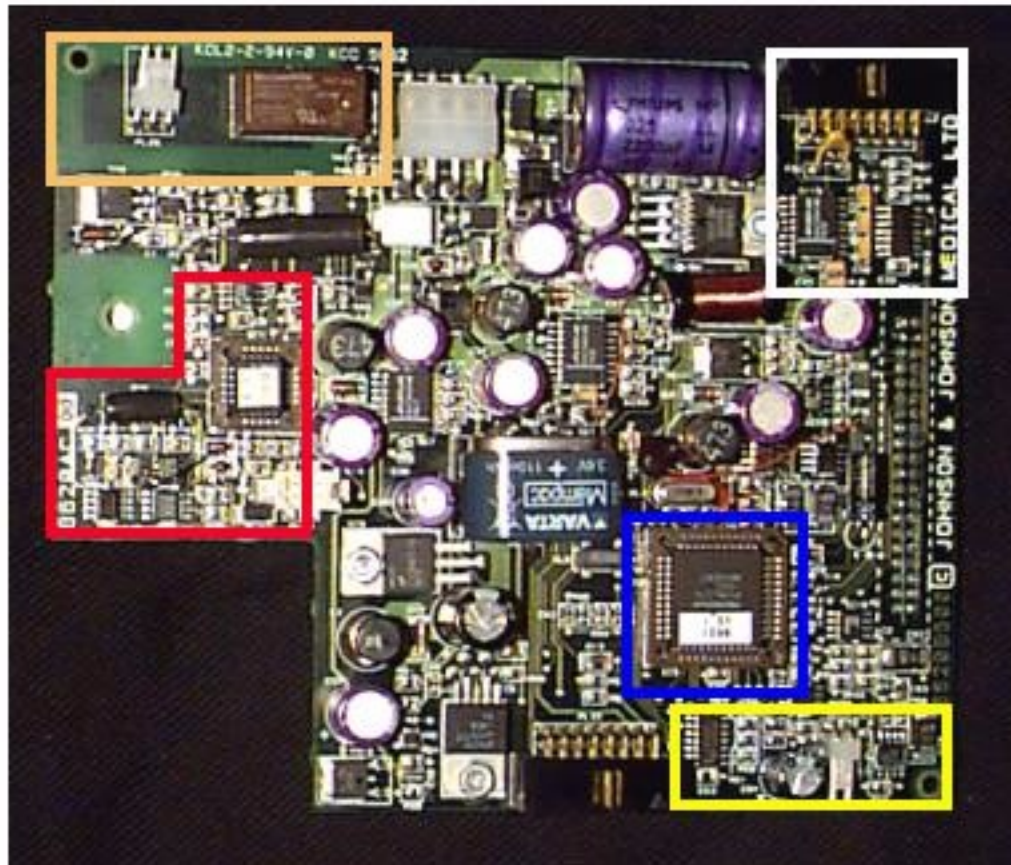
Main Board 8760AB

New Style Rev 4



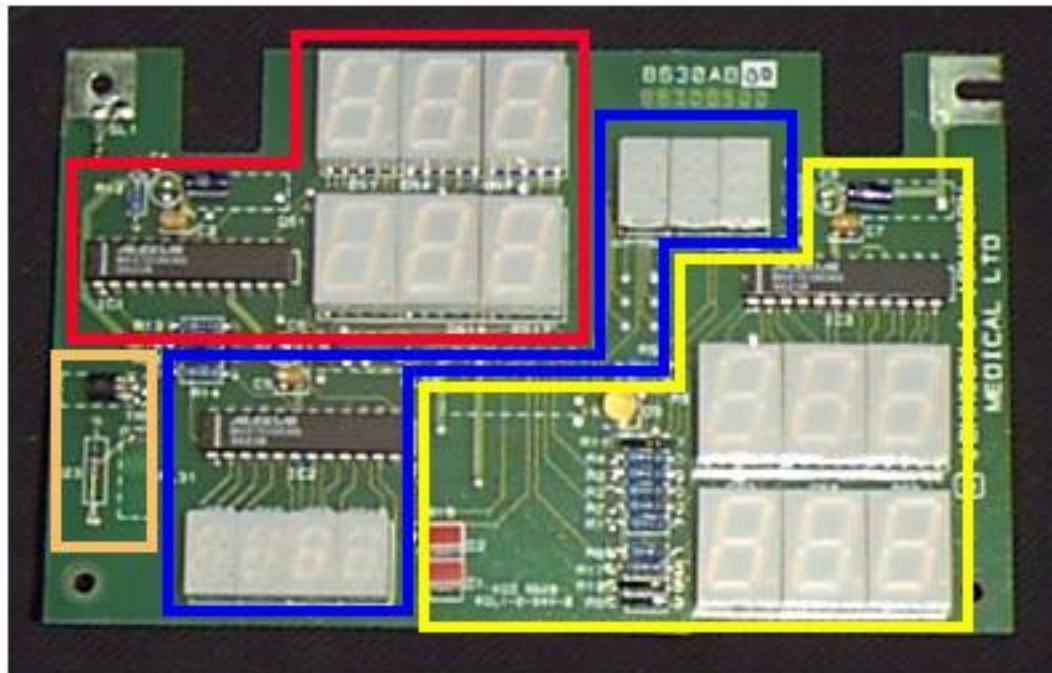
- ✦ Red - 68302 8 bit Processor and Memory
- ✦ Blue - Temperature measurement, with isolation barrier
- ✦ Yellow - NIBP measurement
- ✦ Orange - Isolated power supply

PSU Board 8620AB



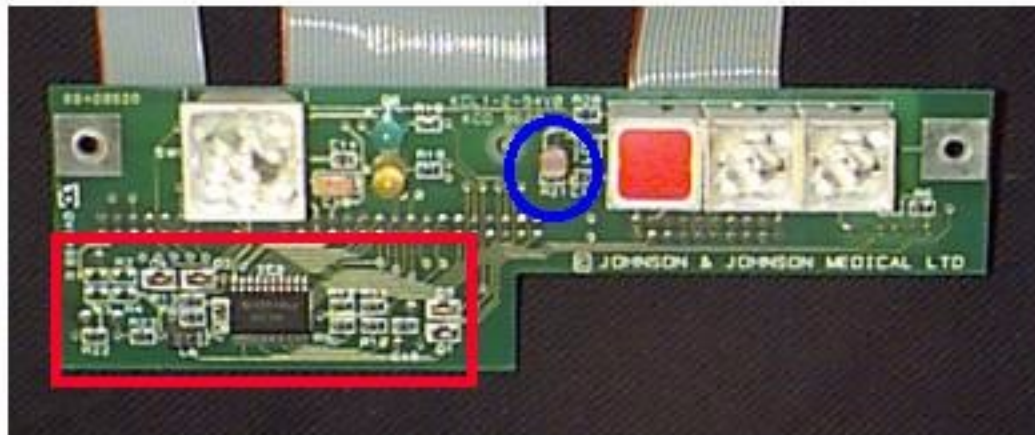
- ♦ Red - NIBP
Pneumatic control
- ♦ Blue - PIC
- ♦ Yellow - Audio
generation
- ♦ Orange - Remote
Alarm, with
isolation barrier
- ♦ White - RS232
interface

Display Board 8630AB

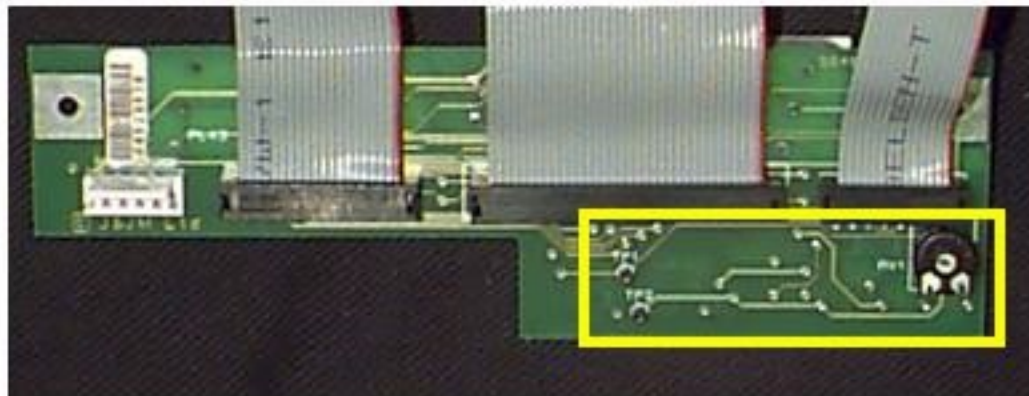


- ✦ Red - Systolic and Diastolic (IC1)
- ✦ Blue - MAP and Temperature (IC2)
- ✦ Yellow - BPM, SpO2 and discrete LEDs (IC3)
- ✦ Orange - LCD backlight switch

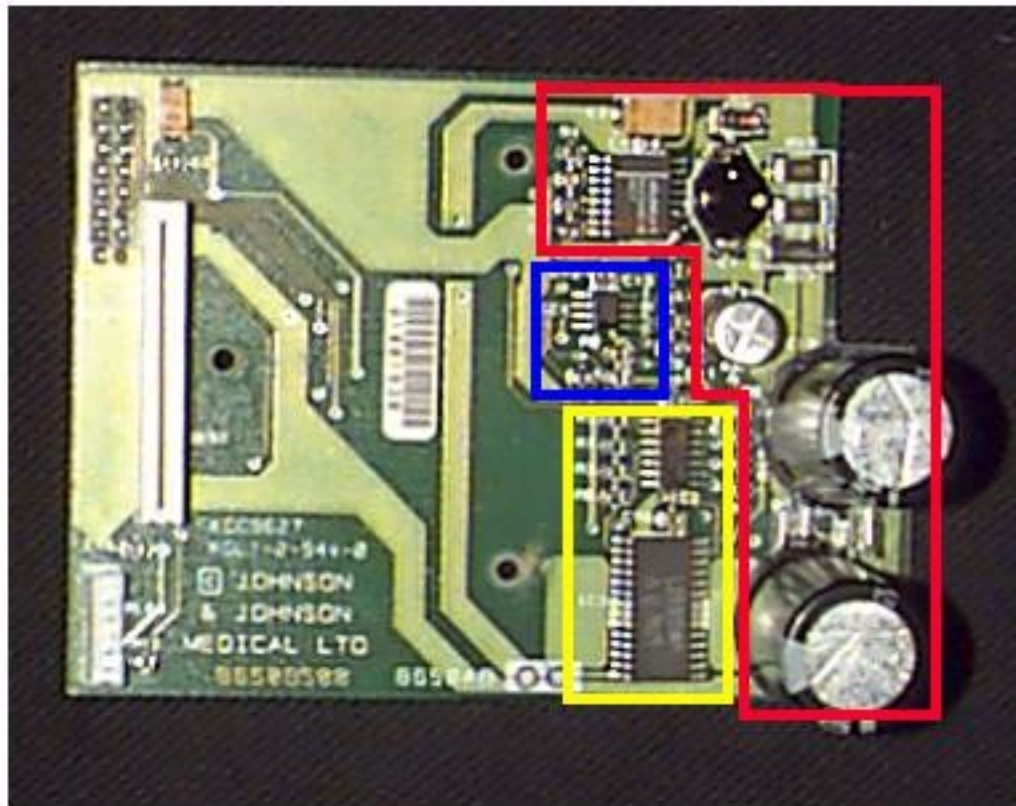
Switch Board 8640AB



- ✦ Red - 8 bit switch data latch
- ✦ Blue - Ambient light detector
- ✦ Yellow - LCD contrast adjustment

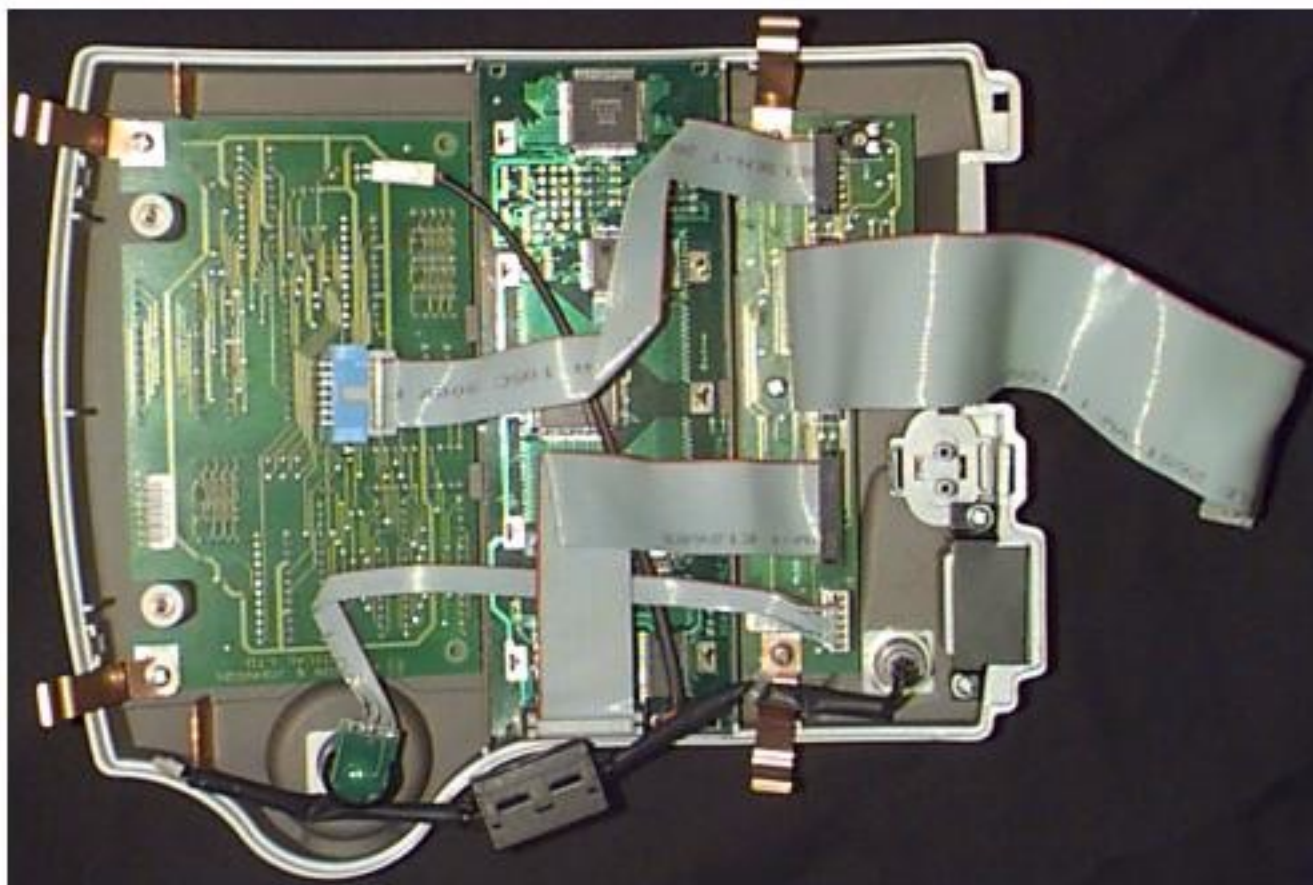


Printer Board 8650AB



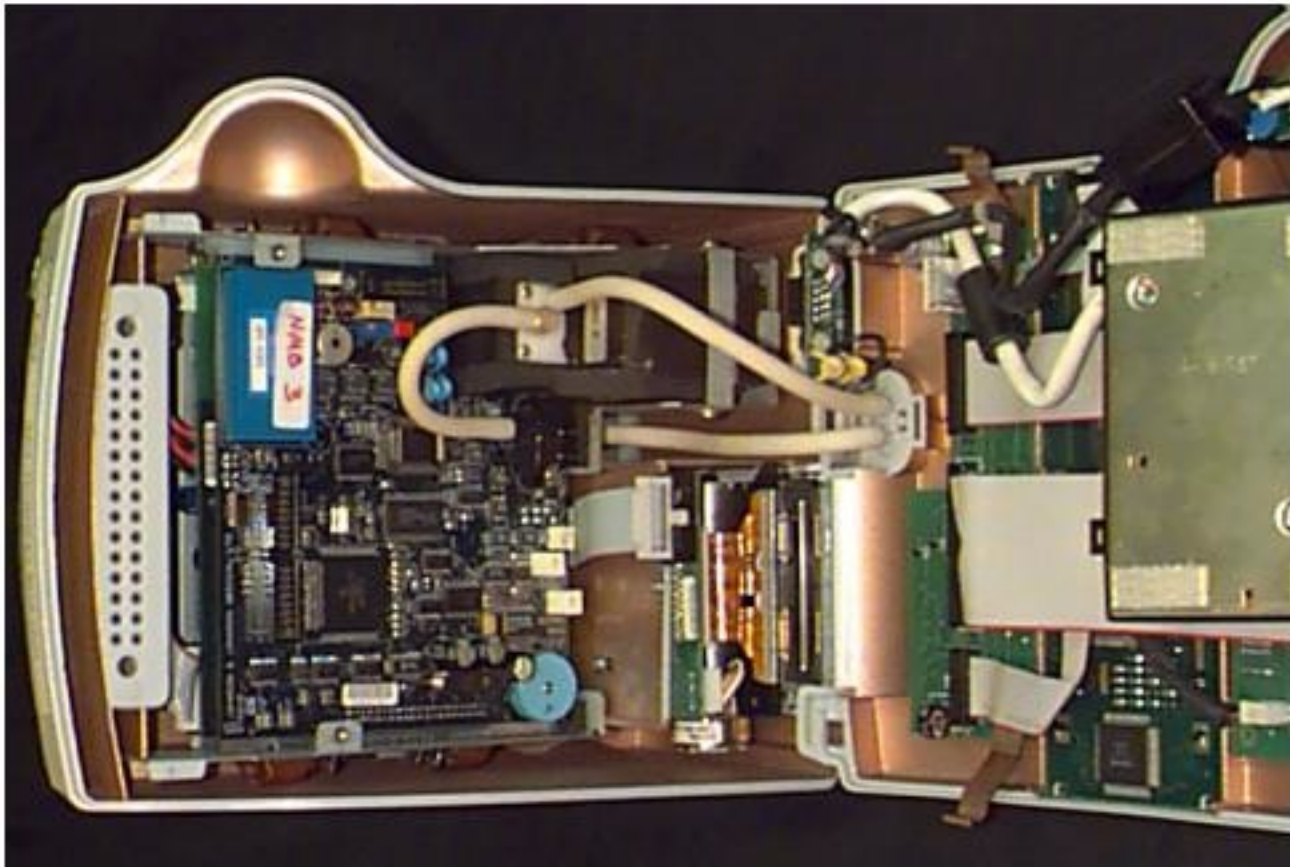
- ✦ Red - Print head power supply (+VP)
- ✦ Blue - Print head timing
- ✦ Yellow - Paper advance controller

Front Assembly



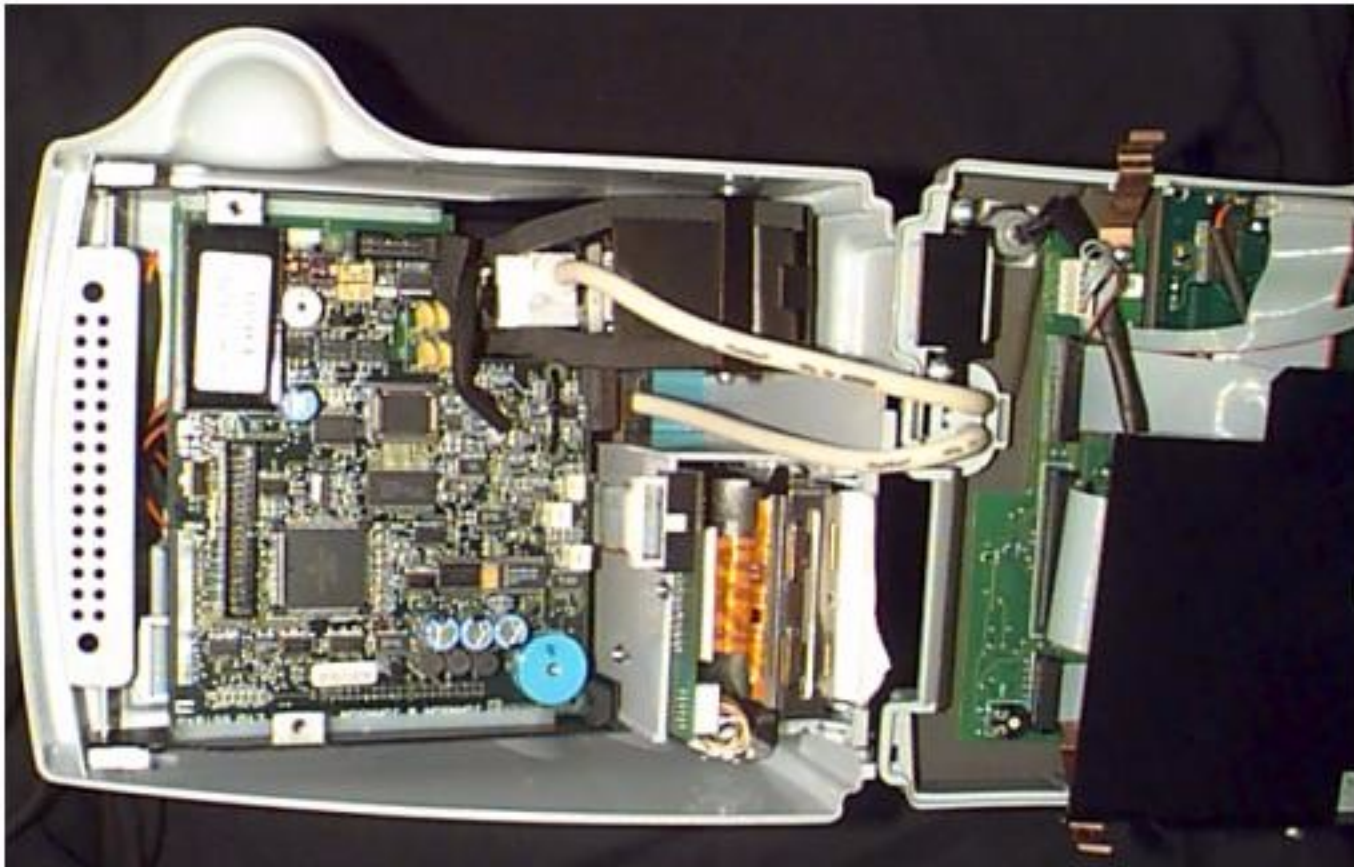
Rear Assembly

New Style Rev 4

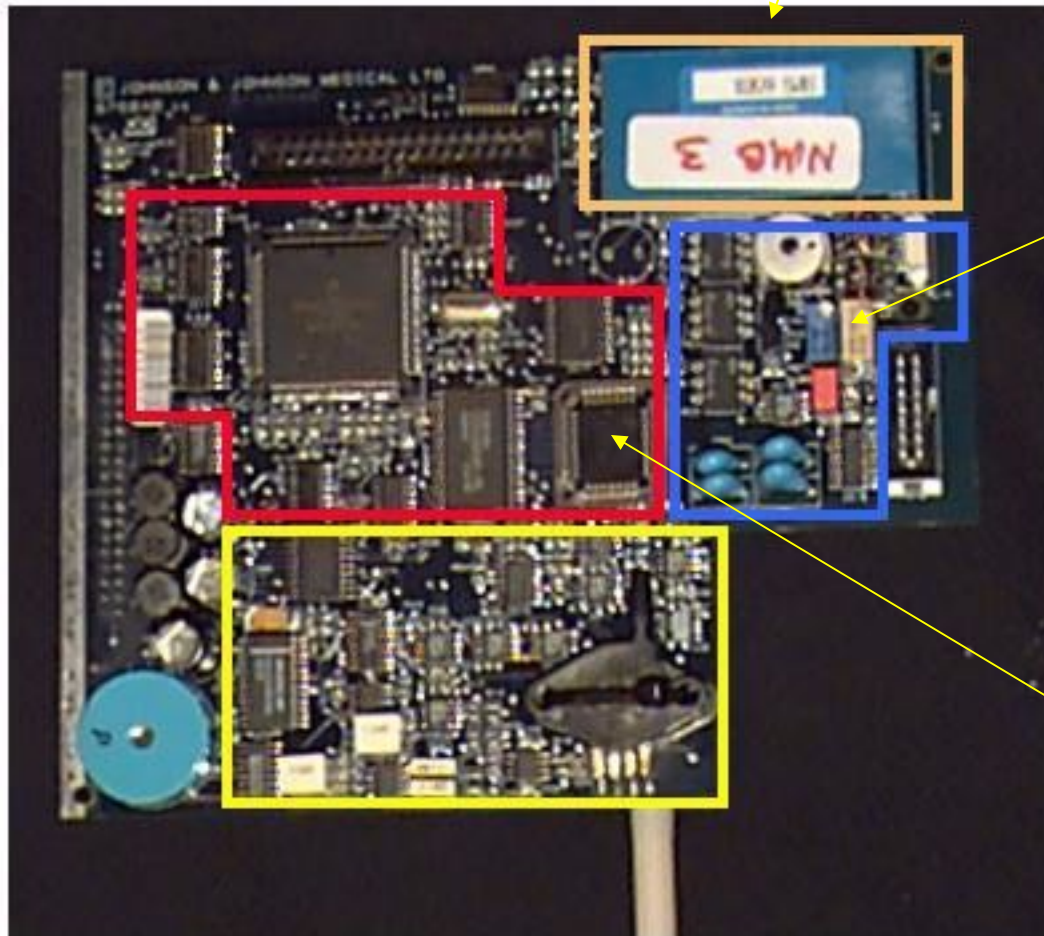


Rear Assembly

Old Style Rev 2



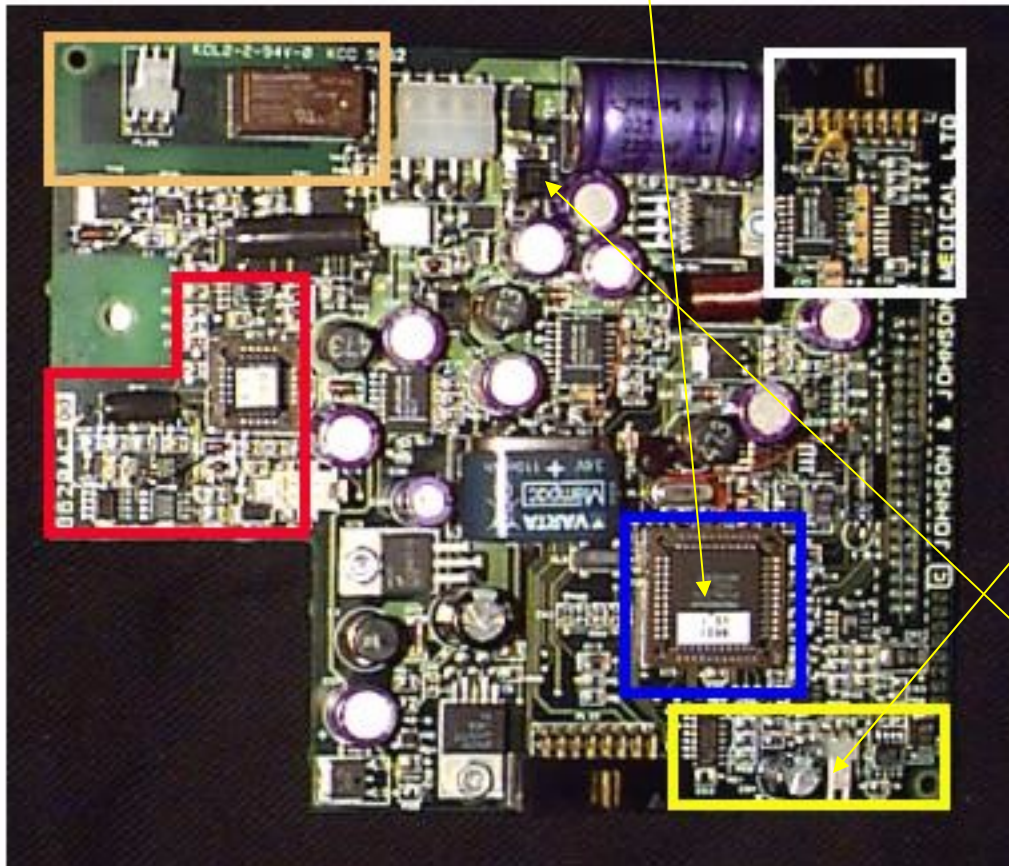
DC-DC Converter, Usually displays Temperature and SpO2 errors



Left Pot is used for calibrating the Temperature on 98 and the right hand side is for Plug

Operating software held in eeprom

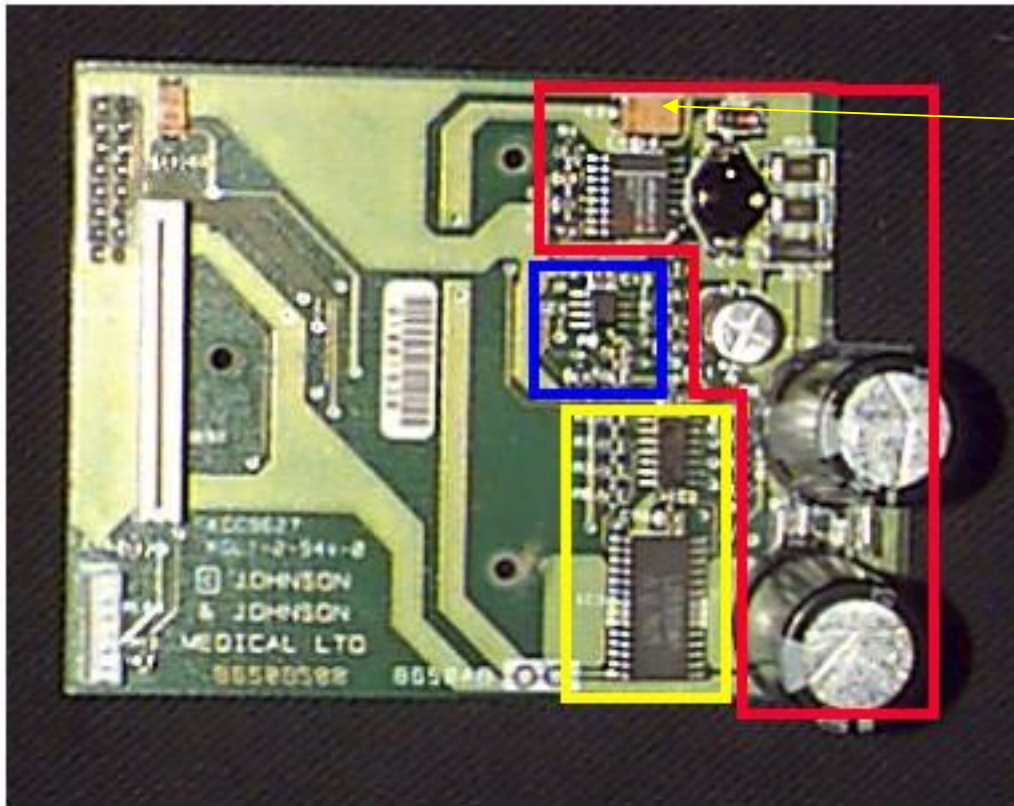
PIC software must be 4.1 or greater to
update software to 4.7 or above



Speaker
Connector may
need swapping
from old board
onto its
replacement

**Common failure on
this board, CSR-1.
Unit works on
battery, but not on
mains power.**

Printer Board 8650AB



This Capacitor can burn out and cause the unit not to power on.

When swapping LCD, backlight cable may need to be swapped over to the new unit

