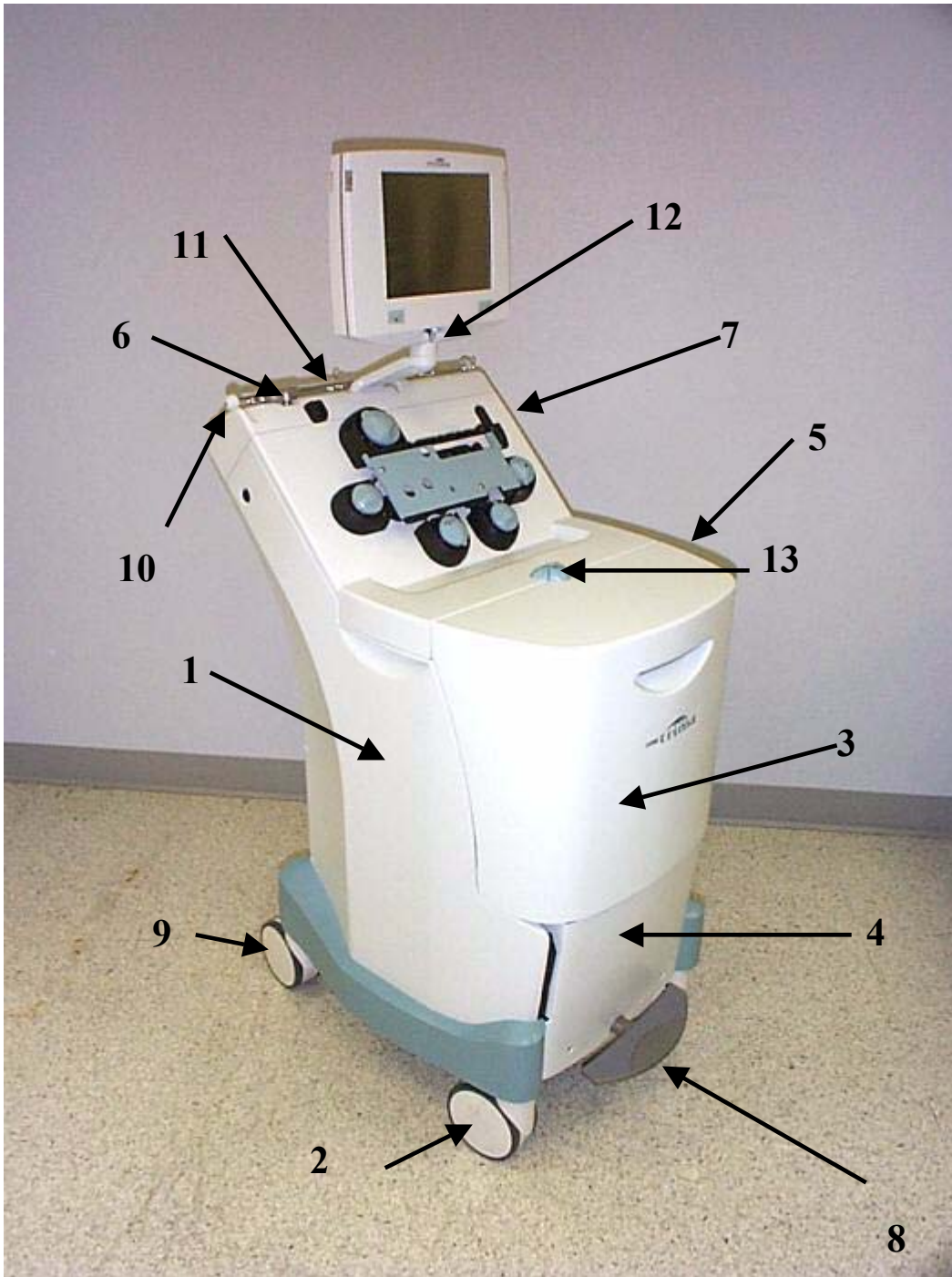

ILLUSTRATED PARTS

The illustrated part figures and tables are separated into the following sections:

- Frame Assembly(all four side panel assemblies, IV pole, Power Switch, s, Front Door Assembly, AC cord, Circuit Breaker)
- Display Group (CCAs', Speaker, Touch Screen CCA)
- Pump Panel Group (Pumps, Valves, RBC detector, Sensors, Linear Actuator, Cartridge Sensor)
- Centrifuge Compartment Group (Arm, Filler, Filler Latch, Leak Detector, Shrouds, Geartrain, Door lock Solenoid Assembly)
- Electronic Box Group (CCA's, Hard drive, Power Supply, Fans)
- Centrifuge Motor Area Group (Motor, Fan, Leak Detector CCA)
- Appendix A, optional equipment for languages, tools, manuals, equipment and supplies.
- Appendix B, spare parts listed in numerical order.
- Appendix C, recommended spare part list.

Note: Spare Part Numbers are subject to change. Check with your local warehouse for part availability.

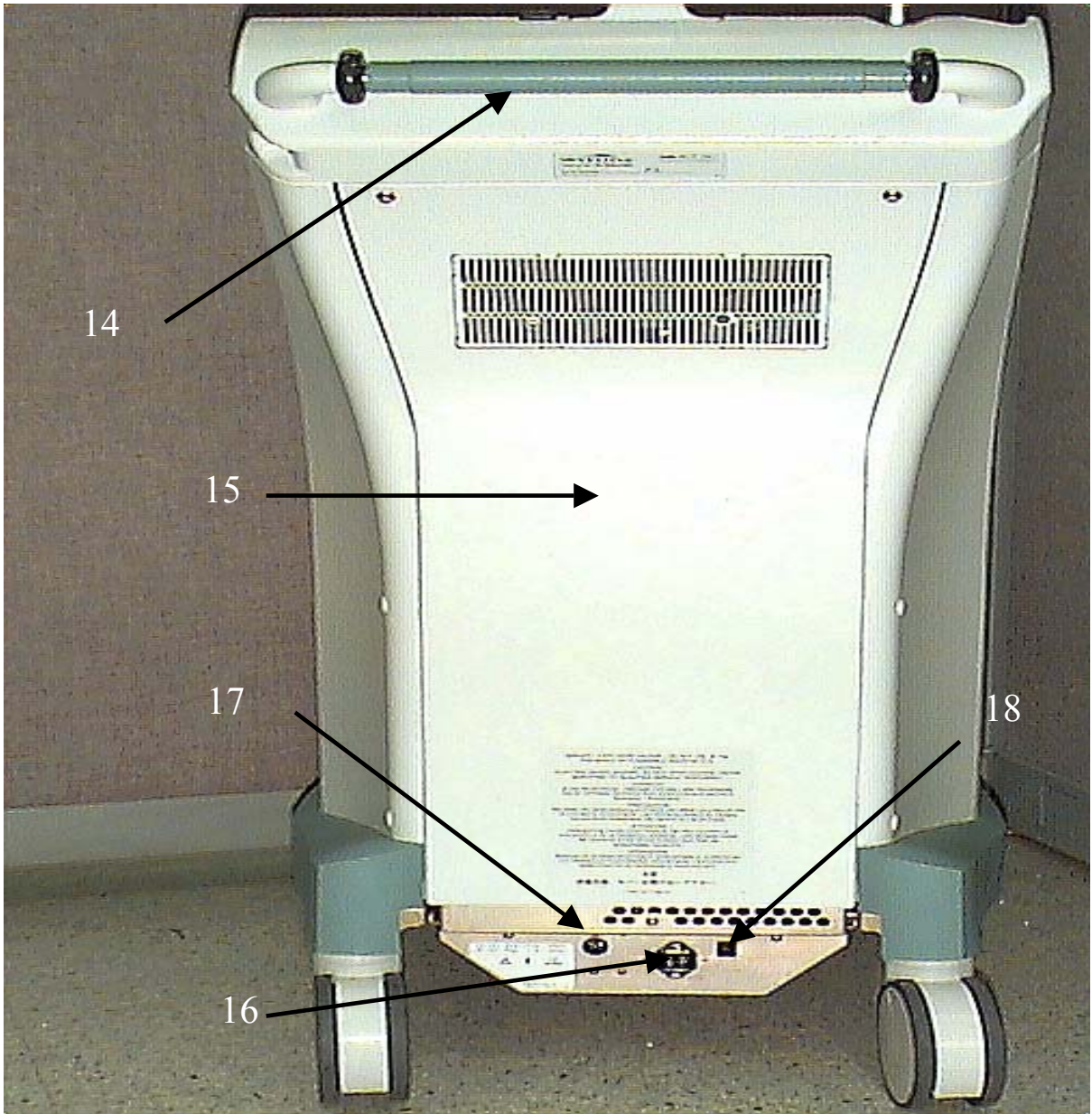
Frame Assembly



Frame Assembly

ITEM NO.	PART NO.	DESCRIPTION	QUANTITY
1	704043-000	Left Side Panel Assembly, S/N < T560	1
	704228-000	Left Side Panel Assembly, S/N \geq 560	1
2	704129-000	Front Caster	1
3	704044-000	Front Door Assembly, S/N < T560	1
	704220-000	Front Door Assembly, S/N \geq T560	1
4	704045-000	Lower Panel Assembly, S/N < T560	1
	704221-000	Lower Panel Assembly, S/N \geq T560	1
5	704046-000	Right Side Panel Assembly, S/N < T560	1
	704229-000	Right Side Panel Assembly, PNL ASSY., PWR Switch, S/N \geq T560	1
6	704047-000	IV Pole	1
7	704048-000	Power Switch (not shown)	1
8	704033-000	Pedal	1
	704192-000	External Pedal Shaft	1
9	704128-000	Rear Caster	1
10	704094-000	End Cap, IV Pole	2
11	704095-000	Gasket, Display Arm, for S/N \leq 1T00135	1
	704101-000	Gasket, Display Arm, for S/N >1T00135 up to 1T00560	1
12	704130-200	Bumper, Display Housing	56
13	704107-000	Loop Dampeners, Centrifuge	1 set

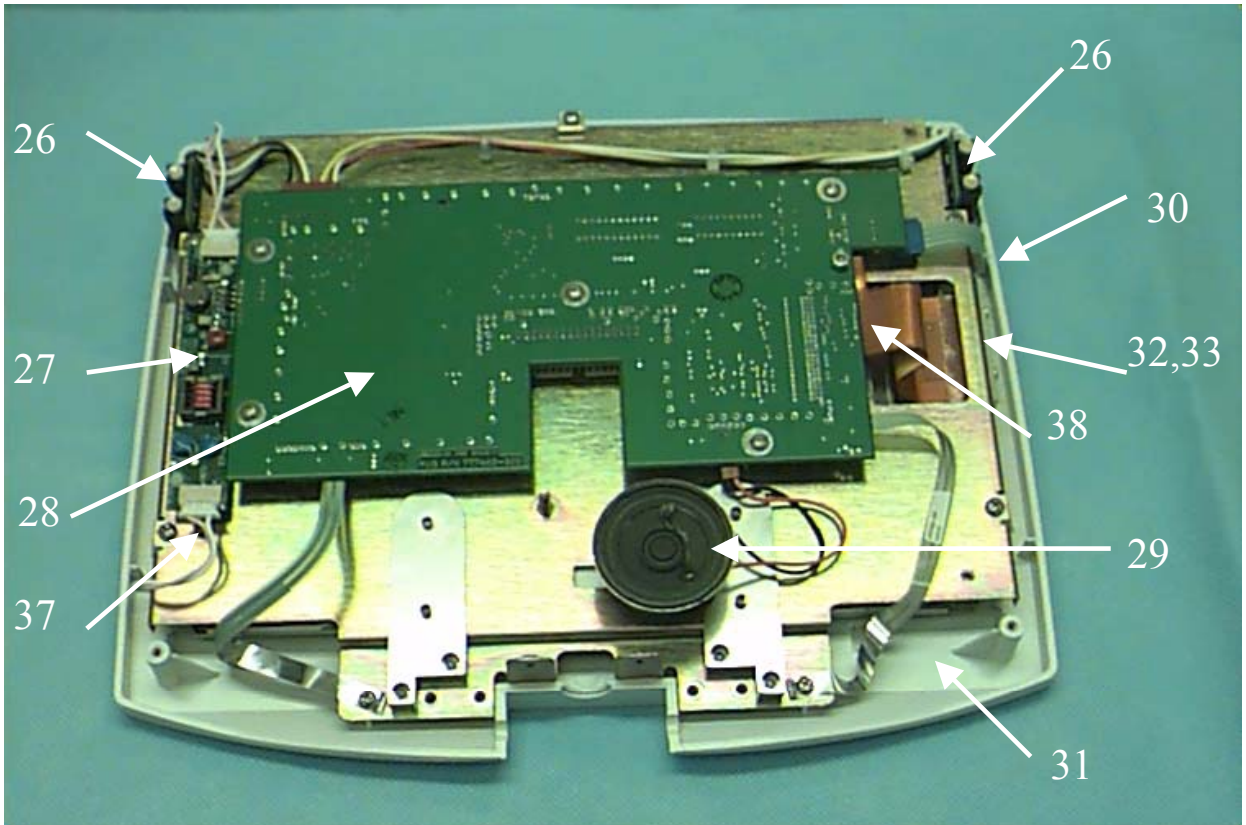
Frame Assembly



Frame Assembly

ITEM NO.	PART NO.	DESCRIPTION	QUANTITY
14	704050-000	Handle Assembly	1
15	704027-000	Rear Service Door Assembly, S/N < 1T00560	1
	704129-000	Rear Service Door Assembly, S/N ≥ 1T00560	1
	704189-000	Upgrade Kit, Rear Door, S/N <T560	1
16	704051-000	AC outlet	1
17	704007-001	Circuit Breaker	1
18	704052-000	CCA, External Ethernet	1
19	704053-000	115VAC power cord (not shown)	1
20	704054-000	220 VAC power cord (not shown)	1
21	704055-000	240VAC power cord (not shown)	1

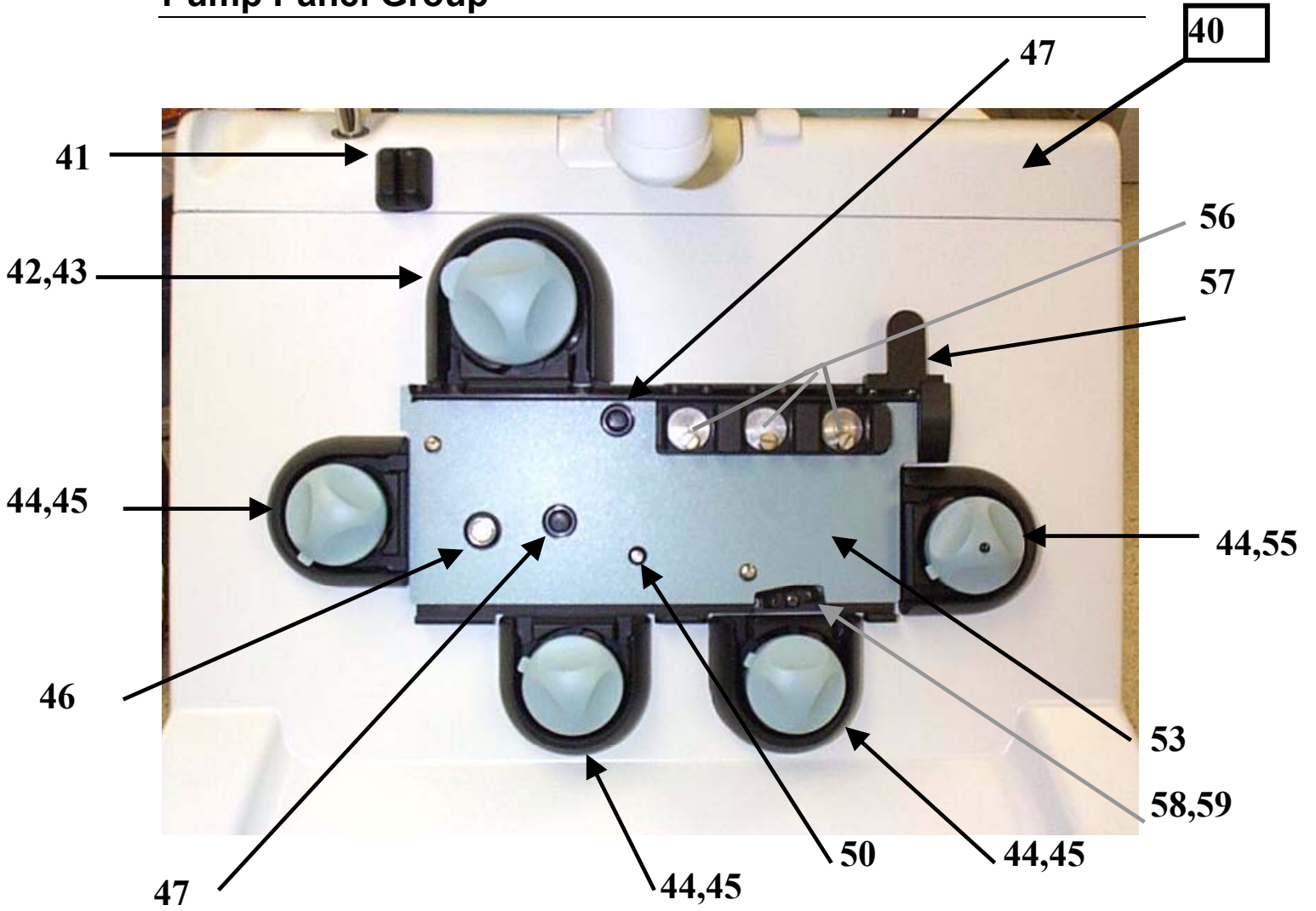
Display Group



Display Group

ITEM NO.	PART NO.	DESCRIPTION	QUANTITY
26	704056-000	Alarm LED/Cable Assembly	1
27	704057-000	Power Inverter CCA	1
28	704021-000	Display CCA	1
29	704058-000	Speaker	1
30	704042-200	Trim Tape, Display Housing	1 roll
31	704059-000	Display Housing, Front	1
32	704060-000	Matrix CCA(not shown)	1
33	704061-000	TouchScreen(not shown)	1
34	704062-000	Display Housing.Back(not shown)	1
35	704063-000	Pause Button(not shown)	1
36	704064-000	Stop Button(not shown)	1
	704207-000	Display Backlight Lamps (new style- LQ10D421)	
38	704089-000	Cable, Flex, Display	1

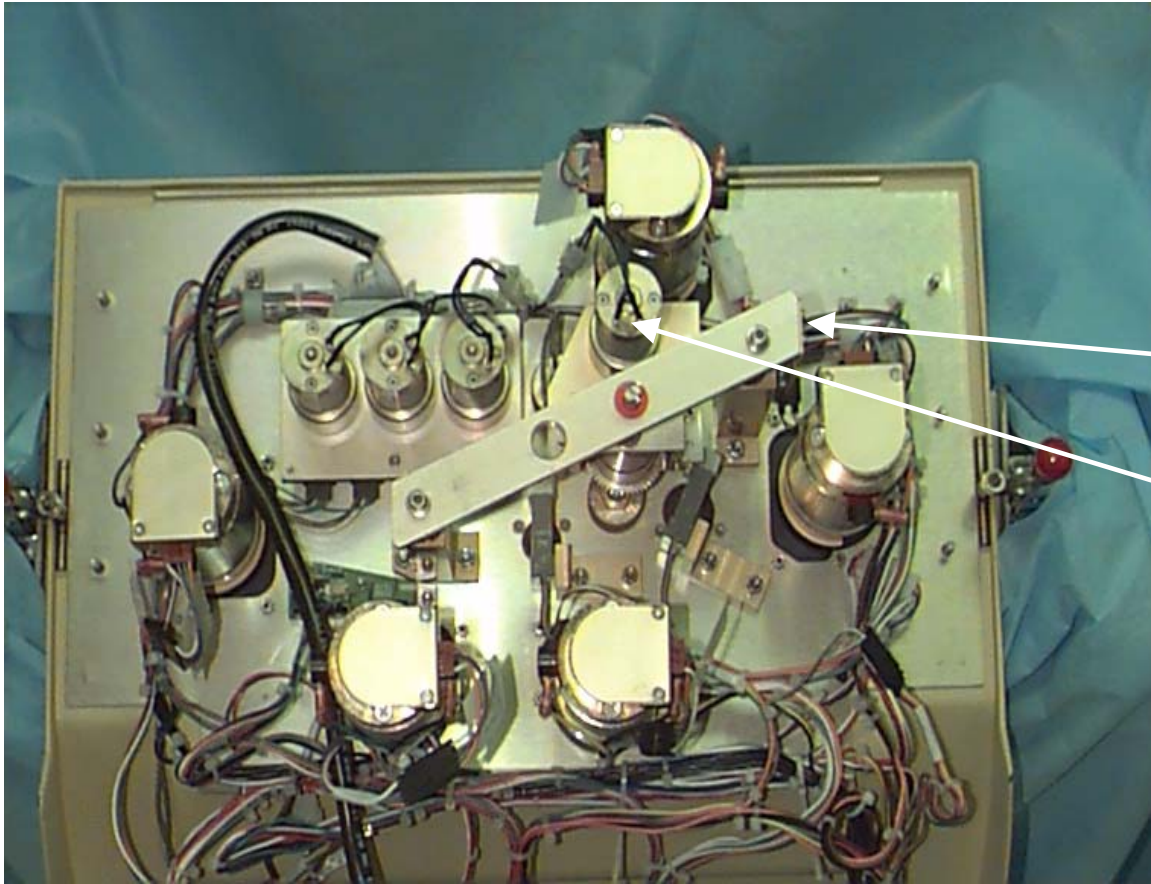
Pump Panel Group



Pump Panel Group

ITEM NO.	PART NO.	DESCRIPTION	QUANTITY
40	704191-000	Pump Panel, S/N < 560	1
	704225-000	Pump Panel, S/N \geq 560	1
41	704014-000	AC Detector	1
42	704004-001	Motor, Return	1
43	704001-001	Rotor, Return	1
44	704005-001	Motor, AC/Inlet/Plasma/Platelet	1
45	704003-000	Rotor, AC/Inlet/Plasma	1
	704138-000	Rotor, AC/Inlet/Plasma (improved loading)	1
46	704147-000	Sensor, APS	1
	704146-000	Magnet/Holder, Access Pressure Sensor	1
47	704010-000	Sensor, Level	1
50	704012-000	Sensor, CPS	1
53	704009-000	Linear Actuator Assembly(not shown)	1
55	704002-000	Rotor, Platelet	1
	704137-000	Rotor, Platelet, Improved Loading	1
56	704008-000	Valve Assembly	1
57	704155-000	Linear Actuator Cassette Tray	1
58	704013-000	Detector Assembly, RBC	1
59	704108-000	CCA, RBC Detector	1
60	704069-000	Optical Detector Assembly, Linear Actuator(not shown)	1
61	704032-000	Hall Sensor CCA, pumps (not shown)	1

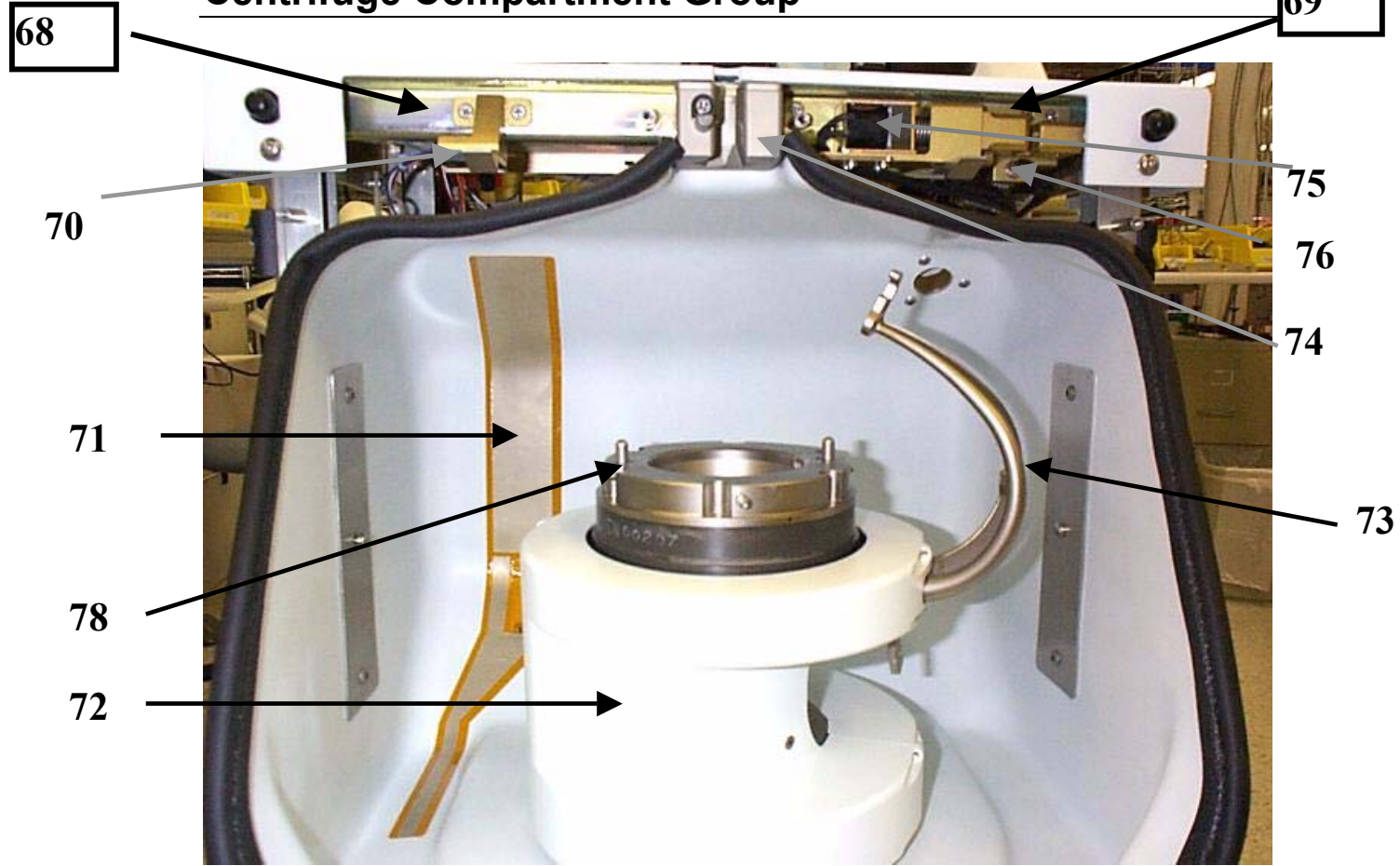
Pump Panel Group(Back View)



Pump Panel Group

ITEM NO.	PART NO.	DESCRIPTION	QUANTITY
41	704014-000	AC Detector	1
42	704004-001	Motor, Return	1
43	704001-001	Rotor, Return	1
44	704005-001	Motor, AC/Inlet/Plasma/Platelet	1
45	704003-000	Rotor, AC/Inlet/Plasma	1
	704138-000	Rotor, AC/Inlet/Plasma (improved loading)	1
46	704147-000	Sensor, APS	1
	704146-000	Magnet/Holder, Access Pressure Sensor	1
47	704010-000	Sensor, Level	1
50	704012-000	Sensor, Cent Pressure	1
53	704009-000	Linear Actuator Assembly	1
55	704002-000	Rotor, Platelet	1
	704137-000	Rotor, Platelet, Improved Loading	1
56	704008-000	Valve Assembly	1
57	704065-000	Linear Actuator Cassette Tray	1
58	704013-000	Detector Assembly, RBC	1
59	704108-000	CCA, RBC Detector	1
60	704069-000	Detector Assembly, Linear Actuator (not shown)	1
61	704032-000	Hall Sensor CCA, pumps (not shown)	1

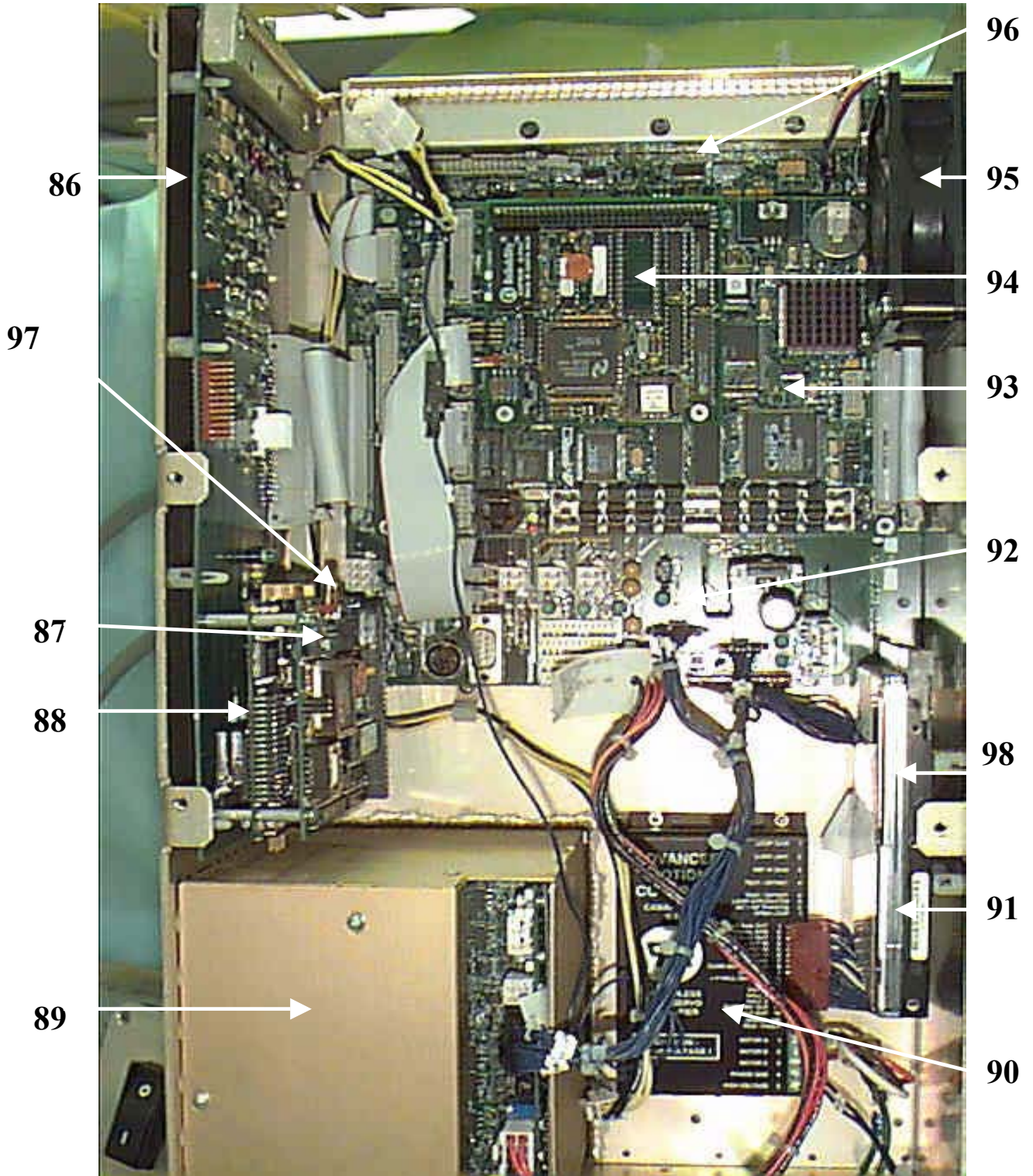
Centrifuge Compartment Group



Centrifuge Compartment Group

ITEM NO.	PART NO.	DESCRIPTION	QUANTITY
68	704193-000	Fascia, Left, S/N < 1T00560 (not shown, but in this location)	1
	704223-000	Fascia, Left, S/N ≥ 1T00560 (not shown, but in this location)	1
69	704194-000	Fascia, Right, S/N < 1T00560 (not shown, but in this location)	1
	704224-000	Fascia, Right, S/N ≥ 1T00560 (not shown, but in this location)	1
70	704032-000	Door Hall Effect Sensor	1
71	704016-000	Centrifuge Leak Detector	1
72	704030-002	Centrifuge Shroud	1 set
73	704028-000	Centrifuge Arm Assembly	1
74	704029-000	Upper Hex Collar Holder	1
75	704015-000	Door Lock Solenoid	1
76	704031-000	Door Optical Sensor	1
78	704088-000	Filler Latch Assembly (not shown)	1
79	704100-000	Door Lock Solenoid Assembly (not shown, Includes Items 76 and 75)	1
80	704084-000	Magnet, Door Latch (not shown)	1
	704135-200	Label, Magnet Cover	10
81	704097-000	Door Latch Assembly, S/N < T560 (not shown)	1
	704222-000	Door Latch Assembly, S/N ≥ T560 (not shown)	1
82	704099-000	Bushing, Centrifuge Door Lock Solenoid (not shown)	1
83	704106-000	Filler Assembly (not shown)	1
84	704096-000	Liner, Front Door (not shown)	1

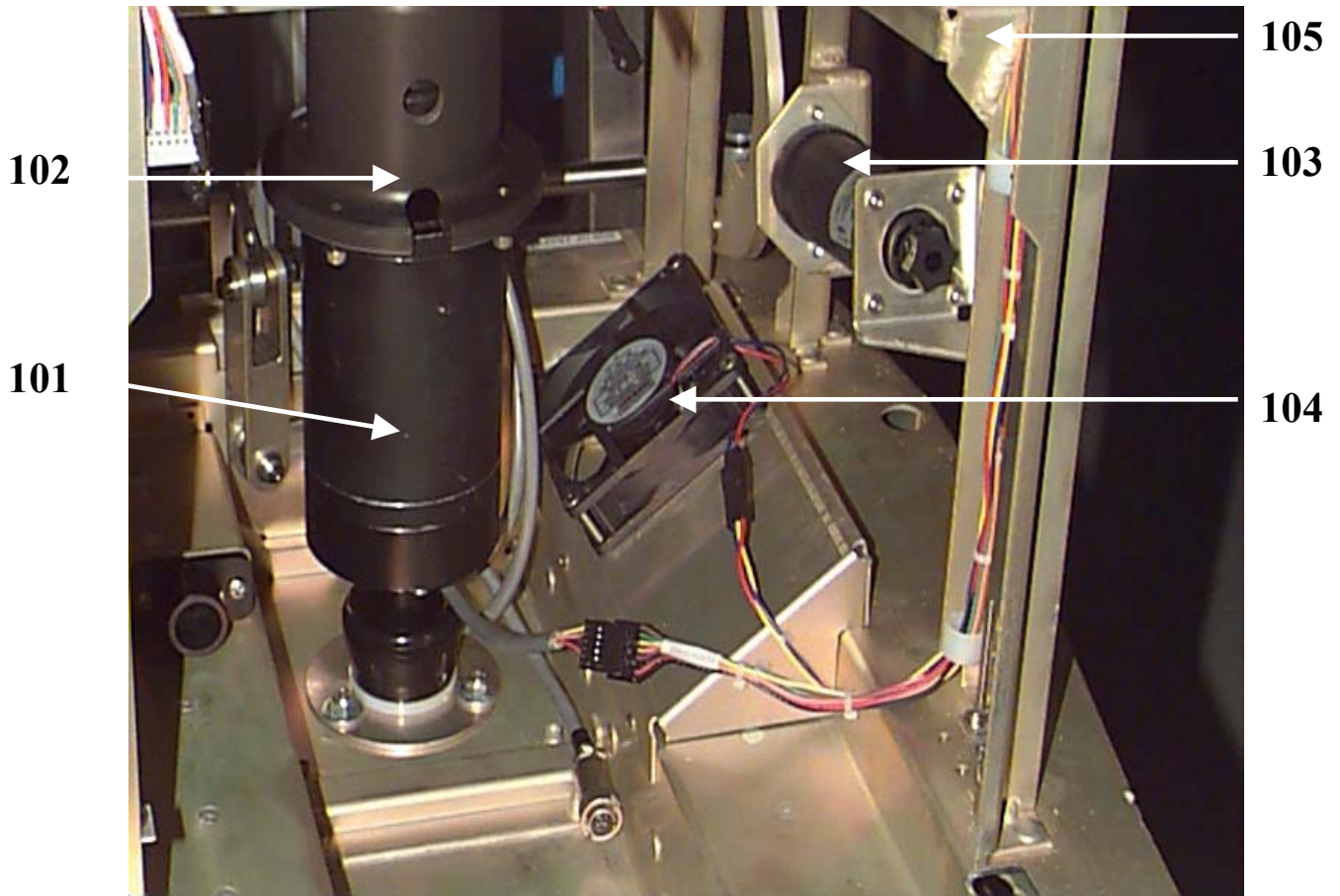
Electronics Box Group(New Control CCA Not Shown)



Electronics Box Group

ITEM NO.	PART NO.	DESCRIPTION	QUANTITY
86	704017-000	CCA, Ultrasonics/Safety	1
87	704125-001	CCA, Ethernet 9000, Safety	1
	704125-002	CCA, Safety Ethernet II, RJ45	1
88	704020-000	CCA, 486I, Safety Computer	1
89	704026-002	Power Supply, DC	1
	704026-102	Power Supply, DC, quiet fan	1
90	704025-000	Motor Controller, Centrifuge	1
91	704024-001	Hard Drive, Programmed, V4.01	1
	704024-102	Hard Drive, Programmed, V4.02	1
92	704022-000	CCA, Control, old style	1
	704217-000	CCA, Control, new style	1
	704216-000	CCA, 64v Switch	1
	704214-000	Kit, Upgrade, Control CCA (includes 704216-000 and 704217-000)	1
93	704018-001	CCA, 486I, Control Computer	1
	704145-000	Module, RAM, 16 MB, SIMM	1
94	704124-001	CCA, Ethernet 9000, Control	1
	704124-002	CCA, Control Ethernet II, RJ45	1
95	704040-000	Fan, Trima	1
96	704019-000	CCA, Motor Driver (not shown)	1
97	704109-000	Cable, Ethernet (10 Base 2)	1
98	704133-000	Kit, Hard Drive Shield (not shown)	1

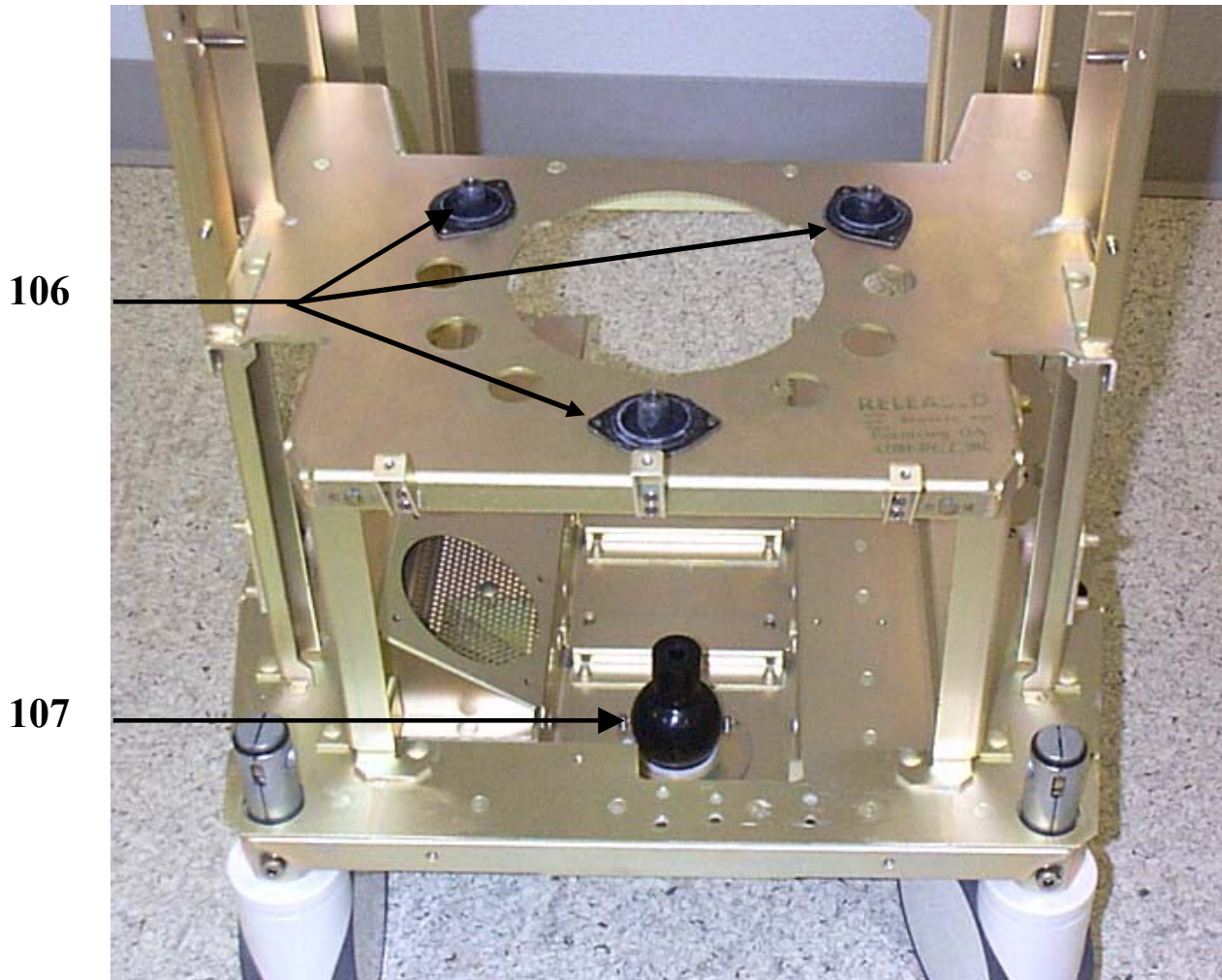
Centrifuge Motor Area Group



Centrifuge Motor Area Group

ITEM NO.	PART NO.	DESCRIPTION	QUANTITY
101	704034-000	Centrifuge Motor	1
102	704066-000	Centrifuge Geartrain	1
	704086-000	Kit, Geartrain Regrease	1
103	704120-000	Airpot, < T763	1
	704148-000	Upgrade Kit, Door Springs	1
104	704040-000	Fan, Trima	1
	704119-000	Fan, 5 inch, quiet	1
105	704068-000	CCA, Leak Detector (not shown)	1
106	704071-000	Centrifuge Mounts	3
107	704072-000	Precession Damper	1

Centrifuge Motor Area Group (continued)



Centrifuge Motor Area Group

ITEM NO.	PART NO.	DESCRIPTION	QUANTITY
101	704034-000	Centrifuge Motor	1
102	704066-000	Centrifuge Geartrain	1
103	704120-000	Airpot, S/N < T763	1
	704148-000	Upgrade Kit, Door Springs	1
104	704040-000	Fan, Trima	1
	704119-000	Fan, 5 inch, quiet	1
105	704068-000	CCA, Leak Detector (not shown)	1
106	704071-000	Centrifuge Mounts	3
107	704072-000	Precession Damper	1

Appendix A

This appendix includes optional equipment for languages, tools, manuals, equipment and supplies.

PART NO.	DESCRIPTION	QUANTITY
704036-971	Manual, Ops, Trima, French, 4.0	1
704036-972	Manual, Ops, Trima, German, 4.0	1
704036-973	Manual, Ops, Trima, Spanish, 4.0	1
704036-974	Manual, Ops, Trima, Japanese, 4.0	1
704036-975	Manual, Ops, Trima, Italian, 4.0	1
704036-976	Manual, Ops, Trima, Dutch, 4.0	1
704036-977	Manual, Ops, Trima, English, 4.0, 2002 Update	1
704087-006	Service Software, BCT EMS 5.1	1
704078-000	Etherlink Card, Service	1
704079-000	Cable, Crossover, Service	1
704080-000	Adapter, Etherlink Card	1
704038-001	Tools, RBC Spillover Check	1
704073-005	Tools ENET Isolation OVP/Reset	1
704075-000	Tool, Alignment	1
704082-000	Bag, Storage	1
704083-000	Cover, Machine	1
704085-000	Lift Handle	2
704091-000	EMI box upgrade, Seal Safe	1
704093-000	Key, Manual Door unlock	1
704098-004	Kit, PM, V4 (4.3 and above EMS)	1
704103-000	Manual, Electrical Schematics	1
704104-000	Kit, Repack, Trima	1
704105-000	Quiet Fan retrofit kit	1
704110-000	Keyboard/wrist strap kit	1
704111-002	Manual, Trima Service, V4/V5	1
704112-000	Software Install CD, V4.0 Upgrade/Downgrade	1
704112-200	Software Install CD, V4.01/4.02	12
704126-006	Software CD, TFD, 5.1 EMS	1
704127-000	Test Cassette, RBC	1
704131-000	Test Box, OVP/Reset, for old style Control CCA	1
704132-000	Logbook, Service	1

704139-000	Kit, Rotor Cap Upgrade	1
704140-001	Kit, Hardware	1
704141-000	Kit, 1 Time PM	1
704144-000	Kit, Upgrade, Ethernet RJ45	1
700148-000	Upgrade Kit, Door Springs	1
704149-001	Kit, PM, Seal Safe	1
704150-000	RBC Filtration Hook	1 set of 2
704151-200	Alcohol Wipes	1 box
704176-000	Guide, Quick Reference, Trima	1
704178-000	Tool, RBC Detector Calibration	1
704190-000	Addendum, Alarm/Alert Troubleshooting, 4.0	1
704195-000	Kit, Top Cap Seals/Drip Pan, Retrofit	1
704206-000	Kit, PM, V4/V5	1
704210-000	Checklist, Easy Loading, V4, English	1
704211-000	Manual, Ops, Trima, English, Accel	1
704212-000	Test Box, OVP/Reset, for new style Control CCA (includes 704213-000)	1
704213-000	Cable, OVP Test Box, for new style Control CCA	1
704215-000	Checklist, Easy Loading, V4, French	1
704218-000	Manual, Ops, Trima, Spanish, Accel	1

Appendix B Spare Parts List

Listed below are all Trima Automated Blood Component Collection System spare parts in numerical order.

Spare Description	Part Number
Rotor, Return, Quiet	704001-001
Motor, Return	704004-001
Motor, AC/Inlet/Plasma/Platelet	704005-001
Circuit Breaker, Main	704007-001
Valve Assembly	704008-000
Linear actuator Ass'y	704009-000
Sensor, Level	704010-000
Sensor, Centrifuge Pressure	704012-000
Detector Assy, RBC	704013-000
Air Sensor, AC	704014-000
Door Lock Solenoid	704015-000
Centrifuge Leak Detector	704016-000
CCA, Safety/Ultrasonic	704017-000
CCA, Control Computer, 486i	704018-001
CCA, Motor Driver	704019-000
CCA, 486, Safety Computer	704020-000
CCA, Display	704021-000
CCA, Control	704022-000
Hard Drive, V4.01	704024-101
Hard Drive, V4.02	704024-102
Hard Drive, V4.03	704024-103
Motor Controller, Cent.	704025-000
Power Supply, DC, Rev B	704026-002
Power Supply, DC, quiet fan	704026-102
Rear Door, S/N < T560	704027-000
Centrifuge Arm assembly	704028-000
Hex Collar Holder	704029-000
Centrifuge Shroud	704030-002
Door Optical Sensor	704031-000
Door Hall Effect sensor	704032-000
Brake Assembly	704033-000
Centrifuge Motor	704034-000
Assy, Trima Ops Manual, French, 4.0	704036-971
Assy, Trima Ops Manual, German, 4.0	704036-972
Assy, Trima Ops Manual, Spanish, 4.0	704036-973
Assy, Trima Ops Manual, Japanese, 4.0	704036-974
Assy, Trima Ops Manual, Italian, 4.0	704036-975
Assy, Trima Ops Manual, Dutch, 4.0	704036-976

Update, V4 Ops Manual, Trima, 2002	704036-977
Tools, RBC Spillover Check	704038-001
Fan, Trima	704040-000
Trim Tape, Display Housing	704042-200
Panel Assembly, Left Side, S/N < T560	704043-000
Front Door Assembly, S/N < T560	704044-000
Panel Assembly, Bottom, S/N < T560	704045-000
Panel Assembly, Right Side, S/N < T560	704046-000
IV Pole Assembly	704047-000
Power Switch Assembly	704048-000
Handle Assembly	704050-000
AC Outlet	704051-000
Ethernet Assembly, external	704052-000
Power Cord, 115VAC	704053-000
Power Cord, 220VAC	704054-000
Power Cord, 240VAC	704055-000
Alarm/LED Assembly, Display	704056-000
CCA, Power Inverter	704057-000
Speaker Assembly	704058-000
Housing, GUI Display, front	704059-000
CCA, Display Matrix	704060-000
Touchscreen, GUI	704061-000
Housing, GUI Display, back	704062-000
Button, Pause	704063-000
Button, Stop	704064-000
Geartrain, Centrifuge	704066-000
CCA, Leak Detector	704068-000
Optical Detector Ass'y, Linear Actuator -	704069-000
Centrifuge Shock Mounts	704071-000
Precession Damper	704072-000
Tools, ENET Isolation, OVP, Reset	704073-005
Tool, Alignment	704075-000
Addendum, Ops Manual, English, 4.0	704077-000
PC Card, Etherlink, Field Service	704078-000
Cable, Crossover, Field Service	704079-000
Adapter, E-link, Field Service	704080-000
Bag, Storage	704082-000
Cover, Machine	704083-000
Magnet, Door Latch	704084-000
Lift Handle	704085-000

Kit, Geartrain Regrease	704086-000
Service Software CD, BCT EMS V5.1	704087-006
Filler Latch Kit	704088-000
Cable, Flex, Display	704089-000
EMI Box Upgrade, Seal Safe, S/N <1T00120	704091-000
Key, Manual Door Unlock	704093-000
End Cap, IV Pole	704094-000
Gasket Kit, S/N \leq 1T00135	704095-000
Liner, Front Door	704096-000
Latch Ass'y, Front Door	704097-000
Bushing, Door Lock	704099-000
Door Lock Ass'y	704100-000
Gasket Kit, S/N >1T00135 up to 1T00560	704101-000
Manual, Electrical Schematics	704103-000
Repack Kit, Trima	704104-000
Quiet Fan retrofit kit	704105-000
Filler Ass'y	704106-000
Loop Dampeners, Centrifuge	704107-000
CCA, RBC Detector	704108-000
Cable, Ethernet, 10 Base 2	704109-000
Keyboard/Wrist strap kit	704110-000
Trima Service Manual, V4.0/V5	704111-002
Fan, 5 inch, Quiet	704119-000
CCA, Control Ethernet, RJ-45	704124-002
CCA, Safety Ethernet, RJ-45	704125-002
Software CD, TFD, 5.1 EMS	704126-006
RBC Test Cassette	704127-000
Caster, Rear	704128-000
Caster, Front	704129-000
Bumper, Display Console	704130-200
Test Box, OVP/Reset	704131-000
Logbook, Service	704132-000
Kit, Hard Drive Shield	704133-000
Label, Seal Safe S/N	704134-200
Label, Magnet Cover	704135-200
Rotor, Platelet, Improved Loading	704137-000
Rotor, AC/Inlet/Plasma, Improved Loading	704138-000
Kit, Rotor Cap Upgrade	704139-000
Kit, Hardware	704140-001
Kit, 1 Time PM	704141-000

Bar Code Reader	704142-000
Upgrade Kit, Ethernet RJ-45	704144-000
Module, RAM, 16 MB, SIMM	704145-000
Magnet/Holder, Access Pressure Sensor	704146-000
Access Pressure Sensor	704147-000
Upgrade Kit, Door Springs	704148-000
PM Kit, Seal Safe	704149-001
Hook, RBC Filtration	704150-000
Alcohol Wipes	704151-200
Cassette Plate Ass'y	704155-000
Guide, Quick Reference, Trima	704176-000
Tool, RBC Detector Calibration	704178-000
Manual, Ops, French, Accel	704180-000
Manual, Ops, Italian, Accel	704181-000
Manual, Ops, German, Accel	704182-000
Manual, Ops, Dutch, Accel	704184-000
Manual, Ops, Japanese, Accel	704185-000
Manual, Ops, Portuguese, Accel	704186-000
Manual, Ops Swedish, Accel	704187-000
Door, Rear, Retrofit Kit, S/N ≤ 1T00560	704189-000
Addendum, Alarm/Alert Troubleshooting	704190-000
Pump Panel, S/N ≤ 1T00560	704191-000
External Pedal Shaft, Brake Assembly	704192-000
Fascia, Left, S/N ≤ 1T00560	704193-000
Fascia, Right, S/N ≤ 1T00560	704194-000
Fascia, Lower, S/N ≤ 1T00560	700195-000
Kit, Top Cap Seals/Drip Pan, Retrofit	704205-000
PM Kit. V4/V5	704206-000
Lamp, Display Brightness, New Style	704207-000
Checklist, Easy Loading, English	704210-000
Manual, Ops, English, Accel	704211-000
Test Box, OVP/Reset, for use with new Control CCA (includes P/N 704213-000)	704212-000
Cable, OVP, for new Control CCA	704213-000
Kit, Upgrade, Control CCA (includes 704216-000 and 704217-000)	704214-000
Checklist, Easy Loading, French	704215-000
CCA, 64v Switch	704216-000
CCA, Control, new style	704217-000
Manual, Ops, Trima, Spanish, Accel	704218-000

Set Performance Report	704596-001
Rear Door Assy., \geq S/N 560	704219-000
Front Door Assy., \geq S/N 560	704220-000
Lower Panel Assy., \geq S/N 560	704221-000
Front Door Latch Assy., \geq S/N 560	704222-000
Facia, Left, \geq S/N 560	704223-000
Facia, Right \geq S/N 560	704224-000
Pump Panel \geq S/N 560	704225-000
Panel Assy. IV Pole Side \geq S/N 560	704228-000
Panel Assy. PWR Switch Side \geq S/N 560	704229-000
Kit, V5.0/V4.03/V4.02 Dwn/Re-install	704230-200

Appendix C

This appendix includes the recommended spare part list.

ITEM NO.	PART NO.	DESCRIPTION	QUANTITY
1	704001-001	Rotor, Return, Quiet	1
2	704137-000	Rotor, Platelet	1
3	704138-000	Rotor, AC/Inlet/Plasma	1
4	704004-001	Motor, Return	1
5	704005-001	Motor, AC/Inlet/Plasma/Platelet	1
6	704012-000	Centrifuge Pressure Sensor	1
7	704016-000	Centrifuge Leak Detector	1
8	704017-000	CCA, Safety/Ultrasonics	1
9	704020-000	CCA, Safety Computer, 486i	1
10	704022-000	CCA, Control	1
11	704024-103	Hard Drive, V4.03	1
12	704032-000	Hall Effect Sensor, Pump	1
13	704042-200	Trim Tape, Display Housing	1 roll
14	704053-000	Power Cord, 115v	1
15	704206-000	Kit, PM, V4.0/V5.0	1
16	704144-000	Kit, Ethernet Card Upgrade	1
17	704147-000	Access Pressure Sensor	1