



Service Reference

A-dec Dental Lights and Monitor Mounts

Copyright

© 2014 A-dec Inc. All rights reserved.

A-dec Inc. makes no warranty of any kind with regard to this material, including, but not limited to, the implied warranties of merchantability and fitness for a particular purpose. A-dec Inc. shall not be held liable for any errors contained herein or any consequential or other damages concerning the furnishing, performance or use of this material. The information in this document is subject to change without notice. If you find any problems in the documentation, please report them to us in writing. A-dec Inc. does not warrant that this document is error-free.

No part of this document may be copied, reproduced, altered, or transmitted in any form or by any means, electronic or mechanical, including photocopying, recording, or by any information storage and retrieval system, without prior written permission from A-dec Inc.

Trademarks and Additional Intellectual Property Rights

A-dec, the A-dec logo, A-dec 500, A-dec 300, Cascade, Cascade Master Series, Century Plus, Continental, Decade, ICX, ICV, Performer, Preference, Preference Collection, Preference ICC, and Radius are trademarks of A-dec Inc. and are registered in the United States and other countries. A-dec 400, A-dec 200, Preference Slimline, and reliablecreativesolutions are also trademarks of A-dec Inc. None of the trademarks or trade names in this document may be reproduced, copied, or manipulated in any manner without the express, written approval of the trademark owner.

Certain touchpad symbols are proprietary to A-dec Inc. Any use of these symbols, in whole or in part, without the express written consent of A-dec Inc., is strictly prohibited.

Product Service

Product service is available through your local authorized A-dec dealer. For service information, or to locate an authorized dealer, contact A-dec at 1.800.547.1883 in the USA and Canada or 1.503.538.7478 worldwide, or visit www.a-dec.com.

Regulatory Information

Regulatory information mandated by agency requirements is provided in the *Regulatory Information, Specifications, and Warranty* document (p/n 86.0221.00), which is available in the Document Library at www.a-dec.com. This document includes:

- Serial number identification
- Software revisions
- Warranty specifications
- Deluxe touchpad help messages
- Intended application and use statements
- Identification of symbols
- Environmental specifications
- Classification of equipment
- Electrical rating and electromagnetic information
- Chair load capacity

Other Service Documents

This document is a companion to the *A-dec Dental Lights and Monitor Mounts Service Guide* (p/n 86.0326.00). The guide contains product overviews, service and usage, adjustments and maintenance, circuit board components, and troubleshooting.

For information on the A-dec 200 Dental Light, refer to the *A-dec 200 Service Reference* (p/n 86.0324.00) and the *A-dec 200 Service Guide* (p/n 86.0016.00).

The *A-dec 300, 400, and 500 Delivery Systems Service Guide* (p/n 86.0382.00) contains service, maintenance, and troubleshooting content. The *A-dec 300, 400, and 500 Delivery Systems Service Reference* (p/n 86.0383.00) contains illustrated parts breakdown content. Circuit board components and flow diagrams are in both documents. These documents include cuspidors, floor boxes, and support centers.

The *A-dec 311, 411, and 511 Dental Chairs Service Guide* (p/n 86.0380.00) contains service, maintenance, and troubleshooting content. The *A-dec 311, 411, and 511 Delivery Systems Service Reference* (p/n 86.0381.00) contains illustrated parts breakdown content. Circuit board components and flow diagrams are in both documents. These documents include cuspidors, floor boxes, and support centers.

Dental Lights and Monitor Mounts Illustrated Parts Breakdown



Dental Lights



Monitor Mounts

Dental Lights Illustrated Parts Breakdown

Dental Light Head Assemblies



**LED (571L - 577L)
Light Head Assembly**

page 4

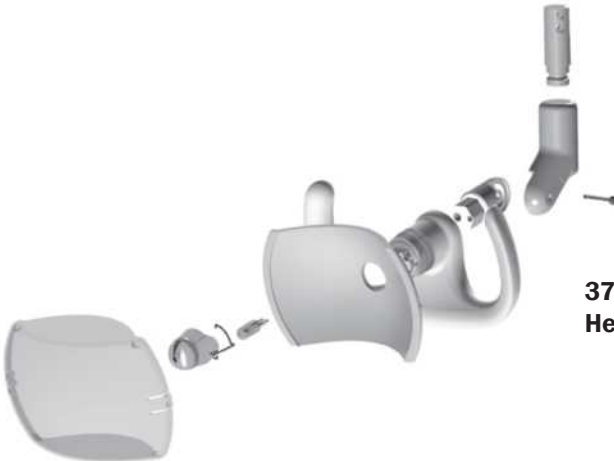
**LED (571L - 577L)
Controller Assembly**

page 6



**571/572 and 6300
Light Head Assembly**

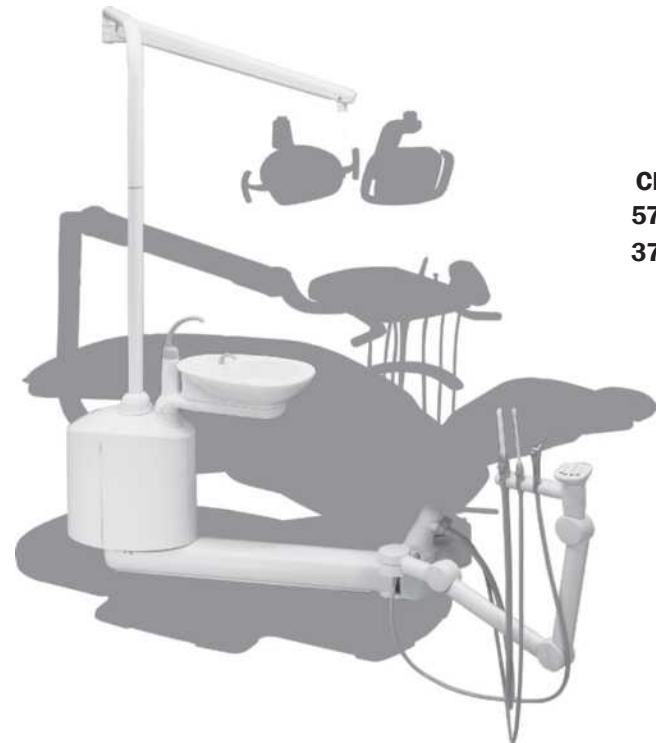
page 8



**371/372 Light
Head Assembly**

page 10

Dental Light Mounting Assembly Options



Chair Mounted
571/572 and LED (571L/572L) Light
371/372 and LED (571L/572L) Light

page 13



6300 and LED (574L) Cabinet Mounted Light Assembly

page 25



page 25

6300 and LED (575L) Wall Mounted Light Assembly



page 25

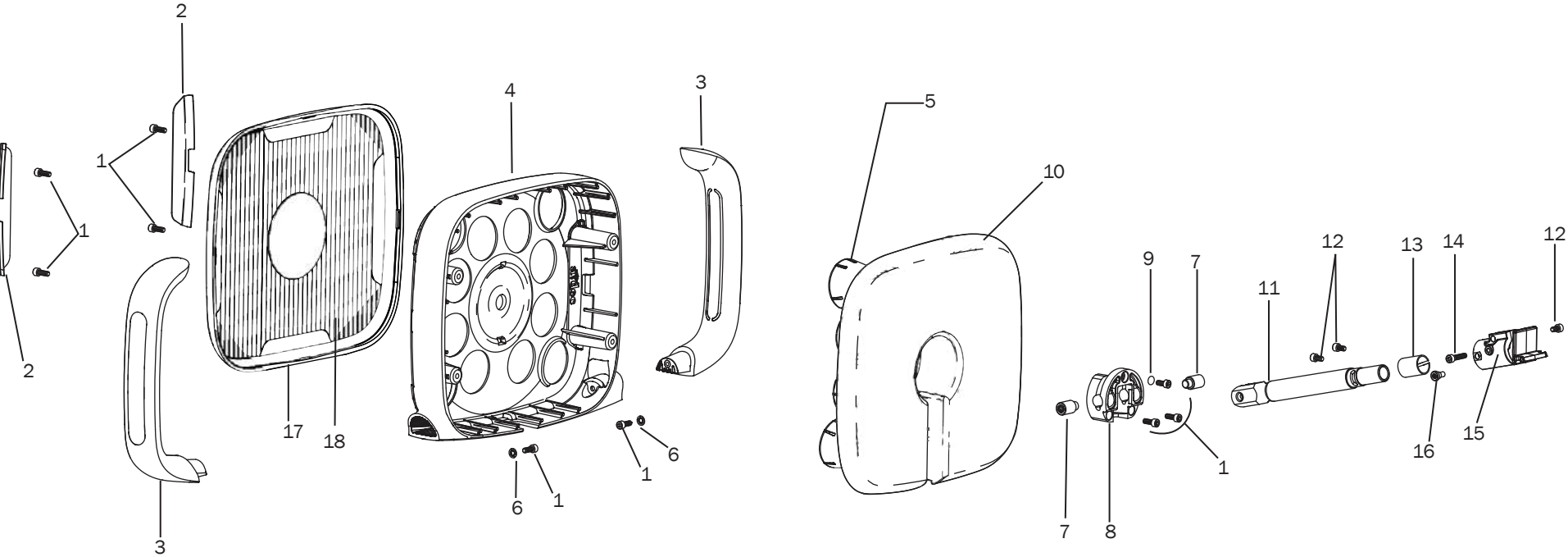
6300 and LED (576L) Ceiling Mounted Light Assembly



page 25

6300 and LED (577L) Track Mounted Light Assembly

LED (570L - 577L) Light Head Assembly



LED (570L - 577L) Light Head Assembly

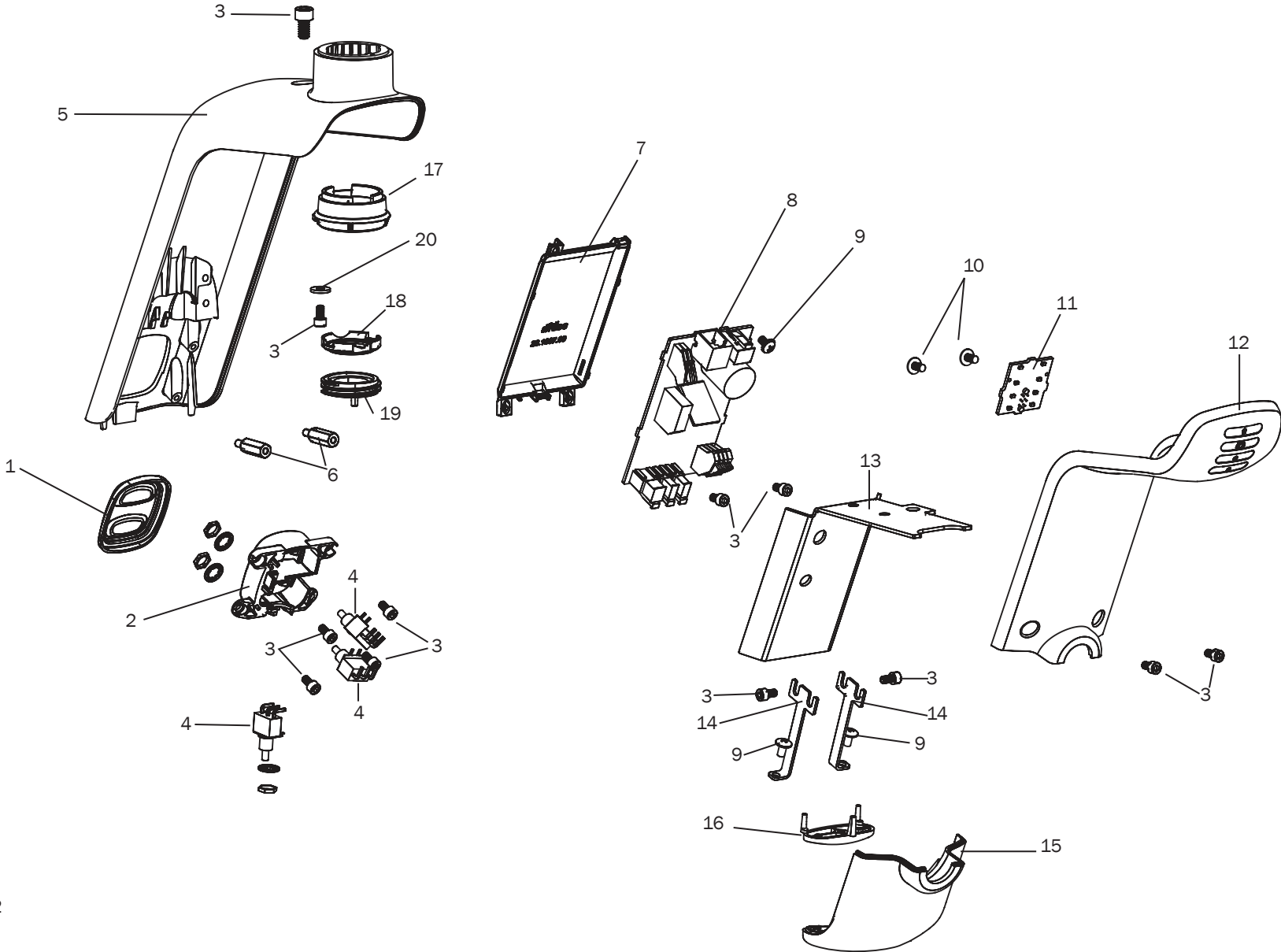
Item	Part Number	Description	Replacement Kit
1	001.033.00	Socket head screw, 6-32 x 3/8" stainless steel	90.1341.00, 90.1350.00, 90.1350.01, 90.1390.00
2	28.1900.00	Label	90.1342.00, 90.1342.01, 90.1350.00, 90.1350.01, 90.1390.00
3	28.1870.00 † 28.1870.01 †	Handle, gray Handle, surf	90.1342.00, 90.1342.01, 90.1350.00, 90.1350.01
4	28.1871.00 †	Front housing	90.1350.00, 90.1350.01, 90.1350.00, 90.1350.01
5	N/A †	Lens assemblies	90.1350.00, 90.1350.01
6	004.073.01	Washer, internal tooth	90.1342.00, 90.1342.01, 90.1350.00, 90.1350.01
7	28.1877.00 †	Pivot axle	90.1341.00
8	28.1875.00 †	Pivot yoke	90.1341.00, 90.1350.00, 90.1350.01
9	013.074.00	Compression Ring, .240 OD X .56 FL	90.1341.00, 90.1350.00, 90.1350.01
10	28.1865.00 †	Back housing	90.1350.00, 90.1350.01
11	28.1876.00 †	Shaft	90.1341.00
12	001.034.00	Screw	90.1341.00, 90.1350.00, 90.1350.01
13	016.174.00 †	Bushing	90.1341.00, 90.1350.00, 90.1350.01
14	001.010.00	Screw	90.1341.00, 90.1350.00, 90.1350.01
15	28.1902.00 †	Lower pivot housing	90.1341.00, 90.1350.00, 90.1350.01
16	28.1880.00	Stop pivot screw	90.1341.00, 90.1350.00, 90.1350.01
17	28.1901.00 †	Shield gasket	90.1343.00
18	28.1874.00 †	Lens shield	90.1343.00

† Indicates that the individual part is not available for sale

Replacement Kits	Description
90.1341.00	Pivot shaft assembly kit (includes items 1, 7, 8, 9, 11, 12, 13, 14, 15, 16)
90.1342.00	Surf handle replacement kit (includes items 1, 2, 3, 6)
90.1342.01	Gray handle replacement kit (includes items 1, 2, 3, 6)
90.1350.00	Surf LED head Replacement kit (includes items 1-6, 8-10, 12-16)
90.1350.01	White LED head replacement kit (includes items 1-6, 8-10, 12-16)
90.1390.00	LED front housing (includes items 1, 2, 4)
90.1343.00	Lens shield and gasket kit (includes items 17 and 18)



LED (570L – 577L) Controller Assembly



LED (570L - 577L) Controller Assembly

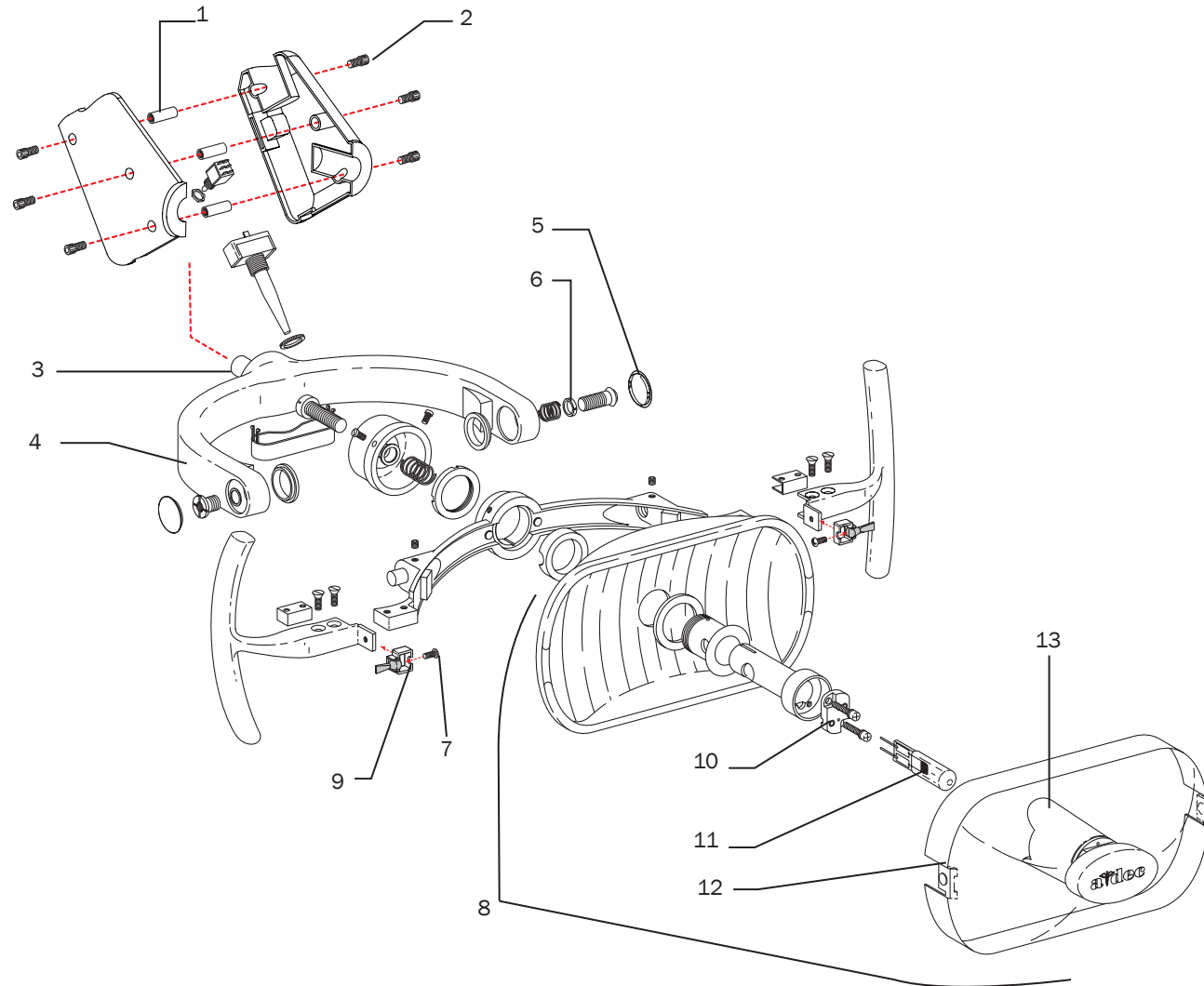
Item	Part Number	Description	Replacement Kit
1	28.1862.00	Mode button cover	90.1348.00
2	28.1863.00 †	Switch holder	90.1348.00
3	001.034.00	Socket head screw, 6-32 x 1/4"	90.1348.00
4	041.728.00 †	Switch	
5	28.1910.01	Driver housing	
6	041.747.00	Stand-off	
7	28.1887.00 †	Driver board cover	90.1346.00
8	43.0200.00 †	LED driver PCA	90.1346.00
9	001.073.00	Pan head SEMS Phillips screw, 6-32 x 1/4	90.1347.00, 90.1347.01
10	001.275.00	Truss head Phillips screw, 6-19 x 1/4	
11	43.0217.00 †	LED indicator display	90.1345.00
12	28.1857.00 † 28.1857.01 †	Display housing, gray Display housing, surf	90.1344.00, 90.1344.01
13	28.1869.00 †	Bracket	90.1344.00, 90.1344.01
14	28.1898.00 †	Lower bracket	90.1347.00, 90.1347.01
15	28.1861.00 28.1861.01	Lower driver cover, gray Lower driver cover, surf	90.1347.00, 90.1347.01
16	28.1914.00	Power button cap	90.1348.00
17	28.1860.00	Locking nut, LED upper pivot	90.1349.00
18	28.1955.00	Pivot adjustment wedge	90.1347.00, 90.1347.01, 90.1349.00
19	28.1885.00	Friction adjust, LED pivot	90.1349.00
20	004.012.00	Washer, flat, stl pl, .156 ID	90.1349.00

† Indicates that the individual part is not available for sale

Replacement Kit	Description	Replacement Kit	Description
90.1344.00 90.1344.01	Indicator cover assembly, gray (includes items 3, 12, 13) Indicator cover assembly, surf (includes items 3, 12, 13)	90.1348.00	LED mode switch assembly (includes items 1, 2, 3, 16)
28.1861.01 28.1861.00	Power button cover kit, surf (includes item 15) Power button cover kit, gray (includes item 15)	90.1349.00	Neck pivot assembly (includes items 17, 18, 19, 20)
90.1346.00	Driver board assembly kit (includes items 7, 8)	90.1345.00	Indicator board cable kit (includes item 11)
90.1347.01 90.1347.00	Lower cover on/off button kit, gray (includes items 9, 14, 15) Lower cover on/off button kit, surf (includes items 9, 14, 15)		



571/572 and 6300 Light Head Assembly

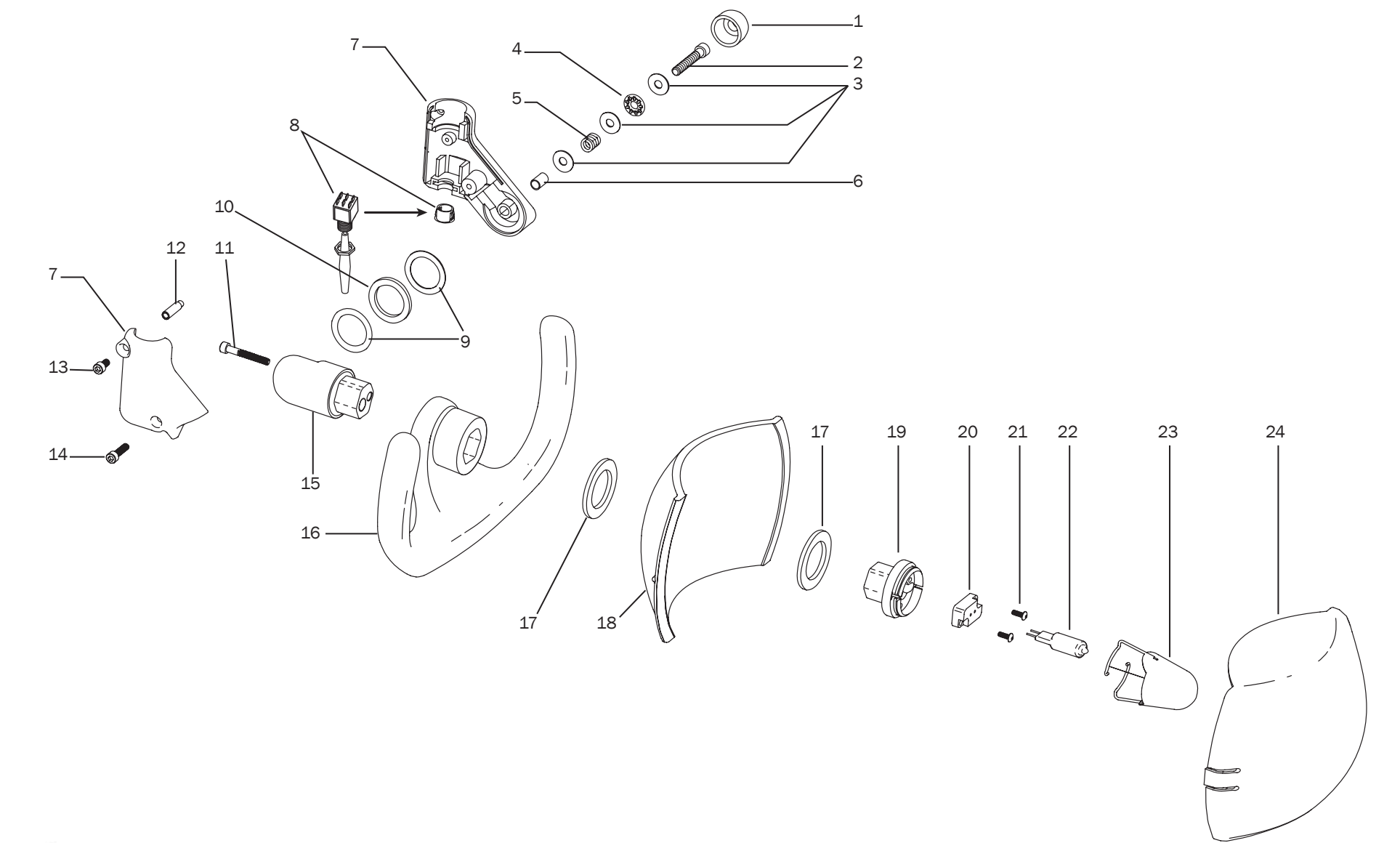


571/572 and 6300 Light Head Assembly

Item	Part Number	Description
1	28.1467.00	Stand-off
2	002.135.00	Screw, socket head 10-32 x 1/2" stainless steel
3	28.1001.00	Bushing, pivot, light yoke
4	28.1009.01 28.1009.00	Light yoke, white Light yoke, surf
5	28.1536.01 28.1536.00	Plug, light yoke, white Plug, light yoke, surf
6	28.1008.00	Spacer, light yoke
7	002.140.00	Screw, button head socket patch, 6-32 stainless steel
8	28.1429.01 28.1429.00	Dental light head, white Dental light head, surf
9	28.1012.01 28.1012.00	Toggle bracket assembly, package of 2, white Toggle bracket assembly, package of 2, surf
10	90.0463.01	Lamp socket kit
11	041.709.00	Lamp
12	28.0503.02	Lens, dental light (includes nosepiece)
13	28.0555.00	Lamp shield with M3 x 8 screws



371/372 Light Head Assembly



371/372 Light Head Assembly

Item	Part Number	Description	Replacement Kit
1	28.1320.01	Cap	90.1220.00
2	005.148.00	Screw, socket head, 1/4-28 x 1 1/2", stainless steel	90.1396.00, 90.1220.00
3	016.053.00	Washer, thrust	90.1220.00
4	016.054.00	Bearing thrust	90.1220.00
5	013.129.00	Spring compression, .480 x .620 FL	
6	016.067.00 †	Bearing sleeve, .253. ID x .500 LG	90.1220.00
7	28.1173.01 †	Switch housing	90.1219.00
8	018.002.06 43.0249.00 †	Plug hole, 1/2" Switch assembly, dental light	
9	004.207.00	Washer, flat, stainless steel	90.1220.00
10	28.1175.00 †	Washer, thrust, 1.362 OD	90.1220.00, 28.1175.01 (Thrust washer kit, package of 5)
11	002.036.01	Screw, socket head 10-32 x 1 3/8"	90.1396.00
12	28.1002.00	Pin, switch housing	90.1219.00
13	002.130.00	Screw, socket head, 10-32 x 3/8"	90.1219.00
14	002.073.00	Screw, socket head, 10-32 x 3/4	90.1219.00
15	28.1641.00 †	Light yoke, rear	
16	28.1633.00 †	Molded handle	
17	28.1628.00	Gasket, reflector light	
18	28.1609.00	Reflector	90.1396.00
19	28.1630.00	Light socket holder	90.1227.00
20	28.1632.00 †	Bulb socket	90.1227.00
21	001.167.00	Screw, button head socket, 6-32 x 3/8", stainless steel	
22	041.709.00	Bulb, halogen 17 volt	
23	28.1635.00	Bulb cap assembly	
24	28.1634.00	Shield, reflector	

† Indicates that the individual part is not available for sale

Replacement Kit	Description
90.1396.00	Light reflector kit (includes items 2, 11, 18)
90.1220.00	Vertical tilt adjustment kit (includes items 1, 2, 3, 4, 6, 9, 10)
90.1219.00	Light housing kit (includes item 7, 12, 13, 14)
90.1227.00	Bulb socket replacement kit (includes items 19, 20)

Dental Chair-Mounted Illustrated Parts Breakdown

571 and LED (571L)
Light Assembly

page 14

572 and LED (572L)
Light Assembly

page 16



371 Light Assembly
Before July 2011

page 18

371 and LED (571L)
Light Assembly
Effective July 2011

page 20

372 and LED (572L)
Light Assembly

page 22



LED (570L - 577L) Light
Head Assembly

page 4



571/572 and 6300
Light Head Assembly

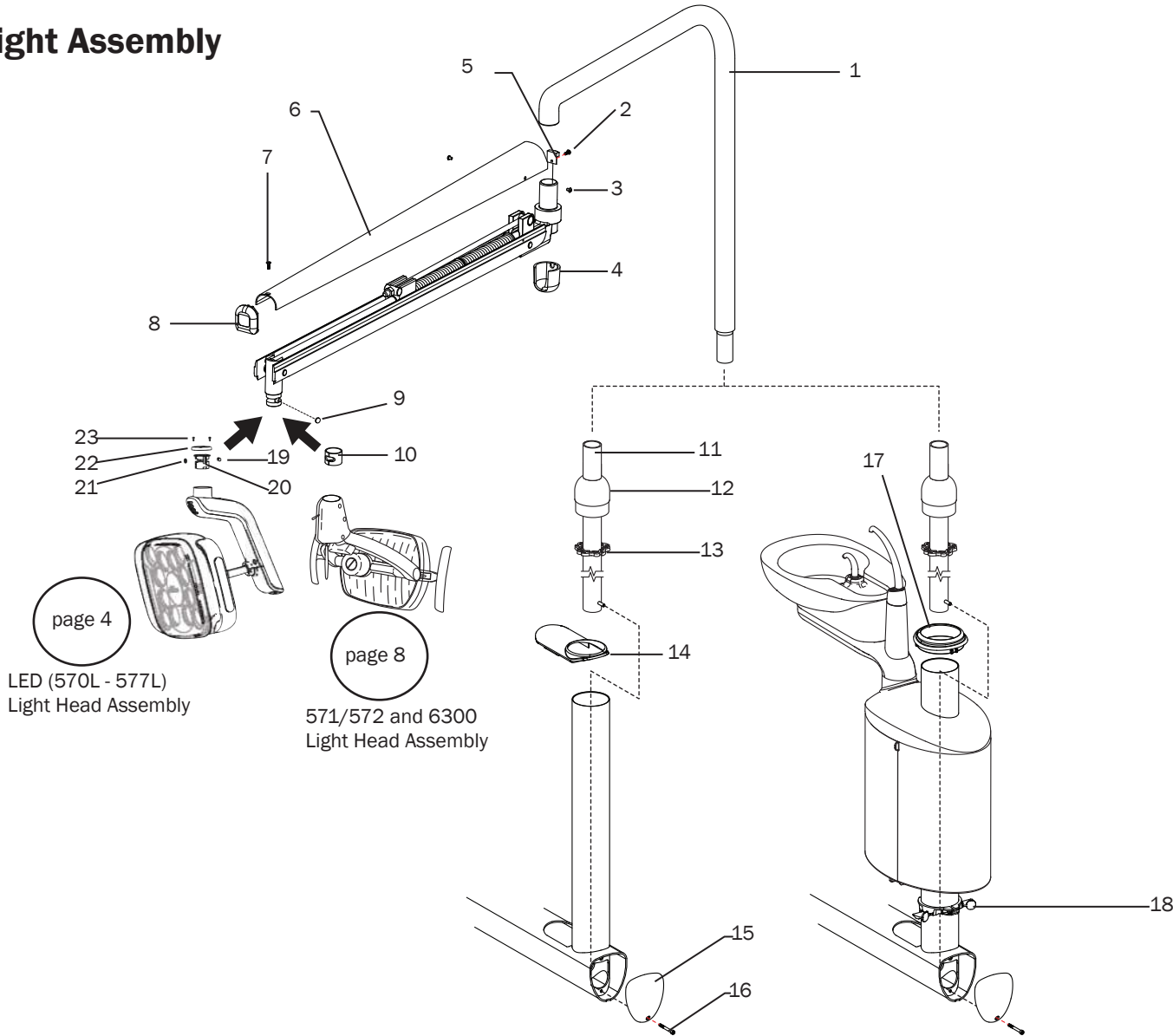
page 8



371/372 Light
Head Assembly

page 10

571 and LED (571L) Light Assembly



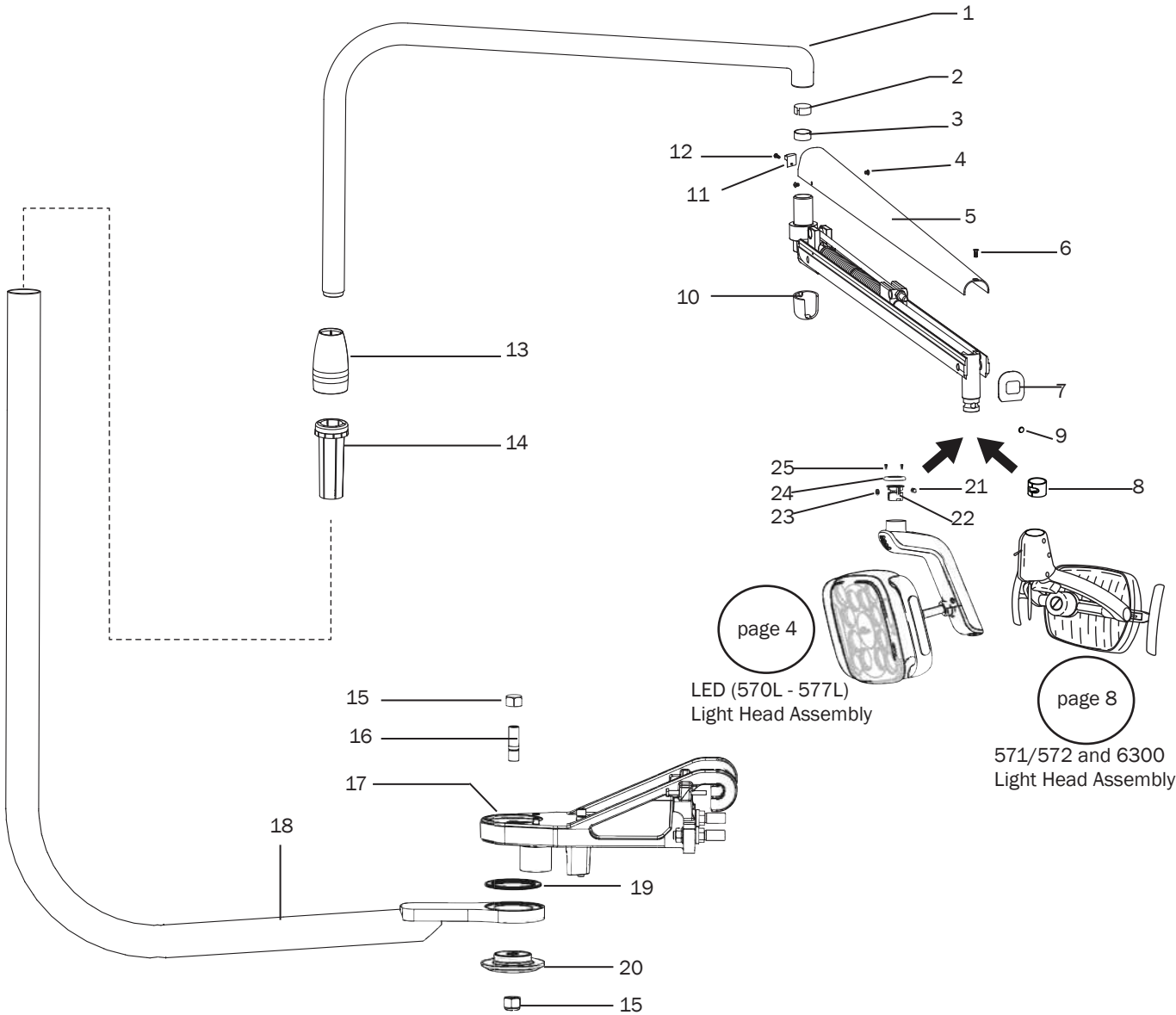
571 and LED (571L) Light Assembly

Item	Part Number	Description	Replacement Kit
1	28.0486.01 28.0486.00	Light post, white Light post, surf	
2	001.167.00	Screw, button head 6-32 x 3/8	
3	002.103.00	Screw, button head socket 6-32 x 3/16	
4	28.1531.01 28.1531.00	Knuckle cover, white Knuckle cover, surf	
5	28.1500.00	Retainer, light arm	
6	28.1059.01 28.1059.00	Flexarm cover, white Flexarm cover, surf	
7	003.099.00	Screw, flat head 6-19 x 1/2"	
8	75.0008.01 75.0008.00	Cap, light arm, white Cap, light arm, surf	
9	28.1868.00	Floating stop	
10	28.1003.00	Swivel bushing	
11	28.1535.01 28.1535.00	Light post weldment, lower, white Light post weldment, lower, surf	
12	28.1509.01 28.1509.00	Support, light post, white Support, light post, surf	
13	28.1574.00	Support, light post, internal	
14	77.0091.01 77.0091.00	Cover, horizontal arm, white Cover, horizontal arm, surf	
15	77.0096.01 77.0096.00	Cover, end, lower support arm, white Cover, end, lower support arm, surf	
16	002.124.00	Screw, socket head 10-32 x 1 3/4"	
17	77.0095.01 77.0095.00	Trim ring, white Trim ring, surf	
18	77.0232.00	Spacer	
19	28.1868.00	Floating stop	90.1349.00, Neck pivot assembly kit (includes items 19, 20, 21, 22, 23)
20	28.1859.00 †	Adjustable bearing	90.1349.00, Neck pivot assembly kit (includes items 19, 20, 21, 22, 23)
21	28.0679.00 †	Pivot stop	90.1349.00, Neck pivot assembly kit (includes items 19, 20, 21, 22, 23)
22	28.1951.00	Cap	90.1349.00, Neck pivot assembly kit (includes items 19, 20, 21, 22, 23)
23	001.015.00	Socket head cap screw, 2-56 X .187	90.1349.00, Neck pivot assembly kit (includes items 19, 20, 21, 22, 23)

† Indicates that the individual part is not available for sale



572 and LED (572L) Light Assembly



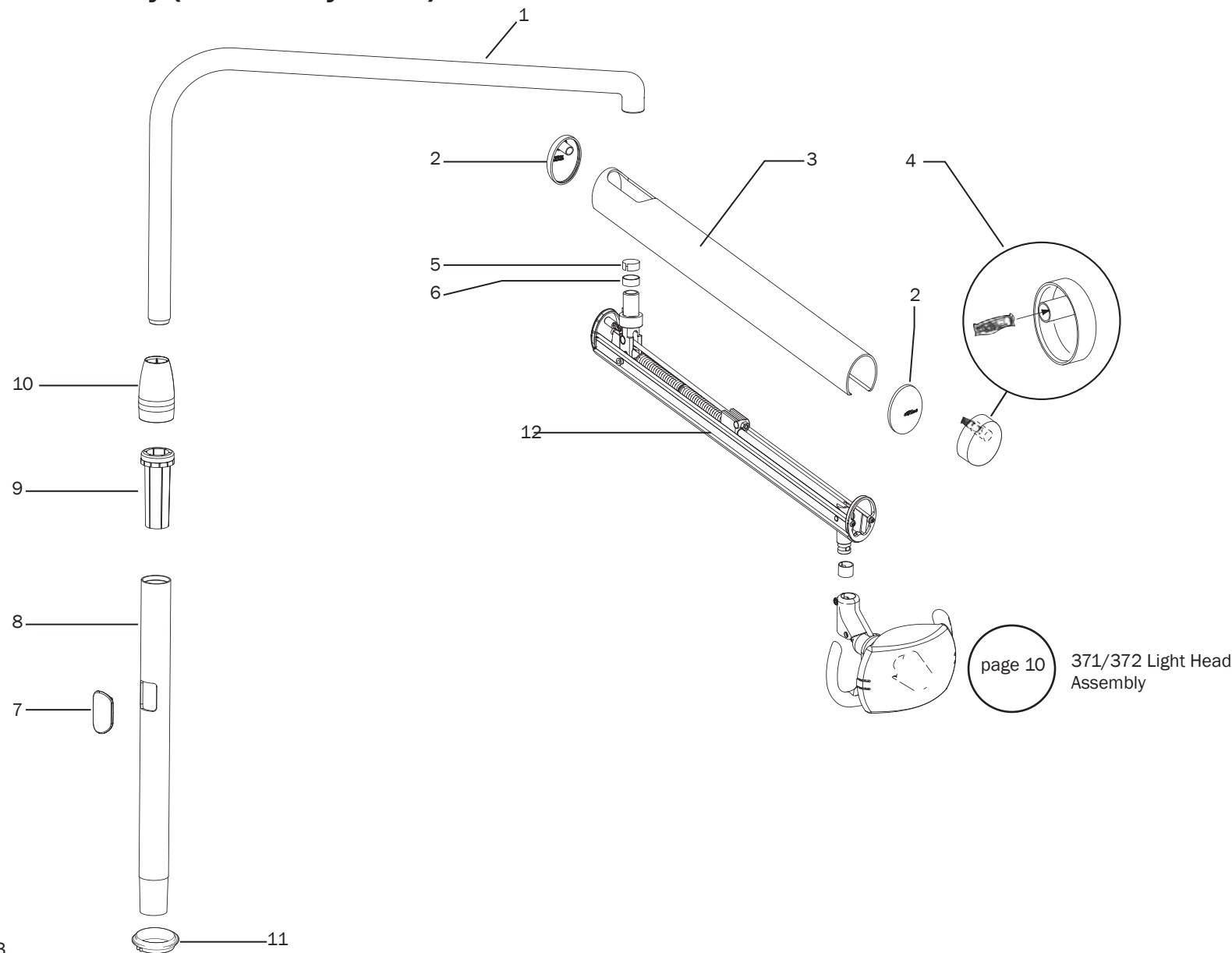
572 and LED (572L) Light Assembly

Item	Part Number	Description	Replacement Kit
1	28.0486.01 24.0486.00	Light post, white Light post, surf	
2	016.149.00	Sleeve, 1.059 x 1.138 x 5	
3	016.097.00	Sleeve, oil, 1.059 x 1.138 x .5	
4	002.103.00	Screw, socket head 6-32 x 3/16"	
5	28.1059.01 28.1059.00	Flexarm cover, white Flexarm cover, surf	
6	003.099.00	Screw, flat head 6-19 x 1/2"	
7	75.0008.01 75.0008.00	Cap, light arm, white Cap, light arm, surf	
8	28.1003.00	Bushing	
9	28.1868.00	Floating stop	90.1349.00, Neck pivot assembly kit (includes items 9, 22, 23, 24, 25)
10	28.1531.01 28.1531.00	Knuckle cover, white Knuckle cover, surf	
11	28.1500.00	Retainer, light arm	
12	001.167.00	Screw, button head, 6-32 x 3/8"	
13	77.0824.00	Trim ring	
14	12.0974.00	Bushing, post, 1-1/2 ID x 2.0 OD x 5.2 LG	
15	006.124.00	Clinch nut	
16	77.1070.00	Stud	
17	77.0186.00	Unit mount	
18	28.1839.00	Radius mount post weldment	
19	016.133.00	Thrust bearing	
20	77.1148.00	Front mount adaptor	
21	28.0679.01	Pivot stop, package of 5	
22	28.1859.00 †	Adjustable bearing	90.1349.00, Neck pivot assembly kit (includes items 9, 22, 23, 24, 25)
23	28.0679.00 †	Pivot stop	90.1349.00, Neck pivot assembly kit (includes items 9, 22, 23, 24, 25)
24	28.1951.00	Cap	90.1349.00, Neck pivot assembly kit (includes items 9, 22, 23, 24, 25)
25	001.015.00	Socket head cap screw, 2-56 X .187	90.1349.00, Neck pivot assembly kit (includes items 9, 22, 23, 24, 25)

† Indicates that the individual part is not available for sale



371 Light Assembly (Before July 2011)



371 Light Assembly (Before July 2011)

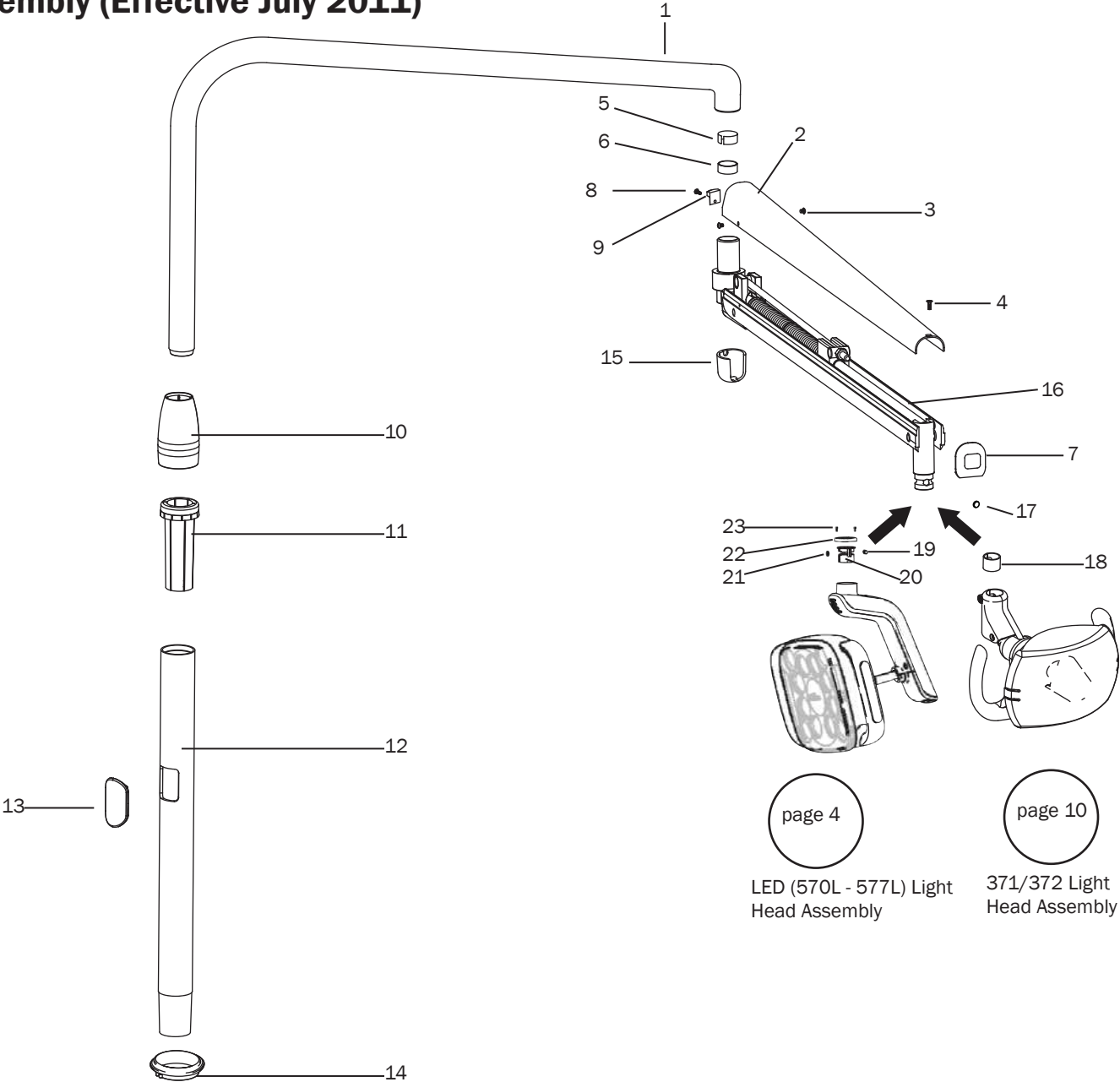
Item	Part Number	Description	Replacement Kit
1	28.1623.00	Light post, upper	28.1849.00
2	75.2018.00	Cap, light arm	
3	28.1626.00 †	Cover, flexarm	28.1849.00
4	041.709.00	Bulb, 17 volt Halogen	28.1849.00
5	016.149.00	Sleeve, 1.138 ID x 500 LG	28.1849.00
6	016.097.00	Sleeve, 1.059 ID x 500 LG	28.1849.00
7	75.0150.00	Internal post plug	28.1849.00
8	28.1624.00	Intermediate light post	
9	12.0974.00	Bushing, post, 1-1/2 ID x 2.0 OD x 5.2 LG	
10	77.0824.00	Trim ring	
11	77.0876.00	Trim ring, post box, 2"	
12	n/a † *	Flexarm assembly	28.1849.00

† Indicates that the individual part is not available for sale

* Effective July 2011, replaced with new style flexarm (page 21, item 16)

Replacement Kit	Description
28.1849.00	Flexarm assembly kit (includes items 1, 3, 4, 5, 6, 7, 12)

371 and LED (571L) Light Assembly (Effective July 2011)



371 and LED (571L) Light Assembly (Effective July 2011)

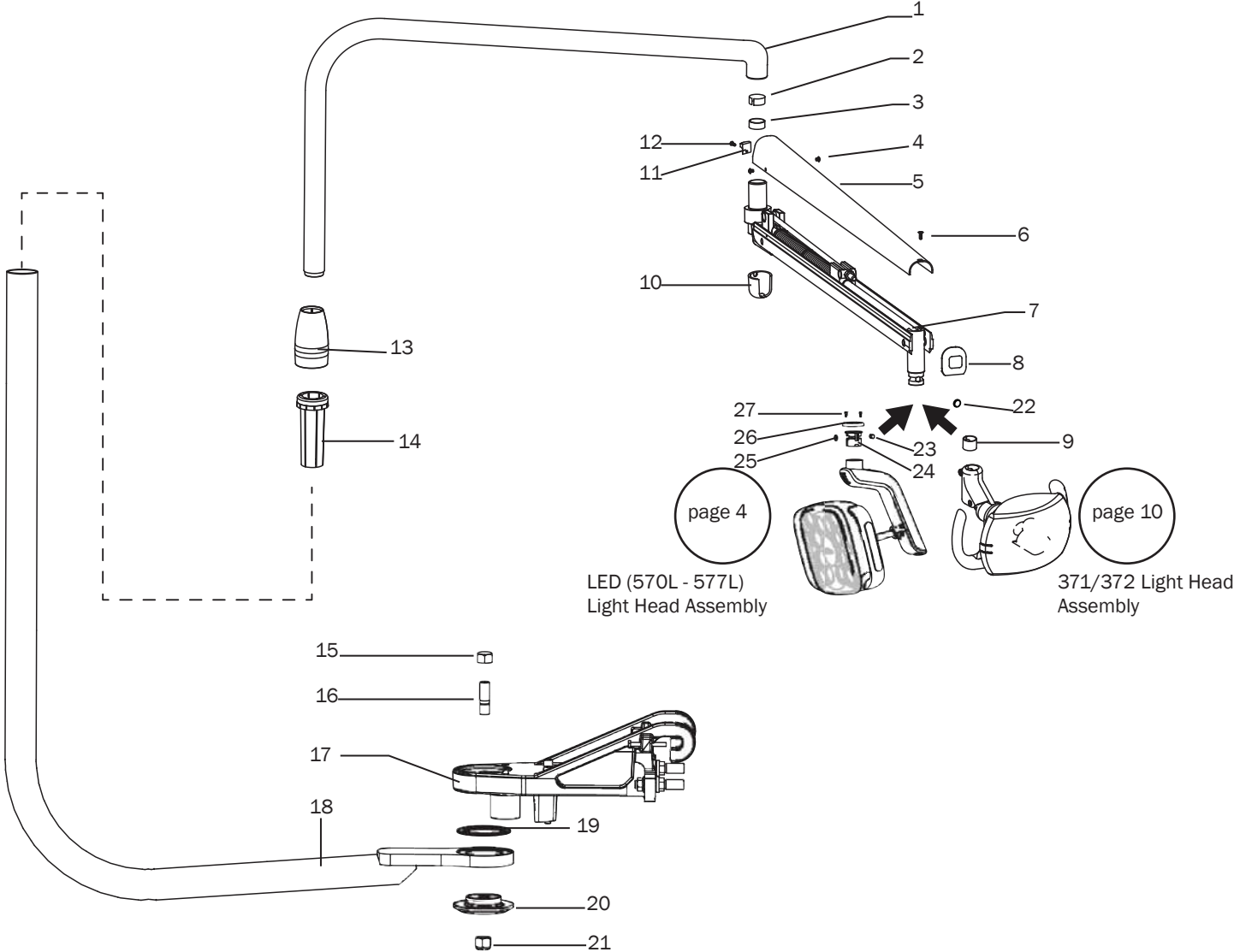
Item	Part Number	Description	Replacement Kit
1	28.1623.00	Light post, upper	28.1849.00
2	28.1059.01	Flexarm cover	28.1849.00
3	002.103.00	Screw, socket head 6-32 x 3/16", stainless steel	28.1849.00
4	003.099.00	Screw, flat head 6-19 x 1/2"	28.1849.00
5	016.149.00	Sleeve, 1.138 ID x 500 LG	28.1849.00
6	016.097.00	Sleeve, 1.059 ID x 500 LG	28.1849.00
7	75.0008.01	End cap, light arm	28.1849.00
8	001.167.00	Screw, button head 6-32 x 3/8", stainless steel	28.1849.00
9	28.1500.00	Retainer, light arm	
10	77.0824.00	Trim ring	28.1849.00
11	12.0974.00	Bushing, post, 1-1/2 ID x 2.0 OD x 5.2 LG	28.1849.00
12	28.1624.00	Intermediate light post	28.1849.00
13	75.0150.00	Internal post plug	28.1849.00
14	77.0876.00	Trim ring, post box, 2"	28.1849.00
15	28.1531.01	Knuckle cover	28.1849.00
16	n/a †	Flexarm assembly	28.1849.00
17	28.1868.00	Floating stop	
18	28.1003.00	Bushing	
19	28.0679.01	Pivot stop, package of 5	
20	28.1859.00 †	Adjustable bearing	90.1349.00
21	28.0679.00 †	Pivot stop	90.1349.00, 28.1849.00
22	28.1951.00	Cap	
23	001.015.00	Socket head cap screw, 2-56 X .187	

† Indicates that the individual part is not available for sale

Replacement Kit	Description
28.1849.00	Flexarm assembly kit (includes items 1 - 8, 10 - 15, 21)
90.1349.00	Neck pivot assembly kit (includes items 20, 22)



372 and LED (572L) Light Assembly



372 and LED (572L) Light Assembly

Item	Part Number	Description	Replacement Kit
1	28.1512.01 †	Light post, upper weldment	28.0486.01, Upper light post assembly
2	016.097.00	Sleeve, 1.059 ID x 500 LG	
3	016.149.00	Sleeve, 1.138 ID x 500 LG	
4	002.103.00	3/8 -16 x 3 x 1/4 socket head screw, stainless steel	
5	28.1059.00	Flexarm cover	
6	003.099.00	Flat head Phillips screw, 6019 x 1/2	
7	n/a †	Flexarm assembly	28.1849.00, Flexarm assembly
8	75.0008.00	End cap	
9	28.1003.00	Bushing	
10	28.1531.00	Knuckle cover	
11	28.1500.00	Retainer	
12	001.167.00	Button head socket screw, stainless steel	
13	77.0824.00	Trim ring	
14	12.0974.00	Bushing	
15	006.124.00	Clinch nut	
16	77.1070.00	Stud	
17	77.0186.00	Unit mount	
18	28.1839.00	Radius mount post weldment	
19	016.133.00	Thrust bearing	
20	77.1148.00	Front mount adaptor	77.1022.00, Unit mount module
21	006.124.00	Clinch nut	
22	28.1868.00	Floating stop	
23	28.0679.01	Pivot stop, package of 5	
24	28.1859.00 †	Adjustable bearing	90.1349.00, Neck pivot assembly kit
25	28.0679.00 †	Pivot stop	90.1349.00, Neck pivot assembly kit
26	28.1951.00	Cap	
27	001.015.00	Socket head cap screw, 2-56 X .187	

† Indicates that the individual part is not available for sale



6300/LED (574L – 577L) Cabinet, Wall, Ceiling, Track Mounted Illustrated Parts Breakdown



6300 Light Head Assembly

page 8



page 4

LED (574L-577L) Light Head Assembly



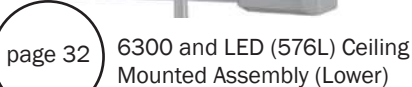
page 30

6300 and LED (576L) Ceiling Mounted Assembly (Upper)



page 26

6300 and LED (574L) Cabinet Mounted Assembly



page 32

6300 and LED (576L) Ceiling Mounted Assembly (Lower)



page 34

6300 and LED (577L) Track Mounted Assembly



page 28

6300 and LED (575L) Wall Mounted Assembly



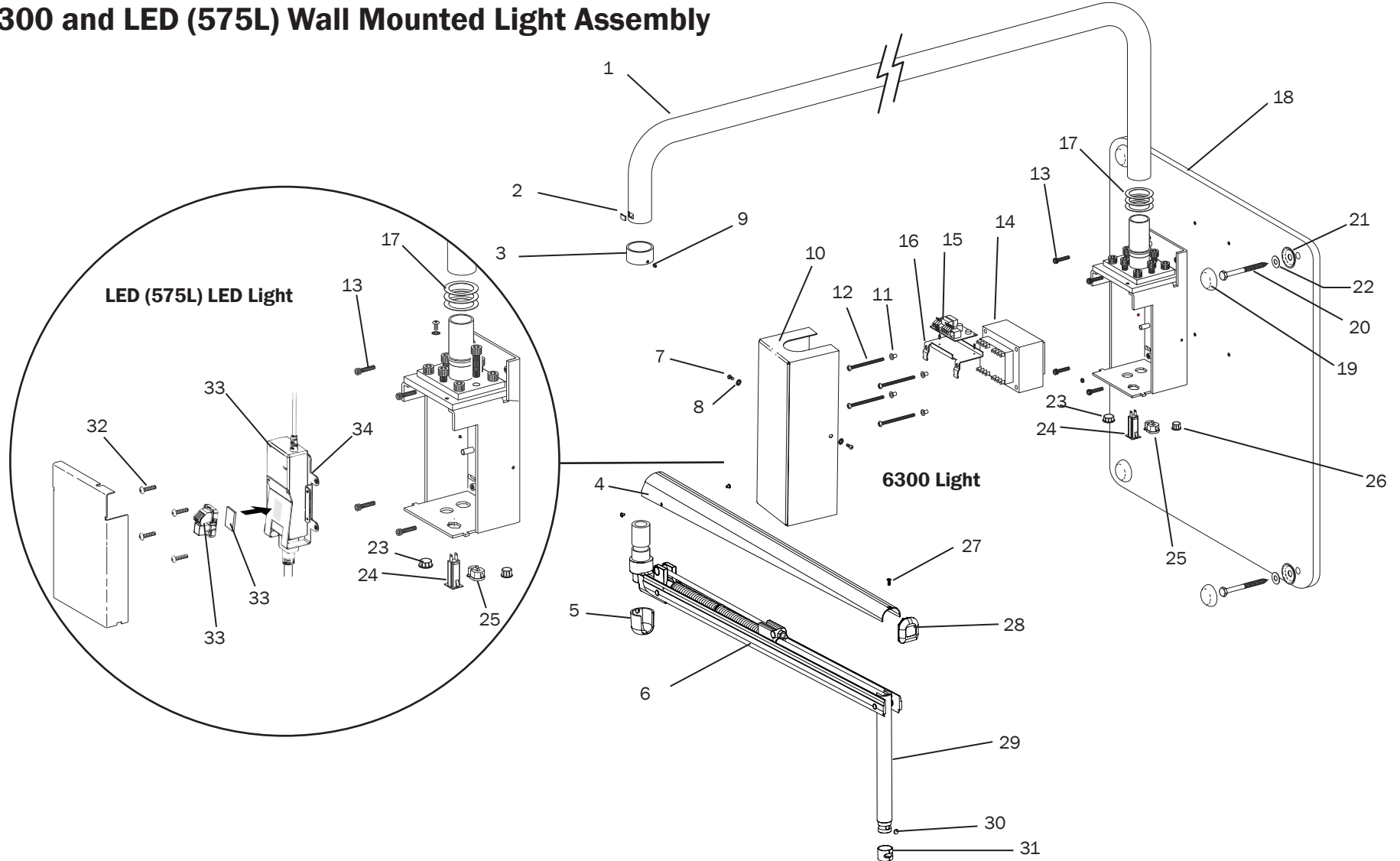
page 3

6300 and LED (574L) Cabinet Mounted Light Assembly

Item	Part Number	Description
1	28.1814.00	Pivot arm, light, wall, white
	28.1055.00	Pivot arm, light, wall, surf
2	28.0566.00	Locking tab
3	28.1092.01	Collar, retaining track, white
	28.1092.00	Collar, retaining track, surf
4	007.002.01	Setscrew, 6-32 x 3/16, package of 10
5	002.120.00	Socket head screw, 1/4-20 x 1"
6	005.012.03	Button head screw 10-32 x 3/8", stainless steel
7	004.076.00	Lock washer, ext tooth, #10
8	004.071.00	Washer, flat 1.50 ID
9	002.068.00	Screw, socket head 3/8-16 x 1"
10	28.1564.00	Mounting bracket
11	018.042.00	Bushing, snap, 5/8" Dia.
12	28.0758.00	Circuit breaker, 10 Amp
13	006.002.00	Nut, hex 10-32 x 3/8 x 1/8"
14	28.1588.00	Transformer
15	28.1577.00	Circuit board dental light relay
16	43.0080.00	Bracket, circuit board lights
17	004.232.00	Washer, shoulder
18	005.156.00	Screw, pan head 8-32 x 2-3/4", stainless steel
19	28.1566.00	Transformer cover
20	002.103.00	Screw, socket head 6-32 x 3/16", stainless steel
21	28.1531.01	Knuckle cover, white
	28.1531.00	Knuckle cover, surf
22	28.1059.01	Flexarm cover, white
	28.1059.00	Flexarm cover, surf

Item	Part Number	Description
23	003.099.00	Screw, flat head 6-19 x 1/2"
24	75.0008.01	Cap, light arm, white
	75.0008.00	Cap, light arm, surf
25	28.0679.01	Pivot stop, package of 5
26	28.1003.00	Swivel bushing
27	002.165.00	8-32 X 3/4" Button head socket screw
28	041.737.00	24VDC, 30 Watt, 90-240 V power supply assembly
29	28.1907.00	Bracket

6300 and LED (575L) Wall Mounted Light Assembly



6300 and LED (575L) Wall Mounted Light Assembly

Item	Part Number	Description
1	28.1814.00	Pivot arm, light, wall, Preference II, white
	28.1055.00	Pivot arm, light, wall, Preference II, surf
2	28.0566.00	Locking tab
3	28.1092.01	Collar, white
	28.1092.00	Collar, surf
4	002.103.00	Screw, button head socket, 6-32 x 3/16", stainless steel
5	28.1531.01	Cover, knuckle, white
	28.1531.00	Cover, knuckle, surf
6	28.1054.00	Flexarm assembly, wall, Preference, OTC
7	005.012.03	Screw, 10-32 x 3/8", stainless steel
8	004.076.00	Lock washer, external tooth, #10
9	007.002.00	Setscrew, socket cup point, 6-32 x 3/16"
10	28.1565.01	Cover, transformer, white
	28.1565.00	Cover, transformer, surf
11	004.232.00	Washer, shoulder, insulating, #8
12	005.156.00	Screw, 8-32 x 2-3/4" pan head Phillips, stainless steel
13	005.057.00	Bolt 1/4-20 x 30 mm
14	28.1588.00	Transformer, 6300 light, OTC
15	28.1577.00	Dental light circuit board
16	041.691.00	Stand-off, circuit board, plastic, 1/4" high, 0.10"
17	004.071.00	Washer, flat, nylatron, 1.5 ID

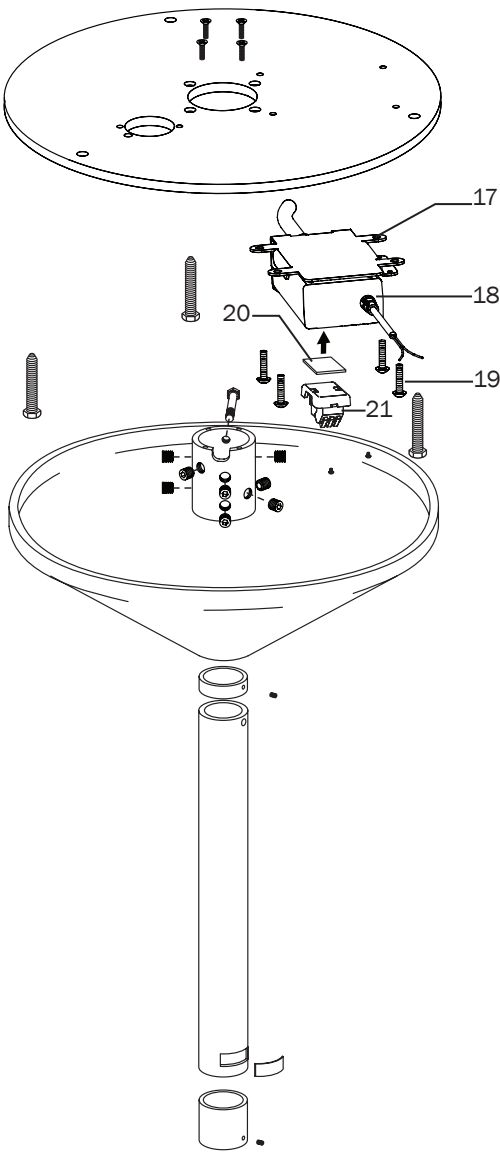
† Indicates that the individual part is not available for sale

Item	Part Number	Description
18	28.0877.00	Backboard, dental light, wall
19	028.022.00	Cap, bolt head
20	003.065.00	Screw, hex head, lag, 1/4" x 3" zinc
21	004.131.00	Washer, flange, lag bolt cap, 0.25 ID
22	004.141.00	Washer, flat, steel, 0.261 ID
23	018.069.00 †	Plug, hole, 7/8" diameter
24	28.0758.00	Circuit breaker, 10 Amp
25	018.047.00	Bushing, strain relief, 0.325 - 0.36" diameter, 0.125
26	018.042.00	Bushing, snap, 5/8" diameter, black
27	003.099.00	Screw, flat head Phillips, 6-19 x 1/2"
28	75.0008.01	Cap, light arm, front, white
	75.0008.00	Cap, light arm, front, surf
29	28.1064.01	Knuckle, 12", dental light end, white
	28.1064.00	Knuckle, 12", dental light end, surf
30	28.0679.01	Slug, pivot stop, dental light, package of 5
31	28.1003.00	Bushing, swivel, light switch
32	002.165.00	8-32 X 3/4" Button head socket screw
33	041.737.00	24VDC, 30 Watt, 90-240 V power supply assembly
34	28.1907.00	Bracket
35	060.035.00	Double sided foam tape
36	43.0236.00	LED CAN Adaptor board

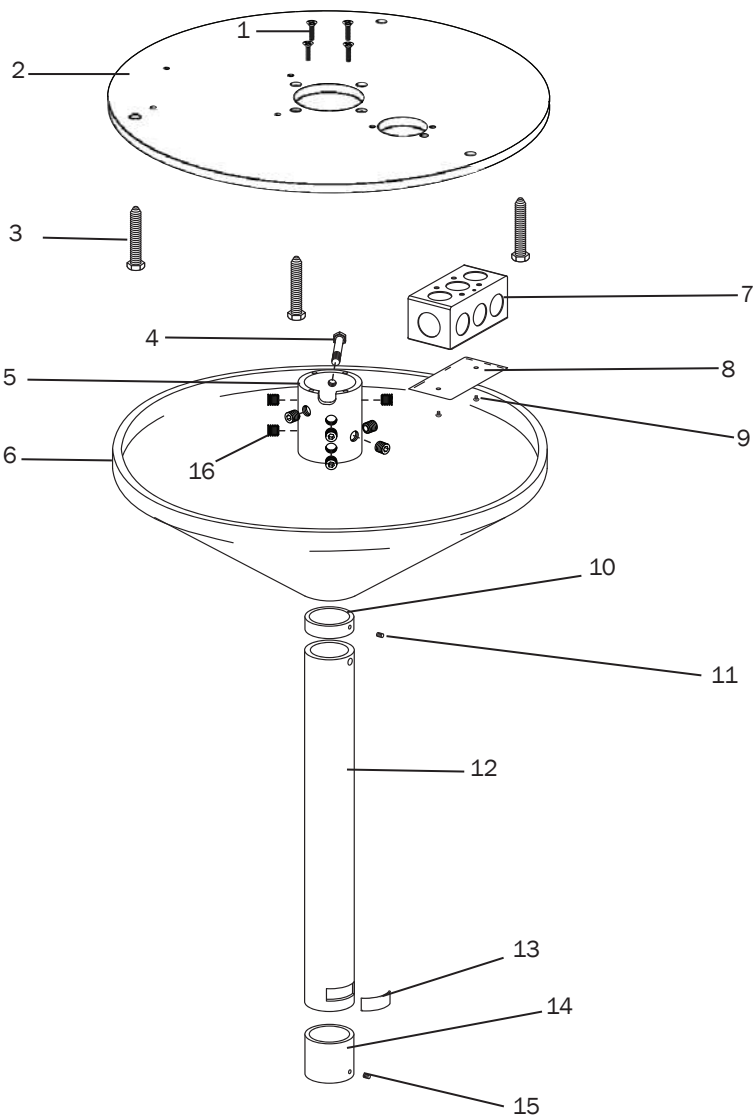


6300 and LED (576L) Ceiling Mounted Light Assembly (Upper)

LED (576L) Light



6300 Light

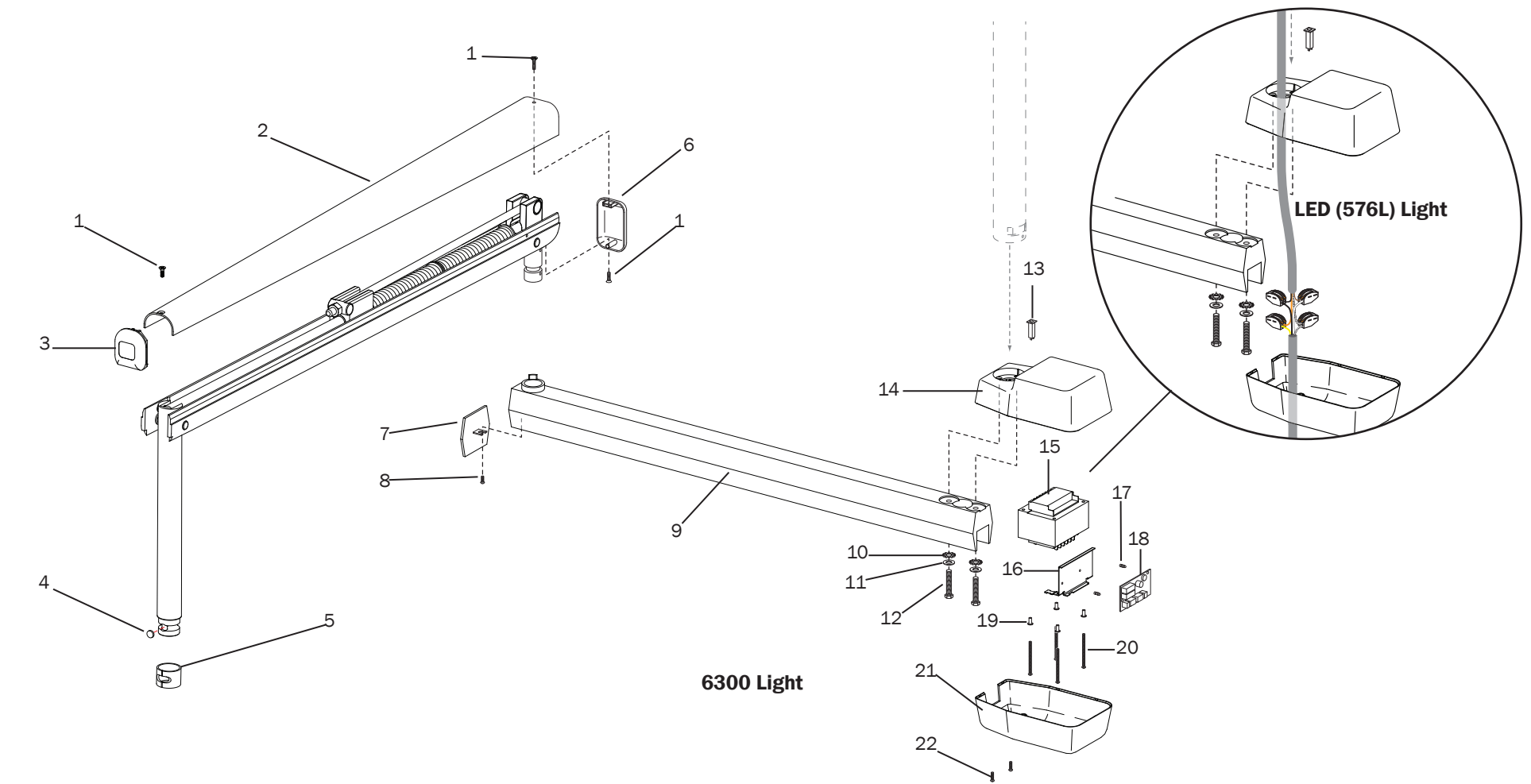


6300 and LED (576L) Ceiling Mounted Light Assembly (Upper)

Item	Part Number	Description
1	002.085.00	Screw, flat head socket 1/4-20 x 1/2"
2	28.0573.00	Mounting plate, ceiling
3	003.065.00	Screw hex head 1/4 x 3"
4	001.128.00	Screw, hex head screw 1/4-20 x 2 3/4"
5	28.0572.00	Ceiling mount collar
6	28.0571.04 28.0571.03	Cover, ceiling mount dental light, white Cover, ceiling mount dental light, surf
7	041.333.00	Junction box 4" x 2-1/8 x 1-1/2"
8	041.332.00	Junction box cover
9	002.094.02	Screw, button head socket, 10-32 x 1/4" stainless steel
10	28.0569.03 28.0569.02	Stop ring, white Stop ring, surf
11	007.071.00	Setscrew, socket, 6-32 x 1/4"

Item	Part Number	Description
12	28.1810.00 28.1052.00	Ceiling mount light post 17", white Ceiling mount light post 17", surf
	28.1810.01 28.1052.01	Ceiling mount light post 23", white Ceiling mount light post 23", surf
	28.1810.02 28.1052.02	Ceiling mount light post 29", white Ceiling mount light post 29", surf
	28.1810.03 28.1052.03	Ceiling mount light post 35", white Ceiling mount light post 35", surf
	28.1810.04 28.1052.04	Ceiling mount light post 41", white Ceiling mount light post 41", surf
	28.1810.05 28.1052.05	Ceiling mount light post 47", white Ceiling mount light post 47", surf
	28.1810.06 28.1052.06	Ceiling mount light post 53", white Ceiling mount light post 53", surf
	28.1810.07 28.1052.07	Ceiling mount light post 59", white Ceiling mount light post 59", surf
	28.1810.08 28.1052.08	Ceiling mount light post 65", white Ceiling mount light post 65", surf
13	28.0566.00	Locking tab
14	28.1092.01 28.1092.00	Collar, white Collar, surf
15	007.002.00	Setscrew, socket cup point, 6-32 x 3/16"
16	007.005.00	Setscrew, 3/8-16 x 5/16"
17	28.1907.00	Bracket
18	041.737.00	24VDC, 30 Watt, 90-240 V power supply assembly
19	002.094.02	10-32 X 1/4" Button head socket screws
20	060.035.00	Double sided foam tape
21	43.0236.00	LED CAN Adaptor board

6300 and LED (576L) and Ceiling Mounted Light Assembly (Lower)



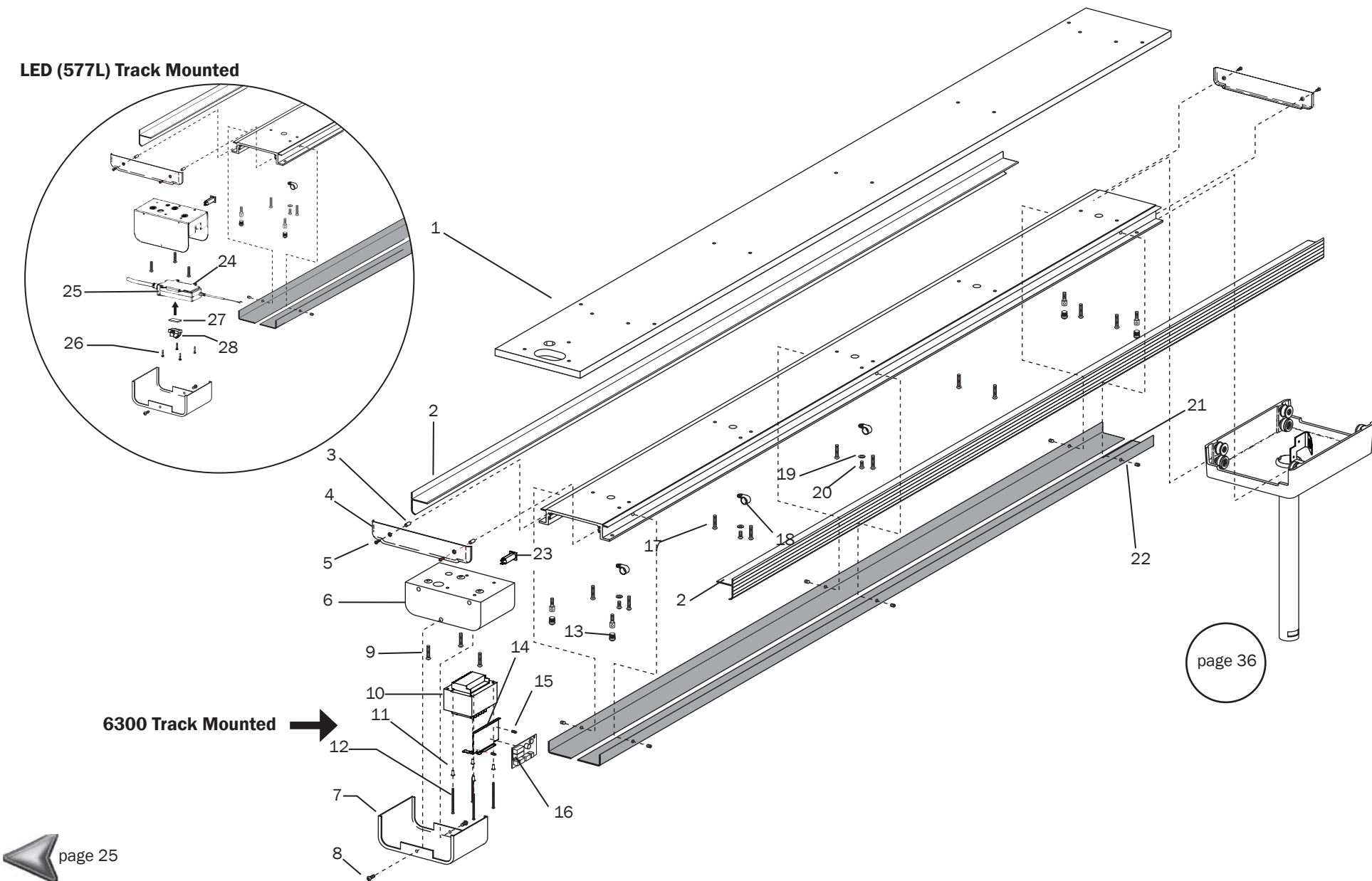
6300 and LED (576L) Ceiling Mounted Light Assembly (Lower)

Item	Part Number	Description
1	003.099.00	Screw, flat head Phillips 6-19 x 1/2"
2	28.1027.05 28.1027.00	Cover, light arm, white Cover, light arm, surf
3	75.0008.01 75.0008.00	Cap, light arm, front, white Cap, light arm, front, surf
4	28.0679.01	Pivot stop, package of 5
5	28.1003.00	Bushing, swivel, light switch
6	75.0009.01 75.0009.00	Cap, light arm, post end, white Cap, light arm, post end, surf
7	28.1045.01 28.1045.00	End cap fixed arm, white End cap fixed arm, surf
8	001.073.00	Screw, pan head SEMs Phillips, 6-32 x 1/4"
9	28.0647.03 28.0647.02	Rigid arm, dental light, white Rigid arm, dental light, surf
10	004.058.00	Washer, lock, internal/external tooth, 1/4"
11	004.141.00	Washer, flat, steel, 0.261 ID
12	005.083.00	Screw, hex head, grade 8, 1/4-20 x 2-1/2"
13	28.0758.00	Circuit breaker, 10 Amp
14	28.1552.01 † 28.1552.00 †	Housing, base, transformer, cast, white Housing, base, transformer, cast, surf
15	28.1588.00	Transformer
16	43.0080.00	Bracket
17	041.691.00	Stand-off, circuit board, plastic, 1/4" high, 0.10"
18	28.1577.00	Dental light circuit board
19	004.232.00	Washer, shoulder, insulating, #8
20	005.156.00	Screw, 8-32 x 2-3/4", pan head Phillips, stainless steel
21	28.1553.01 28.1553.00	Housing, cover, transformer, cast, white Housing, cover, transformer, cast, surf
22	005.106.00	Screw, 10-32 x 2-1/2" socket head

† Indicates that the individual part is not available for sale



6300 and LED (577L) Track Mounted Light Assembly

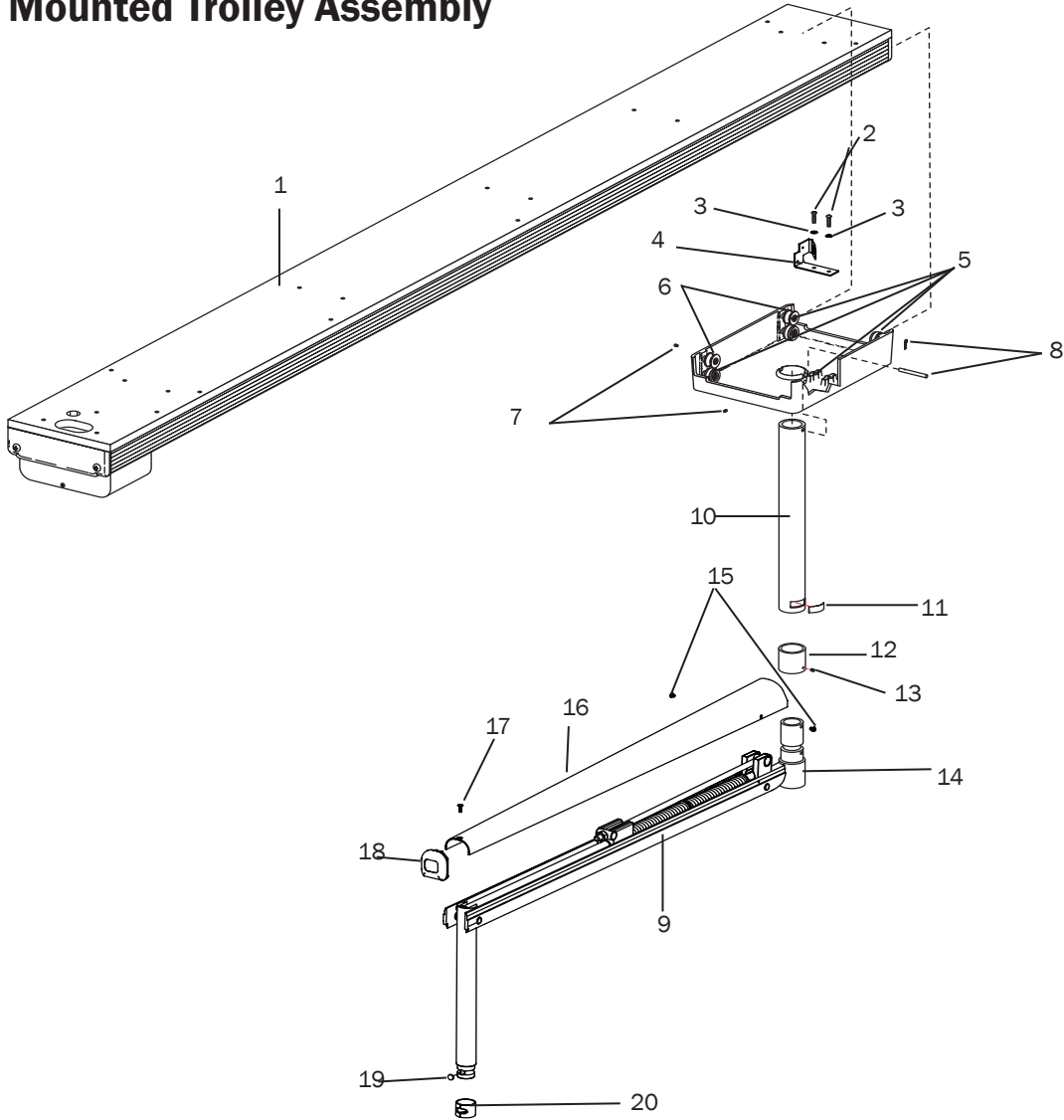


6300 and LED (577L) and Track Mounted Light Assembly

Item	Part Number	Description	Item	Part Number	Description
1	28.1571.00 †	Pallet assembly, ceiling track mount	15	041.691.00	Stand-off
2	28.1083.01 28.1083.00	Trim cover, outside, white Trim cover, outside, surf	16	28.1577.00	Dental light circuit board
3	28.0793.00	Spacer, 0.198 ID x 0.437 OD x 0.4" long	17	005.109.02	Screw, button head 1/4-20 x 1"
4	28.1077.01 28.1077.00	End cap, white End cap, surf	18	025.024.00	Cable clamp
5	003.047.00	Screw, pan head Phillips, metal, #10 x 3/4"	19	004.012.00	Washer, flat, steel plated, 0.156 ID
6	28.1570.01 28.1570.00	Housing, transformer, white Housing, transformer, surf	20	003.014.00	Screw, pan head, Phillips #6
7	28.1568.01 28.1568.00	Cover, transformer, white Cover, transformer, surf	21	28.1084.01 28.1084.00	Trim cover, inside track, white Trim cover, inside track, surf
8	002.103.00	Screw, button head socket, 6-32 x 3/16" stainless steel	22	007.003.00	Setscrew, socket cup point 10-32 x 3/16"
9	005.002.02	Screw, button head 1/4-20 x 5/8"	23	28.0758.00	Circuit breaker, 10 Amp
10	28.1588.00	Transformer	24	28.1907.00	Bracket
11	004.232.00	Washer, shoulder	25	041.737.00	24 VDC, 30 Watt, 90-240 V power supply assembly
12	005.156.00	Screw, pan head Phillips, 8-32 x 2-3/4" stainless steel	26	002.165.00	Button head socket screw, 8-32 X 3/4
13	028.008.00	Plug/cap, 1/2" OD x 1/4" ID	27	060.035.00	Double sided foam tape
14	43.0080.00	Bracket	28	43.0236.00	LED CAN Adaptor board

† Indicates that the individual part is not available for sale

6300 and LED (577L) Track Mounted Trolley Assembly



6300 and LED (577L) Track Mounted Trolley Assembly

Item	Part Number	Description	Replacement Kit
1	28.1079.01	Track assembly, white	
	28.1079.00	Track assembly, surf	
2	001.004.00	Screw, pan head 10-32 x 3/8", stainless steel	
3	004.040.00	Lock washer	
4	28.0667.00	Bracket, electric connector	
5	28.0790.00	Crowned wheel assembly	
6	28.0789.00	Grooved wheel assembly	
7	007.042.00	Setscrew, 1/4-20 x 3/8"	
8	99.0733.00	Cross pin kit	
9	28.1596.00	Flexarm assembly, surf	
	28.1596.01	Flexarm assembly, white	
10	28.1817.00	15" post, white	
	28.1085.00	15" post, surf	
	28.1817.01	21" post, white	
	28.1085.01	21" post, surf	
	28.1817.02	27" post, white	
	28.1085.02	27" post, surf	
	28.1817.03	33" post, white	
	28.1085.03	33" post, surf	
	28.1817.04	39" post, white	
	28.1085.04	39" post, surf	
11	28.0566.00	Locking tab	
12	28.1092.01	Retaining collar, white	
	28.1092.00	Retaining collar, surf	
13	007.002.00	Setscrew, 6-32 x 3/16"	
14	28.1572.01 †	Mounting hub, white	28.1596.00, Flexarm assembly, track light, white 28.1596.01, Flexarm assembly, track light, surf
	28.1572.00 †	Mounting hub, surf	
15	002.103.00	Socket head screw 6-32 x 3/16", stainless steel	
16	28.1059.01	Flexarm cover, white	
	28.1059.00	Flexarm cover, surf	
17	003.099.00	Screw, flat head 6-19 x 1/2"	
18	75.0008.01	Cap, light arm, white	
	75.0008.00	Cap, light arm, surf	
19	28.0679.01	Pivot stop, package of 5	
20	28.1003.00	Swivel bushing	

† Indicates that the individual part is not available for sale

Monitor Mounts Illustrated Parts Breakdown



300 Mounted

page 40

382 Front Mounted

page 42

531 Front Mounted
(Obsolete)

page 46



482 Monitor Mount

page 44



584 Cabinet Mounted

page 48



585 Wall Mounted

page 50



581 Support Side Mounted
(Formerly Model 561)

page 54

Support Side Tray (581)

page 56



586 Ceiling Mounted

page 52

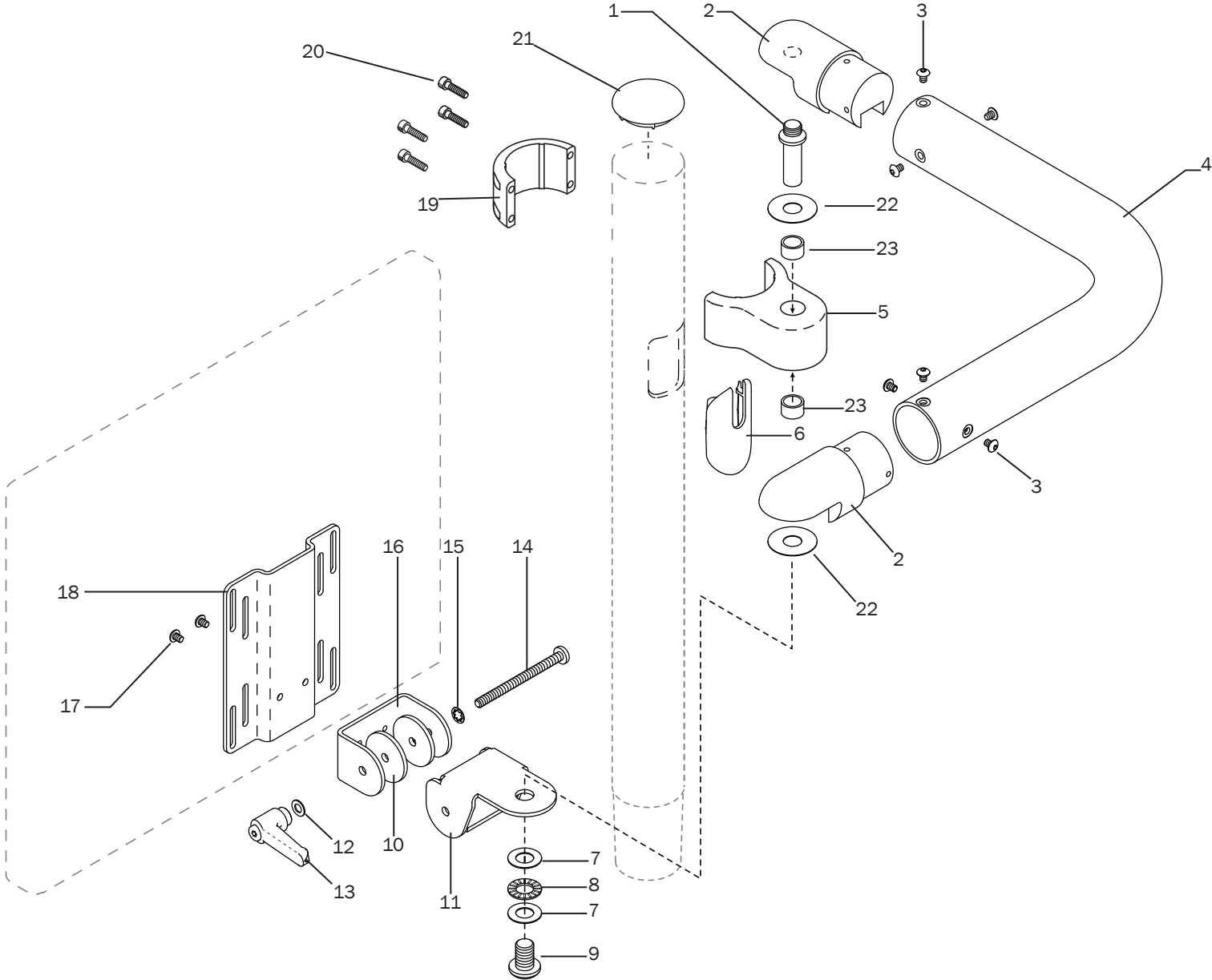


587 Cabinet Track Mounted

page 62



300 Front Mounted

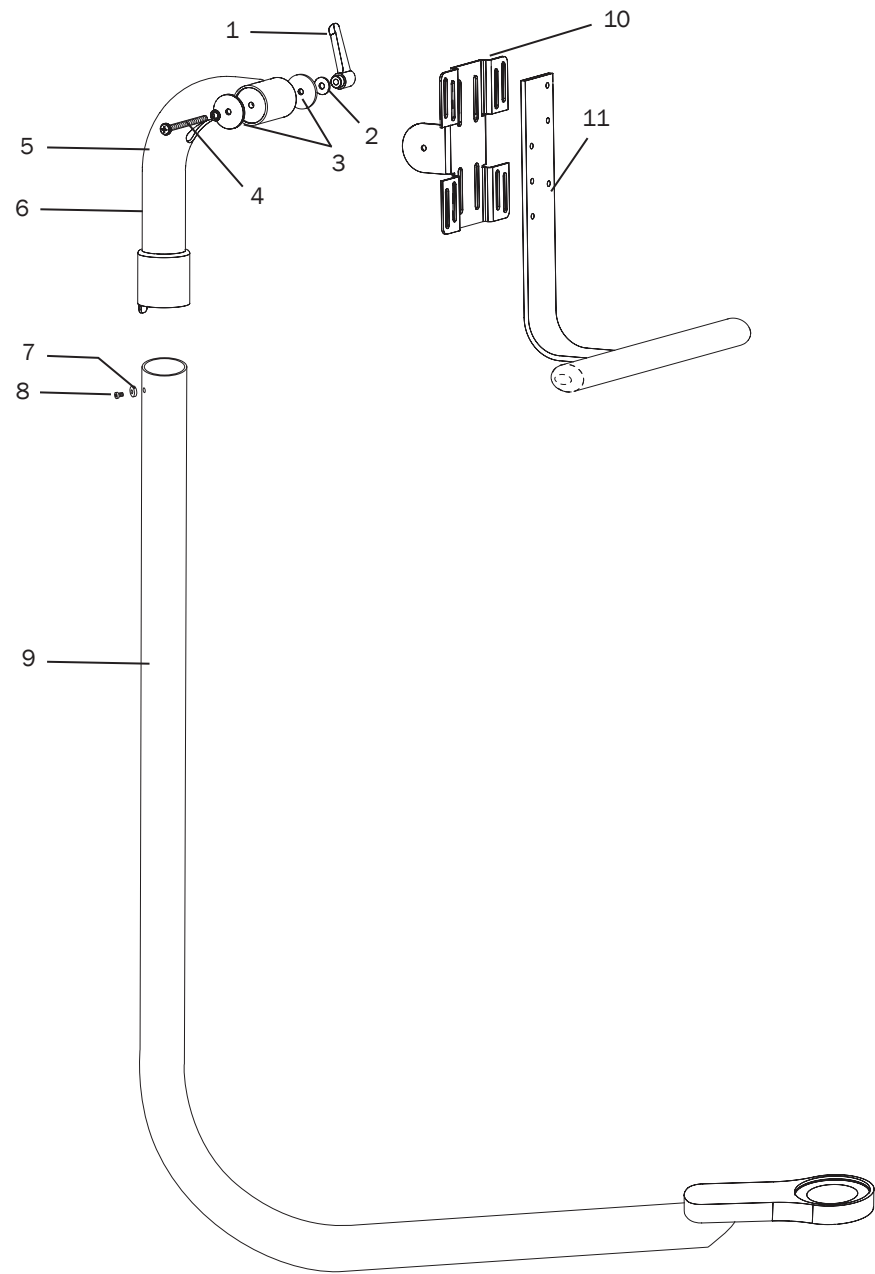


300 Front Mounted

Item	Part Number	Description	Replacement Kit
1	77.0965.00 †	Monitor arm pivot	90.1214.00 Monitor mount pivot (includes items 1, 2)
2	77.0967.00 †	Monitor tube support	90.1214.00 Monitor mount pivot (includes items 1, 2)
3	002.094.02	Screw, button head socket, 10-32 x 1/4" stainless steel	
4	77.0966.00 †	Monitor tube support	
5	77.0961.00 †	Mount monitor	77.0960.00 Monitor post mount (includes items 5, 23)
6	75.2251.00	Internal post plug	
7	004.136.00	Washer, thrust bearing, 0.500 ID	
8	016.033.00	Bearing, thrust needle, 0.500 ID	
9	005.160.00	Screw, button head socket, 1/2-13 x 3/4"	
10	40.0084.00	Brake disk	
11	77.0968.00 †	Vesa mounting bracket	
12	004.032.00	Brass washer	
13	025.106.00	Adjustment lever	
14	001.234.00	Phillips head screw, 3.25 large	
15	004.138.00	Internal tooth washer lock	
16	77.0969.00 †	Monitor mounting pivot bracket	
17	002.094.02	Screw, button head socket, 10-32 x 1/4", stainless steel	
18	77.0970.00	Vesa bracket	
19	77.0962.00	Monitor mount cap	
20	002.073.00	Socket head screw, 10-32 x 3/4"	
21	77.0842.00	Cap, 2" post (If a dental light is installed, this part is not used)	
22	004.034.00	Flat Nylatron washer	
23	016.006.00	Bearing	77.0960.00 Monitor post mount (includes items 5, 23)

† Indicates that the individual part is not available for sale

382 Front Mounted

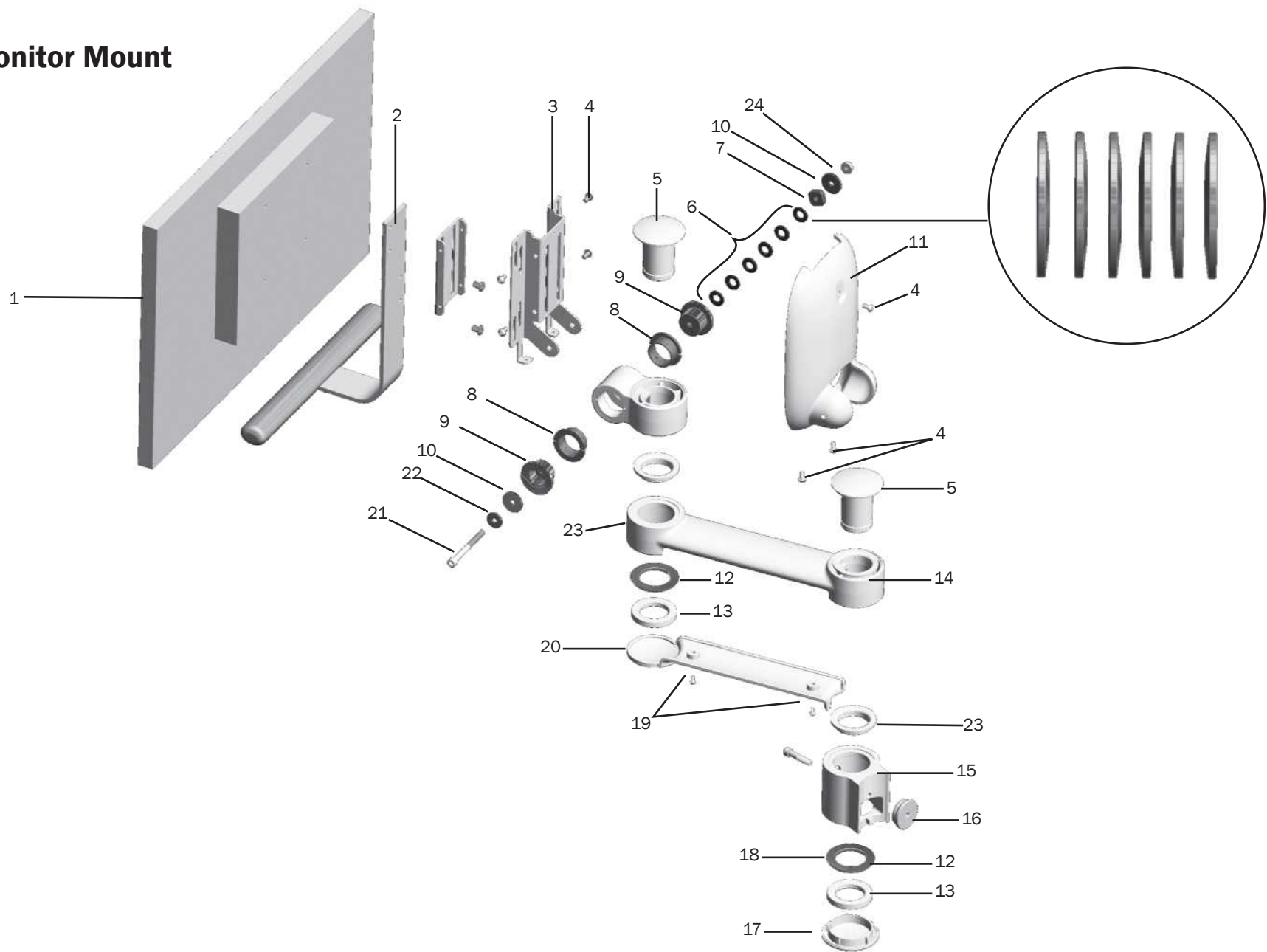


382 Front Mounted

Item	Part Number	Description
1	025.106.00	Lever
2	004.032.00	Washer
3	40.0084.00	Brake disc
4	004.138.00	Washer
5	001.234.00	Screw
6	35.1726.01	Weldment
7	35.1392.00	Spacer
8	005.132.00	Screw
9	77.1156.00	Radius arm weldment
10	77.1328.0	Mounting bracket
11	77.1308.00	Handle assembly



482 Monitor Mount

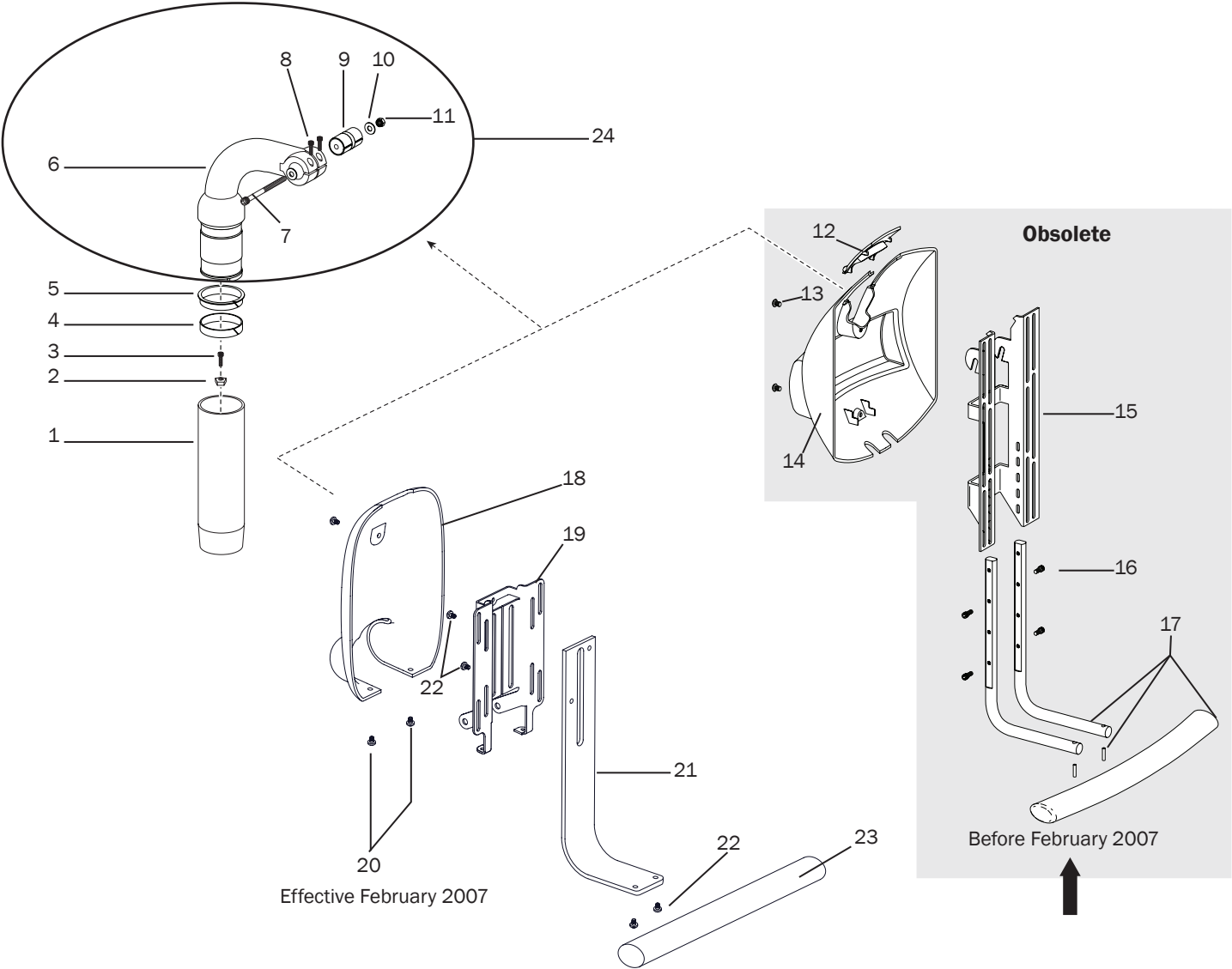


482 Monitor Mount

Item	Part Number	Description
1	-	Monitor
2	77.1308.00	Handle assembly, gray 3
3	77.1302.00	Monitor mount bracket
4	005.012.03	Button head socket screw, 10-32 X 3/8
5	77.1264.00	Swivel tube
6	004.019.00	Washer
7	006.408.00	Square special nut, 1/4 - 20
8	016.179.00	Bushing
9	77.1311.00	Bushing
10	004.156.00	Washer
11	77.0631.01	Cover
12	016.178.00	Bearing
13	77.1263.00	Spanner nut
14	77.1309.00	Monitor mount arm
15	77.1260.00	Post mount
16	77.1270.00	Clamp
17	77.1269.00	Cap
18	001.093.00	Socket head screw, 1/4-20 X 1-1/4
19	001.103.00	Button Head Screw, 6-32 X 5/16
20	77.1267.00	Arm cover
21	002.119.00	Socket head screw, 1/4-20 x 2-3/4
22	004.141.00	Flat steel washer
23	77.1265.00	Bushing, flanged, 1.70 ODX 1 .45ID
24	006.089.00	Lock nut



531 Front Mounted (Obsolete)



NOTE: These assemblies require replacement. Some individual parts may be replaced. However, if the cover requires replacement the assembly needs to be replaced with the new monitor mount assembly.

Before February 2007



531 Front Mounted (Obsolete)

Item	Part Number	Description
1	77.0259.01 † 77.0259.00 †	Extension bar, adapter, white Extension bar, adapter, surf
2	77.0300.00	Rotation limiter
3	001.088.00	Screw, rotation stop, 10-32 x 5/8" stainless steel
4	77.0103.00	Lower bearing
5	77.0102.01 77.0102.00	Upper bearing, white Upper bearing, surf
6	77.0114.02 † 77.0114.01 †	Support arm, monitor mount, white Support arm, monitor mount, surf
7	002.119.00	Screw, socket head, 1/4-20 x 2-3/4" stainless steel
8	001.088.00	Screw, socket head, 10-32 x 5/8" stainless steel
9	77.0497.00	Clutch assembly kit (includes 7,10 and 11)
10	004.141.00	Flat washer, .261 ID
11	006.052.00	Locking nut, 1/4-20 x 7/16" x 5/16"
12	77.0213.00 OBS	Small cover, surf 4

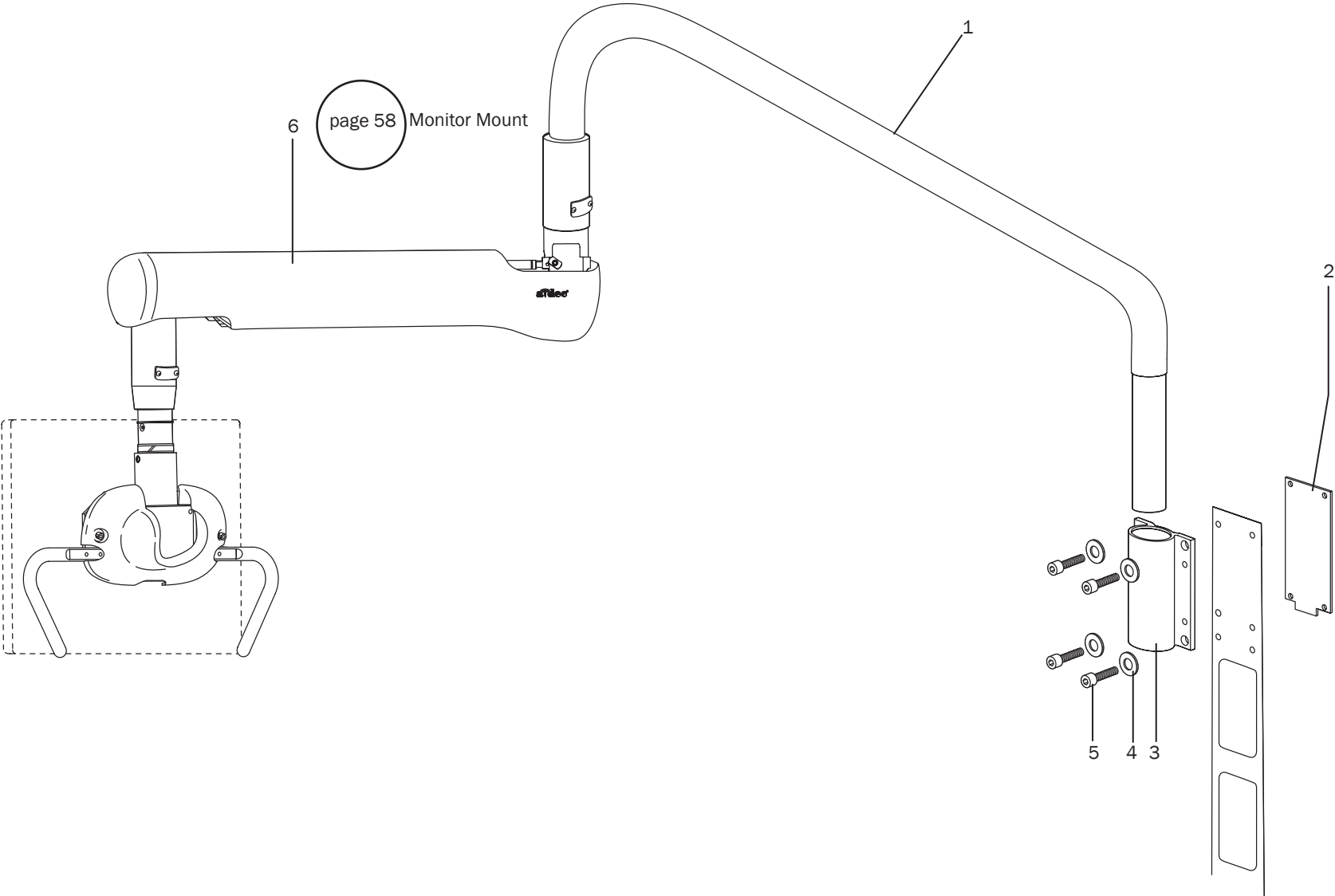
† Indicates service part is not available for sale

OBS Indicates that the individual part is obsolete. Replace with 77.0848.01/77.0848.00 (item 24)

* Includes items 6 - 11 (the clutch is pressed into the arm)

Item	Part Number	Description
13	002.094.02	Screw, button head, 10-32 x 1/4" stainless steel
14	77.0026.00 OBS	Monitor mount cover (before February 2007)
15	77.0112.00 OBS	Mounting bracket (before February 2007)
16	002.130.00	Screw, socket head, 10-32 x 3/8"
17	77.0498.00	Handle bracket kit (before February 2007)
18	77.0631.01 77.0631.00	Monitor mount cover (effective February 2007), gray Monitor mount cover (effective February 2007), surf
19	77.0653.00	Mounting bracket, no power supply (effective February 2007)
20	005.012.03	Screw, socket head, 10-32 x 3/8" stainless steel
21	77.0629.01 77.0629.00	Handle arm (effective February 2007), gray Handle arm (effective February 2007), surf
22	005.143.00	Screw, 1/4 20 x 3/8", button head
23	77.0630.01 77.0630.00	Handle, straight (effective February 2007), gray Handle, straight (effective February 2007), surf
24	77.0848.01* 77.0848.00*	Arm and clutch assembly, white Arm and clutch assembly, surf

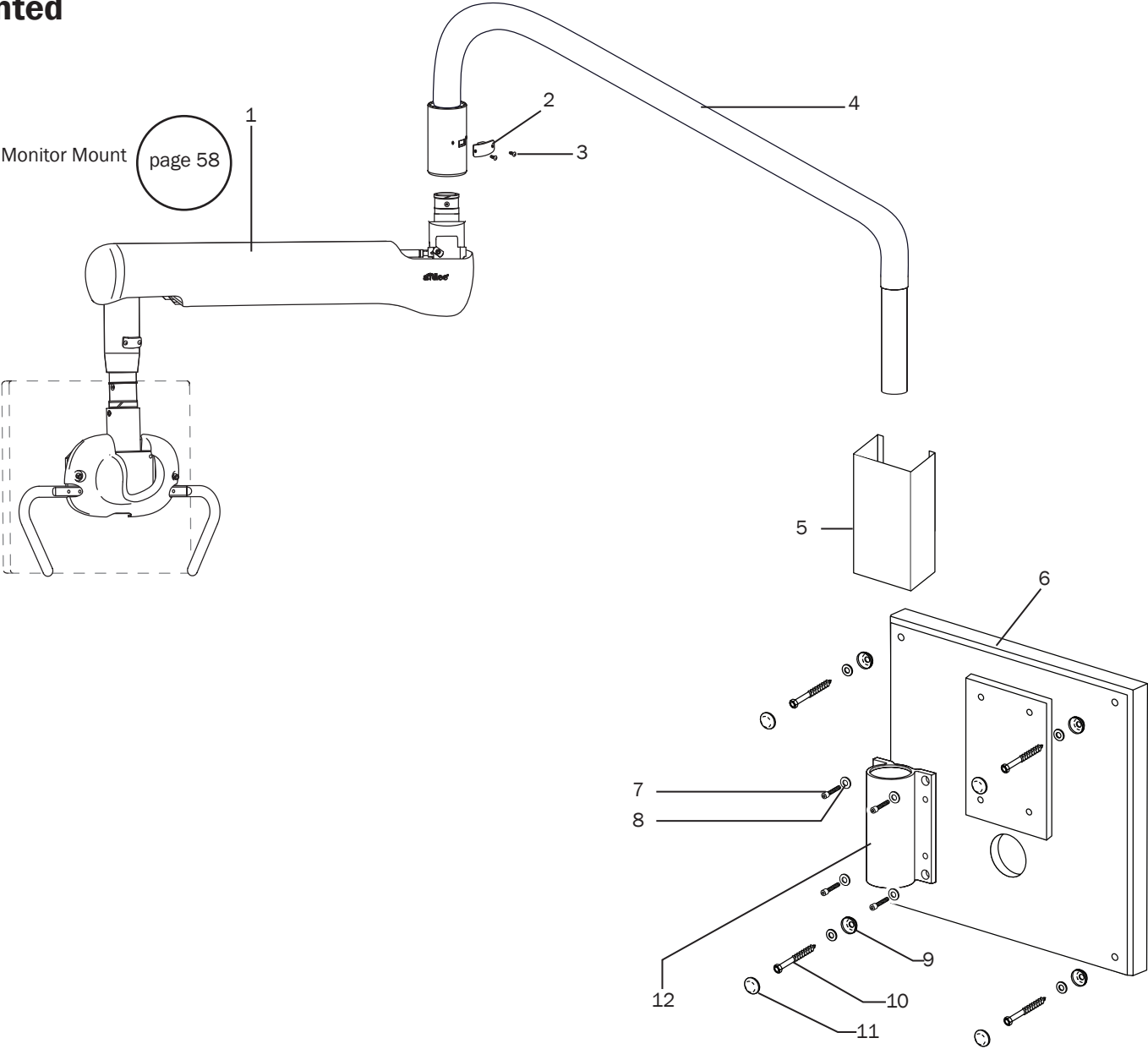
584 Cabinet Mounted



584 Cabinet Mounted

Item	Part Number	Description
1	77.0656.01 77.0656.00	Rigid arm, large, white Rigid arm, large, surf
2	77.0765.00	Back plate
3	77.0839.00	Arm mount
4	004.141.00	Washer
5	001.093.00	Screw, 1/4-20 x 1-1/4" socket head, stainless steel
6	n/a	Monitor mount assembly

585 Wall Mounted

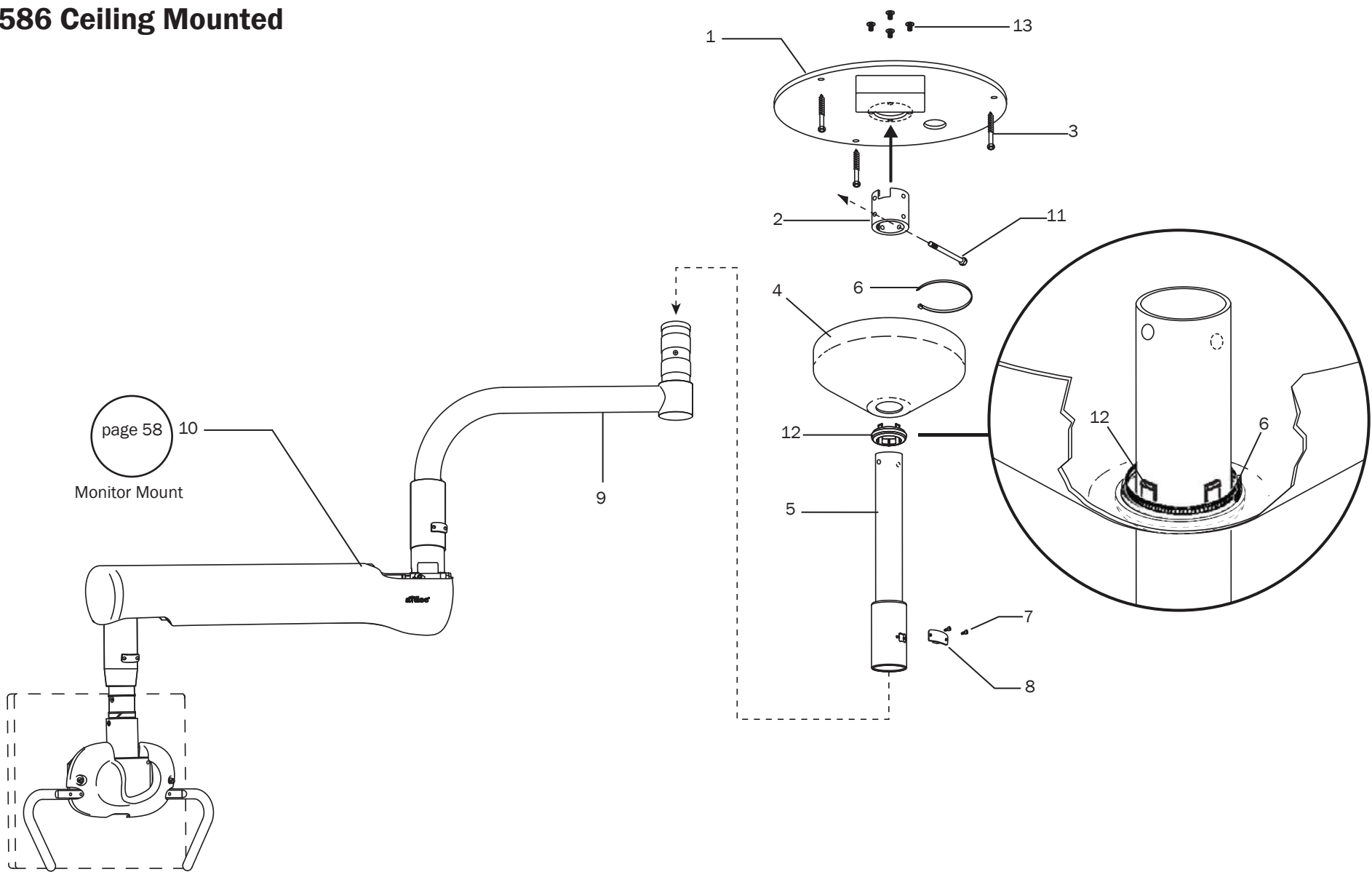


585 Wall Mounted

Item	Part Number	Description
1	n/a	Monitor mount assembly
2	77.0660.02 77.0660.01	Monitor mount stop puck, white Monitor mount stop puck, surf
3	005.138.00	Screw, button head socket, 10-32 x 5/16" stainless steel
4	77.0656.01 77.0656.00	Rigid arm, large, white Rigid arm, large, surf
5	77.0651.01 77.0651.00	Mount cover, white Mount cover, surf
6	77.0649.00	Wall mount board
7	002.080.01	Screw, 1/4-20 x 3/4" socket head
8	004.141.00	Washer
9	004.131.00	Lag bolt cap flange washer
10	003.065.00	Screw, hex head lag, 1/4 x 3" zinc
11	028.022.00	Cap, bold head
12	77.0659.00	Monitor mount



586 Ceiling Mounted

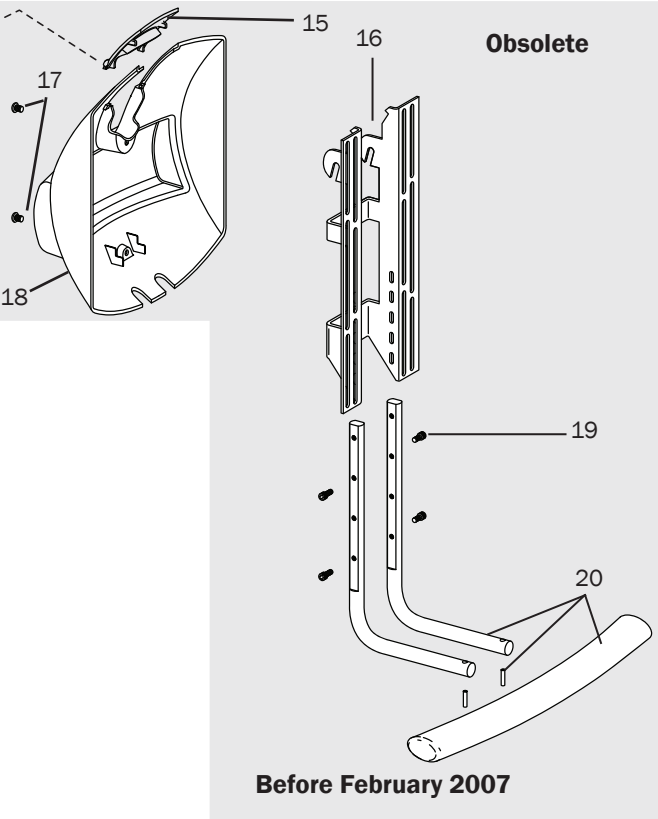
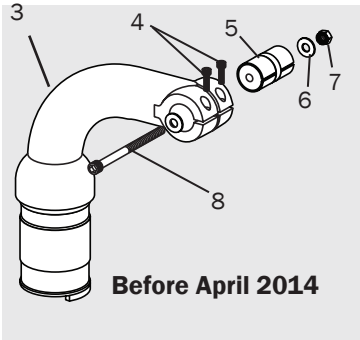
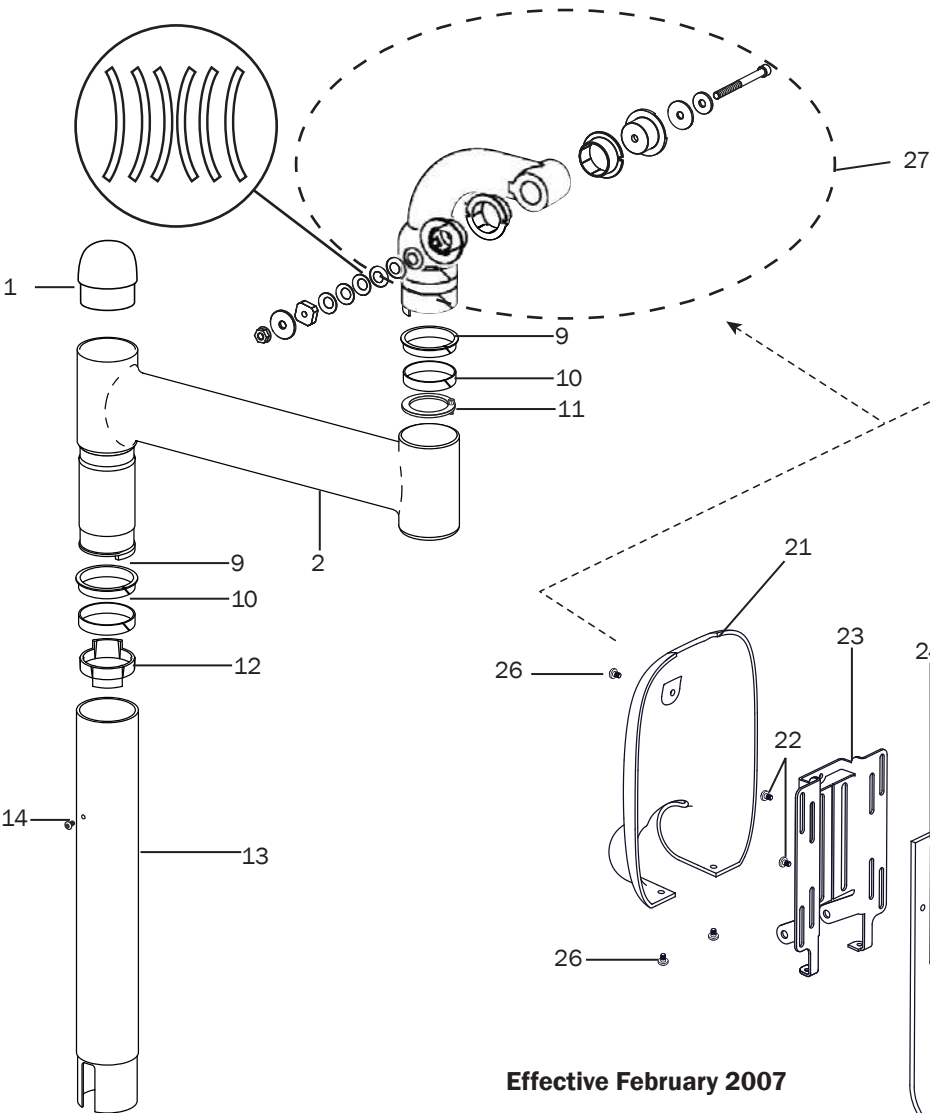


586 Ceiling Mounted

Item	Part Number	Description
1	28.0573.00	Monitor mount ceiling plate
2	28.0572.00	Collar
3	003.065.00	Lag screw, hex head, 1/4 x 3" zinc
4	77.0717.01 77.0717.00	Ceiling cover, White Ceiling cover, Surf
5	77.1203.00 77.1203.01 77.1203.02 77.1203.03 77.1204.00 77.1204.01 77.1204.02 77.1204.03	Ceiling post, white - 9 ft Ceiling post, white - 9.5 ft Ceiling post, white - 10 ft Ceiling post, white - 10.5 ft Ceiling post, surf - 9 ft Ceiling post, surf - 9.5 ft Ceiling post, surf - 10 ft Ceiling post, surf - 10.5 ft
6	025.003.00	Cable ties (2)
7	005.138.00	Screw, button head socket, 10-32 x 5/16", stainless steel
8	77.0660.02 77.0660.01	Monitor mount stop puck, white Monitor mount stop puck, surf
9	77.0664.01 77.0664.00	Rigid arm, white Rigid arm, surf
10	n/a	Monitor mount assembly
11	001.128.00	Hex head screw, 1/4-20 x 2-3/4"
12	77.0780.00	Retainer clg cover
13	002.085.00	1/4-20 X 1/2" Flat head socket screw

581 Support Side Mounted (Formerly Model 561)

Effective April 2014



581 Support Side Mounted (formerly 561 Monitor Mount)

Item	Part Number	Description
1	28.1501.01	Cap, white
	28.1501.00	Cap, surf
2	77.0117.02	Rigid arm, white
	77.0117.01	Rigid arm, surf
3	77.0114.02 †	Support arm, white
	77.0114.01 †	Support arm, surf
4	001.088.00	Screw, adjustment 10-32 x 5/8", stainless steel
5	77.0497.00	Clutch assembly kit (includes 7, 11 and 12)
6	004.141.00	Flat washer 0.261 ID
7	006.052.00	Locking nut, 1/4-20 x 7/16" x 5/16"
8	002.119.00	Screw, socket head, 1/4-20 x 2-3/4" stainless steel
9	77.0102.01	Bearing, upper, white
	77.0102.00	Bearing, upper, surf
10	77.0103.00	Bearing, lower
11	77.0652.00	Rotation stop, support arm
12	77.0201.00	Rotation stop, monitor mount
13	77.0199.01	Monitor post, white
	77.0199.00	Monitor post, surf

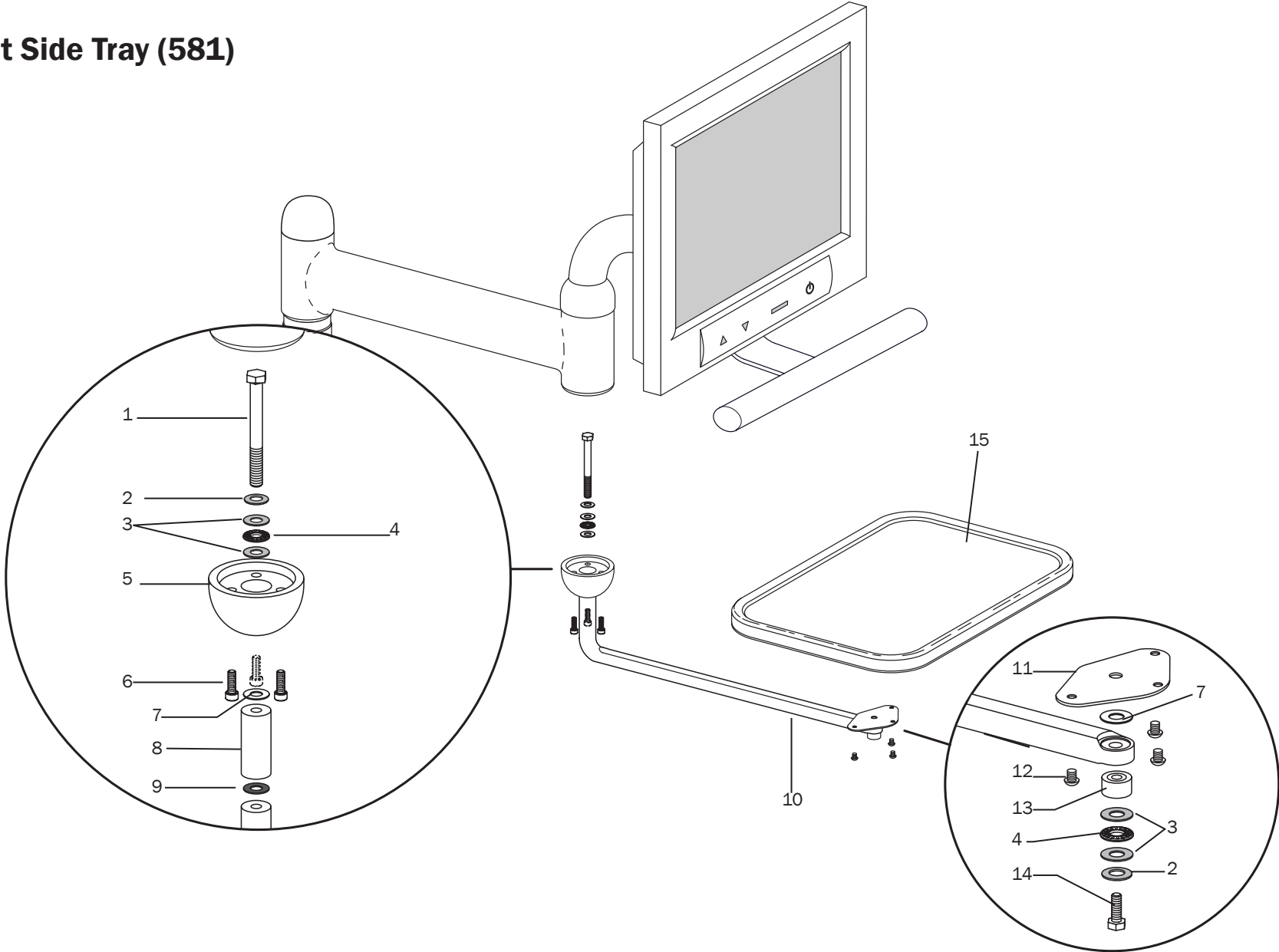
Item	Part Number	Description
14	002.130.00	Screw, 10-32 x 3/8"
15	77.0213.00 OBS	Small cover, surf 4 (before February 2007)
16	77.0112.00 OBS	Mounting bracket
17	002.094.02	Screw 10-32 x 1/4", stainless steel
18	77.0026.00 OBS	Monitor mount cover (before February 2007)
19	002.130.00	Screw, socket head, 10-32 x 3/8"
20	77.0498.00	Handle bracket kit (before February 2007)
21	77.0631.01	Monitor mount cover, white (effective February 2007)
	77.0631.00	Monitor mount cover, surf (effective February 2007)
22	005.143.00	Screws 1/4 20 x 3/8"
23	77.0653.00	Mounting bracket, no power supply (effective February 2007)
24	77.0629.01	Handle arm, gray (effective February 2007)
	77.0629.00	Handle arm, surf (effective February 2007)
25	77.0630.01	Handle, straight, gray (effective February 2007)
	77.0630.00	Handle, straight, surf (effective February 2007)
26	005.012.03	Screw, button head, 10-32 x 3/8" stainless steel
27	77.0848.01 *	Arm and clutch assembly, white
	77.0848.00 *	Arm and clutch assembly, surf

† Indicates that the individual part is not available for sale

OBS Indicates that the part is obsolete. Replace with assembly 77.0848.01/77.0848.00 (item 27)

* Includes items 3 - 8

Support Side Tray (581)



Support Side Tray, Standard and Large (581)

p/n: 77.0350.00 (Standard, Surf), 77.0350.01 (Standard, White), 77.0351.00 (Large, Surf), 77.0351.01 (Large, White)

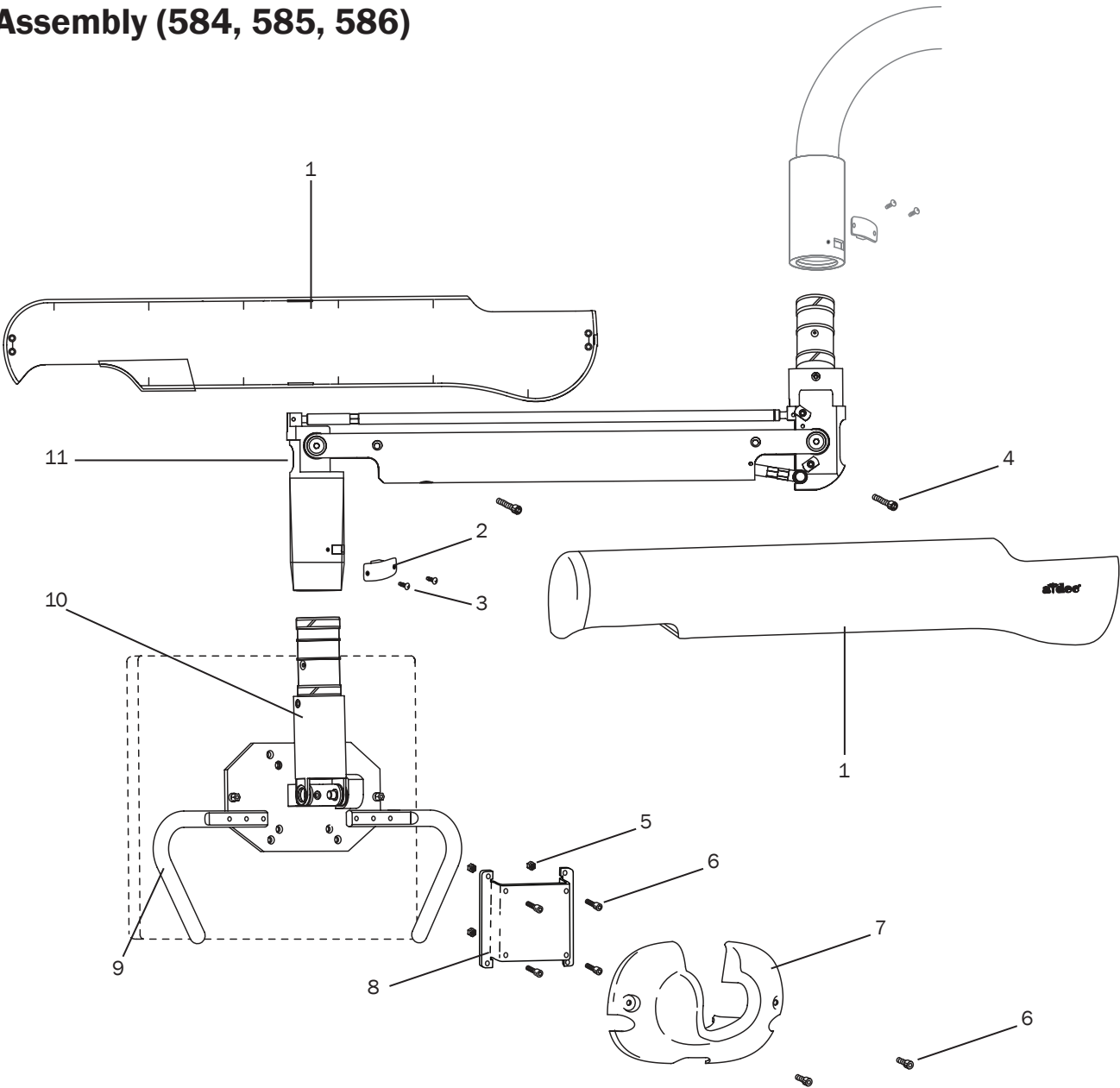
Item	Part Number	Description	Replacement Kit
1	005.157.00	Screw, 3/8-16 x 4"	75.0017.01, 75.0017.00
2	004.019.00	Washer, spring 0.384 ID	75.0017.01, 75.0017.00
3	004.172.00	Washer, thrust 0.375 ID	75.0017.01, 75.0017.00
4	016.102.00	Thrust bearing, 0.375 ID	75.0017.01, 75.0017.00
5	77.0365.01 † 77.0365.00 †	Hub, white Hub, surf	75.0017.01, 75.0017.00
6	002.112.00	Screw, 10-32 x 7/8"	75.0017.01, 75.0017.00
7	004.242.00	Washer, flat 0.387 ID	75.0017.01, 75.0017.00
8	77.0197.01 77.0197.00	Extender arm, .387 ID, white Extender arm, .387 ID, surf	75.0017.01, 75.0017.00
9	004.021.00	Washer, flat, fiber 0.375 ID	75.0017.01, 75.0017.00
10	77.0189.01 77.0189.00	Arm, tray holder, white Arm, tray holder, surf	75.0017.01, 75.0017.00
11	77.0190.01 77.0190.00	Bracket, white Bracket, surf	75.0017.01, 75.0017.00
12	005.012.03	Screw, 10-32 x 3/8", stainless steel	75.0017.01, 75.0017.00
13	77.0198.01 77.0198.00	Cover, white Cover, surf	75.0017.01, 75.0017.00
14	002.023.01	Screw hex head, 3/8 - 1 x 1/4 Hex HD screw	75.0017.01, 75.0017.00
15	75.0017.01 * 75.0017.00 *	Standard tray holder, white Standard tray holder, surf	75.0017.01, 75.0017.00

† Indicates that the individual part is not available for sale

* Includes items 1-15

Replacement Kit	Description
75.0017.01 75.0017.00	Standard tray holder, white (includes items 1 - 15) Standard tray holder, surf (includes items 1 - 15)

Monitor Mount Assembly (584, 585, 586)



▲ Cabinet Mount
page 48


▲ Ceiling Mount
page 52

▲ Wall Mount
page 50

▲ Monitor Mounts
page 39

Monitor Mount (584, 585, 586)

Item	Part Number	Description
1	77.0856.01	Flexarm covers (both sides), white
	77.0856.00	Flexarm covers (both sides), surf
2	77.0660.02	Joint retainer, white
	77.0660.01	Joint retainer, surf
3	005.138.00	Button head screw, 10-32 x 5/16 stainless steel
4	001.130.01	Button head socket screw, 1/4 -20 x 1/2"
5	006.022.00	Nut, 10-32
6	002.130.00	Recess adaptor screw, 10-32 x 3/8
7	77.0763.01	Monitor bracket cover, white
	77.0763.00	Monitor bracket cover, surf
8	77.0113.00	Vesa recess adaptor
9	77.0679.01	Handle, gray
	77.0679.00	Handle, surf
10	n/a	Monitor rotation assembly
11	77.0837.01	Flexarm assembly, white
	77.0837.00	Flexarm assembly, surf

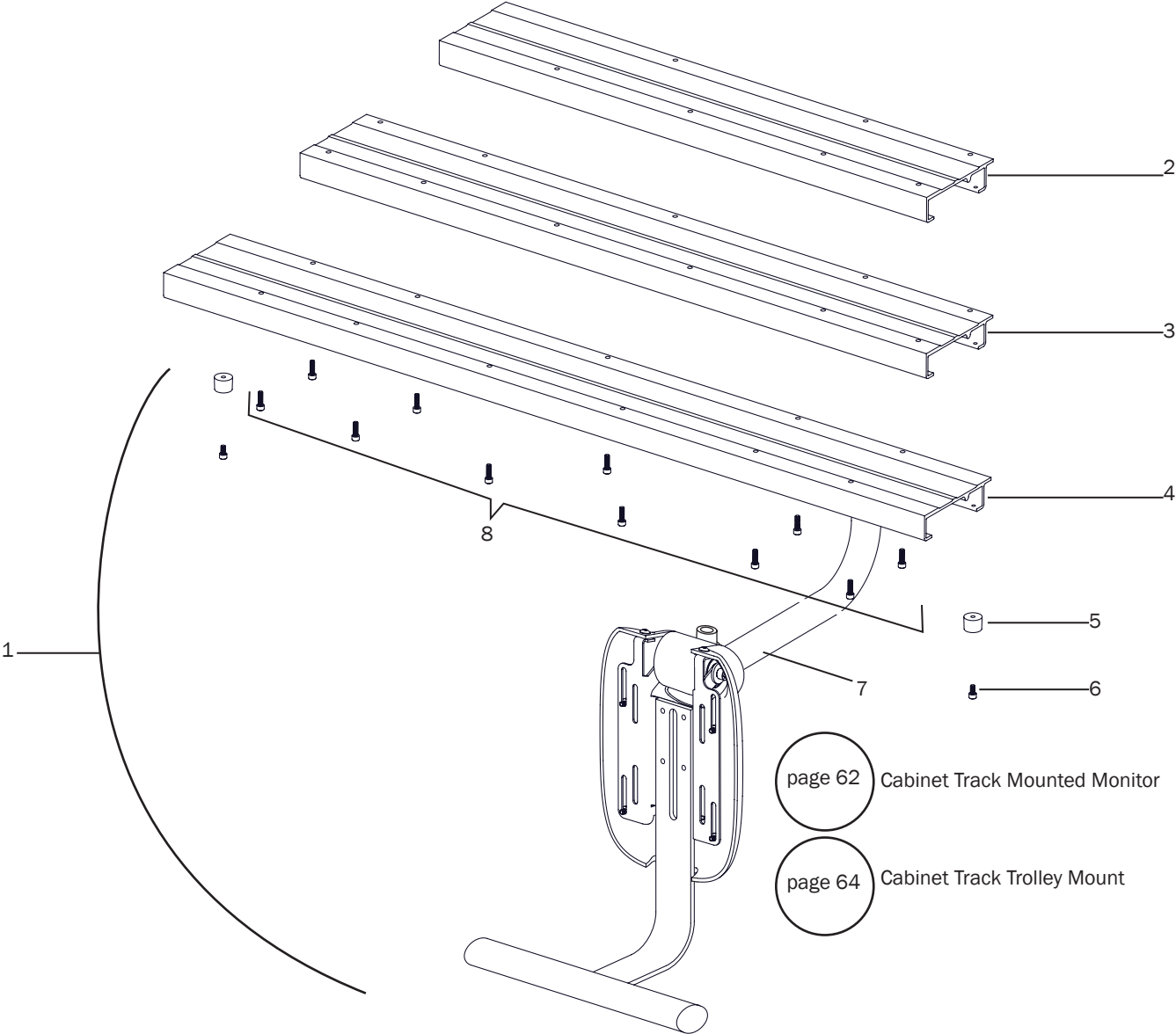
 Cabinet Mount
page 48

 Ceiling Mount
page 52

 Wall Mount
page 50

 Monitor Mounts
page 39

Cabinet Track Monitor Mount (587)



Cabinet Track Monitor Mount (587)

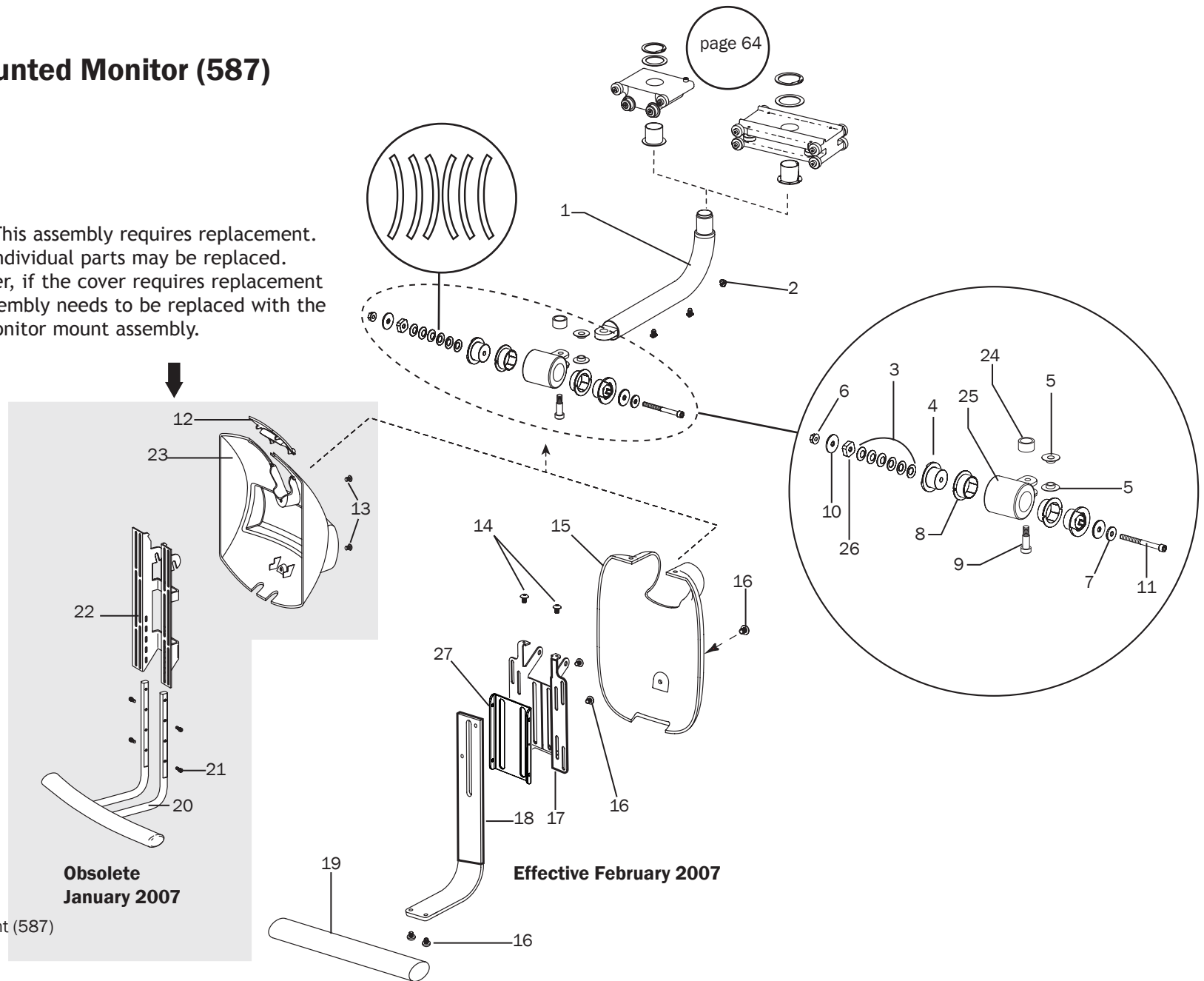
Item	Part Number	Description
1	77.0544.xx * 77.0545.xx * 77.0546.xx *	Monitor mount track assembly 40" (1016 mm) (includes items 5, 6, 7, and 8) Monitor mount track assembly, 32-1/2" (825.5 mm) (includes items 5, 6, 7, and 8) Monitor mount track assembly, 25" (635 mm) (includes items 5, 6, 7, and 8)
2	77.0438.02	Track, monitor mount, 25" (635 mm) (replaces 77.0546.00)
3	77.0438.01	Track, monitor mount, 32-1/2" (825.5 mm) (replaces 77.0545.00)
4	77.0438.00	Track, monitor mount, 40" (1016 mm) (replaces 77.0544.00)
5	042.644.00	Bumper
6	003.011.01	Screw, pan head 10 x 1-1/4", package of 5
7	n/a	Monitor support arm assembly
8	001.088.00	Screw, socket head, 10-32 x 5/8", stainless steel

* Contact Customer Service for replacement

Cabinet Track Mounted Monitor (587)



NOTE: This assembly requires replacement. Some individual parts may be replaced. However, if the cover requires replacement the assembly needs to be replaced with the new monitor mount assembly.



Cabinet Track Mounted Monitor (587)

Item	Part Number	Description	Item	Part Number	Description
1	56.1005.00	Monitor support arm assembly	16	005.143.00	Screw 1/4 20 x 3/8" (after February 2007)
2	025.081.00	Holder, flat tie	17	77.0653.00	Vesa bracket, no power supply (effective February 2007)
3	004.019.00	Spring washer	18	77.0629.01 77.0629.00	New handle arm, gray (effective February 2007) New handle arm, surf (effective February 2007)
4	77.1311.00	Friction adjustment bushing	19	77.0630.01 77.0630.00	Handle arm, straight, gray (effective February 2007) Handle arm, straight, surf (effective February 2007)
5	77.0459.00	Bushing, flanged	20	77.0498.00	Handle bracket kit (before February 2007)
6	006.089.00	Lock nut, 1/4-20 x 7/16" x 5/16"	21	002.130.00	Screw, socket head, 10-32 x 3/8"
7	004.141.00	Washer, flat .261 ID	22	77.0112.00 OBS	Mounting bracket (before February 2007)
8	016.179.00	Bushing	23	77.0026.00 OBS	Monitor mount cover (before February 2007)
9	001.145.01	Screw, socket shoulder, 5/16-18 x 3/8 x 3/4	24	77.1236.00	Bumper
10	004.156.00	Washer	25	77.1230.01 77.1230.02	Hub, white Hub, surf
11	002.119.00	Screw, socket head 1/4-20 x 2-3/4"	26	006.408.00	Square special nut
12	77.0213.00 OBS	Small cover, surf 4 (before February 2007)	27	77.1303.00	Vesa monitor mount handle bracket
13	002.094.02	Screw, button head socket, 10-32 x 1/4", stainless steel			
14	005.012.03	Screw, socket head 10-32 x 3/8", stainless steel			
15	77.0631.01 77.0631.00	Monitor mount cover, white (effective February 2007) Monitor mount cover, surf (effective February 2007)			

OBS Indicates that the individual part is obsolete. Replace with 77.0631.01/77.0631.00, item 15)



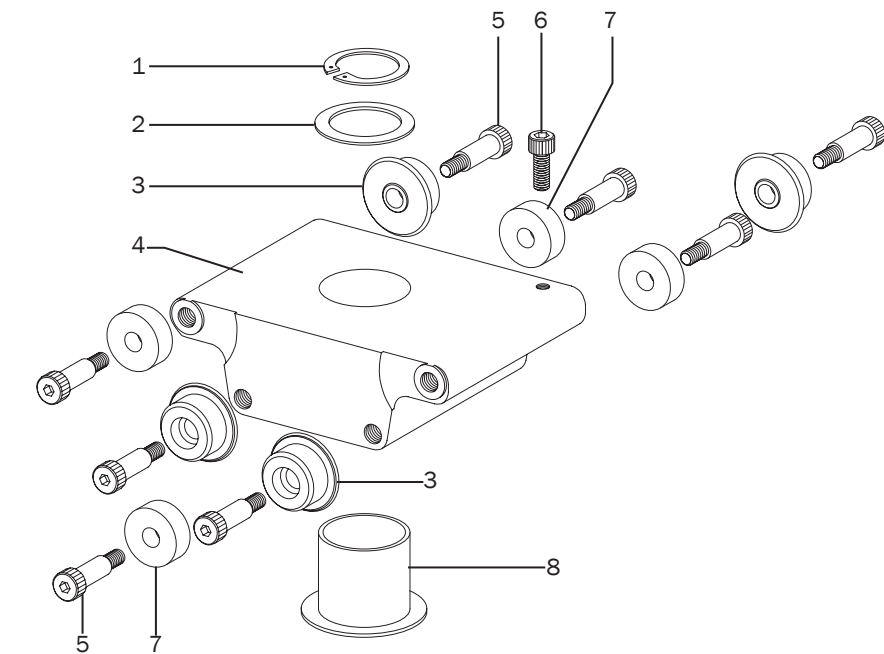
Cabinet Track Monitor Mount (587)
page 60



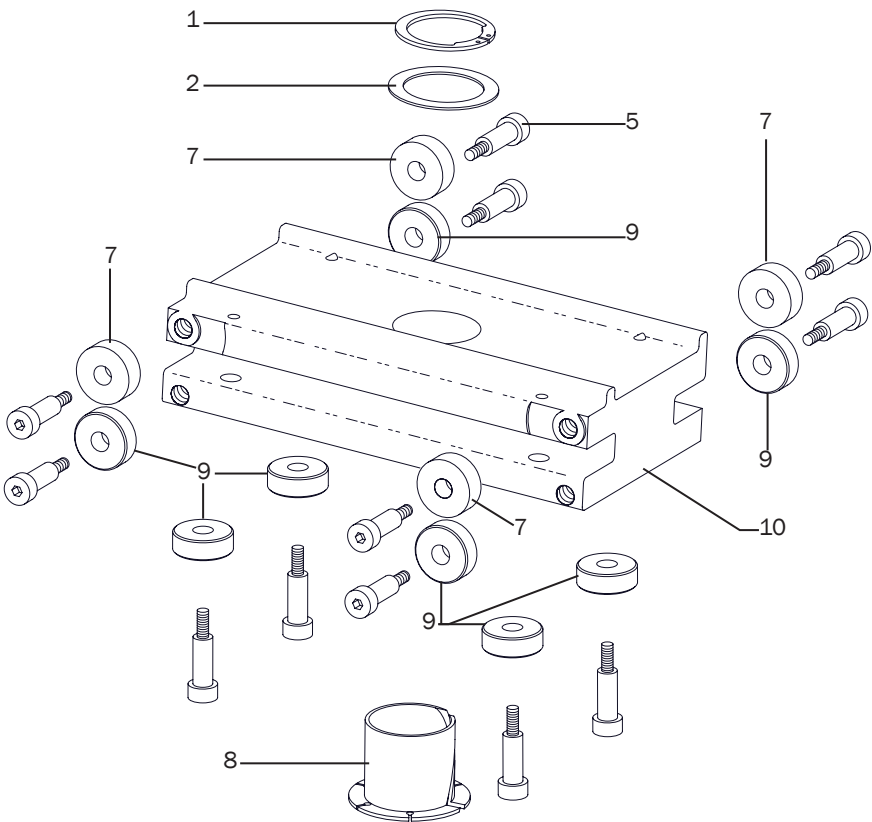
page 39

Cabinet Track Trolley Mount (587)

Before February 2007



Effective February 2007



NOTE: This assembly can retrofit to earlier product.

Cabinet Track Trolley Mount (587)

Item	Part Number	Description
1	010.012.00	Retaining ring, external
2	004.207.00	Washer, flat, 1.00 x 1.362 x .03, stainless steel
3	77.0457.00	Caster, monitor trolley
4	77.0437.00	Carrier, monitor trolley
5	001.138.00	Screw, socket shoulder, 10-24 x 1/4" x 5/8"
6	002.135.00	Screw, socket head 10-32 x 1/2", stainless steel
7	016.061.00	Ball bearing, .250 ID x .281 LG
8	77.0458.00	Bushing, flanged, 1.00 OD x 1.00 LG
9	56.1081.00	Caster, monitor trolley
10	56.1082.00 †	Carrier, trolley

† Indicates that the individual part is not available for sale



Cabinet Track Monitor Mount (587)
page 60



page 39



A-dec Headquarters

2601 Crestview Drive
Newberg, Oregon 97132
United States
Tel: 1.800.547.1883 within USA/CAN
Tel: +1.503.538.7478 outside USA/CAN
Fax: 1.503.538.0276
www.a-dec.com

A-dec Australia

Unit 8
5-9 Ricketty Street
Mascot, NSW 2020
Australia
Tel: 1.800.225.010 within AUS
Tel: +61.(0).2.8332.4000 outside AUS

A-dec China

A-dec (Hangzhou) Dental Equipment Co., Ltd.
528 Shunfeng Road
Qianjiang Economic Development Zone
Hangzhou 311106
Zhejiang, China
Tel: +1.503.538.7478

A-dec United Kingdom

EU Authorized Representative
Austin House, 11 Liberty Way
Nuneaton, Warwickshire CV11 6RZ
England
Tel: 0800.ADEC.UK (2332.85) within UK
Tel: +44.(0).24.7635.0901 outside UK



86.0328.00 Rev D
Copyright 2014 A-dec Inc.
All rights reserved.