

A. OPENNING THE PACKAGING AND PLACING THE EQUIPMENT IN SITE

1. Lift the sterilizer by a fork-lift truck using the lift points and land carefully.

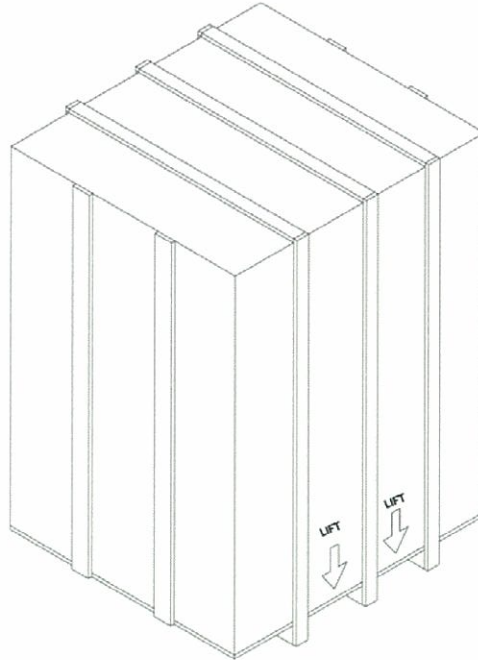


FIG. 1

2. Open the outer plastic cover on the package.
3. Carefully open the main package made of wood.
4. Open the inner plastic cover on the equipment .
5. Take the upper panel out.
6. Lift the equipment around 15 cm by help of lifting arms on the sterilizer.
7. Take the wooden base out.
8. Adjust the heights of the floor flanges at the corners so that the sterilizer would be movable on its casters. (FIG. 2)

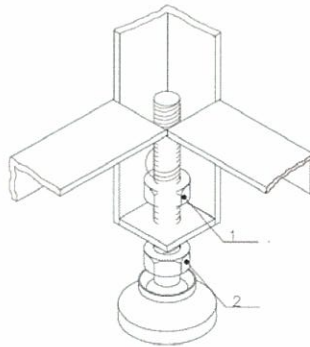


FIG. 2

9. Move the sterilizer to the installation room.

B. MAKING THE ROOM READY AND POSITIONING THE STERILIZER

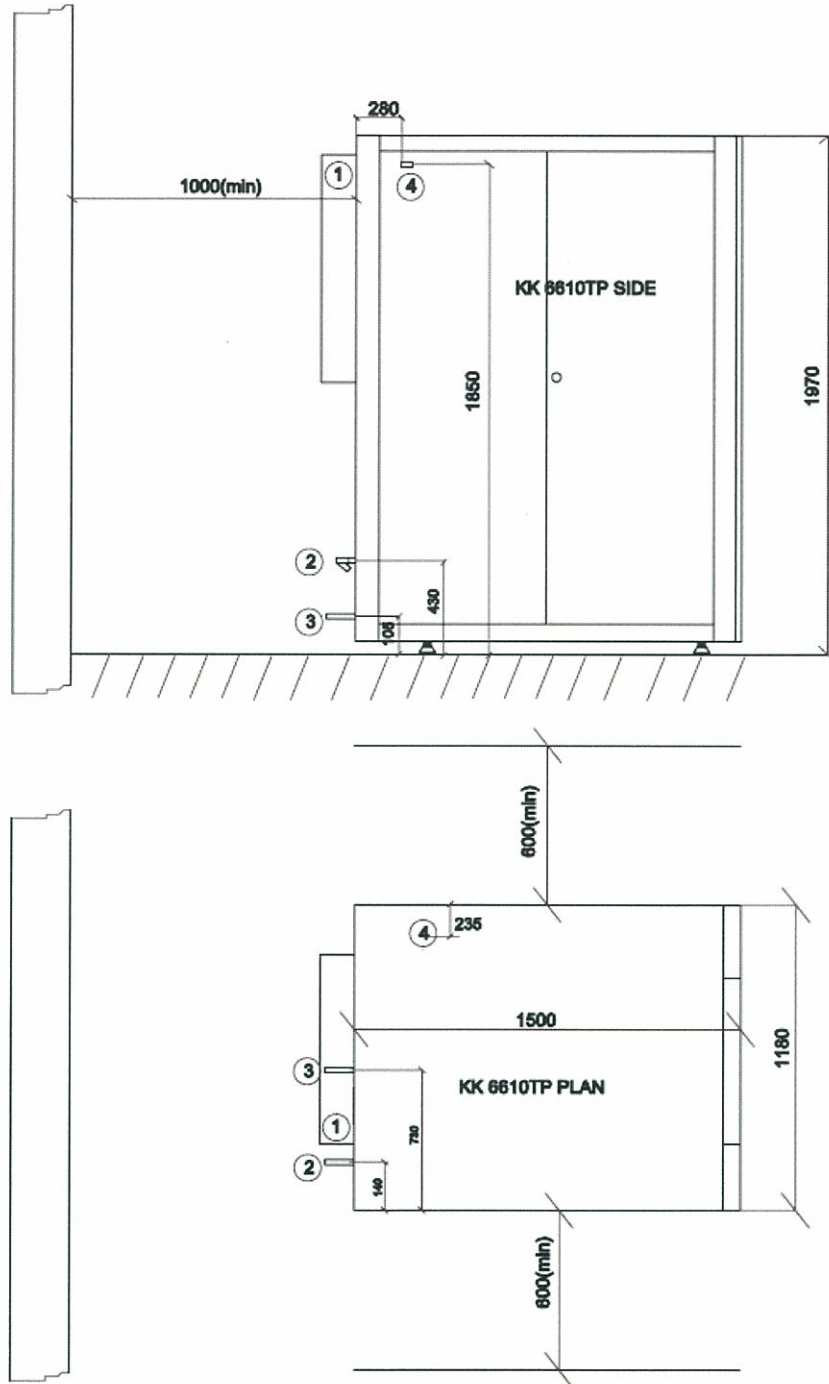


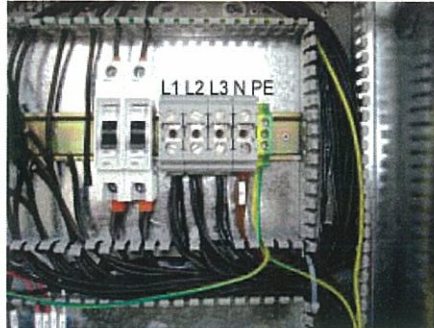
FIG. 3

During positioning of the sterilizer FIG.3 should be considered.

The sterilizer will be levelled by help of floor flanges at the corners, after positioning.

1. ELECTRIC SUPPLY ;

- 400 V, 3 phase, 50 Hz.
- 45 Kw power.



The Electrical connection will be made as shown in the figure.

2. WATER SUPPLY;

- 3,5 – 5 kg / cm² pressure, ½" NPT
- 15 - 18 °C
- 2,5 – 5 gr. hardness



Water connection will be made as shown in the figure.

3. WASTE ;

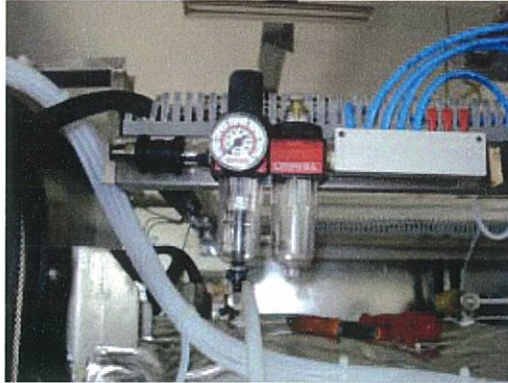
- 1-1/2" NPT
- No resistance to flow (free fall).



Waste connection will be made as shown in the figure.

4. PRESSURIZED AIR

- 5-6 kg/ cm² pressure, ½" NPT.
- 300 lt./hr. capacity.



Air connection will be made to the conditioner shown in the figure.

C. WARNINGS

- ! After positioning the equipment , the lifting arnes on the sterilizer will be with drawn.
- ! The nuts and screws will be tightened, electrical connections will be checked,
- ! At the end of installation ;
 - The protective plastic covers will be withdrawn carefully.
 - The installation area will be cleaned, the packaging woods and plastics will be thrown to trash.